



SMI-245 SERIES

2" X 4-1/2" NON-IMPACT STOREFRONT FRAMING SYSTEM

Elevate your storefront and low-rise applications with the SMI-245 Framing System, a high-performance, flush-glazed solution designed for strength, versatility, and ease of installation. Available in both standard non-thermal (241) and single break thermal (241T) options, this system accommodates 1/2" and 1" glass units, ensuring adaptability for a variety of projects. Its screw spline assembly allows for pre-fabrication and pre-assembly, reducing on-site labor costs while maintaining precision. With a maximum panel size of 48" x 120", no exposed fasteners, and an impressive 12psf water infiltration resistance, the SMI-245 delivers both aesthetics and durability. Pair it with our narrow, medium, or wide stile McKinley doors for a complete, high-quality storefront solution that stands out in both design and performance.



SMI-245
SERIES

FEATURES

- 2" sight-line
- 4-1/2" depth
- Dry glaze gasket system using EPDM gaskets
- Screw spline assembly
- No exposed fasteners
- Inside / Outside glazed

Air Infiltration: 0.06 CFM/Ft.2@6.24 PSF

Water Infiltration: 12PSF

Uniform Load: +/- 50



ALDORAGLASS.COM

CORAL SPRINGS, FL
954.784.6900

CHARLESTON, SC
800.868.4527

ORLANDO, FL
407.960.3933

MIAMI, FL
305.691.7943

LOUISVILLE, KY
502.584.6145

AUSTELL, GA
470.377.8760

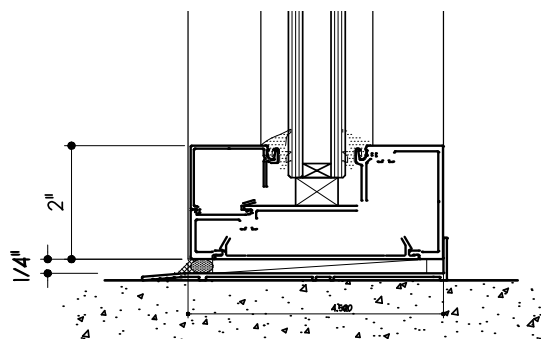
NEWPORT NEWS, VA
757.512.7727

SERIES SMI-245

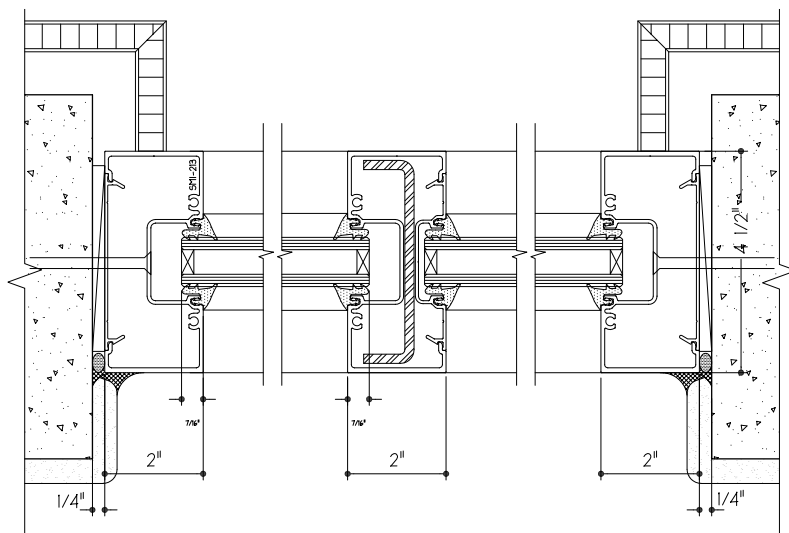
FIXED NON-IMPACT SYSTEM

DETAILS

- 1" Insulated or 1/2" Tempered Glazing
- Perfect For Wine
- Can Be Unitized



SILL WITH OPTIONAL RECOMMENDED SILL PAN



JAMBS WITH INTERMEDIATE REINFORCED MULLION



ADDITIONAL PERFORMANCE FEATURES:

GLASS LOADS	1" Tempered		1/2" Tempered (No approval)	
MAX PANEL SIZE	Non-Reinforced		Reinforced	
	48" x 120"		36" x 144"	
TESTING PROTOCOL	Florida Building Code Approved			
	TAS 201 Passed	TAS 202 Passed	TAS 203 Passed	ANSI Z97 Passed
ENERGY	Achieves energy code requirements with performance glass			

ALDORAGLASS.COM