



SMI-45 SERIES

1-3/4" X 4-1/2" NON-IMPACT STOREFRONT FRAMING SYSTEM

The SMI-45 offers strength, versatility, and aesthetics in one solution. A premier flush-glazed storefront system engineered for both interior and exterior low-rise applications it is designed for efficiency and performance. This system accommodates 1/4" or 3/8" glass, utilizes screw spline joinery, and features no exposed fasteners for a clean, modern aesthetic. With a max panel size of 48" x 120" and 12 psf water infiltration resistance, the SMI-45 offers durability without compromising design flexibility. Pair it with our McKinley narrow, medium, or wide stile doors for a seamless, high-quality 1-3/4" storefront framing solution that delivers unmatched strength, precision, and long-term reliability.



SMI-45
SERIES

FEATURES

- 1-3/4" sight-line
- 4-1/2" depth
- Dry glazed gasket system using EPDM gaskets
- Screw spline assembly
- No exposed fasteners
- Inside / Outside Glazed

Air Infiltration: 0.06 CFM/Ft.2@6.24 PSF

Water Infiltration: 12PSF

Uniform Load: +/- 80



ALDORAGLASS.COM

CORAL SPRINGS, FL
954.784.6900

CHARLESTON, SC
800.868.4527

ORLANDO, FL
407.960.3933

MIAMI, FL
305.691.7943

LOUISVILLE, KY
502.584.6145

AUSTELL, GA
470.377.8760

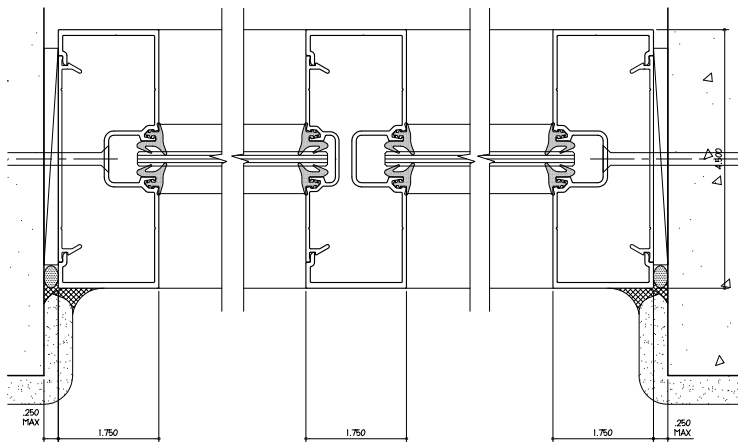
NEWPORT NEWS, VA
757.512.7727

SERIES SMI-45

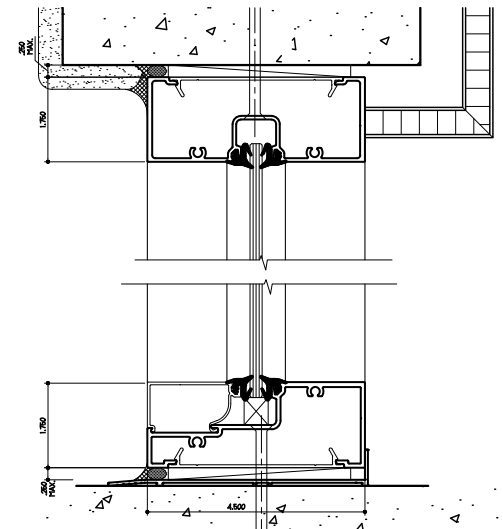
FIXED NON-IMPACT SYSTEM

DETAILS

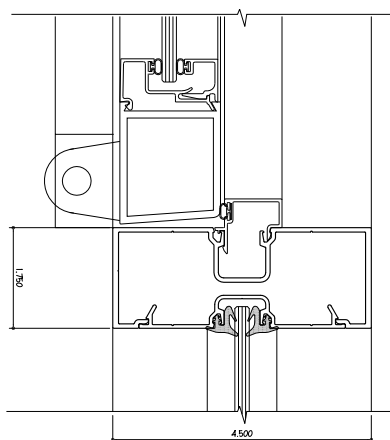
- 1/4" or 3/8" Glazing
- Screw Spline Assembly
- Can Be Pre-fabricated



JAMBS WITH INTERMEDIATE MULLION



HEAD AND SILL WITH OPTIONAL, BUT
RECOMMENDED SILL FLASHING



SMI-45 SYSTEM MULLIED TO MCKINLEY DOOR

ADDITIONAL PERFORMANCE FEATURES

GLASS LOADS	1/4" Tempered	3/8" Tempered (no approval)
MAX PANEL SIZE	Non-Reinforced 30" x 144"	Reinforced 36" x 144"
TESTING PROTOCOL	Florida Building Code Approved	
	TAS 201 Passed	TAS 202 Passed
		TAS 203 Passed

ALDORAGLASS.COM

CORAL SPRINGS, FL
954.784.6900

CHARLESTON, SC
800.868.4527

ORLANDO, FL
407.960.3933

MIAMI, FL
305.691.7943

LOUISVILLE, KY
502.584.6145

AUSTELL, GA
470.377.8760

NEWPORT NEWS, VA
757.512.7727