



# FS-300 Series

FRONT SET STOREFRONT SYSTEM

The FS-300 is the culmination of design efforts involving glaziers, engineering firms, architects, and Aldora's product development team, plant personnel and sales force. In fact, its seamless mullion design is "Patent Pending". The resulting product is the best front set, impact store front system on the market with higher design pressures, larger panel sizes and easier assembly than any competing product.



## Features

- 1.50" x 4.50" profile plus 3/4" front set
- Laminated (9/16") or laminated-insulated (1 5/16")
- Maximum single panel size of 75 1/2" x 180"
- Design pressures of
  - +/- 90 psf non-reinforced
  - +120/-135 psf reinforced
- 18 psi water resistance
- Achieves 2010 energy code requirements
- Screw spline or shear block assembly
- Free standing jambs



## Options

- Can be pre-glazed
- Thermal break



FS-300  
SERIES



[ALDORAGLASS.COM](http://ALDORAGLASS.COM)

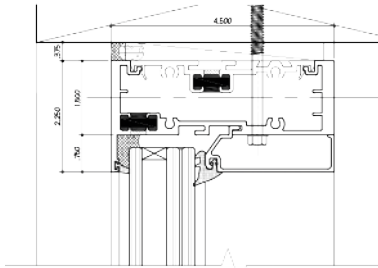
CORAL SPRINGS, FL 954.784.6900 | ORLANDO, FL 407.960.3933 | CHARLESTON, SC 800.868.4527  
MIAMI, FL 305.691.7943 | LOUISVILLE, KY 502.549.1893 | AUSTELL, GA 470.377.8760 | NEWPORT NEWS, VA 757.512.7727

# FS-300 Series

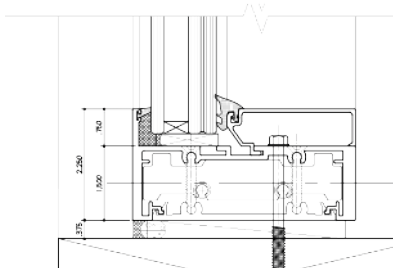
## FRONT SET STOREFRONT SYSTEM

### Details:

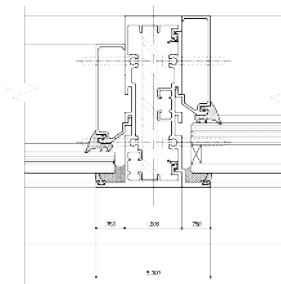
- Front Set Glass Location
- 9/16" or 1 5/16" Glazing
- Optional Thermal Break
- Can Be Pre-glazed



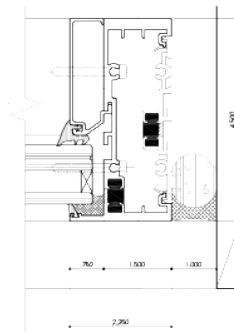
HEAD DETAIL OF THERMALLY BROKEN FS300 AND LAMINATED INSULATED GLASS.



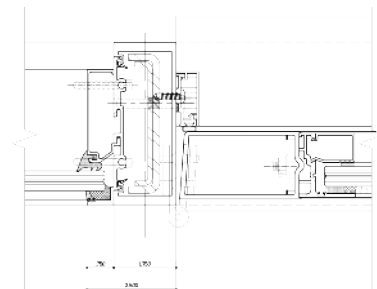
SILL DETAIL OF NON-THERMALLY BROKEN FS300 AND LAMINATED INSULATED GLASS.



INTERMEDIATE VERTICAL, NONTHERMALLY BROKEN, REINFORCED WITH LAMINATED AND LAMINATED INSULATED GLASS.



FREE STANDING JAMB, THERMALLY BROKEN WITH 1" SHIM SPACING.



DOOR MULLION DETAIL WITH NON-THERMALLY BROKEN FS300.



### Performance:

GLASS LOADS	PVB 9/16” Heat Strengthened		Uvekoi 9/16” Heat Strengthened		SGP 9/16” Heat Strengthened	
	+65/-75 psf		+120/-135 psf		+120/-135 psf	
WATER	18 lbs.					
MAX PANEL SIZE	Non-Reinforced			Reinforced		
	60" x 120"			60" x 144" (PVB 48" x 120")		
TESTING PROTOCOL	Miami Dade NOA and Florida Building Code Approved					
	TAS 201 Passed		TAS 202 Passed		TAS 203 Passed	
ENERGY	ANSI Z97 Passed					
	Achieves energy code requirements with performance glass					



ALDORAGLASS.COM

CORAL SPRINGS, FL 954.784.6900 | ORLANDO, FL 407.960.3933 | CHARLESTON, SC 800.868.4527  
 MIAMI, FL 305.691.7943 | LOUISVILLE, KY 502.549.1893 | AUSTELL, GA 470.377.8760 | NEWPORT NEWS, VA 757.512.7727