

# FS-300 Series

## FRONT SET STOREFRONT SYSTEM

The FS-300 is the culmination of design efforts involving glaziers, engineering firms, architects, and Aldora's product development team, plant personnel and sales force. In fact, its seamless mullion design is "Patent Pending". The resulting product is the best front set, impact store front system on the market with higher design pressures, larger panel sizes and easier assembly than any competing product.

FS-300  
SERIES



### FEATURES:

- 1.50" x 4.50" profile plus 3/4" front set
- Laminated (9/16") or laminated-insulated (1 5/16")
- Maximum single panel size of 5' x 12'
- Design pressures of
  - +/- 90 psf non-reinforced
  - +120/-135 psf reinforced
- 18 psi water resistance
- Achieves 2010 energy code requirements
- Screw spline or shear block assembly
- Free standing jambs



### OPTIONS:

- Can be pre-glazed
- Thermal break



## ALDORA ALUMINUM & GLASS PRODUCTS

[aldoraglass.com](http://aldoraglass.com)

4250 Coral Ridge Drive Suite 101  
Coral Springs, FL 33065  
Ph: 954.784.6900 Fax 954.784.6901

7421 East Spartan Boulevard  
Charleston, SC 29418  
Ph: 843.552.6377 Fax: 800.314.4436

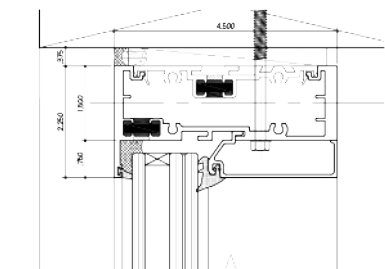


# SERIES FS-300

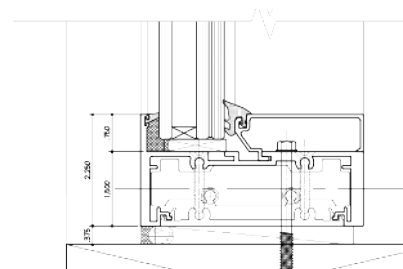
## FRONT SET STOREFRONT SYSTEM

### Details:

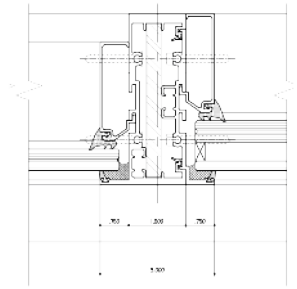
- Front Set Glass Location
- Optional Thermal Break
- 9/16" or 1 5/16" Glazing
- Can Be Pre-glazed



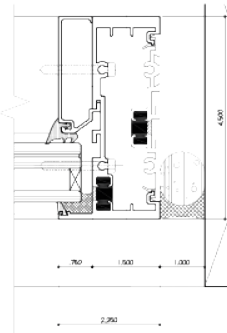
HEAD DETAIL OF THERMALLY BROKEN FS300 AND LAMINATED INSULATED GLASS.



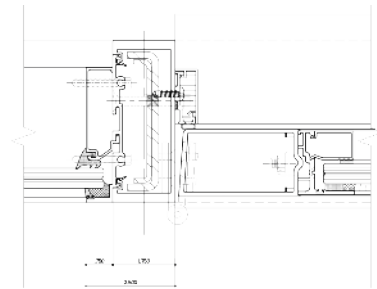
SILL DETAIL OF NON-THERMALLY BROKEN FS300 AND LAMINATED INSULATED GLASS.



INTERMEDIATE VERTICAL, NON-THERMALLY BROKEN, REINFORCED WITH LAMINATED AND LAMINATED INSULATED GLASS.



FREE STANDING JAMB, THERMALLY BROKEN WITH 1" SHIM SPACING.



DOOR MULLION DETAIL WITH NON-THERMALLY BROKEN FS300.

### Performance:

GLASS LOADS	PVB 9/16" Heat Strengthened	Uvekol 9/16" Heat Strengthened	SGP 9/16" Heat Strengthened
	+65/-75 psf	+120/-135 psf	+120/-135 psf
WATER	18 lbs.		
MAX PANEL SIZE	Non-Reinforced	Reinforced	
	60" x 120"	60" x 144" (PVB 48" x 120")	
TESTING PROTOCOL	Miami Dade NOA and Florida Building Code Approved		
	TAS 201 Passed	TAS 202 Passed	TAS 203 Passed
ENERGY	Achieves energy code requirements with performance glass		



### ALDORA ALUMINUM & GLASS PRODUCTS

[aldoraglass.com](http://aldoraglass.com)

4250 Coral Ridge Drive Suite 101  
Coral Springs, FL 33065  
Ph: 954.784.6900 Fax 954.784.6901

7421 East Spartan Boulevard  
Charleston, SC 29418  
Ph: 843.552.6377 Fax: 800.314.4436