



# K-2 BREEZE

## IMPACT CABANA DOOR

The K2-Breeze is the only impact resistant, high design pressure, water rated Cabana door with an operable single hung in the top panel. It is ideal for jalousie door replacement as it provides ventilation and hurricane resistance. The door comes standard with corrosion resistant, stainless steel assembly screws and operable hardware. The residential latch lever allows passive lever access plus a three point lock activated by thumbturn.

## FEATURES

- Aluminum alloy 6063-T6
- Door components – stiles 3 1/2", bottom rail 6 1/2", top rail 5"
- Stainless steel assembly screws
- Residential latch lever with passive lever and 3 point locking mechanism
- High design pressures
- Water rated to 13.5 lbs

## OPTIONS AND ADD ONS

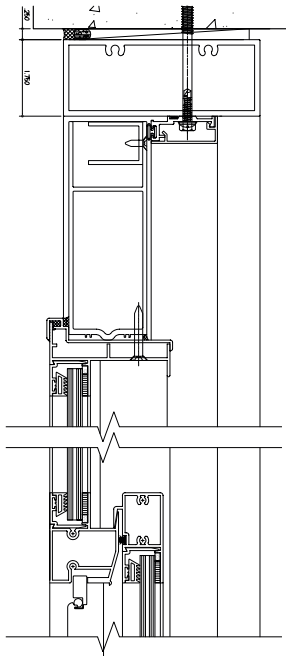
Bottom panel options

- 9/16" laminated glass
- 9/16" laminated glass with white or opaque privacy interlayer
- Aluminum panel

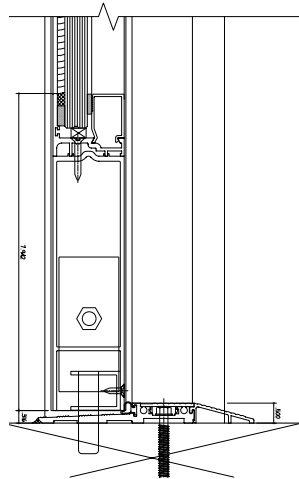


## DETAILS

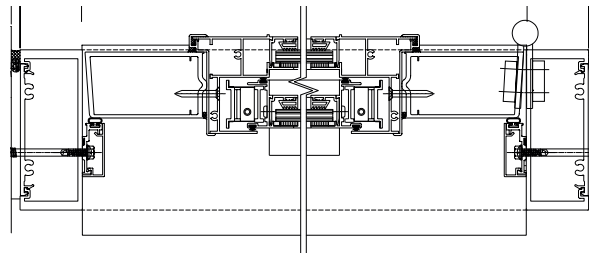
- Operable Single Hung
- Residential Latch Lever
- Optional Glass or Aluminium Panel
- Non-corrosive Fasteners Throughout



HEAD ATTACHMENT WITH SINGLE HUNG MOUNTING DETAIL



ADA, THRESHOLD  
OPTION BUMPER



SINGLE HUNG MOUNTED  
TO DOOR STILES

## PERFORMANCE

<b>GLASS LOADS</b>	Uvekol 9/16" Heat Strengthened	Saflex 9/16" Heat Strengthened	9/16" laminated glass + .040 alum. cladding (bottom panel)	
	+90/-120 psf	+90/-120 psf	+90/-120 psf	
<b>WATER</b>	13.5 lbs.			
<b>MAX PANEL</b>	Non-Reinforced 43 1/8" x 109 3/4"		Reinforced Not Required	
<b>TESTING PROTOCOL</b>	Florida Building Code Approved			
	TAS 201 Passed	TAS 202 Passed	TAS 203 Passed	ANSI Z97 Passed

[ALDRAGLASS.COM](http://ALDRAGLASS.COM)

CORAL SPRINGS, FL 954.784.6900 | ORLANDO, FL 407.960.3933 | CHARLESTON, SC 800.868.4527  
 MIAMI, FL 305.691.7943 | LOUISVILLE, KY 502.549.1893 | AUSTELL, GA 470.377.8760 | NEWPORT NEWS, VA 757.512.7727