

K2 Summit Impact Inswing Door

MEDIUM STILE IMPACT DOOR

The inswing version of the K2 Summit impact door offers true inswing capability to impact entrance doors. This allows for exit into a structure from common areas, meeting both egress and impact requirements. Despite the inswing configuration, the Summit still achieves high design pressures and has many of the same options that the K2 Summit Outswing door has.



FEATURES:

- High design pressures
- 9/16" laminated or 1 5/16" laminated-insulated glass
- ADA bumper threshold



OPTIONS:

- Overhead concealed closer
- Continuous gear hinges
- 3/4" jambs
- 10" bottom rail for ADA



ALDORA ALUMINUM & GLASS PRODUCTS

aldoraglass.com

4250 Coral Ridge Drive Suite 101
Coral Springs, FL 33065
Ph: 954.784.6900 Fax: 954.784.6901

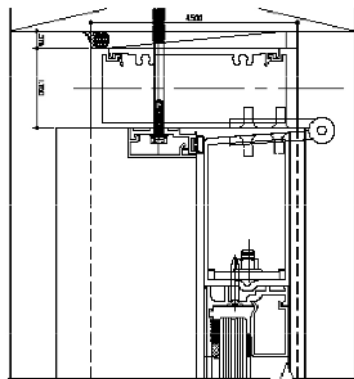
7421 East Spartan Boulevard
Charleston, SC 29418
Ph: 800-868-4527 Fax: 800-314-4436

K2 SUMMIT IMPACT

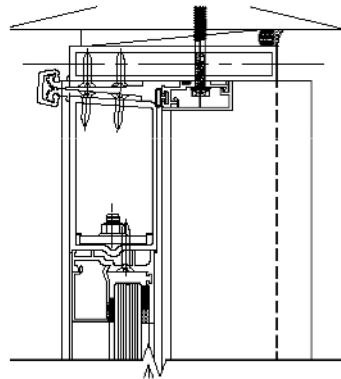
INSWING DOOR

Details:

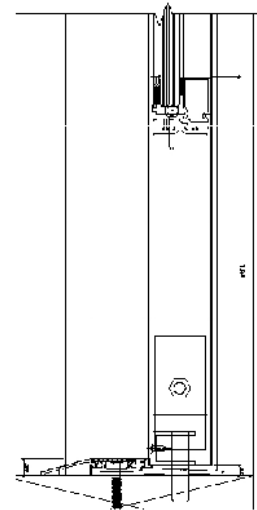
- High Design Pressures
- 3/4" Jamb Available
- Optional 10" Bottom Rail
- Continuous Gear Hinges Optional



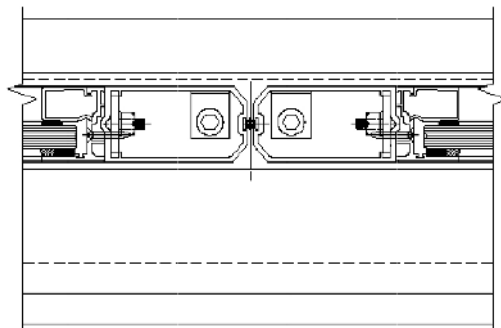
STANDARD JAMB
INSTALLATION



SUMMIT INSWING WITH 3/4" JAMB AND
CONTINUOUS GEAR HINGE



10" BOTTOM RAIL AND
ADA BUMPER THRESHOLD



MEETING STILES FOR SUMMIT

Performance:

GLASS LOADS	9/16" HS Uvekol or 15/16" w/ HS Uvekol	9/16" Uvekol Annealed	9/16" .090 Saflex Annealed	1 5/16" .090 Saflex HS
	+80/-100 psf	+80/-100 psf	+80/-90 psf	+80/-90 psf
WATER	Not Water Rated			
MAX PANEL SIZE	Non-Reinforced		Reinforced	
	72 1/2" x 90 1/4" (+24" transom)		72 1/2" x 90 1/4" (+35 3/4" transom)	
TESTING PROTOCOL	Miami Dade and Florida Building Code Approved			
	TAS 201 Passed	TAS 202 Passed	TAS 203 Passed	ANSI Z97 Passed
ENERGY	Achieves energy code requirements with performance glass			



ALDORA ALUMINUM & GLASS PRODUCTS

4250 Coral Ridge Drive Suite 101
Coral Springs, FL 33065
Ph: 954.784.6900 Fax: 954.784.6901

7421 East Spartan Boulevard
Charleston, SC 29418
Ph: 800-868-4527 Fax: 800-314-4436

aldoraglass.com