

# SMI-090 SERIES

## 2-3/4" X 4-1/2" NON-IMPACT WINDOW WALL

The SMI-090 is the non-impact variation of Aldora's SMI-090 Impact storefront system—engineered as a non-weep, wet-seal window wall designed to resemble true windows rather than traditional curtain walls.

This versatile system features an adjustable glazing pocket that accommodates either 1/4" tempered or 1" insulated glass, offering flexibility for a range of project requirements. For enhanced thermal performance, the system can be upgraded with a thermal break when used with insulated glass. Built with a screw spline assembly and strategic installation hole placement behind the glazing pocket, the SMI-090 is one of the few non-impact systems on the market that can be fully pre-glazed—making it a superior solution for faster, more efficient installation without sacrificing strength or aesthetics.



SMI-090  
SERIES

### FEATURES

- 2-3/4" sight-line
- 4-1/2" depth
- Can be pre-glazed
- Screw spline assembly
- Radius options

**Air Infiltration:** 0.06 CFM/Ft.2@6.24 PSF

**Water Infiltration:** +/-18 PSF

**Uniform Load:** +/- 120



[ALDORAGLASS.COM](http://ALDORAGLASS.COM)

CORAL SPRINGS, FL  
954.784.6900

CHARLESTON, SC  
800.868.4527

ORLANDO, FL  
407.960.3933

MIAMI, FL  
305.691.7943

LOUISVILLE, KY  
502.584.6145

AUSTELL, GA  
470.377.8760

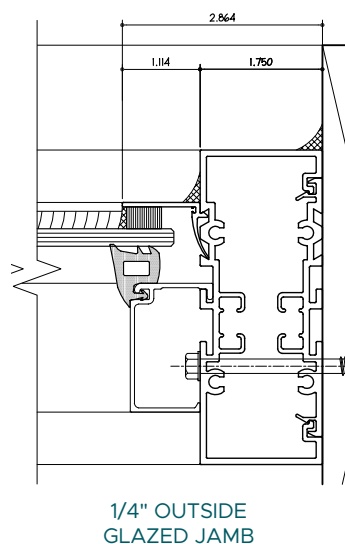
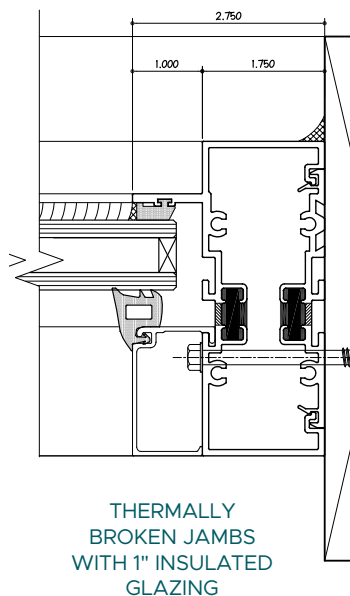
NEWPORT NEWS, VA  
757.512.7727

# SERIES SMI-090

## FIXED NON-IMPACT WINDOW WALL SYSTEM

### DETAILS:

- Screw spline assembly
- Optional thermal break
- Variable glass stop locations
- 1/4" or 1" glazing



### ADDITIONAL PERFORMANCE FEATURES:

GLASS LOADS	1/4" Tempered		1" Insulated	
MAX PANEL SIZE	Non-Reinforced		Reinforced	
	30" x 120"		36" x 144"	
TESTING PROTOCOL	Florida Building Code Approved			
	TAS 201 Passed		TAS 202 Passed	
		TAS 203 Passed		
ENERGY	Achieves energy code requirements with performance glass			



[ALDORAGLASS.COM](http://ALDORAGLASS.COM)

CORAL SPRINGS, FL  
954.784.6900

CHARLESTON, SC  
800.868.4527

ORLANDO, FL  
407.960.3933

MIAMI, FL  
305.691.7943

LOUISVILLE, KY  
502.584.6145

AUSTELL, GA  
470.377.8760

NEWPORT NEWS, VA  
757.512.7727