

**SERIES SMI-090 ALUMINUM WINDOW WALL**

THIS SYSTEM MAY BE USED IN CONJUNCTION WITH F.B.C. APPROVED LARGE MISSILE IMPACT RESISTANT DOORS. LOWER DESIGN PRESSURE FROM STOREFRONT OR DOOR APPROVAL WILL APPLY TO ENTIRE SYSTEM.

THIS PRODUCT HAS BEEN DESIGNED AND TESTED TO COMPLY WITH THE REQUIREMENTS OF THE 2023 (8TH EDITION) FLORIDA BUILDING CODE INCLUDING HIGH VELOCITY HURRICANE ZONE (HVHZ).

1BY OR 2BY WOOD BUCKS & BUCK FASTENERS BY OTHERS, MUST BE DESIGNED AND INSTALLED ADEQUATELY TO TRANSFER APPLIED PRODUCT LOADS TO THE BUILDING STRUCTURE.

ANCHORS SHALL BE CORROSION RESISTANT, SPACED AS SHOWN ON DETAILS AND INSTALLED PER MANUF'S INSTRUCTIONS. SPECIFIED EMBEDMENT TO BASE MATERIAL SHALL BE BEYOND WALL DRESSING OR STUCCO.

A LOAD DURATION INCREASE IS USED IN DESIGN OF ANCHORS INTO WOOD ONLY. ALL SHIMS TO BE HIGH IMPACT, NON-METALLIC AND NON-COMPRESSIBLE.

MATERIALS INCLUDING BUT NOT LIMITED TO STEEL/METAL SCREWS, THAT COME INTO CONTACT WITH OTHER DISSIMILAR MATERIALS SHALL MEET THE REQUIREMENTS OF THE 2020/2023 FLORIDA BLDG. CODE & ADOPTED STANDARDS.

THIS PRODUCT APPROVAL IS GENERIC AND DOES NOT PROVIDE INFORMATION FOR A SITE SPECIFIC PROJECT, i.e. LIFE SAFETY OF THIS PRODUCT, ADEQUACY OF STRUCTURE RECEIVING THIS PRODUCT AND SEALING AROUND OPENING FOR WATER INFILTRATION RESISTANCE ETC. CONDITIONS NOT SHOWN IN THIS DRAWING ARE TO BE ANALYZED SEPARATELY, AND TO BE REVIEWED BY BUILDING OFFICIAL.

DESIGN LOADS SHOWN ARE BASED ON 'ALLOWABLE STRESS DESIGN (ASD)'.

MANUFACTURER'S LABEL SHALL BE LOCATED ON A READILY VISIBLE LOCATION IN ACCORDANCE WITH SECTION 1709.9.3 OF FLORIDA BUILDING CODE. LABELING TO COMPLY WITH SECTION 1709.9.2.

**TYPICAL ELEVATIONS**

**INSTRUCTIONS:**

USE CHARTS AS FOLLOWS.

- STEP 1** DETERMINE DESIGN WIND LOAD REQUIREMENT BASED ON WIND VELOCITY, BLDG. HEIGHT, WIND ZONE USING APPLICABLE ASCE 7 STANDARD.
- STEP 2** SEE CHARTS ON SHEET 2 THRU 5 FOR DESIGN LOAD CAPACITY OF DESIRED GLASS SIZE.
- STEP 3** CHECK MULLION CAPACITY FOR A GIVEN SPACING AND HEIGHT USING CHARTS ON SHEET 6 & 7 FOR STOREFRONT MULLION AND SHEET 9 & 10 FOR DOOR MULLION. THE CAPACITY SHOULD EXCEED THE DESIGN LOAD.
- STEP 4** USING CHART ON SHEETS 8 SELECT ANCHOR OPTION WITH DESIGN RATING MORE THAN DESIGN LOAD SPECIFIED IN STEP 1 ABOVE.
- STEP 5** THE LOWEST VALUE RESULTING FROM STEPS 2, 3 AND 4 SHALL APPLY TO ENTIRE SYSTEM.

**SINGLE 'O' PANEL:**  
 FRAME WIDTH = D.L.O. WIDTH + 5.500"  
 FRAME HEIGHT = D.L.O. HEIGHT + 5.500"  
 FOR ANCHORED JAMBS MAX. SIZES USE GLASS CHART ON SHEET 2.  
 FOR UNANCHORED JAMB FRAME USE CHARTS ON SHEETS 6 & 7.

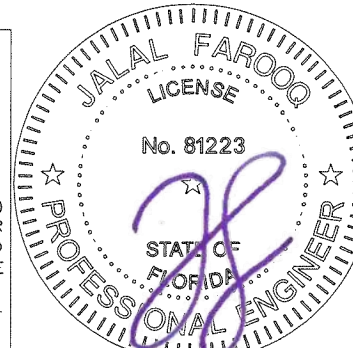
PRODUCT COMPLIES WITH REQUIREMENTS OF ANSI Z97.1. WITH 9/16" LAMINATED GLASS WITH .10" UVEKOL S INTERLAYER AND MAX. D.L.O. DIMENSIONS OF 30-1/4" X 70-1/2"

THIS SYSTEM IS RATED FOR LARGE & SMALL MISSILE IMPACT. SHUTTERS ARE NOT REQUIRED.

Sealed: 8/21/2025

FL #19973

- A- CONTRACTOR TO BE RESPONSIBLE FOR THE SELECTION, PURCHASE AND INSTALLATION OF THIS PRODUCT BASED ON THIS PRODUCT EVALUATION PROVIDED HE/SHE DOES NOT DEVIATE FROM THE CONDITIONS DETAILED ON THIS DOCUMENT.
- B- THIS PRODUCT EVALUATION DOCUMENT WILL BE CONSIDERED INVALID IF ALTERED BY ANY MEANS.
- C- SITE SPECIFIC PROJECTS SHALL BE PREPARED BY A FLORIDA REGISTERED ENGINEER OR ARCHITECT WHICH WILL BECOME THE ENGINEER OF RECORD (E.O.R.) FOR THE PROJECT AND WHO WILL BE RESPONSIBLE FOR THE PROPER USE OF THE P.E.D. ENGINEER OF RECORD, ACTING AS A DELEGATED ENGINEER TO THE P.E.D. ENGINEER SHALL SUBMIT TO THIS LATTER THE SITE SPECIFIC DRAWINGS FOR REVIEW.
- D- THIS P.E.D. SHALL BEAR THE DATE AND ORIGINAL SEAL AND SIGNATURE OF THE PROFESSIONAL ENGINEER OF RECORD THAT PREPARED IT.



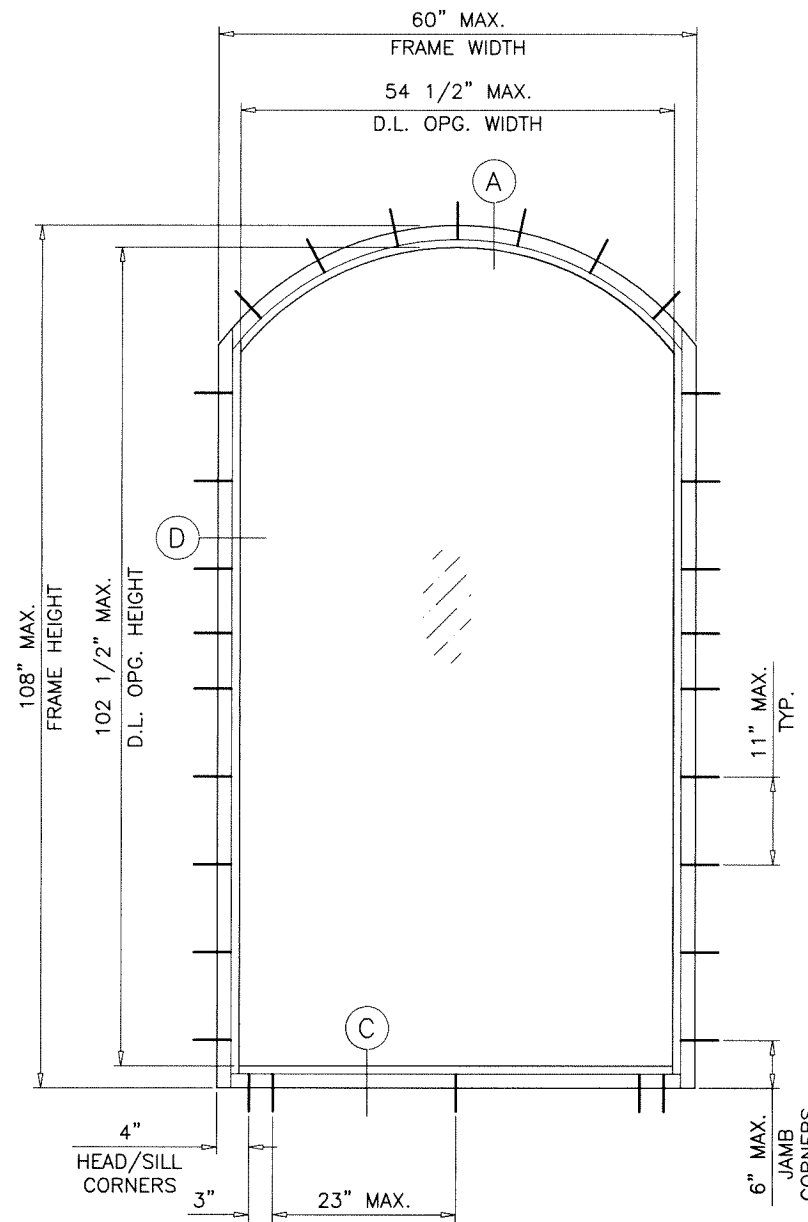
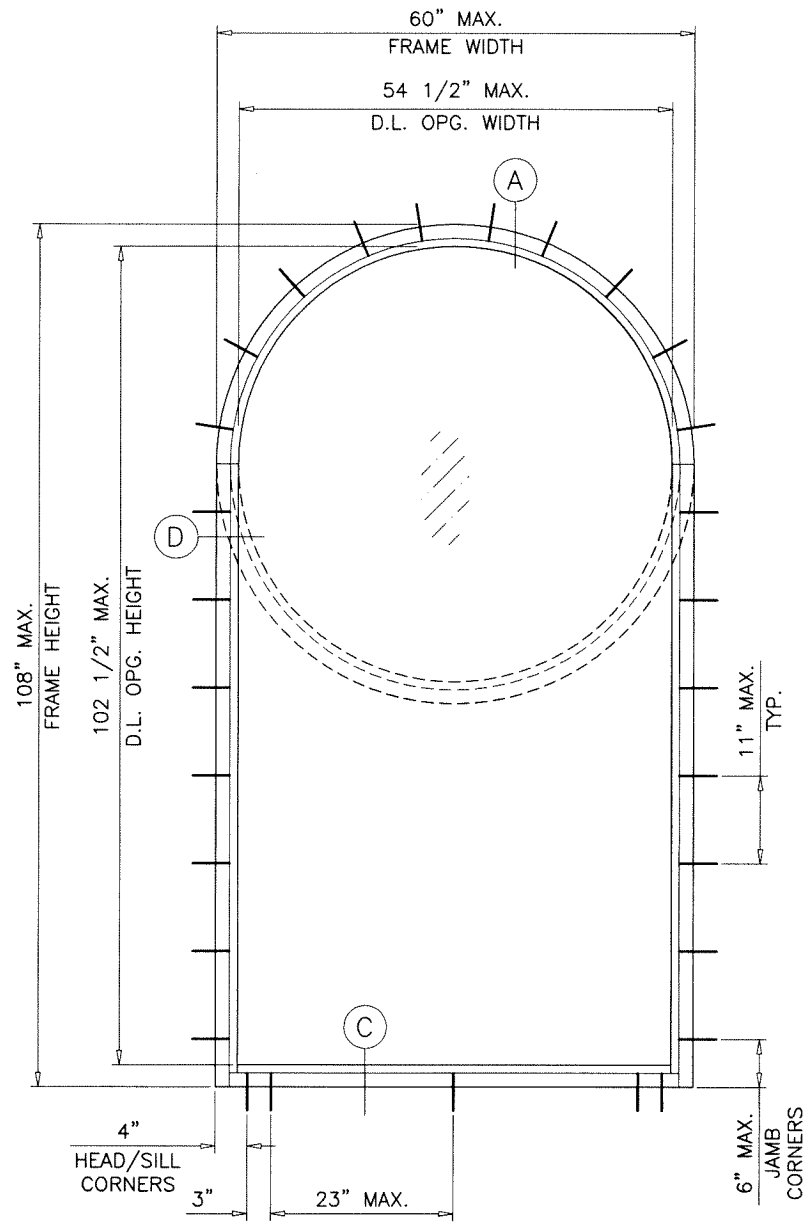
**AL-FAROOQ CORPORATION**  
 ENGINEERS & PRODUCT DEVELOPMENT  
 9360 SUNSET DRIVE, SUITE 220  
 MIAMI, FLORIDA 33173 (C.A.N. 3538)  
 TEL. (305) 264-8100 FAX. (305) 262-6978

SERIES SMI-090 ALUM WINDOW WALL (L.M.I.)  
**Aldora Aluminum & Glass Products Inc.**  
 4250 Coral Ridge Drive, Suite 101  
 Coral Springs, FL 33065  
 Tel. (954) 784-6900 Fax. (954) 784-6901

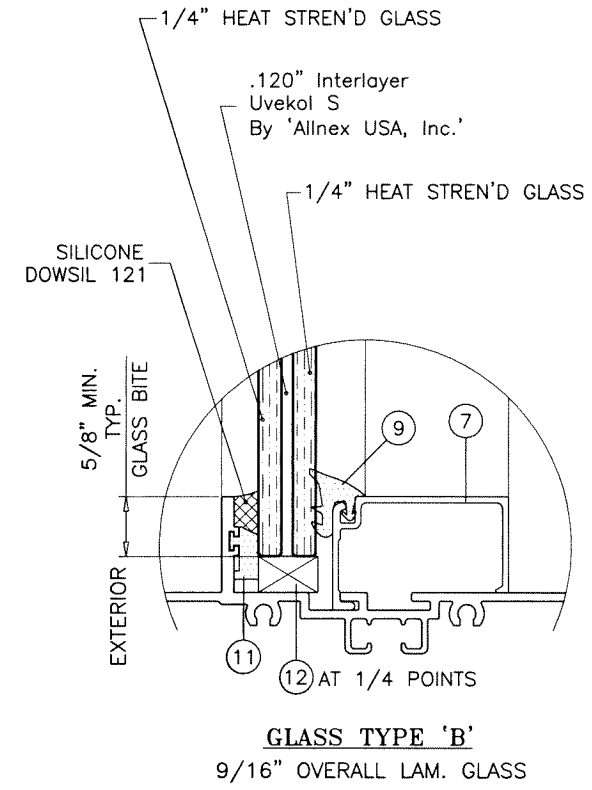
no	date	by	description
A	08.19.25		JAMB NOTES ADDED

date: 07-03-23  
 scale: 1/2"=1'-0"  
 dr. by: TARIQ  
 chk. by:

drawing no. **23-30F**  
 sheet 1 of 19



**GLASS TYPE 'B'**  
**MAXIMUM DESIGN LOAD RATING = + 80.0 PSF**  
 (FOR SHAPES AND SIZE  
 SHOWN ON THIS SHEET ONLY) **- 100.0 PSF**



Sealed: 8/21/2025



FL #19973

**a f c**  
**AL-FAROOQ CORPORATION**  
 ENGINEERS & PRODUCT DEVELOPMENT  
 9360 SUNSET DRIVE, SUITE 220 (C.A.N. 5538)  
 MIAMI, FLORIDA 33173 FAX. (305) 262-6978  
 TEL. (305) 264-8100

SERIES SMI-090 ALUM WINDOW WALL (L.M.I.)  
**Aldora Aluminum & Glass Products Inc.**  
 4250 Coral Ridge Drive, Suite 101  
 Coral Springs, FL 33065  
 Tel. (954) 784-6900 Fax. (954) 784-6901

no	date	by	description

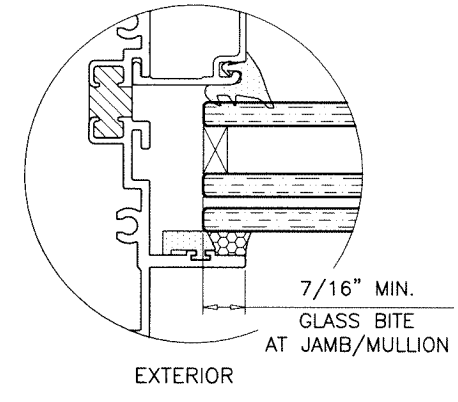
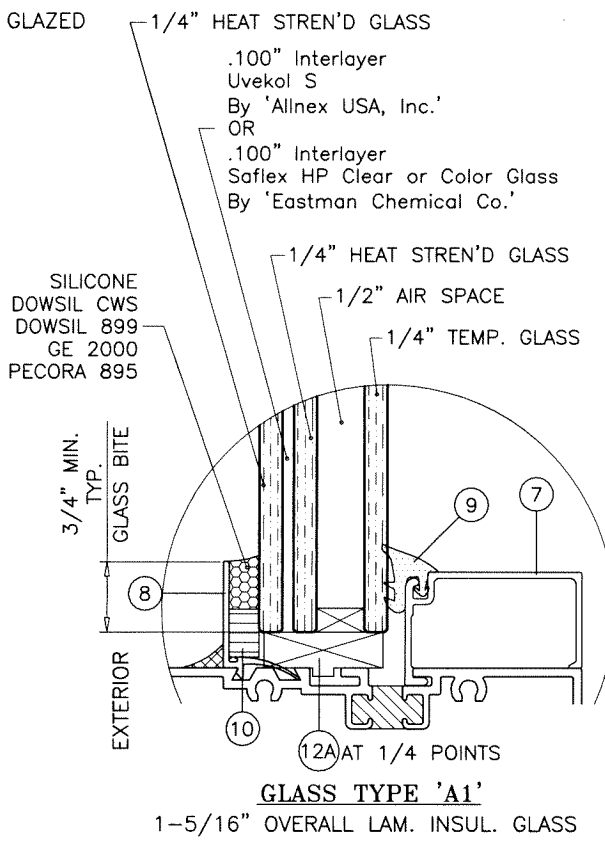
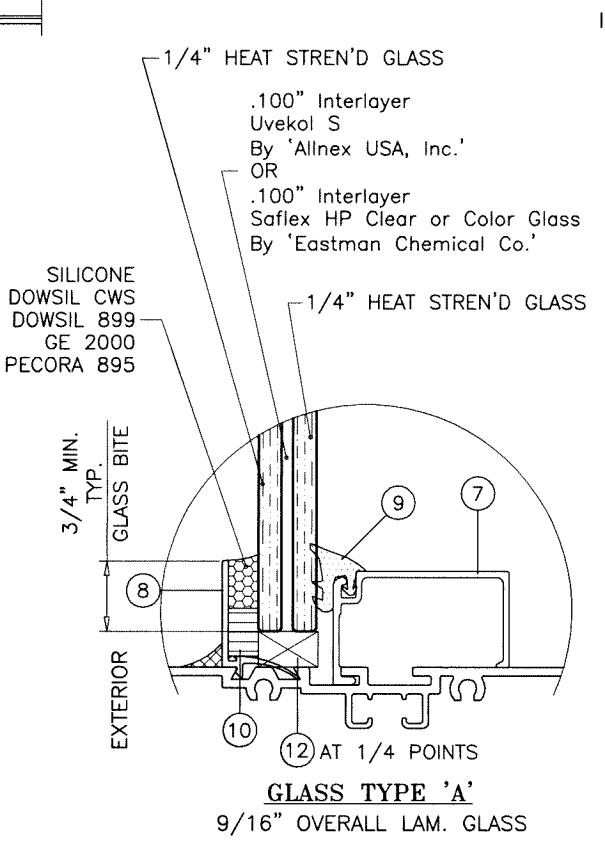
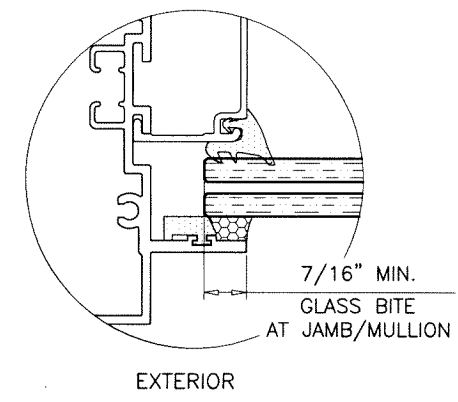
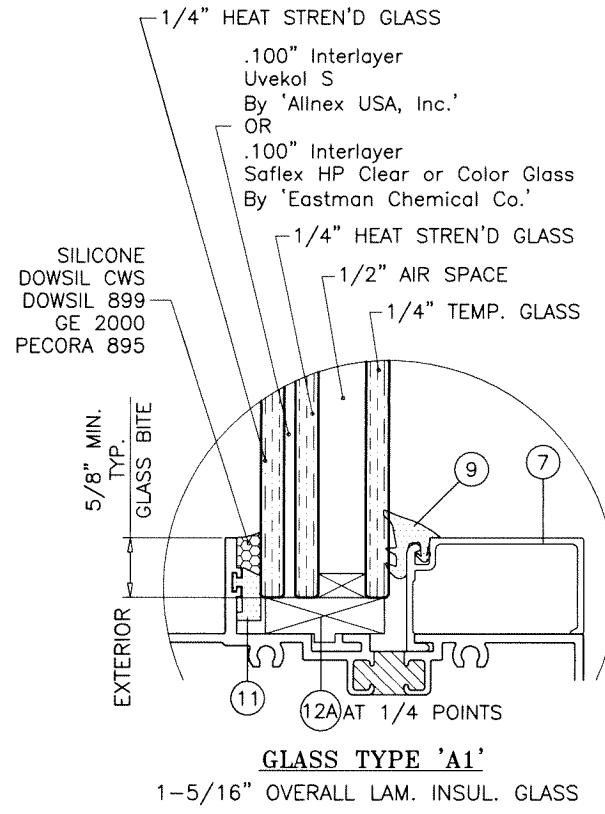
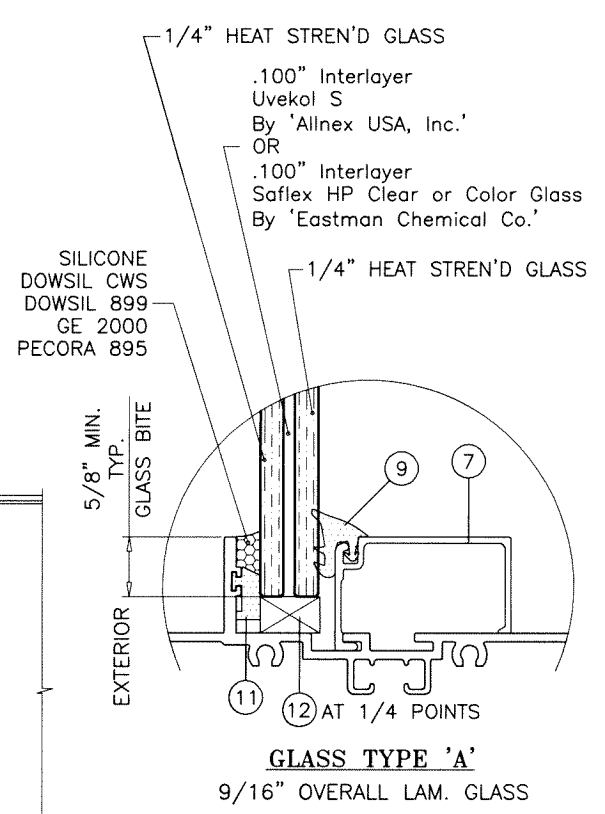
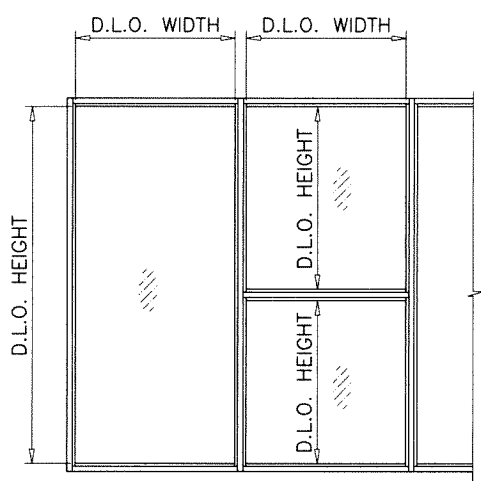
  

date: 07-03-23	scale: 1/2"=1'-0"	dr. by: TARIQ	chk. by:
drawing no. 23-30F			
sheet 2 of 19			

COMP-ANL\23-30-AAG

GLASS LOAD CAPACITY - PSF			
NOMINAL DIMS.		GLASS TYPES 'A' & 'A1'	
D.L.O. WIDTH	D.L.O. HEIGHT	EXT. (+) INT. (-)	
30"	66-1/2"	90.0	
36"		90.0	
42"		90.0	
48"		90.0	
54"		90.0	
60"		90.0	
66-1/2"		90.0	
30"	72-1/2"	90.0	
36"		90.0	
42"		90.0	
48"		90.0	
54"		90.0	
60"		90.0	
66"		90.0	
30"	78-1/2"	90.0	
36"		90.0	
42"		90.0	
48"		90.0	
54"		90.0	
60"		90.0	
66"		90.0	
30"	84-1/2"	90.0	
36"		90.0	
42"		90.0	
48"		90.0	
54"		90.0	
60"		90.0	
66"		90.0	
30"	90-1/2"	90.0	
36"		90.0	
42"		90.0	
48"		90.0	
54"		90.0	
60"		90.0	
66"		90.0	
30"	96-1/2"	90.0	
36"		90.0	
42"		90.0	
48"		90.0	
54"		90.0	
60"		90.0	
66"		90.0	
30"	102-1/2"	90.0	
36"		90.0	
42"		90.0	
48"		90.0	
54"		90.0	
60"		90.0	
66"		90.0	
30"	108"	90.0	
36"		90.0	
42"		90.0	
44-1/4"		90.0	
30"		114"	90.0
36"			90.0
42"	90.0		
44-1/4"	90.0		
30"	114-1/2"		90.0
36"			90.0
42"		90.0	
44-1/4"		90.0	

INTERPOLATION BETWEEN WIDTHS OR HEIGHTS ALLOWED.



1/2" AIR SPACE CONSISTING OF:  
SPACER:  
'PROFIGLASS' ALUMINUM SPACER  
BY 'RAMAPO USA'  
PERIMETER SEALANT:  
SILICONE  
DOWSIL CWS  
DOWSIL 899  
GE 2000  
PECORA 895

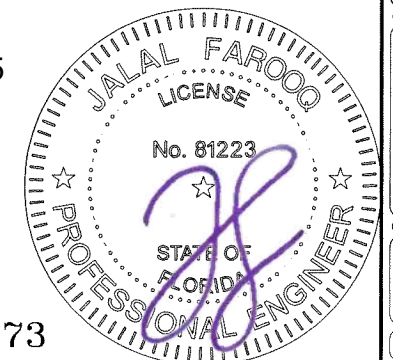
GLAZING OPTIONS

GLAZING OPTIONS

NOTE:  
WINDOW WALL FRAMES AT INSULATED GLASS OPTION  
MAY BE WITH OR WITHOUT THERMAL BREAK.

GLASS

Sealed: 8/21/2025



**af c**  
**AL-FAROOQ CORPORATION**  
ENGINEERS & PRODUCT DEVELOPMENT  
9360 SUNSET DRIVE, SUITE 220  
MIAMI, FLORIDA 33173 (C.A.N. 3538)  
TEL. (305) 264-8100 FAX. (305) 262-6978  
COMP-ANL 23-30-AAG

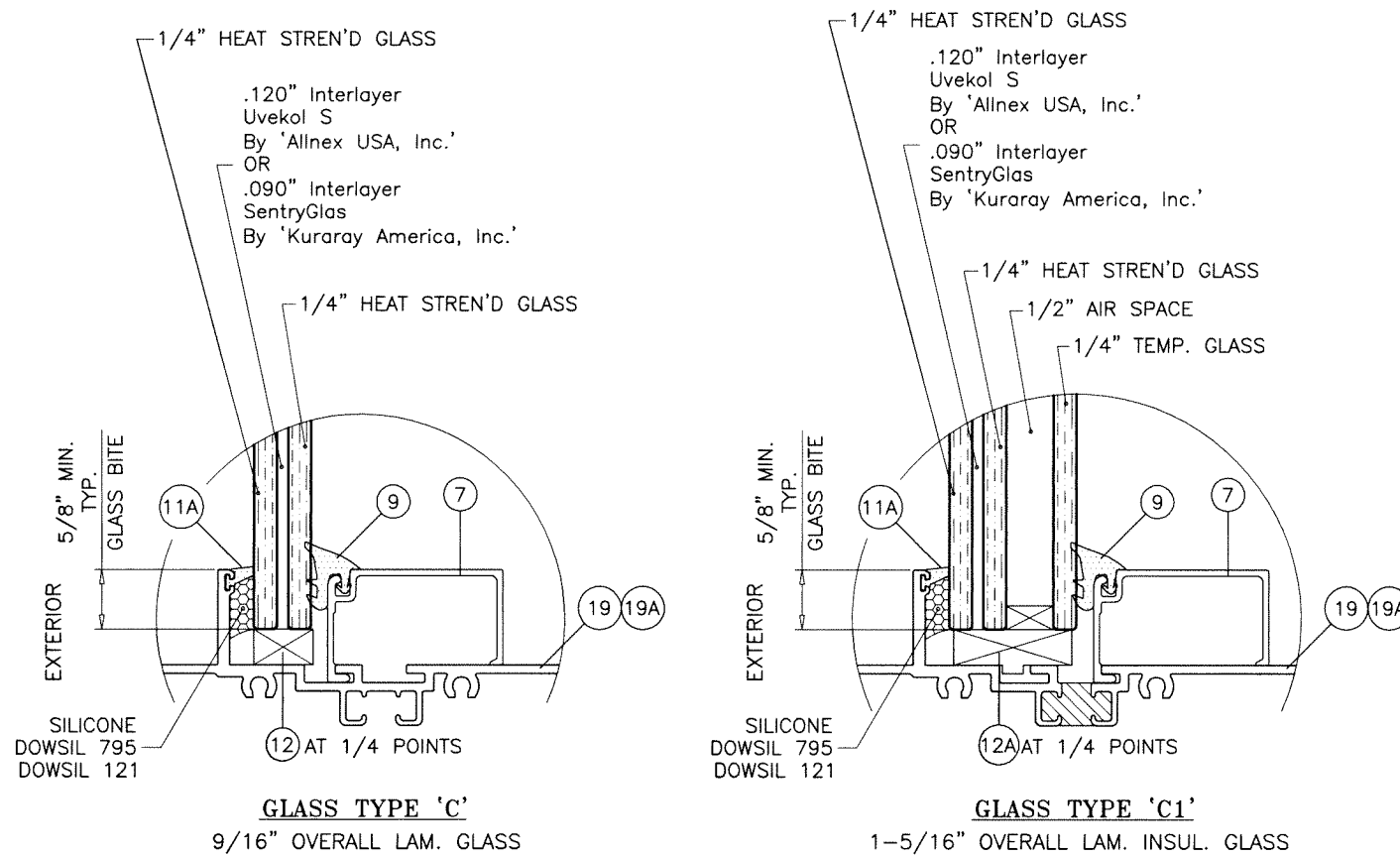
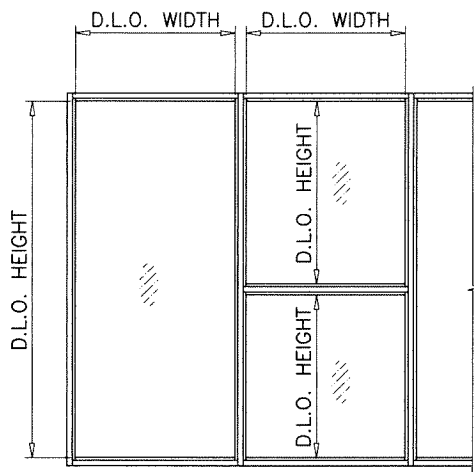
SERIES SMI-090 ALUM WINDOW WALL (L.M.I.)  
**Aldora Aluminum & Glass Products Inc.**  
4250 Coral Ridge Drive, Suite 101  
Coral Springs, FL 33065  
Tel. (954) 784-6900 Fax. (954) 784-6901

revisions:	no	date	by	description
date:	07-03-23	scale:	1/2" = 1"	dr. by:
				TARIQ
			chk. by:	
drawing no.	23-30F			
sheet	3 of 19			

FL #19973

GLASS LOAD CAPACITY - PSF		
NOMINAL DIMS.		GLASS TYPES 'C' & 'C1'
D.L.O. WIDTH	D.L.O. HEIGHT	EXT. (+) INT. (-)
30"	66-1/2"	80.0
36"		80.0
42"		80.0
48"		80.0
54"		80.0
60"		80.0
66-1/2"		80.0
30"	72-1/2"	80.0
36"		80.0
42"		80.0
48"		80.0
54"		80.0
60"		80.0
66"		80.0
30"	78-1/2"	80.0
36"		80.0
42"		80.0
48"		80.0
54"		80.0
60"		80.0
66"		80.0
30"	84-1/2"	80.0
36"		80.0
42"		80.0
48"		80.0
54"		80.0
60"		80.0
66"		80.0
30"	90-1/2"	80.0
36"		80.0
42"		80.0
48"		80.0
54"		80.0
60"		80.0

INTERPOLATION BETWEEN WIDTHS OR HEIGHTS ALLOWED.



**GLAZING OPTIONS**  
INTERIOR GLAZED

1/2" AIR SPACE CONSISTING OF:  
SPACER:  
'PROFIGLASS' ALUMINUM SPACER  
BY 'RAMAPO USA'  
PERIMETER SEALANT:  
SILICONE  
DOWSIL CWS  
DOWSIL 899  
GE 2000  
PECORA 895

NOTE:  
GLASS CAPACITIES ON THIS SHEET ARE  
BASED ON ASTM E1300-09 (3 SEC. GUSTS).

GLASS

FL #19973



**af c**  
**AL-FAROOQ CORPORATION**  
ENGINEERS & PRODUCT DEVELOPMENT  
9360 SUNSET DRIVE, SUITE 220 (C.A.N. 3538)  
MIAMI, FLORIDA 33173 TEL. (305) 262-6978  
TEL. (305) 264-8100 FAX. (305) 262-6978  
COMP-ANL\23-30-AAG

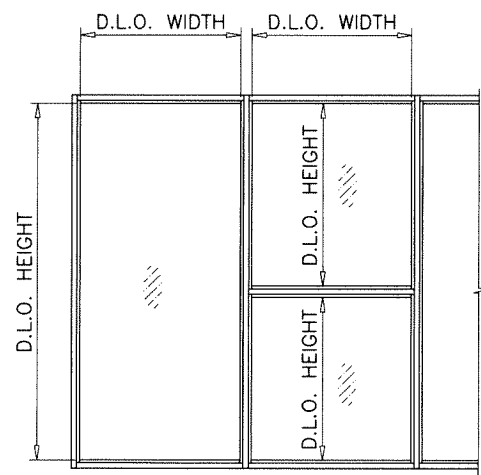
SERIES SMI-090 ALUM WINDOW WALL (L.M.I.)  
**Aldora Aluminum & Glass Products Inc.**  
4250 Coral Ridge Drive, Suite 101  
Coral Springs, FL 33065  
Tel. (954) 784-6900 Fax. (954) 784-6901

revisions:	no	date	by	description
date:	07-03-23	scale:	1/2" = 1"	
dr. by:	TARIQ	chk. by:		
drawing no.	23-30F			
sheet	4 of 19			

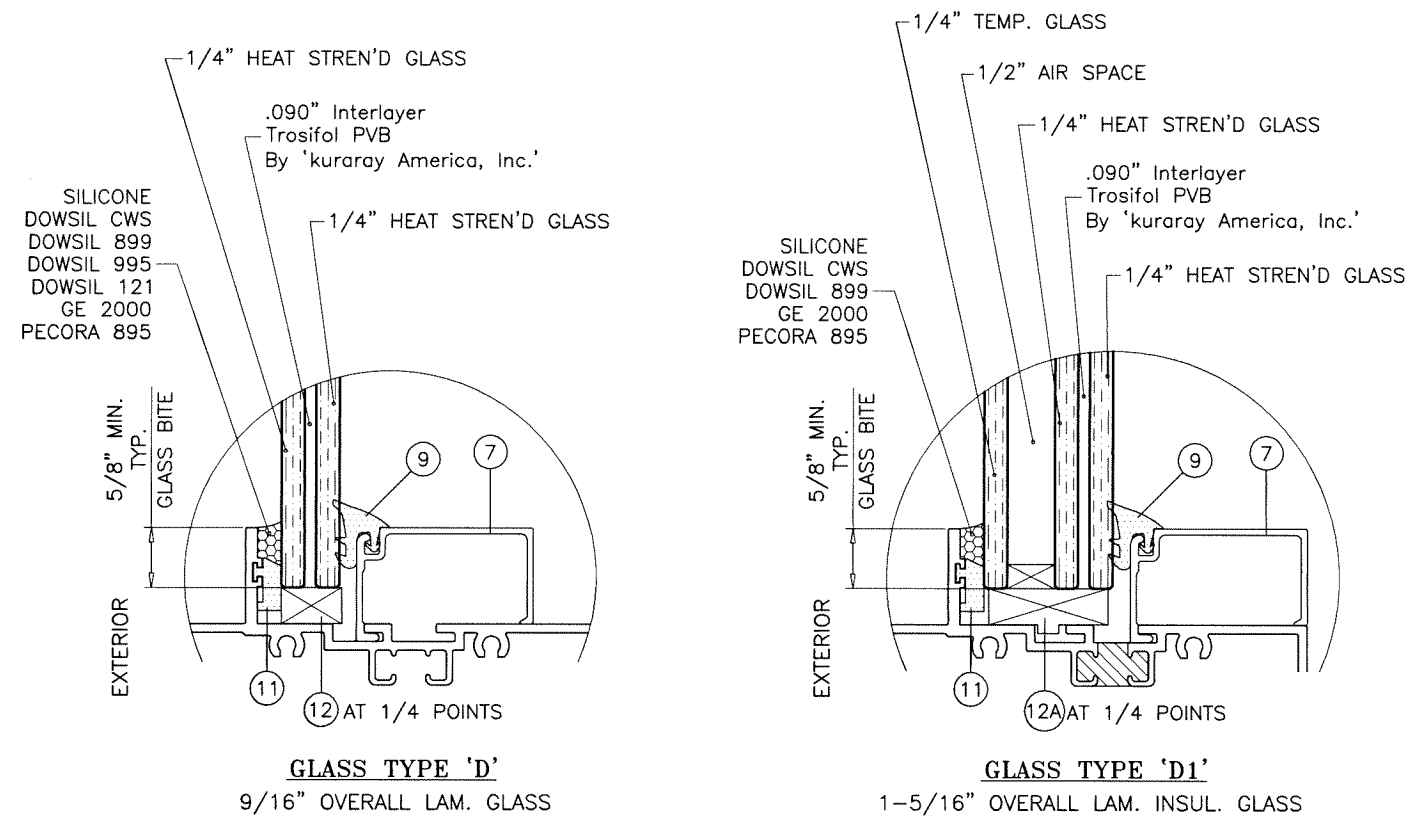
Sealed: 8/21/2025

GLASS LOAD CAPACITY - PSF				
NOMINAL DIMS.		GLASS TYPES 'D' & 'D1'		
D.L.O. WIDTH	D.L.O. HEIGHT	EXT. (+)	INT. (-)	
30"	66-1/2"	70.0	75.0	
36"		70.0	75.0	
42"		70.0	75.0	
48"		70.0	75.0	
54"		70.0	75.0	
60"		70.0	75.0	
66-1/2"		70.0	75.0	
30"	72-1/2"	70.0	75.0	
36"		70.0	75.0	
42"		70.0	75.0	
48"		70.0	75.0	
54"		70.0	75.0	
60"		70.0	75.0	
66"		70.0	75.0	
30"	78-1/2"	70.0	75.0	
36"		70.0	75.0	
42"		70.0	75.0	
48"		70.0	75.0	
54"		70.0	75.0	
60"		70.0	75.0	
30"	84-1/2"	70.0	75.0	
36"		70.0	75.0	
42"		70.0	75.0	
48"		70.0	75.0	
54"		70.0	75.0	
60"		70.0	75.0	
30"	90-1/2"	70.0	75.0	
36"		70.0	75.0	
42"		70.0	75.0	
48"		70.0	75.0	
54"		70.0	75.0	
60"		70.0	75.0	
30"	96-1/2"	70.0	75.0	
36"		70.0	75.0	
42"		70.0	75.0	
48"		70.0	75.0	
54"		70.0	75.0	
60"		70.0	75.0	
30"	102-1/2"	70.0	75.0	
36"		70.0	75.0	
42"		70.0	75.0	
48"		70.0	75.0	
54"		70.0	75.0	
60"		70.0	75.0	
30"	108"	70.0	75.0	
36"		70.0	75.0	
42"		70.0	75.0	
44-1/4"		70.0	75.0	
30"		114"	70.0	75.0
36"			70.0	75.0
42"	70.0		75.0	
44-1/4"	70.0		75.0	
30"	114-1/2"		70.0	75.0
36"			70.0	75.0
42"		70.0	75.0	
44-1/4"		70.0	75.0	

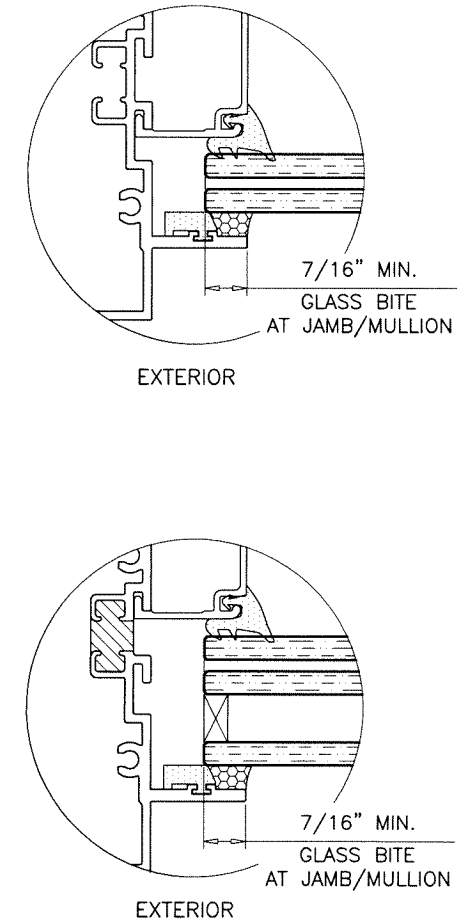
INTERPOLATION BETWEEN WIDTHS OR HEIGHTS ALLOWED.



NOTE:  
GLASS CAPACITIES ON THIS SHEET ARE  
BASED ON ASTM E1300-09 (3 SEC. GUSTS).



**GLAZING OPTIONS**  
INTERIOR GLAZED



**1/2" AIR SPACE CONSISTING OF:**  
SPACER:  
'PROFIGLASS' ALUMINUM SPACER  
BY 'RAMAPO USA'  
PERIMETER SEALANT:  
SILICONE  
DOWSIL CWS  
DOWSIL 899  
GE 2000  
PECORA 895

Sealed: 8/21/2025



GLASS

FL #19973

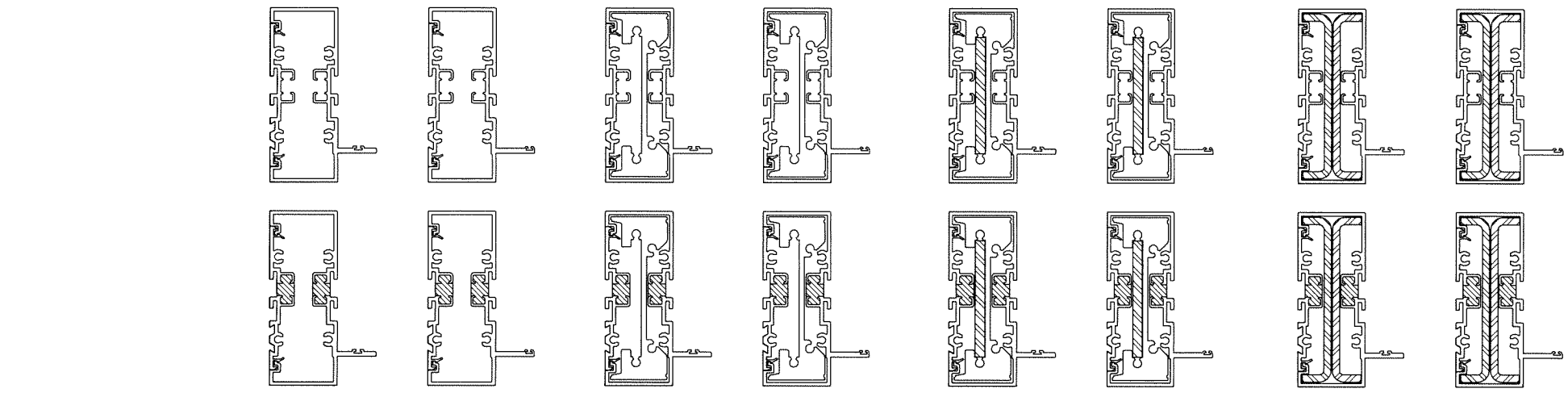
**af c**  
**AL-FAROOQ CORPORATION**  
ENGINEERS & PRODUCT DEVELOPMENT  
9360 SUNSET DRIVE, SUITE 220  
MIAMI, FLORIDA 33173 (C.A.N. 3538)  
TEL. (305) 264-8100 FAX. (305) 262-6978  
COMP-ANL 23-30-AAG

SERIES SMI-090 ALUM WINDOW WALL (L.M.I.)  
**Aldora Aluminum & Glass Products Inc.**  
4250 Coral Ridge Drive, Suite 101  
Coral Springs, FL 33065  
Tel. (954) 784-6900 Fax. (954) 784-6901

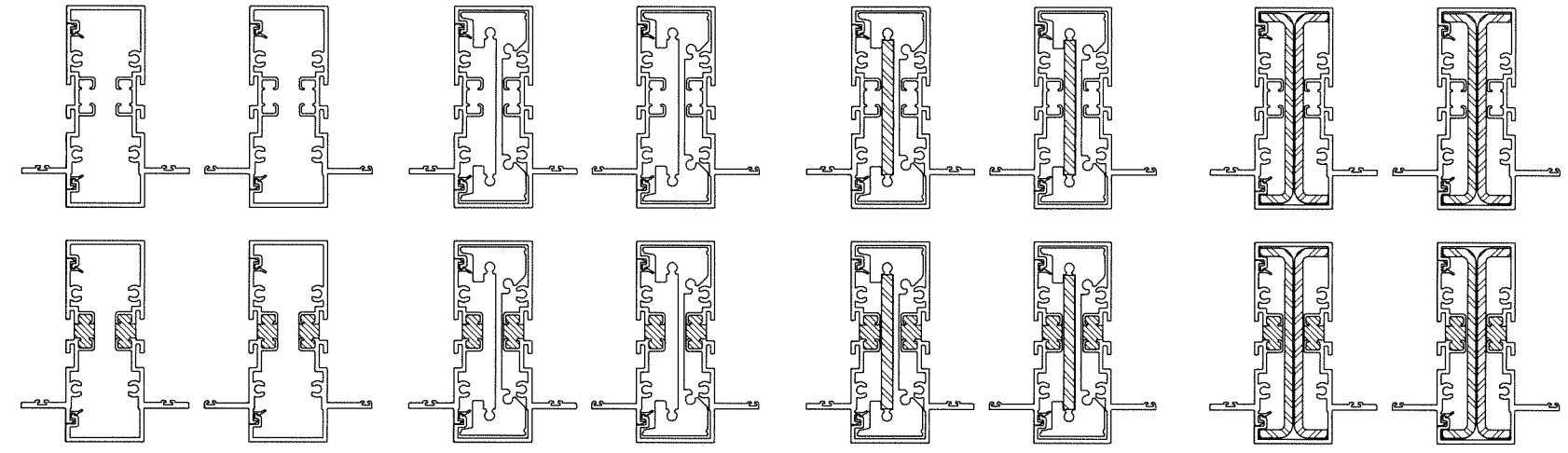
revisions:	no	date	by	description
date:	07-03-23	scale:	1/2" = 1"	
dr. by:	TARIQ	chk. by:		
drawing no.	23-30F			
sheet	5 of 19			

DESIGN LOAD CAPACITY - PSF JAMB/MULLION WITHOUT INTERMEDIATE HORIZONTALS				
NOMINAL DIMS.		JAMB 'J1'	JAMB 'J2'	JAMB 'J3/J4'
WIDTH (W)	FRAME HEIGHT	MULLION 'M1'	MULLION 'M2'	MULL 'M3/M4'
		EXT. (+) INT. (-)	EXT. (+) INT. (-)	EXT. (+) INT. (-)
30"	78"	80.0	90.0	90.0
36"		80.0	90.0	90.0
42"		80.0	90.0	90.0
48"		80.0	90.0	90.0
54"		80.0	90.0	90.0
60"		80.0	90.0	90.0
30"	84"	80.0	90.0	90.0
36"		80.0	90.0	90.0
42"		80.0	90.0	90.0
48"		80.0	90.0	90.0
54"		73.6	90.0	90.0
60"		-	90.0	90.0
30"	90"	80.0	90.0	90.0
36"		80.0	90.0	90.0
42"		76.2	90.0	90.0
48"		68.3	90.0	90.0
54"		62.5	90.0	90.0
60"		-	90.0	90.0
30"	96"	80.0	90.0	90.0
36"		75.7	90.0	90.0
42"		66.0	90.0	90.0
48"		59.0	90.0	90.0
54"		-	90.0	90.0
60"		-	90.0	90.0
30"	102"	-	90.0	90.0
36"		-	90.0	90.0
42"		-	90.0	90.0
48"		-	90.0	90.0
54"		-	-	80.0
30"	108"	-	90.0	90.0
36"		-	90.0	90.0
42"		-	90.0	90.0
48"		-	87.5	87.5
54"		-	-	80.0
30"	114"	-	-	80.0
36"		-	-	80.0
42"		-	-	80.0
48"		-	-	80.0
54"		-	-	80.0
30"	120"	-	-	80.0
36"		-	-	80.0
42"		-	-	80.0
48"		-	-	80.0
54"		-	-	80.0

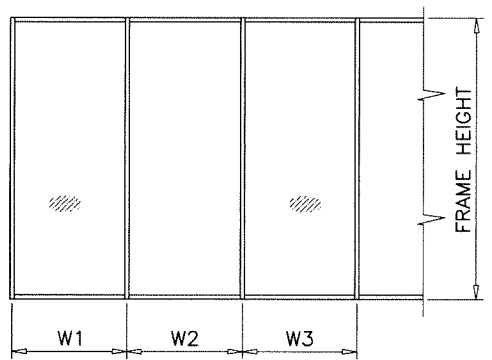
NOTE:  
INTERPOLATION BETWEEN WIDTHS OR HEIGHTS ALLOWED.



JAMB 'J1'		JAMB 'J2'		JAMB 'J3'		JAMB 'J4'	
Ix IN <sup>4</sup>	Sx IN <sup>3</sup>	Ix IN <sup>4</sup>	Sx IN <sup>3</sup>	Ix IN <sup>4</sup>	Sx IN <sup>3</sup>	Ix IN <sup>4</sup>	Sx IN <sup>3</sup>
3.634	1.720	9.241	4.375	9.241	4.375	3.634	1.720
ALUMINUM		ALUMINUM		ALUMINUM		ALUMINUM	
STEEL		STEEL		STEEL		STEEL	
TOTAL		TOTAL		TOTAL		TOTAL	
Ix ALUM + Ix STL X 2.9		Ix ALUM + Ix STL X 2.9		Ix ALUM + Ix STL X 2.9		Ix ALUM + Ix STL X 2.9	
10.871		15.657		10.871		15.657	



MULLION 'M1'		MULLION 'M2'		MULLION 'M3'		MULLION 'M4'	
Ix IN <sup>4</sup>	Sx IN <sup>3</sup>	Ix IN <sup>4</sup>	Sx IN <sup>3</sup>	Ix IN <sup>4</sup>	Sx IN <sup>3</sup>	Ix IN <sup>4</sup>	Sx IN <sup>3</sup>
3.854	1.614	9.461	3.963	9.461	3.963	3.854	1.614
ALUMINUM		ALUMINUM		ALUMINUM		ALUMINUM	
STEEL		STEEL		STEEL		STEEL	
TOTAL		TOTAL		TOTAL		TOTAL	
Ix ALUM + Ix STL X 2.9		Ix ALUM + Ix STL X 2.9		Ix ALUM + Ix STL X 2.9		Ix ALUM + Ix STL X 2.9	
11.092		15.877		11.092		15.877	



WIDTH (W) = W1  
AT FRAME JAMB

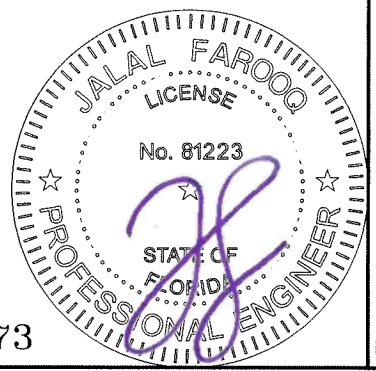
WIDTH (W) =  $\frac{W2 + W3}{2}$   
AT FRAME MULLION

NOTE:  
JAMBS MAY BE SECURED (ANCHORED)  
OR UNSECURED (UNANCHORED)  
FOR SECURED JAMBS, USE ANCHOR SPACING  
SHOWN ON SHEET 1 (DETAIL D).  
FOR UNSECURED JAMBS VERIFY MAX. GAPS ON  
SHEETS 13 (DETAIL D1).

Sealed: 8/21/2025

MULLIONS

FL #19973



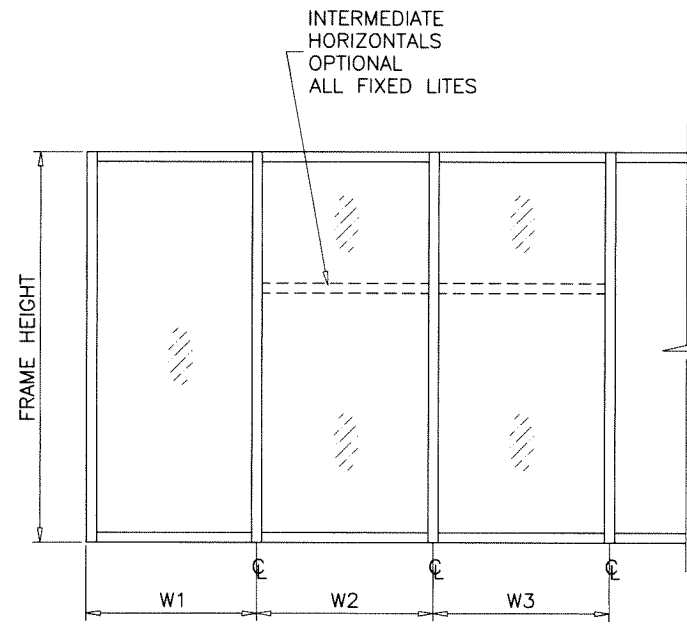
**AL-FAROOQ CORPORATION**  
ENGINEERS & PRODUCT DEVELOPMENT  
9360 SUNSET DRIVE, SUITE 220  
MIAMI, FLORIDA 33173  
TEL. (305) 264-8100 FAX. (305) 262-6978  
C.A.N. 3538

SERIES SMI-090 ALUM WINDOW WALL (L.M.I.)  
**Aldora Aluminum & Glass Products Inc.**  
4250 Coral Ridge Drive, Suite 101  
Coral Springs, FL 33065  
Tel. (954) 784-6900 Fax. (954) 784-6901

revisions:	no	date	by	description
date:	07-03-23	scale:	-	
dr. by:	TARIQ	chk. by:		
drawing no. 23-30F				
sheet 6 of 19				

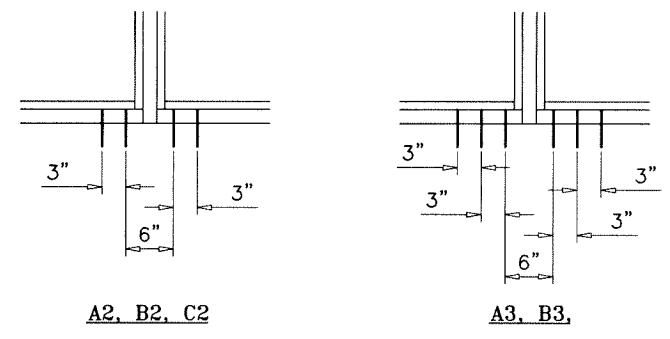
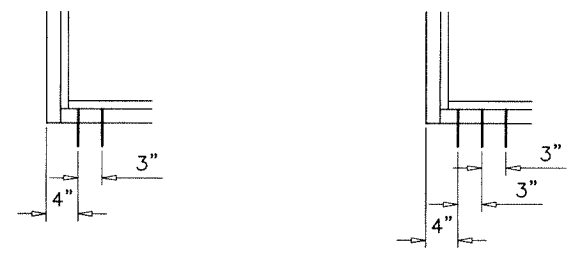


ANCHOR LOAD CAPACITY - PSF EXT.(+) & INT.(-)						
NOMINAL DIMS.		ANCHORS TYPE 'A'		ANCHORS TYPE 'B'		ANCHORS 'C'
WIDTH (W)	FRAME HEIGHT	A2	A3	B2	B3	C2
30"	84"	90.0	90.0	90.0	90.0	90.0
36"		90.0	90.0	90.0	90.0	90.0
42"		90.0	90.0	90.0	90.0	90.0
48"		90.0	90.0	90.0	90.0	90.0
54"		90.0	90.0	90.0	90.0	90.0
60"		90.0	90.0	90.0	90.0	90.0
30"	90"	90.0	90.0	90.0	90.0	90.0
36"		90.0	90.0	90.0	90.0	90.0
42"		90.0	90.0	90.0	90.0	90.0
48"		90.0	90.0	90.0	90.0	90.0
54"		86.7	90.0	90.0	90.0	90.0
60"		81.9	90.0	89.3	90.0	90.0
30"	96"	90.0	90.0	90.0	90.0	90.0
36"		90.0	90.0	90.0	90.0	90.0
42"		90.0	90.0	90.0	90.0	90.0
48"		85.3	90.0	90.0	90.0	90.0
54"		79.1	90.0	86.3	90.0	90.0
60"		74.5	90.0	81.2	90.0	90.0
30"	102"	90.0	90.0	90.0	90.0	90.0
36"		90.0	90.0	90.0	90.0	90.0
42"		86.7	90.0	90.0	90.0	90.0
48"		78.8	90.0	85.8	90.0	90.0
54"		72.8	90.0	79.4	90.0	90.0
60"		66.8	90.0	73.0	90.0	90.0
30"	108"	90.0	90.0	90.0	90.0	90.0
36"		90.0	90.0	90.0	90.0	90.0
42"		80.7	90.0	88.0	90.0	90.0
48"		73.1	90.0	79.7	90.0	90.0
30"	114"	90.0	90.0	90.0	90.0	90.0
36"		85.3	90.0	90.0	90.0	90.0
42"		75.5	90.0	82.3	90.0	90.0
48"		68.3	90.0	74.4	90.0	90.0
30"	120"	90.0	90.0	90.0	90.0	90.0
36"		80.3	90.0	87.5	90.0	90.0
42"		70.9	90.0	77.3	90.0	90.0
48"		64.0	90.0	69.8	90.0	90.0



WIDTH (W) = W1  
AT FRAME JAMB

WIDTH (W) =  $\frac{W2 + W3}{2}$   
AT FRAME MULLION



- ANCHORS TYPES:**
- A2 = (2) ANCHORS TYPE 'A' AT EACH SIDE OF JAMB AND MULLION
  - B2 = (2) ANCHORS TYPE 'B' AT EACH SIDE OF JAMB AND MULLION
  - C2 = (2) ANCHORS TYPE 'C' AT EACH SIDE OF JAMB AND MULLION
  - A3 = (3) ANCHORS TYPE 'A' AT EACH SIDE OF JAMB AND MULLION
  - B3 = (3) ANCHORS TYPE 'B' AT EACH SIDE OF JAMB AND MULLION
  - C3 = (3) ANCHORS TYPE 'C' AT EACH SIDE OF JAMB AND MULLION

WOOD BUCKS AND METAL STRUCTURE NOT BY 'ALDORA ALUMINUM & GLASS PRODUCTS' MUST SUSTAIN LOADS IMPOSED BY GLAZING SYSTEM AND TRANSFER THEM TO THE BUILDING STRUCTURE.

**TYPICAL ANCHORS:** SEE ELEV. FOR SPACING

**TYPE 'A'**  
**1/4" DIA. ULTRACON+ BY 'DEWALT'** (Fu=164 KSI, Fy=148 KSI)  
 INTO 2BY WOOD BUCKS OR WOOD STRUCTURES  
 1-3/8" MIN. PENETRATION INTO WOOD (HEAD/SILL/JAMBS)  
 THRU 1BY BUCKS INTO CONC. OR BLOCKS  
 1-1/4" MIN. EMBED INTO CONCRETE (HEAD/SILL/JAMBS)  
 1-1/4" MIN. EMBED INTO BLOCKS (JAMBS)

**ANCHOR EDGE DISTANCES**  
 INTO CONCRETE = 2-1/2" MIN.  
 INTO WOOD STRUCTURE = 1" MIN.

**TYPE 'B'**  
**1/4" DIA. ULTRACON+ BY 'DEWALT'** (Fu=164 KSI, Fy=148 KSI)  
 DIRECTLY INTO CONCRETE OR BLOCKS  
 1-1/4" MIN. EMBED INTO CONCRETE (HEAD/SILL/JAMBS)  
 1-1/4" MIN. EMBED INTO BLOCKS (JAMBS)

**ANCHOR EDGE DISTANCES**  
 INTO CONCRETE = 2-1/2" MIN.

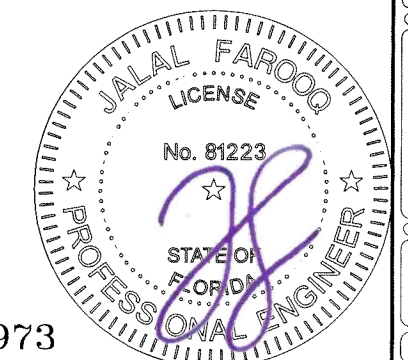
**TYPE 'C'**  
**#14 SMS OR SELF DRILLING SCREWS ST/ST** (GRADE 2 CRS)  
 INTO F.B.C. APPROVED MULLIONS  
 OR  
 INTO METAL STRUCTURES (HEAD/SILL/JAMBS)  
 (3) THREADS MIN. PENETRATION BEYOND SUBSTRATE  
 ALUMINUM: 1/8" THK. MIN. (6063-T5 MIN.)  
 STEEL: 1/8" THK. MIN. (Fy = 36 KSI MIN.)  
 (STEEL IN CONTACT WITH ALUMINUM TO BE PLATED OR PAINTED)

**ANCHOR EDGE DISTANCES**  
 INTO METAL STRUCTURE = 3/4" MIN.

WOOD AT HEAD, SILL OR JAMBS SG = 0.55 MIN.  
 CONCRETE AT HEAD, SILL OR JAMBS f'c = 3000 PSI MIN.  
 C-90 HOLLOW/FILLED BLOCK AT JAMBS f'm = 2000 PSI MIN.

Sealed: 8/21/2025

ANCHORS



FL #19973

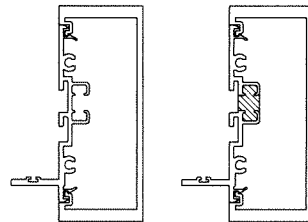
**af c**  
**AL-FAROOQ CORPORATION**  
 ENGINEERS & PRODUCT DEVELOPMENT  
 9360 SUNSET DRIVE, SUITE 220  
 MIAMI, FLORIDA 33173 (C.A.N. 3538)  
 TEL. (305) 262-6978 FAX. (305) 262-6978  
 COMP-ANL\23-30-AAG

SERIES SMI-090 ALUM WINDOW WALL (L.M.I.)  
**Aldora Aluminum & Glass Products Inc.**  
 4250 Coral Ridge Drive, Suite 101  
 Coral Springs, FL 33065  
 Tel. (954) 784-6900 Fax. (954) 784-6901

revisions:	no	date	by	description
date:	07-03-23	scale:	1/2" = 1"	
dr. by:	TARIQ	chk. by:		
drawing no.	23-30F			
sheet	8 of 19			

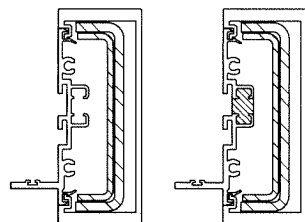
DOOR MULLION LOAD CAPACITY		
NOMINAL DIMS.		W/O REINF.
WIDTH (W)	FRAME HEIGHT	EXT.(+) & INT.(-)
30"	81-3/4"	90.0
36"		90.0
42"		90.0
48"		90.0
30"	85-3/4"	90.0
36"		90.0
42"		90.0
48"		90.0
30"	91-3/4"	90.0
36"		90.0
42"		90.0
30"	96-3/4"	90.0
36"		90.0
42"		90.0
30"	97-3/4"	90.0
36"		90.0
42"		90.0

DOOR MULLION LOAD CAPACITY		
NOMINAL DIMS.		WITH REINF.
WIDTH (W)	FRAME HEIGHT	EXT.(+) & INT.(-)
24"	80"	90.0
30"		90.0
36"		90.0
42"		90.0
48"	84"	90.0
54"		90.0
60"		90.0
66"		90.0
24"	90"	90.0
30"		90.0
36"		90.0
42"		90.0
48"	96"	90.0
54"		90.0
60"		90.0
66"		90.0
24"	102"	90.0
30"		90.0
36"		90.0
42"		90.0
48"	108"	90.0
54"		90.0
60"		90.0
66"		90.0
24"	114"	80.0
30"		80.0
36"		80.0
42"		80.0
24"	120"	80.0
30"		80.0
36"		80.0
42"		80.0



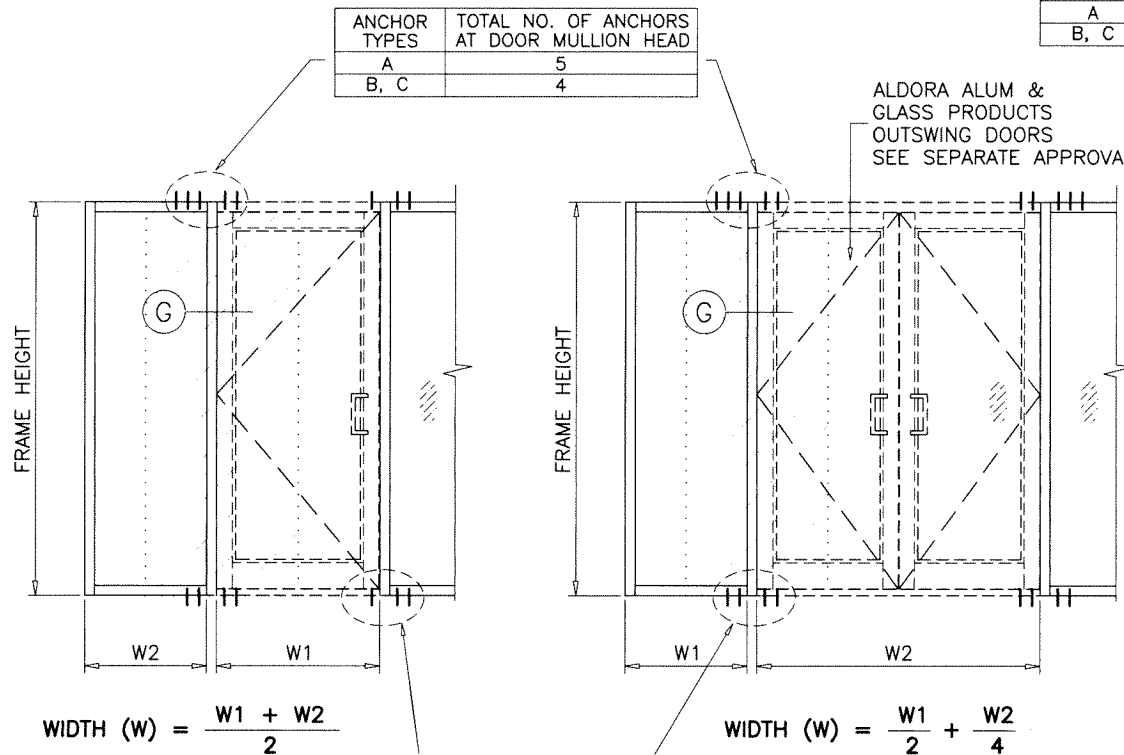
DOOR MULLION  
WITHOUT REINFORCING

Ix IN <sup>4</sup>	Sx IN <sup>3</sup>
5.856	2.602



DOOR MULLION  
WITH REINFORCING

	Ix IN <sup>4</sup>	Sx IN <sup>3</sup>
ALUMINUM	5.856	2.602
STEEL	2.740	1.391
TOTAL Ix ALUM + Ix STL X 2.9	13.802	



DOOR MULLION

Sealed: 8/21/2025



FL #19973

**af c**  
AL-FAROOQ CORPORATION  
ENGINEERS & PRODUCT DEVELOPMENT  
9360 SUNSET DRIVE, SUITE 220  
MIAMI, FLORIDA 33173 (C.A.N. 3538)  
TEL. (305) 264-8100 FAX. (305) 262-6978  
COMP-ANL\23-30-AAG

SERIES SMI-090 ALUM WINDOW WALL (L.M.I.)  
**Aldora Aluminum & Glass Products Inc.**  
4250 Coral Ridge Drive, Suite 101  
Coral Springs, FL 33065  
Tel. (954) 784-6900 Fax. (954) 784-6901

no	date	by	description

date:	07-03-23
scale:	1/2" = 1"
dr. by:	TARIQ
chk. by:	

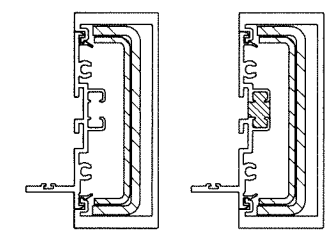
drawing no.  
**23-30F**  
sheet 9 of 19

DOOR MULLION LOAD CAPACITY - PSF				
NOMINAL DIMS.				WITH REINF.
FRAME HEIGHT INCHES	DOOR HEIGHT INCHES	WIDTH (W1) INCHES	WIDTH (W2) INCHES	EXT. (+) INT. (-)
108	80	60	30	90.0
			33	90.0
			39	90.0
			42	90.0
		72	30	90.0
			33	90.0
			39	90.0
			42	90.0
		84	30	90.0
			33	90.0
			39	90.0
			42	89.1
96	30	90.0		
	33	87.9		
	39	83.6		
	42	81.6		
114	80	60	30	80.0
			33	80.0
			39	80.0
			42	80.0
		72	30	80.0
			33	80.0
			39	80.0
			42	80.0
		84	30	80.0
			33	80.0
			39	80.0
			42	78.0
96	30	78.6		
	33	76.7		
	39	73.1		
	42	73.1		
120	80	60	30	80.0
			33	80.0
			39	80.0
			42	80.0
		72	30	80.0
			33	80.0
			39	78.4
			42	76.3
		84	30	76.7
			33	74.7
			39	70.9
			42	69.1
96	30	69.5		
	33	67.8		
	39	67.8		
	42	67.8		

DOOR MULLION LOAD CAPACITY - PSF				
NOMINAL DIMS.				WITH REINF.
FRAME HEIGHT INCHES	DOOR HEIGHT INCHES	WIDTH (W1) INCHES	WIDTH (W2) INCHES	EXT. (+) INT. (-)
108	84	60	30	90.0
			33	90.0
			39	90.0
			42	90.0
		72	30	90.0
			33	90.0
			39	90.0
			42	90.0
		84	30	90.0
			33	90.0
			39	90.0
			42	90.0
96	30	90.0		
	33	90.0		
	39	86.2		
	42	84.1		
114	84	60	30	80.0
			33	80.0
			39	80.0
			42	80.0
		72	30	80.0
			33	80.0
			39	80.0
			42	80.0
		84	30	80.0
			33	80.0
			39	80.0
			42	79.7
96	30	80.0		
	33	78.6		
	39	74.8		
	42	74.8		
120	84	60	30	80.0
			33	80.0
			39	80.0
			42	80.0
		72	30	80.0
			33	80.0
			39	79.7
			42	77.5
		84	30	78.2
			33	76.1
			39	72.1
			42	70.3
96	30	70.9		
	33	69.1		
	39	69.1		
	42	69.1		

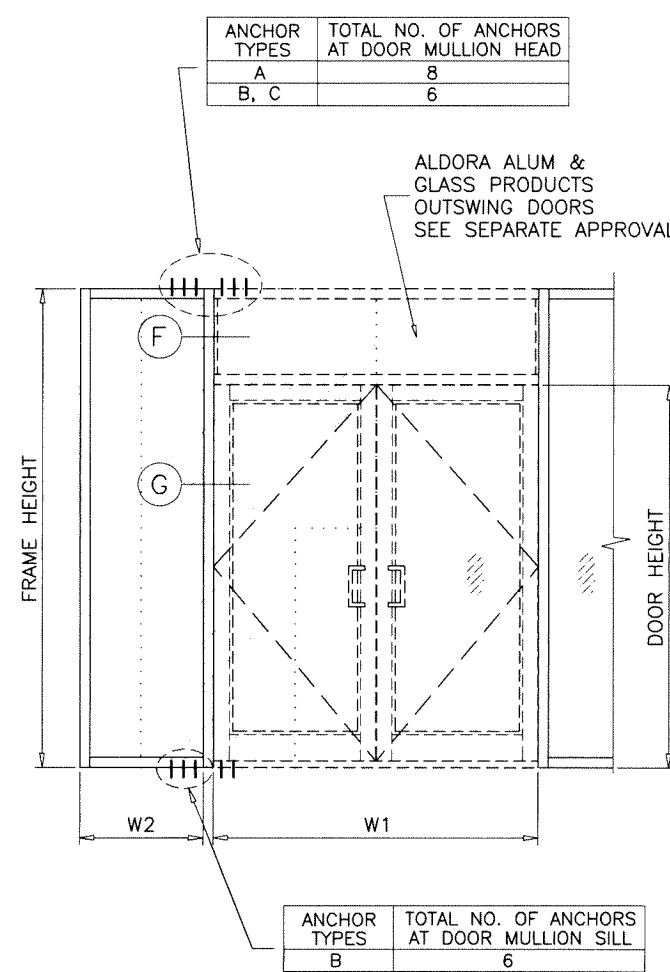
DOOR MULLION LOAD CAPACITY - PSF				
NOMINAL DIMS.				WITH REINF.
FRAME HEIGHT INCHES	DOOR HEIGHT INCHES	WIDTH (W1) INCHES	WIDTH (W2) INCHES	EXT. (+) INT. (-)
114	96	60	30	80.0
			33	80.0
			39	80.0
			42	80.0
		72	30	80.0
			33	80.0
			39	80.0
			42	80.0
		84	30	80.0
			33	80.0
			39	80.0
			42	80.0
96	30	80.0		
	33	80.0		
	39	80.0		
	42	80.0		
120	96	60	30	80.0
			33	80.0
			39	80.0
			42	80.0
		72	30	80.0
			33	80.0
			39	80.0
			42	80.0
		84	30	80.0
			33	80.0
			39	77.8
			42	75.7
96	30	77.2		
	33	75.1		
	39	75.1		
	42	75.1		

DOOR MULLION LOAD CAPACITY - PSF				
NOMINAL DIMS.				WITH REINF.
FRAME HEIGHT INCHES	DOOR HEIGHT INCHES	WIDTH (W1) INCHES	WIDTH (W2) INCHES	EXT. (+) INT. (-)
120	108	60	30	80.0
			33	80.0
			39	80.0
			42	80.0
		72	30	80.0
			33	80.0
			39	80.0
			42	80.0
		84	30	80.0
			33	80.0
			39	80.0
			42	80.0
96	30	80.0		
	33	80.0		
	39	80.0		
	42	80.0		



**DOOR MULLION WITH REINFORCING**

	Ix IN <sup>4</sup>	Sx IN <sup>3</sup>
ALUMINUM	5.856	2.602
STEEL	2.740	1.391
TOTAL Ix ALUM + Ix STL X 2.9	13.802	



Sealed: 8/21/2025

DOOR MULLION



FL #19973

**AL-FAROOQ CORPORATION**  
 ENGINEERS & PRODUCT DEVELOPMENT  
 9360 SUNSET DRIVE, SUITE 220  
 MIAMI, FLORIDA 33173 (C.A.N. 3538)  
 TEL. (305) 264-8100 FAX. (305) 262-6978  
 COMP-ANL\23-30-AAG

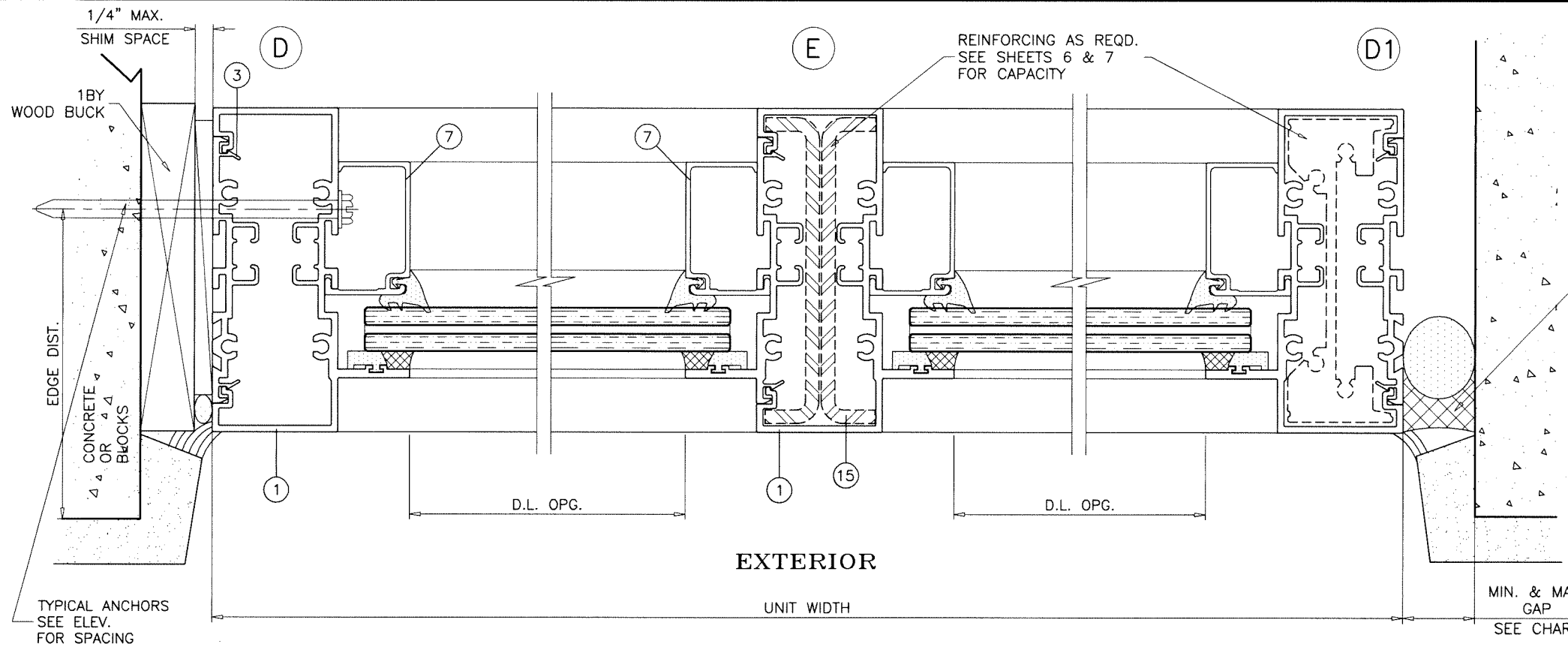
SERIES SMI-090 ALUM WINDOW WALL (L.M.I.)  
**Aldora Aluminum & Glass Products Inc.**  
 4250 Coral Ridge Drive, Suite 101  
 Coral Springs, FL 33065  
 Tel. (954) 784-6900 Fax. (954) 784-6901

no	date	description

date: 07-03-23  
 scale: 1/2" = 1"  
 dr. by: TARIQ  
 chk. by:   
 drawing no. 23-30F  
 sheet 10 of 19



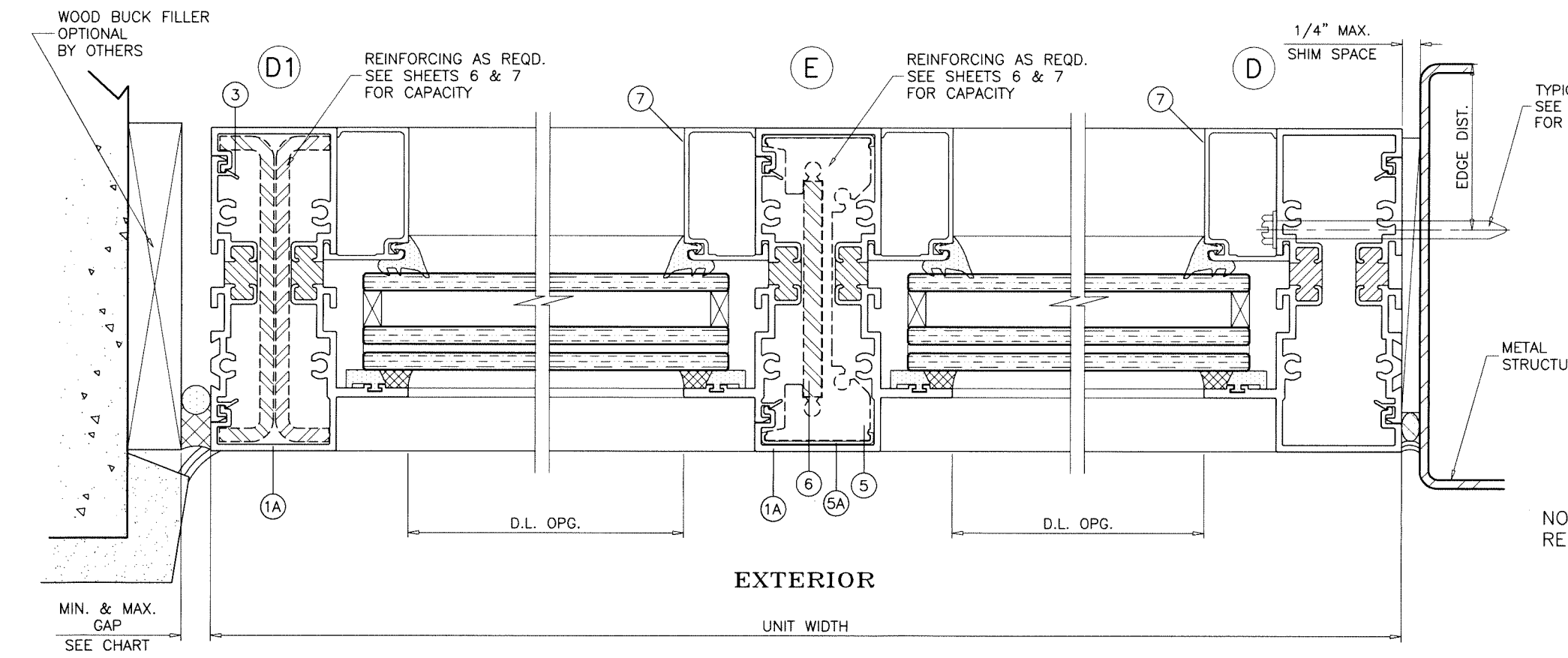




SILICONE  
DOWSIL CCS  
DEPTH = 3/8" MIN.

MAX. FRAME HEIGHT	GAP	
	MIN.	MAX.
72"	3/8"	1/2"
96"	1/2"	3/4"
120"	5/8"	1"

MIN. & MAX.  
GAP  
SEE CHART



NOTE:  
REINFORCINGS NOT REQUIRED AT SECURED JAMBS

Sealed: 8/21/2025



INTERIOR OR EXTERIOR GLAZED

FL #19973

**af c**  
**AL-FAROOQ CORPORATION**  
 ENGINEERS & PRODUCT DEVELOPMENT  
 9360 SUNSET DRIVE, SUITE 220 (C.A.N. 3538)  
 MIAMI, FLORIDA 33173 FAX. (305) 262-6978  
 TEL. (305) 264-8100

SERIES SMI-090 ALUM WINDOW WALL (L.M.I.)  
**Aldora Aluminum & Glass Products Inc.**  
 4250 Coral Ridge Drive, Suite 101  
 Coral Springs, FL 33065  
 Tel. (954) 784-6900 Fax. (954) 784-6901

revisions:	no	date	by	description

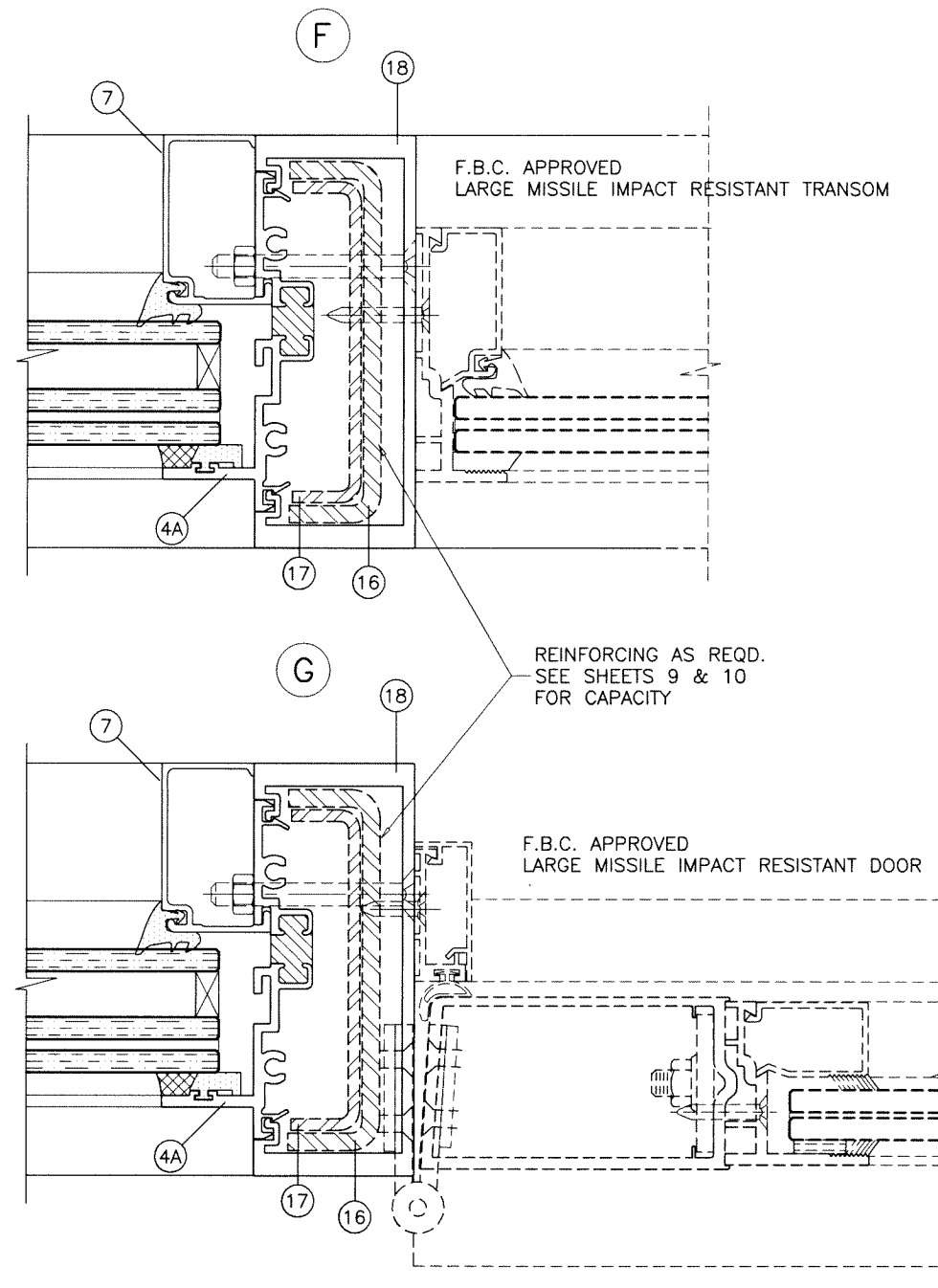
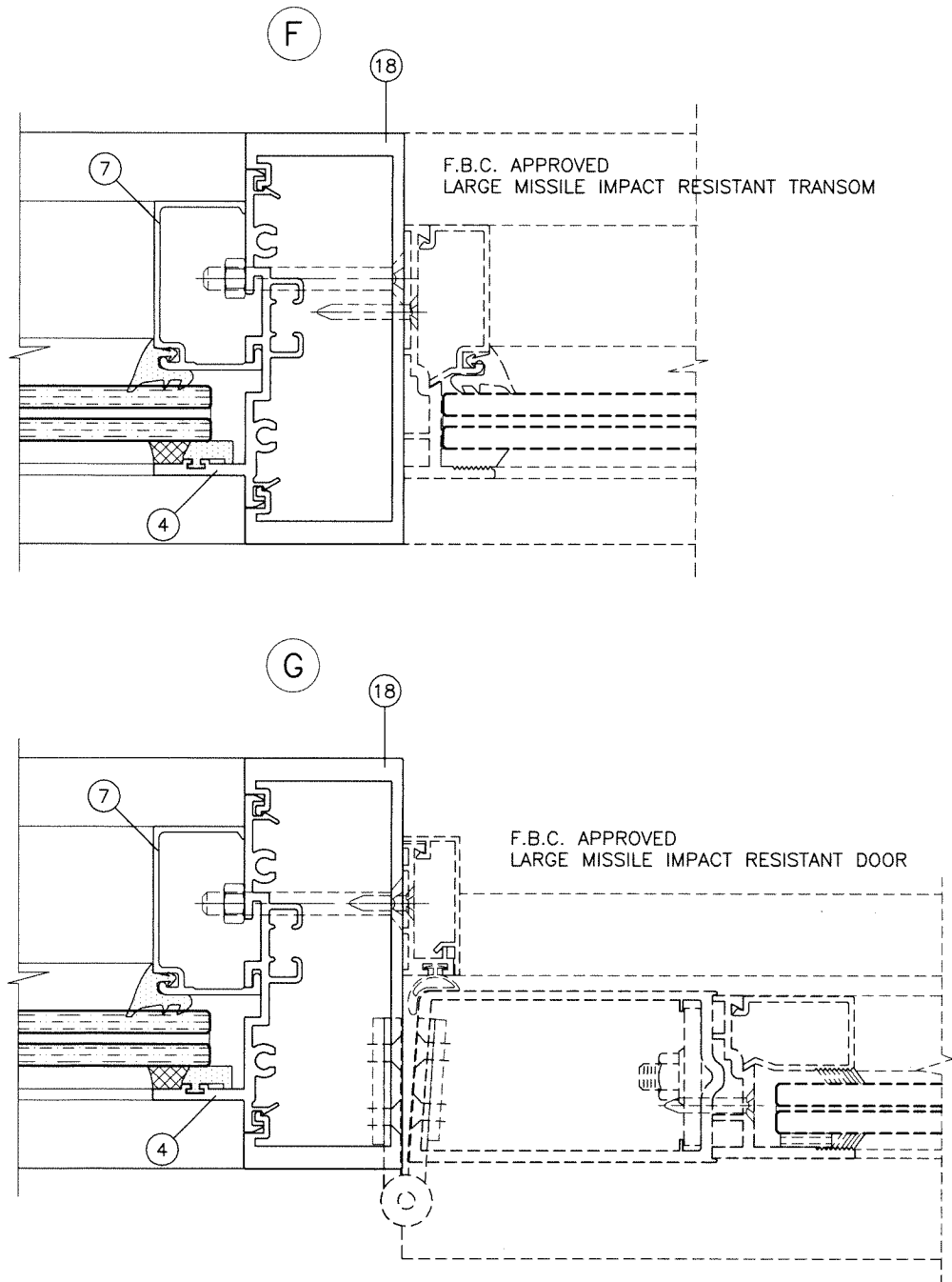
date: 07-03-23  
 scale: 1/2" = 1"  
 dr. by: TARIQ  
 chk. by:

drawing no.  
**23-30F**  
 sheet 13 of 19

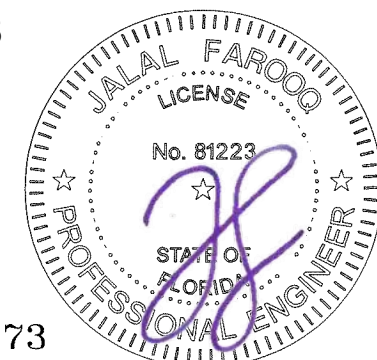
COMP-ANL 23-30-AAG

SEE SEPARATE APPROVAL FOR DESIGN LOAD CAPACITY OF DOORS AND DOOR ANCHORS.

LOWER VALUES FROM DOORS APPROVAL OR STOREFRONT SYSTEM CAPACITY CHARTS WILL APPLY TO ENTIRE SYSTEM.



Sealed: 8/21/2025



FL #19973

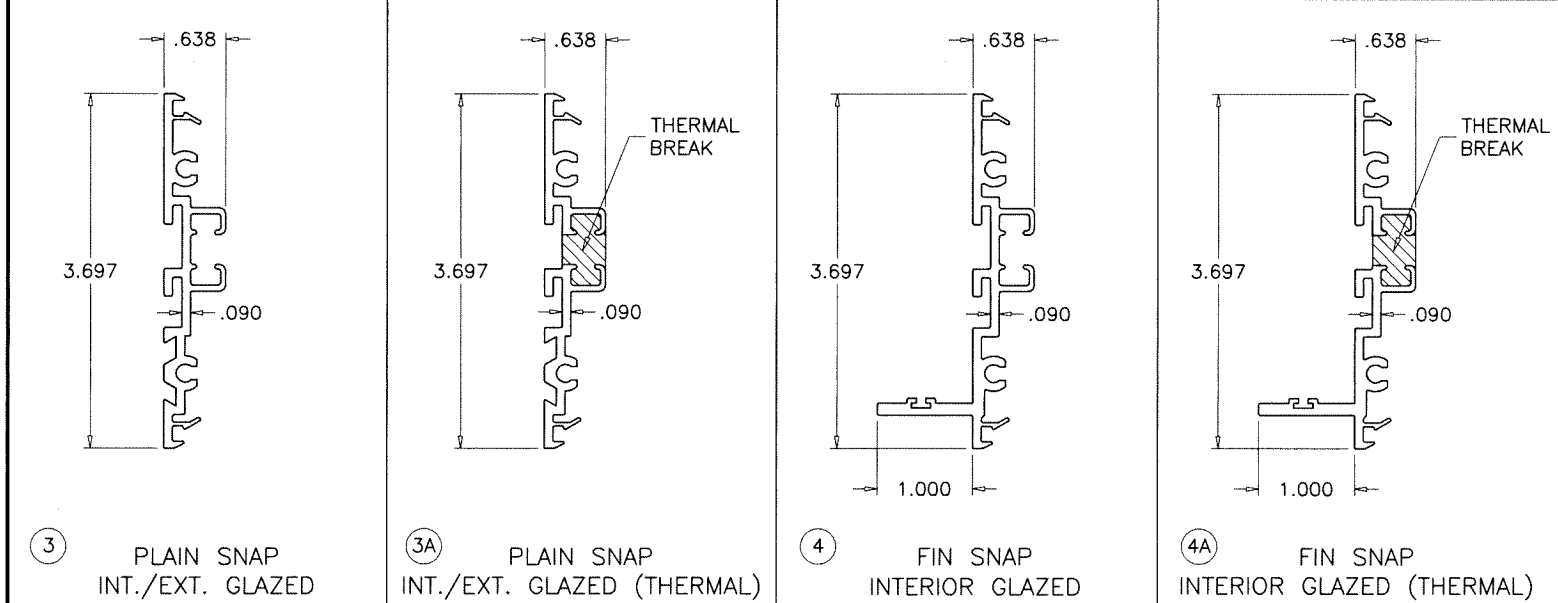
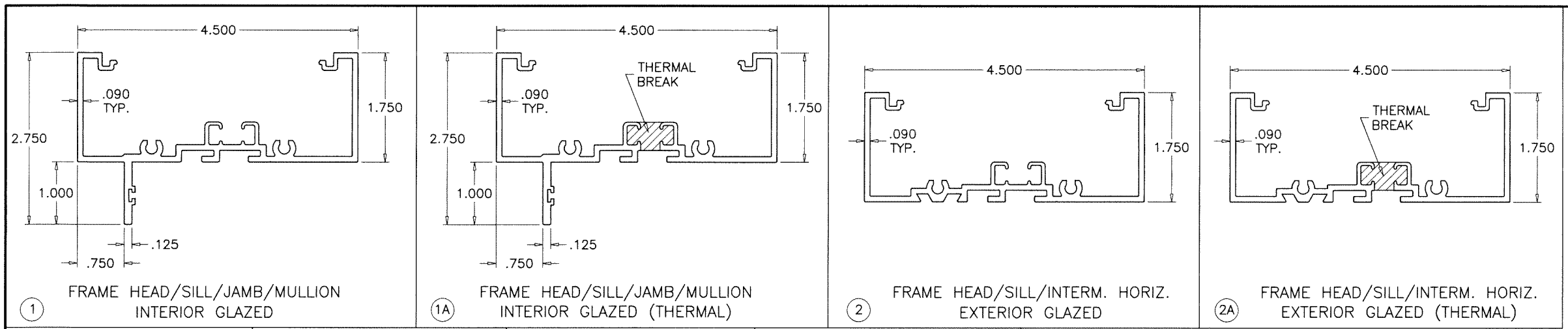
**af c**  
**AL-FAROOQ CORPORATION**  
 ENGINEERS & PRODUCT DEVELOPMENT  
 9360 SUNSET DRIVE, SUITE 220 (C.A.N. 3538)  
 MIAMI, FLORIDA 33173  
 TEL. (305) 264-8100 FAX. (305) 262-6978  
 COMP-ANL\23-30-AAG

SERIES SMI-090 ALUM WINDOW WALL (L.M.I.)  
**Aldora Aluminum & Glass Products Inc.**  
 4250 Coral Ridge Drive, Suite 101  
 Coral Springs, FL 33065  
 Tel. (954) 784-6900 Fax. (954) 784-6901

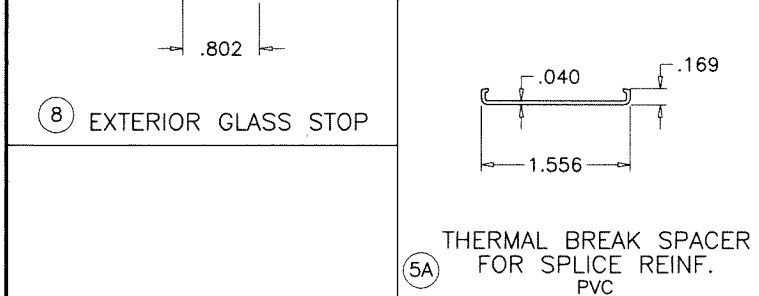
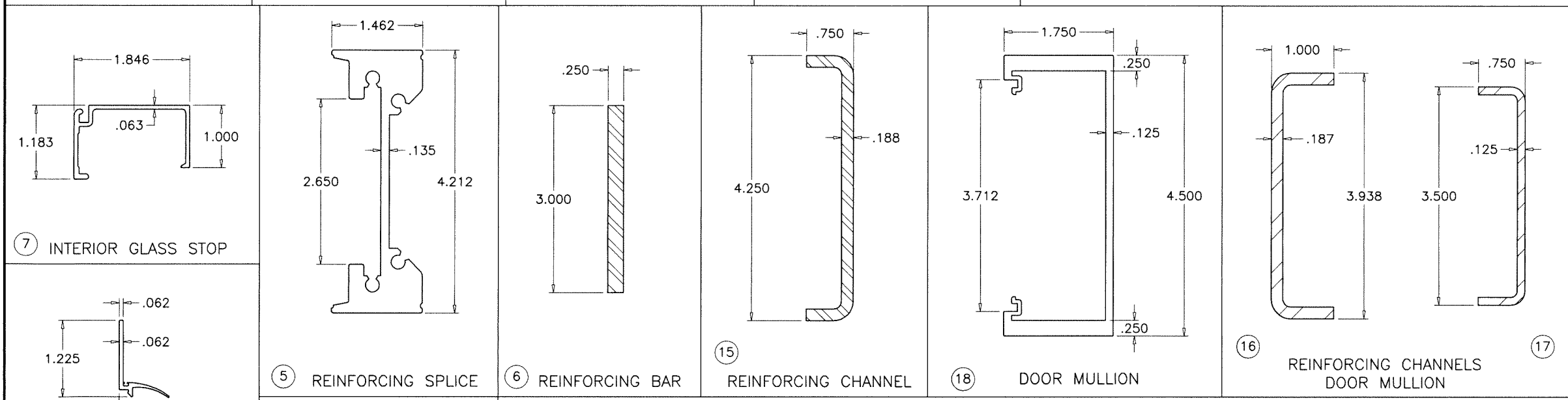
revisions:	
no	date by description

date: 07-03-23  
 scale: 1/2" = 1"  
 dr. by: TARIQ  
 chk. by:

drawing no.  
**23-30F**  
 sheet 14 of 19



THERMAL BREAK:  
 FRAME MEMBERS FILLED AND DEBRIDGED USING  
 'AZON SU312-19T' STRUCTURAL THERMAL BARRIER POLYMER  
 MANUFACTURED BY 'AZON USA INC.'



Sealed: 8/21/2025



**af c**  
**AL-FAROOQ CORPORATION**  
 ENGINEERS & PRODUCT DEVELOPMENT  
 9360 SUNSET DRIVE, SUITE 220  
 MIAMI, FLORIDA 33173 (C.A.N. 3538)  
 TEL. (305) 264-8100 FAX. (305) 262-6978  
 COMP-ANI\23-30-AAG

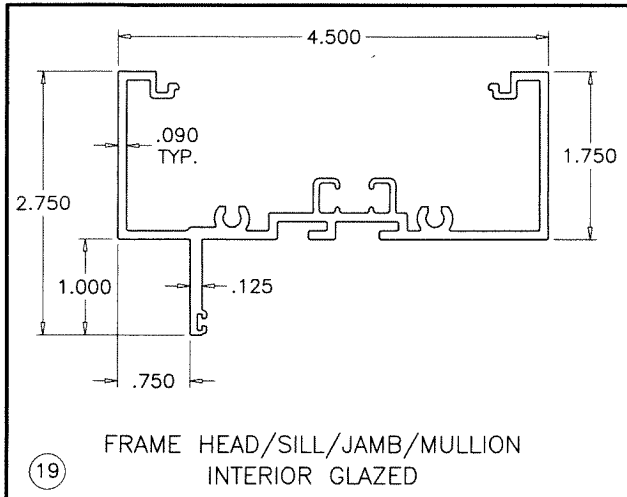
SERIES SMI-090 ALUM WINDOW WALL (L.M.I.)  
**Aldora Aluminum & Glass Products Inc.**  
 4250 Coral Ridge Drive, Suite 101  
 Coral Springs, FL 33065  
 Tel. (954) 784-6900 Fax. (954) 784-6901

no	date	by	description

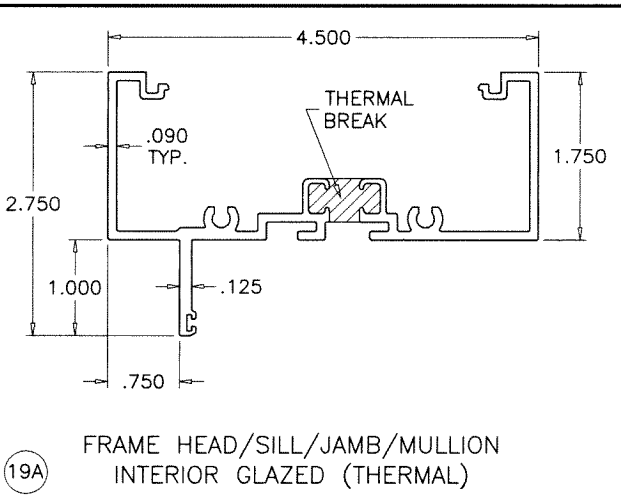
date: 07-03-23  
 scale: 1/2" = 1"  
 dr. by: TARIQ  
 chk. by:

drawing no.  
**23-30F**  
 sheet 15 of 19

FL #19973

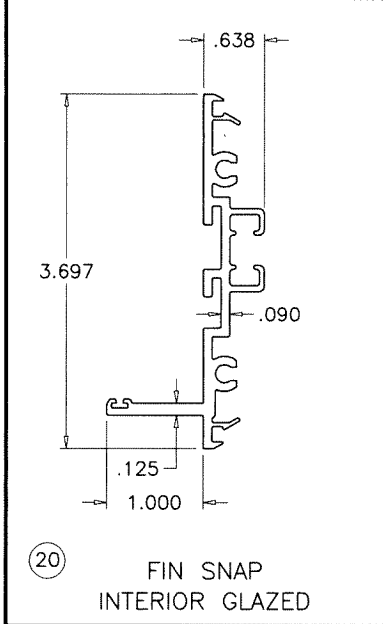


19 FRAME HEAD/SILL/JAMB/MULLION INTERIOR GLAZED

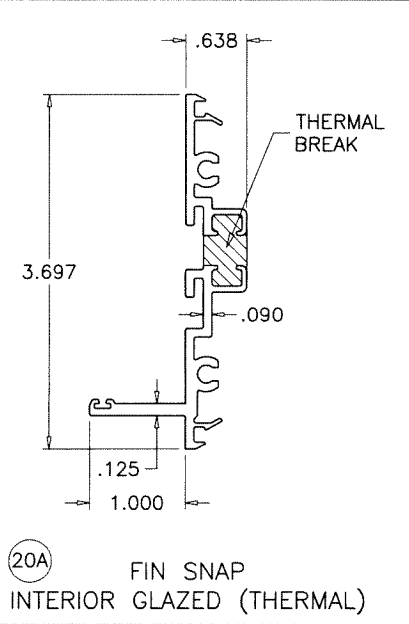


19A FRAME HEAD/SILL/JAMB/MULLION INTERIOR GLAZED (THERMAL)

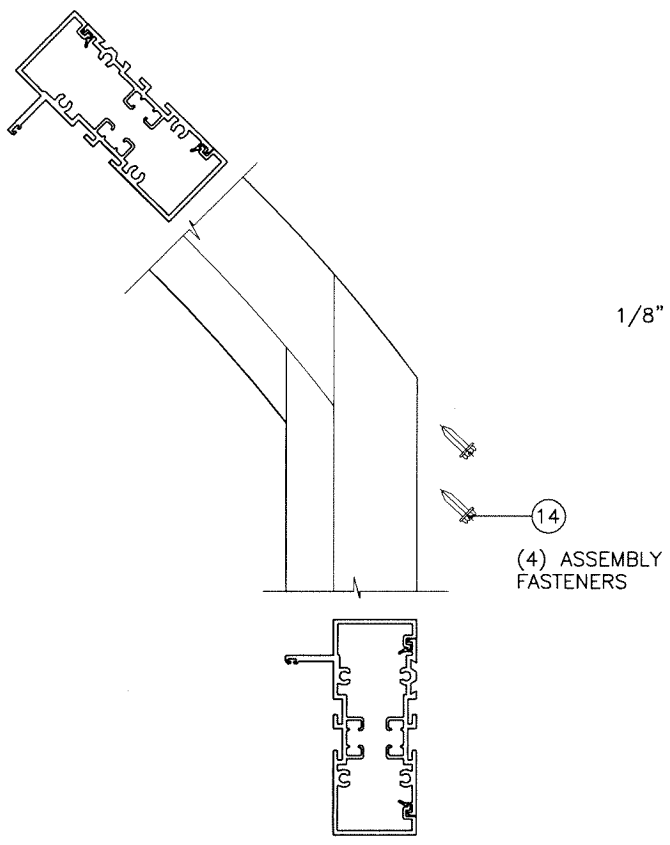
THERMAL BREAK:  
 FRAME MEMBERS FILLED AND DEBRIDGED USING  
 'AZON SU312-19T' STRUCTURAL THERMAL BARRIER POLYMER  
 MANUFACTURED BY 'AZON USA INC.'



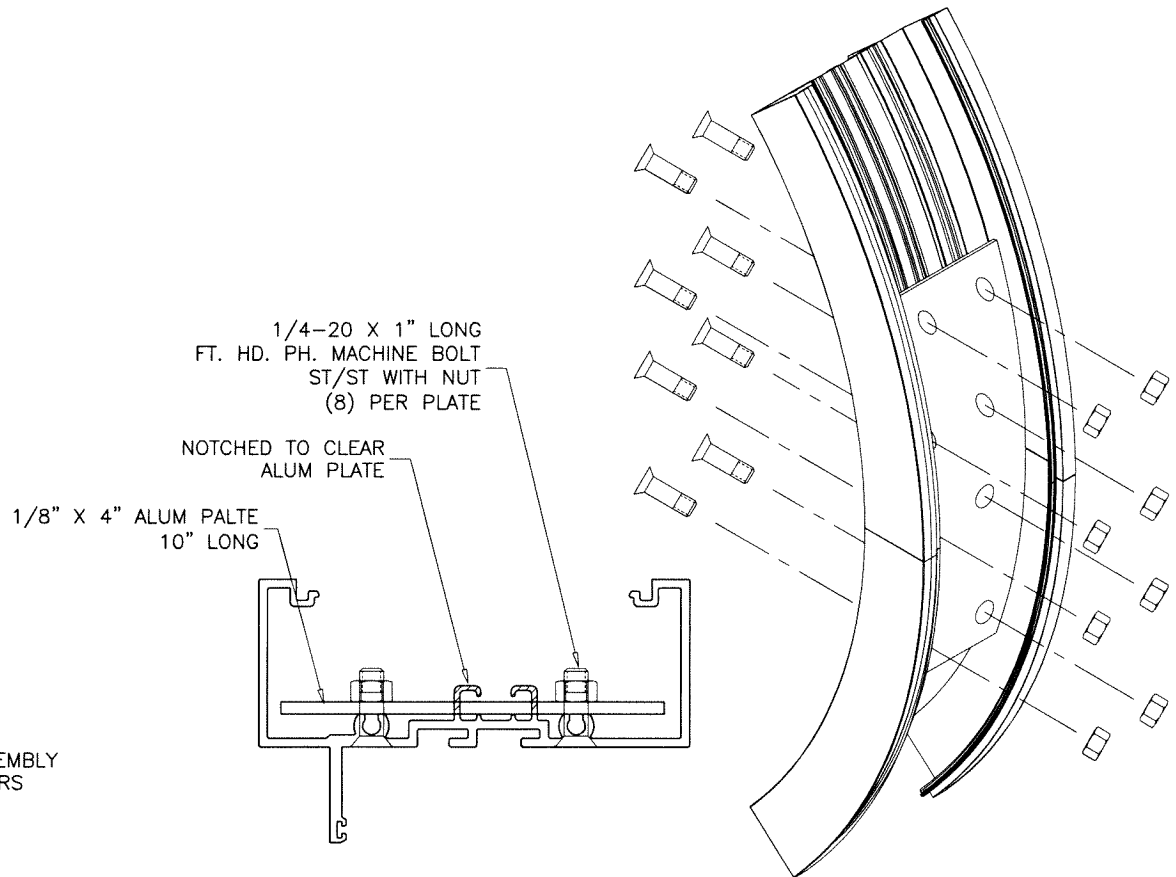
20 FIN SNAP INTERIOR GLAZED



20A FIN SNAP INTERIOR GLAZED (THERMAL)

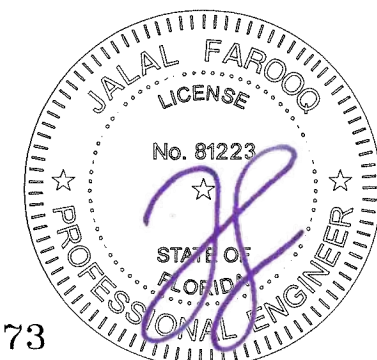


CORNER JOINT AT EYEBROW WINDOW



SPLICE JOINT AT HALF & FULL CIRCLE CORNERS

Sealed: 8/21/2025



FL #19973

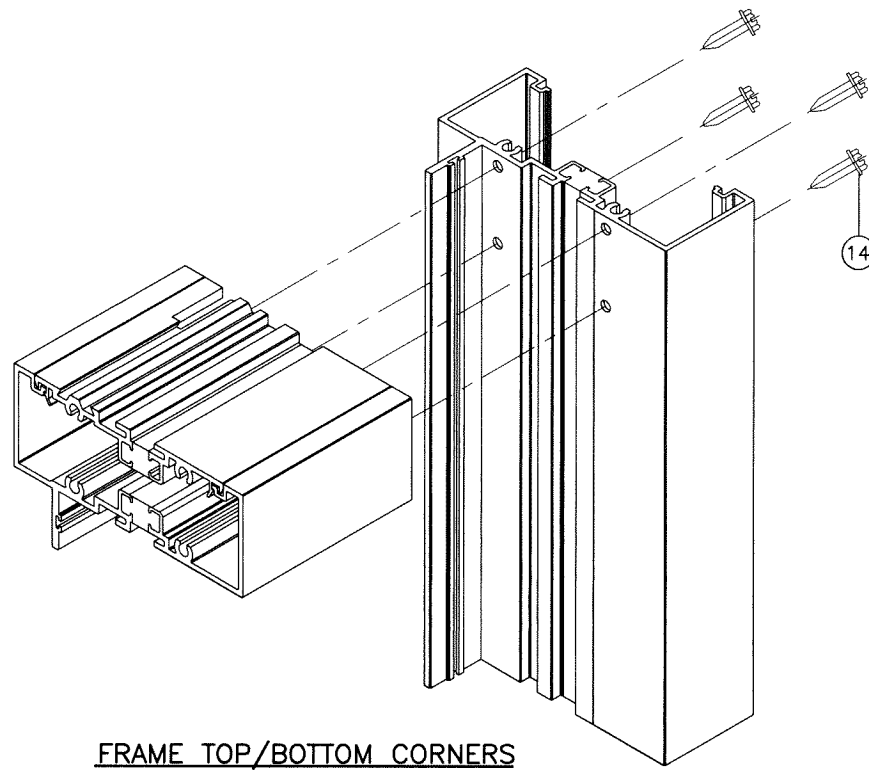
**af c**  
**AL-FAROOQ CORPORATION**  
 ENGINEERS & PRODUCT DEVELOPMENT  
 9360 SUNSET DRIVE, SUITE 220 (C.A.N. 3538)  
 MIAMI, FLORIDA 33173  
 TEL. (305) 264-8100 FAX. (305) 262-6978  
 COMP-ANL\23-30-AAG

SERIES SMI-090 ALUM WINDOW WALL (L.M.I.)  
**Aldora Aluminum & Glass Products Inc.**  
 4250 Coral Ridge Drive, Suite 101  
 Coral Springs, FL 33065  
 Tel. (954) 784-6900 Fax. (954) 784-6901

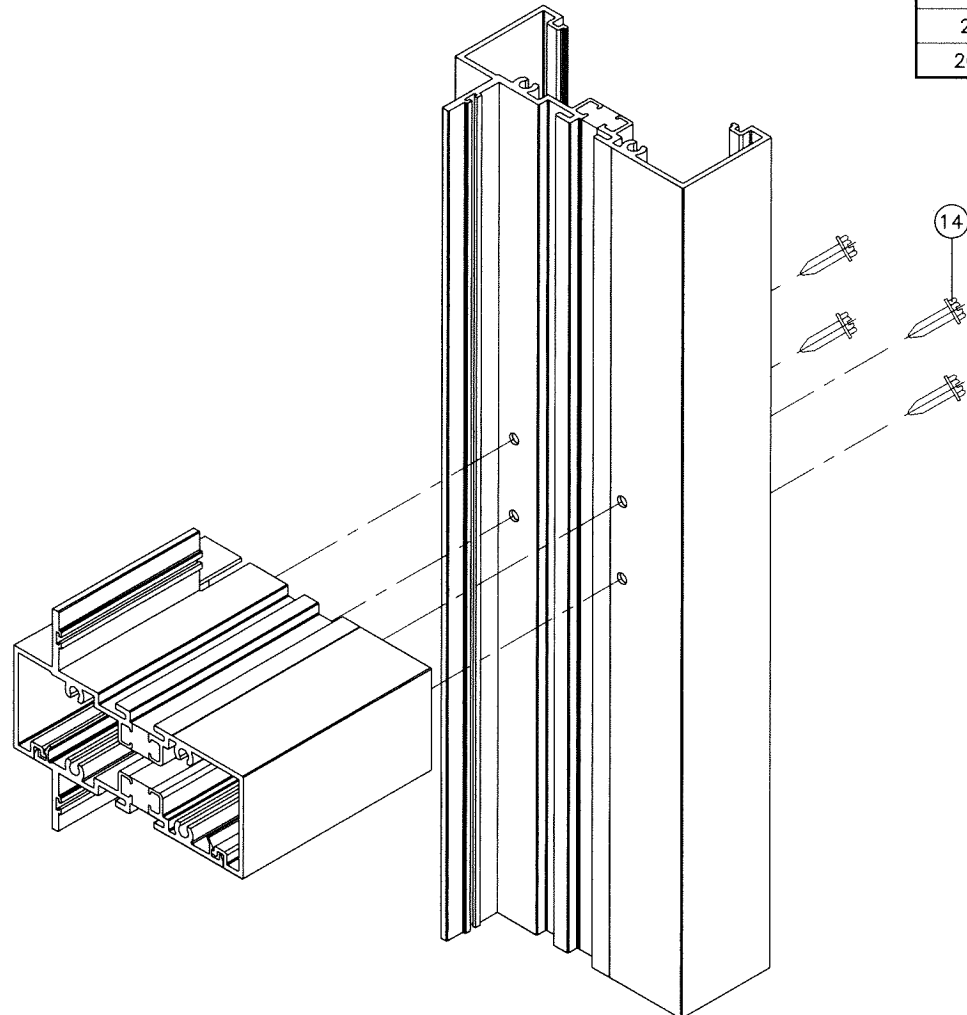
no	date	by	description

date: 07-03-23	scale: 1/2" = 1"	dr. by: TARIQ	chk. by:
----------------	------------------	---------------	----------

drawing no.  
**23-30F**  
 sheet 16 of 19



FRAME TOP/BOTTOM CORNERS



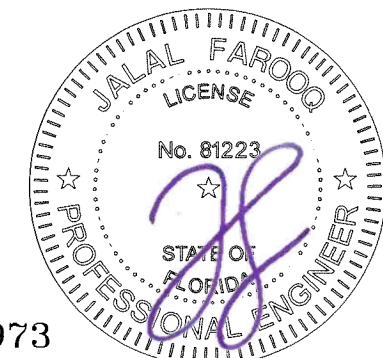
INTERMEDIATE HORIZONTAL CORNER

ITEM #	PART #	QUANTITY	DESCRIPTION	MATERIAL	MANF./SUPPLIER/REMARKS
1	SMI-091	AS REQD.	INT. GLAZED FRAME HEAD/SILL/JAMB/MULLION	6063-T6	-
1A	SMI-091T	AS REQD.	INT. GLAZED FRAME HEAD/SILL/JAMB/MULLION (POUR & DEBRIDGE)	6063-T6	-
2	SMI-098	AS REQD.	EXT. GLAZED FRAME HEAD/SILL/INTERM. HORIZ.	6063-T6	-
2A	SMI-098T	AS REQD.	EXT. GLAZED FRAME HEAD/SILL/INTERM. HORIZ. (POUR & DEBRIDGE)	6063-T6	-
3	SMI-094	AS REQD.	INT./EXT. GLAZED PLAIN SNAP	6063-T6	-
3A	SMI-094T	AS REQD.	INT./EXT. GLAZED PLAIN SNAP (POUR & DEBRIDGE)	6063-T6	-
4	SMI-093	AS REQD.	INT./EXT. GLAZED FIN SNAP	6063-T6	-
4A	SMI-093T	AS REQD.	INT./EXT. GLAZED FIN SNAP (POUR & DEBRIDGE)	6063-T6	-
5	SMI-095	AS REQD.	REINFORCING SPLICE	6005-T5	-
5A	SMI-P04	AS REQD.	THERMAL BRAKE SPACER FOR ALUM SPLICE	RIGID PVC	CENTRAL PLASTICS INC.
6	-	AS REQD.	REINFORCING BAR	STEEL	36 KSI MIN.
7	SMI-092	AS REQD.	INTERIOR GLASS STOP	6063-T6	-
8	SMI-097	AS REQD.	EXTERIOR GLASS STOP	6063-T6	-
9	SMI-G01	AS REQD.	INTERIOR GASKET (DUROMETER 70±5)	EPDM	GLAZING RUBBER PRODUCTS (#116)
10	SMI-G02	AS REQD.	SINGLE FACE TAPE (3/8" X 1/2")	VINYL FOAM	FRANK LOWE
11	SMI-G07	AS REQD.	EXTERIOR GASKET (DUROMETER 70±5)	EPDM	CENTRAL PLASTICS INC.
11A	SMI-G13	AS REQD.	SPACER / RETAINER OUTER GASKET	SANTOPRENE	MELTPPOINT PLASTICS INTERNATIONAL
12	SMI-SB06	2/ LITE	SETTING BLOCK LAM. GLASS (3/8" X 5/8" X 4" LG.) (DUROMETER 85±5)	EPDM	CENTRAL PLASTICS INC.
12A	SMI-SB04	2/ LITE	SETTING BLOCK LAM. INSUL. GLASS (3/8" X 1-1/4" X 4" LG.) (DUROMETER 85±5)	EPDM	CENTRAL PLASTICS INC.
14	#12 X 1-1/2"	4/ CORNER	FRAME ASSEMBLY SCREWS	ST. STEEL	HEX. HEAD MACHINE SCREWS
15	-	AS REQD.	REINFORCING CHANNEL (36 KSI MIN.)	STEEL	-
16	-	-	REINFORCING CHANNEL (DOOR MULLION)	STEEL	1" X 3-15/16" X 1" X 3/16" THK.
17	-	-	REINFORCING CHANNEL (DOOR MULLION)	STEEL	3/4" X 3-1/2" X 3/4" X 1/8" THK.
18	SMI-005	AS REQD.	DOOR MULLION	6063-T6	-
19	SMI-901	AS REQD.	INT. GLAZED FRAME HEAD/SILL/JAMB/MULLION	6063-T6	-
19A	SMI-901T	AS REQD.	INT. GLAZED FRAME HEAD/SILL/JAMB/MULLION (POUR & DEBRIDGE)	6063-T6	-
20	SMI-903	AS REQD.	INT. GLAZED FIN SNAP	6063-T6	-
20A	SMI-903T	AS REQD.	INT. GLAZED FIN SNAP (POUR & DEBRIDGE)	6063-T6	-

**SEALANTS:**

ALL FRAME CORNERS, JOINTS, MULLION SEAMS AND PERIMETER OF GLAZING BEAD TO FRAME SEALED WITH SILICONE SEALANT.

Sealed: 8/21/2025



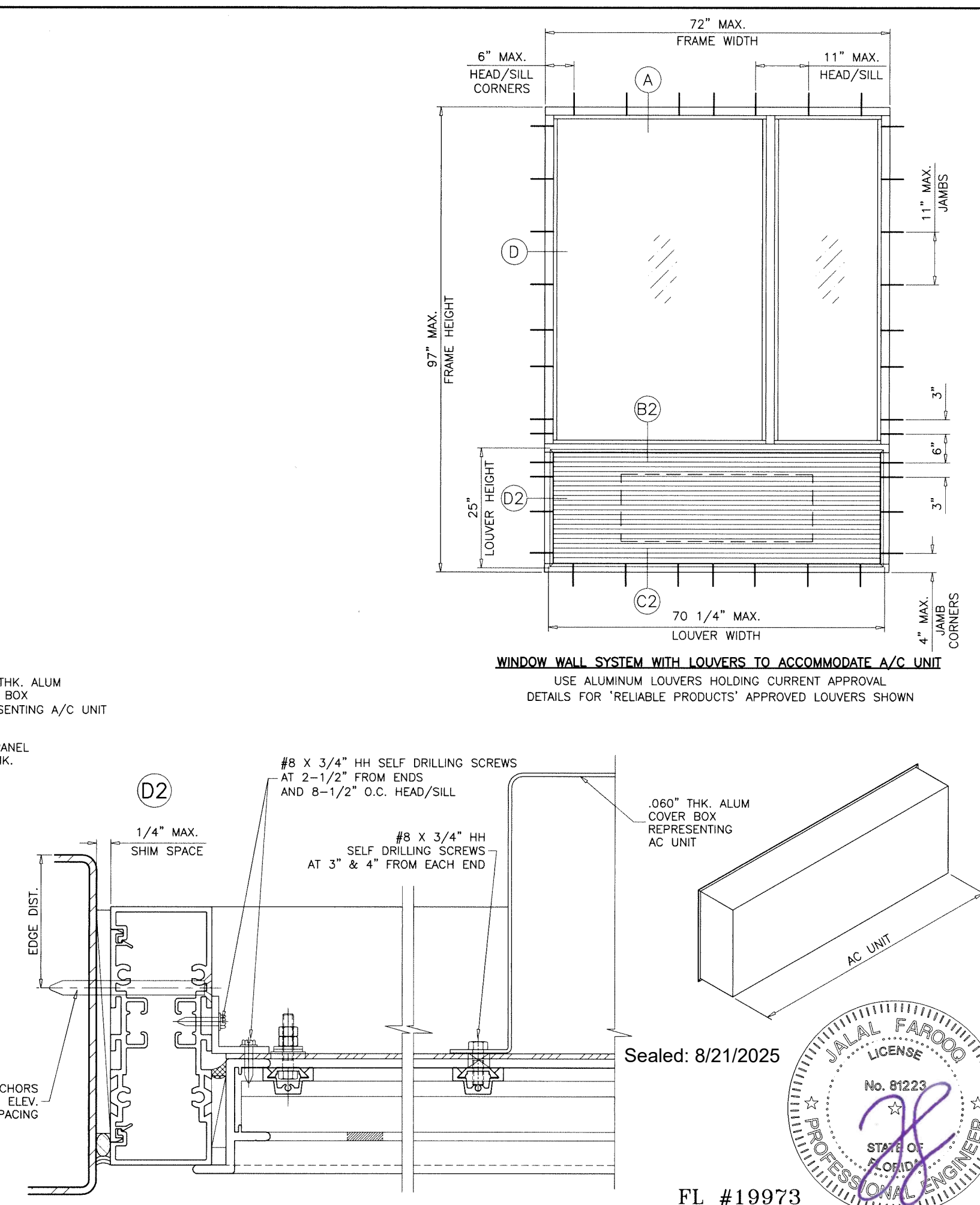
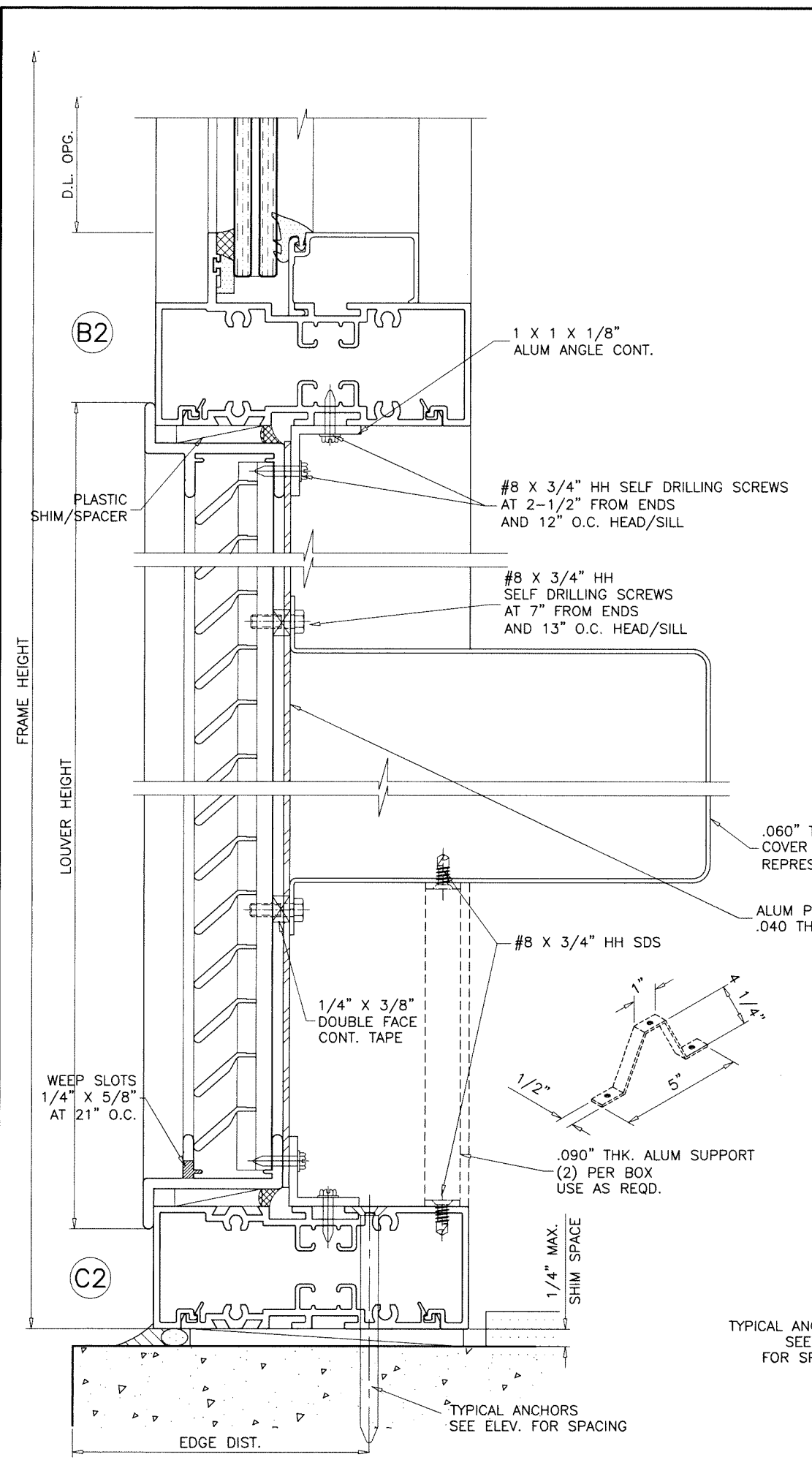
FL #19973

**a f c**  
**AL-FAROOQ CORPORATION**  
 ENGINEERS & PRODUCT DEVELOPMENT  
 9360 SUNSET DRIVE, SUITE 220  
 MIAMI, FLORIDA 33173 (C.A.N. 3538)  
 TEL. (305) 264-8100 FAX. (305) 262-6978  
 COMP-ANL\23-30-AAG

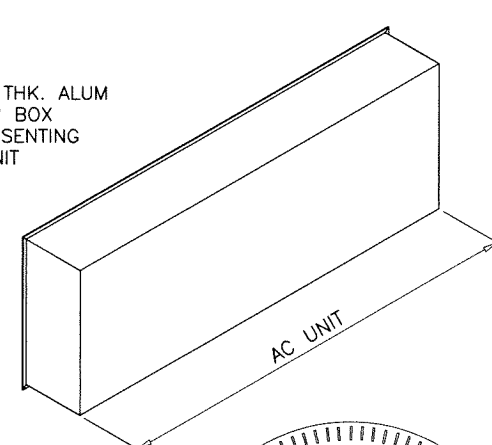
SERIES SMI-090 ALUM WINDOW WALL (L.M.I.)  
**Aldora Aluminum & Glass Products Inc.**  
 4250 Coral Ridge Drive, Suite 101  
 Coral Springs, FL 33065  
 Tel. (954) 784-6900 Fax. (954) 784-6901

revisions:	no	date	by	description
date:	07-03-23			
scale:	1/2" = 1"			
dr. by:	TARIQ			
chk. by:				
drawing no.	23-30F			
sheet	17 of 19			





**WINDOW WALL SYSTEM WITH LOUVERS TO ACCOMMODATE A/C UNIT**  
 USE ALUMINUM LOUVERS HOLDING CURRENT APPROVAL  
 DETAILS FOR 'RELIABLE PRODUCTS' APPROVED LOUVERS SHOWN



Sealed: 8/21/2025

FL #19973

**af c**  
**AL-FAROOQ CORPORATION**  
 ENGINEERS & PRODUCT DEVELOPMENT  
 9360 SUNSET DRIVE, SUITE 220 (C.A.N. 3538)  
 MIAMI, FLORIDA 33173  
 TEL. (305) 264-8100 FAX. (305) 262-6978  
 COMP-ANL\23-30-AAG

SERIES SMI-090 ALUM WINDOW WALL (L.M.I.)  
**Aldora Aluminum & Glass Products Inc.**  
 4250 Coral Ridge Drive, Suite 101  
 Coral Springs, FL 33065  
 Tel. (954) 784-6900 Fax. (954) 784-6901

no	date	by	description

date:	07-03-23
scale:	1/2" = 1"
dr. by:	TARIQ
chk. by:	

drawing no.  
**23-30F**  
 sheet 19 of 19