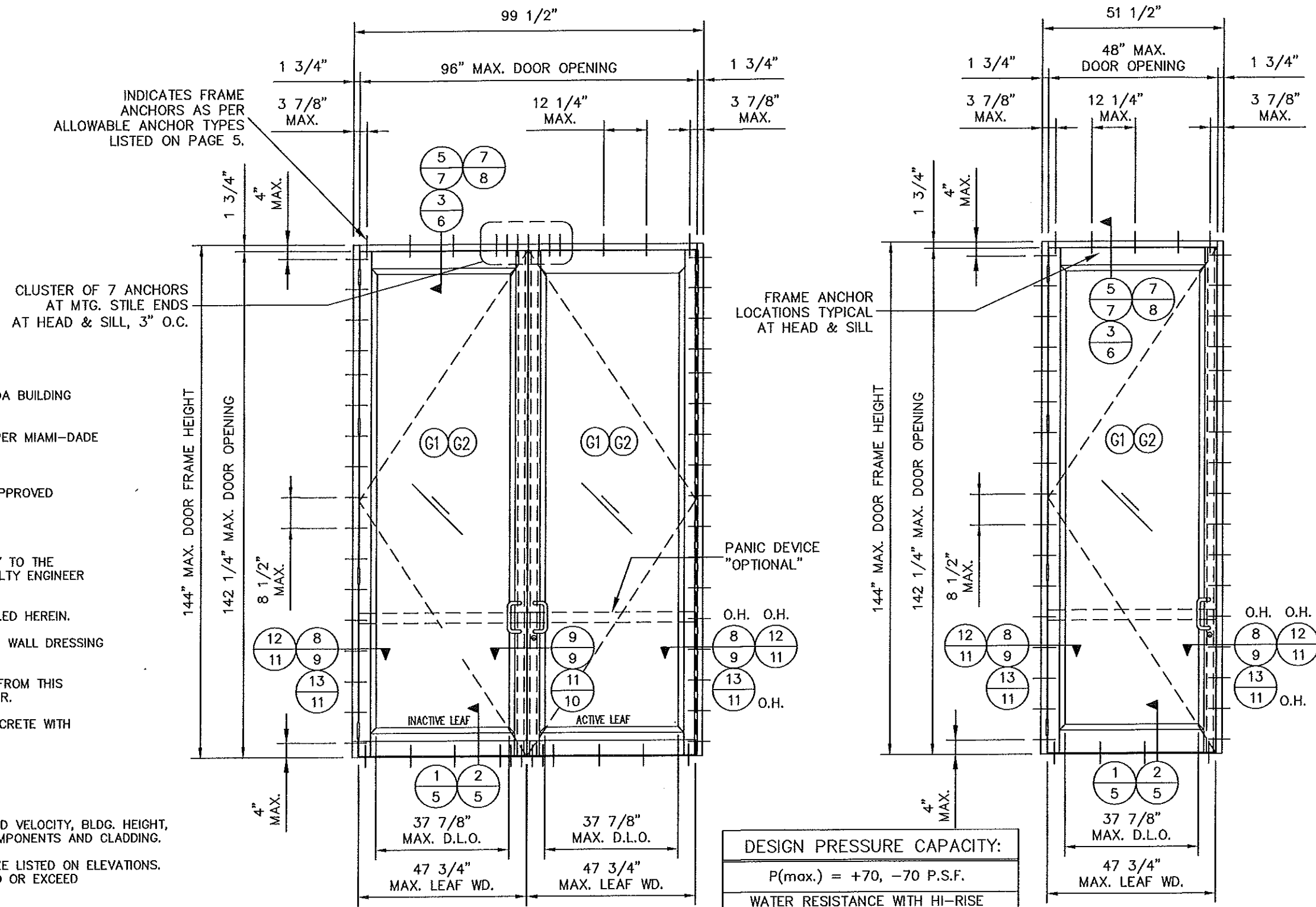


SERIES "SUMMIT + ALUMINUM OUT SWING DOORS



GENERAL NOTES:

1. THIS PRODUCT IS DESIGNED TO COMPLY WITH THE CURRENT FLORIDA BUILDING CODE (FBC 2017) 6th EDITION (HVHZ).
2. DOOR SYSTEM HAS BEEN TESTED FOR LARGE MISSILE IMPACT AS PER MIAMI-DADE COUNTY PROTOCOLS (TAS 201, 202 & 203) HURRICANE WIND-BORNE DEBRIS PROTECTION IS NOT REQUIRED.
3. THIS SYSTEM MAY BE USED IN CONJUNCTION WITH TESTED AND APPROVED STOREFRONT/WINDOW WALL SYSTEM.
4. CODE REQUIREMENTS FOR EGRESS MUST BE OBSERVED.
5. WOOD BUCKS ARE BY OTHERS AND MUST BE ANCHORED PROPERLY TO THE STRUCTURE. BUCKS AND BUCKING SHALL BE DESIGNED BY SPECIALTY ENGINEER OR E.O.R.
6. ANCHORS SHALL BE AS LISTED IN CHARTS AND SPACED AS DETAILED HEREIN.
7. FRAME ANCHOR EMBEDMENT TO BASE MATERIAL SHALL BE BEYOND WALL DRESSING OR STUCCO AS PER ANCHOR ANCHOR TYPE CHART ON PAGE 4.
8. ANY SUBSTRATES, BUCKING OR ANCHOR CONDITIONS WHICH VARY FROM THIS APPROVAL SHALL BE QUALIFIED BY A SPECIALTY ENGINEER OR E.O.R.
9. ALL ALUMINUM FRAMES SHALL BE ISOLATED FROM STEEL AND CONCRETE WITH HIGH STRENGTH STRUCTURAL PLASTIC SHIMS OR AS PER FBC.

INSTRUCTIONS:


- STEP 1 - DETERMINE DESIGN WIND LOAD REQUIREMENT BASED ON WIND VELOCITY, BLDG. HEIGHT, WIND ZONE USING APPLICABLE ASCE 7 STANDARDS FOR COMPONENTS AND CLADDING.
- STEP 2 - CHECK DESIGN PRESSURE CAPACITY FOR DESIRED DOOR SIZE LISTED ON ELEVATIONS. THE DESIGN PRESSURE ON THE DOOR SHOULD BE EQUAL TO OR EXCEED THE PROJECT DESIGN PRESSURE.
- STEP 3 - SELECT ANCHOR OPTION(S) BASED ON SUBSTRATES FROM "FRAME ANCHOR TYPES" ON PAGES 4.

DESIGN PRESSURE CAPACITY:
P(max.) = +70, -70 P.S.F.
WATER RESISTANCE WITH HI-RISE THRESHOLD 10.5 PSF
NO WATER RESISTANCE WITH D. HANDICAP THRESHOLD

TYPICAL ELEVATION

TYPICAL ELEVATION

PRODUCT NAME: SUMMIT+ ALUMINUM OUTSWING DOOR SYSTEM - LMI		
DRAWING NUMBER: SUMMIT+OS.LMI	DRAW BY: M.G.	PRODUCT APPROVAL NO.: FL27984.1
SHT. 1 OF 16	SCALE: 3/8"=1'-0"	DATE: 08/17/18


ALDORA
 ALUMINUM AND GLASS PRODUCTS, INC.
 11500 MIRAMAR PKWY. SUITE 300 MIRAMAR, FL. 33025
 PHONE: (954) 784-6900 FAX: (954) 784-6901

SEAL
 LICENSED PROFESSIONAL ENGINEER
 No 43904
 AUG 17 2018
 STATE OF FLORIDA
 WILLIAM D. COOK P.E.
 #43904, FLA S.I. #2008

BROMLEY•COOK ENGINEERING, INC.
 STRUCTURAL ENGINEERING SERVICES
 5440 N.W. 33RD AVENUE SUITE 100
 FORT LAUDERDALE, FLORIDA 33309
 TEL: (954) 772-4624 FAX: (954) 772-4634
 CERT. OF AUTH. #00009124

REFER TO SEPARATE PRODUCT APPROVAL FOR DOOR MULLION ANCHOR LOCATIONS

INDICATES FRAME ANCHORS AS PER ALLOWABLE ANCHOR TYPES LISTED ON PAGE 4.

FRAME ANCHOR LOCATIONS TYPICAL AT HEAD & SILL.

CLUSTER OF 3 ANCHORS AT VERT. MULLIONS AT HEAD & SILL @ 3" O.C.

CLUSTER OF 4 ANCHORS AT VERT. MULLIONS AT HEAD & SILL @ 3" O.C.

CLUSTER OF 7 ANCHORS AT MTG. STILE ENDS AT HEAD & SILL, 3" O.C.

PANIC DEVICE "OPTIONAL"

PANIC DEVICE "OPTIONAL"

ALDORA ALUMINUM & GLASS PRODUCTS ALUMINUM STOREFRONT/ WINDOW WALL SYSTEM AS PER SEPARATE PRODUCT APPROVAL


ALDORA ALUMINUM & GLASS PRODUCTS ALUMINUM STOREFRONT/ WINDOW WALL SYSTEM AS PER SEPARATE PRODUCT APPROVAL

DESIGN PRESSURE CAPACITY:
 P(max.) = +70, -70 P.S.F.
 WATER RESISTANCE WITH HI-RISE THRESHOLD 10.5 PSF
 NO WATER RESISTANCE WITH HANDICAP THRESHOLD

TYPICAL ELEVATION

TYPICAL ELEVATION

PRODUCT NAME: SUMMIT+ ALUMINUM OUTSWING DOOR SYSTEM - LMI		
DRAWING NUMBER: SUMMIT+OS.LMI	DRAW BY: M.G.	PRODUCT APPROVAL NO.: FL27984.1
SHT. 2 OF 16	SCALE: 3/8"=1'-0"	DATE: 08/17/18


ALDORA
 ALUMINUM AND GLASS PRODUCTS, INC.
 11500 MIRAMAR PKWY. SUITE 300 MIRAMAR, FL. 33025
 PHONE: (954) 784-6900 FAX: (954) 784-6901

WILLIAM D. COOK
 LICENSE
 No 43904
 AUG 17 2018
 STATE OF FLORIDA
 PROFESSIONAL ENGINEER
 WILLIAM D. COOK P.E.
 FLA P.E. #43904, FLA S.I. #2008

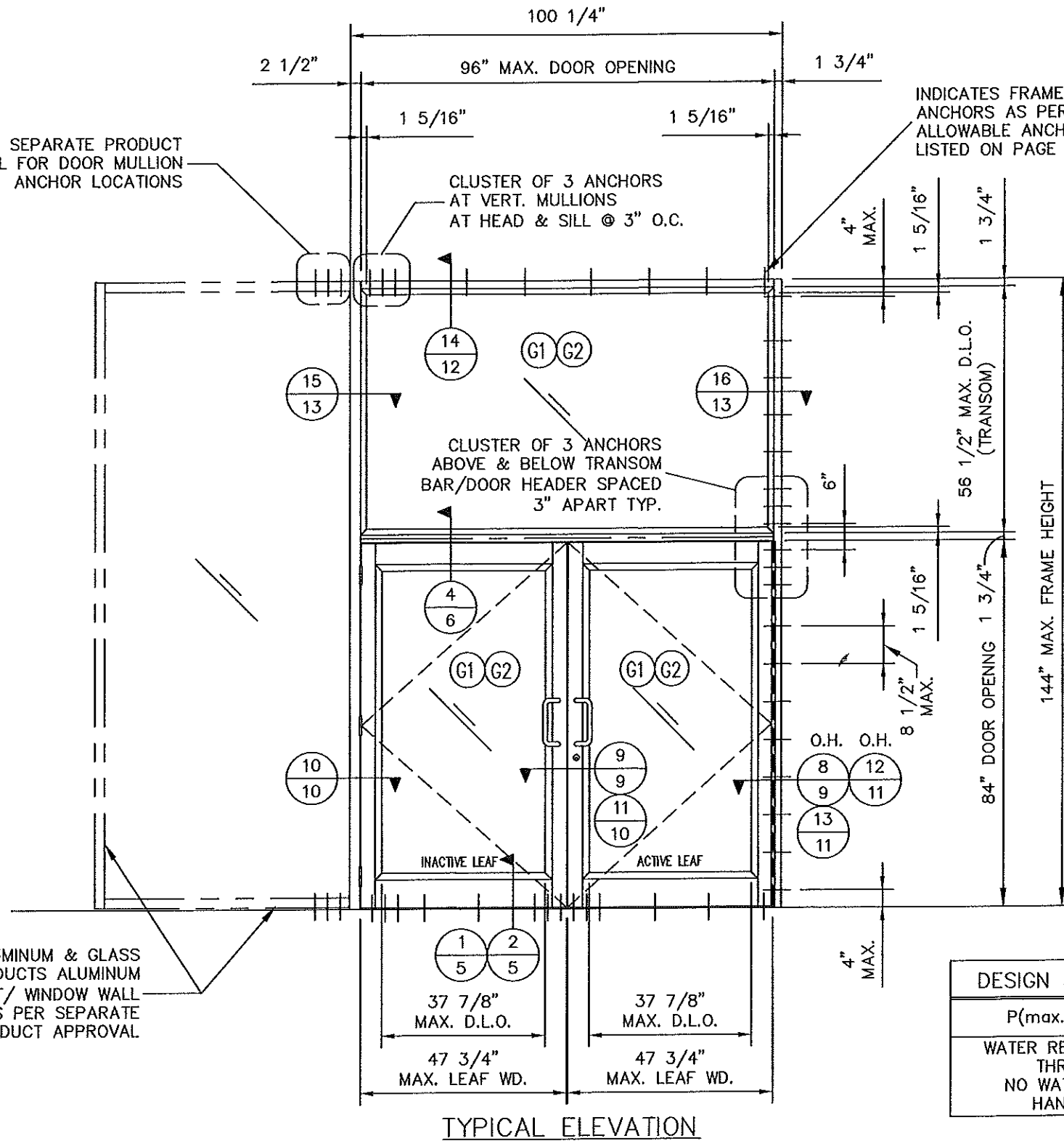
BROMLEY-COOK ENGINEERING, INC.
 STRUCTURAL ENGINEERING SERVICES
 5440 N.W. 33RD AVENUE SUITE 100
 FORT LAUDERDALE, FLORIDA 33309
 TEL: (954) 772-4624 FAX: (954) 772-4634
 CERT. OF AUTH. #00009124

REFER TO SEPARATE PRODUCT APPROVAL FOR DOOR MULLION ANCHOR LOCATIONS

ALDORA ALUMINUM & GLASS PRODUCTS ALUMINUM STOREFRONT/ WINDOW WALL SYSTEM AS PER SEPARATE PRODUCT APPROVAL

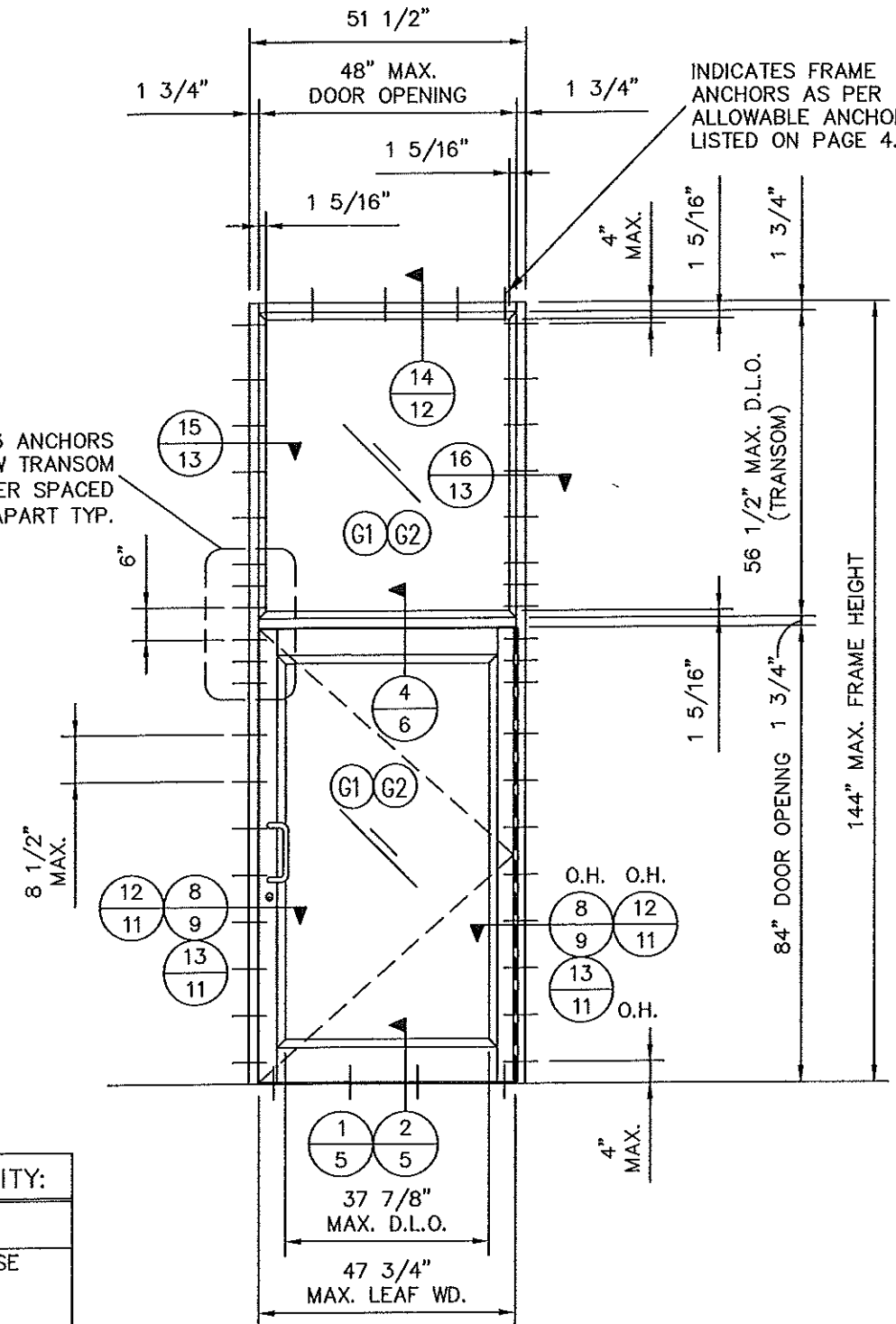
INDICATES FRAME ANCHORS AS PER ALLOWABLE ANCHOR TYPES LISTED ON PAGE 4.

INDICATES FRAME ANCHORS AS PER ALLOWABLE ANCHOR TYPES LISTED ON PAGE 4.



TYPICAL ELEVATION


CLUSTER OF 3 ANCHORS ABOVE & BELOW TRANSOM BAR/DOOR HEADER SPACED 3" APART TYP.



TYPICAL ELEVATION

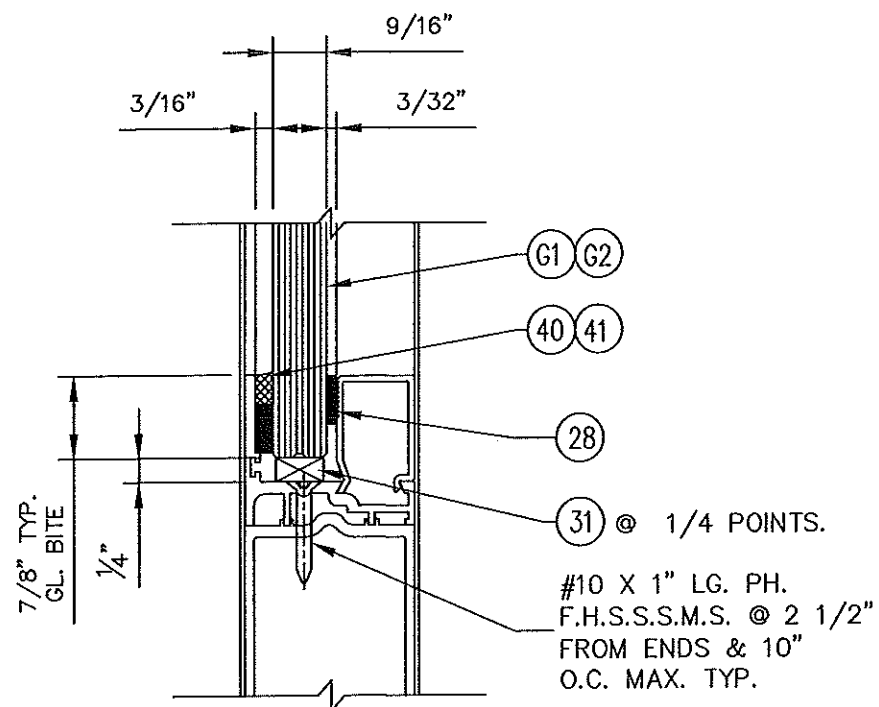
DESIGN PRESSURE CAPACITY:
P(max.) = +80, -80 P.S.F.
WATER RESISTANCE WITH HI-RISE THRESHOLD 10.5 PSF NO WATER RESISTANCE WITH HANDICAP THRESHOLD

PRODUCT NAME: SUMMIT+ ALUMINUM OUTSWING DOOR SYSTEM - LMI		
DRAWING NUMBER: SUMMIT+OS.LMI	DRAW BY: M.G.	PRODUCT APPROVAL NO.: FL27984.1
SHT. 3 of 16	SCALE: 3/8"=1'-0"	DATE: 08/17/18


ALDORA
 ALUMINUM AND GLASS PRODUCTS, INC.
 11500 MIRAMAR PKWY. SUITE 300 MIRAMAR, FL. 33025
 PHONE: (954) 784-6900 FAX: (954) 784-6901

SEAL
 WILLIAM D. COOK
 LICENSE
 No 43904
 STATE OF FLORIDA
 AUG 17 2018
 PROFESSIONAL ENGINEER
 WILLIAM D. COOK P.E.
 FLA P.E. #43904, FLA S.I. #2008

BROMLEY-COOK ENGINEERING, INC.
 STRUCTURAL ENGINEERING SERVICES
 5440 N.W. 33RD AVENUE SUITE 100
 FORT LAUDERDALE, FLORIDA 33309
 TEL: (954) 772-4624 FAX: (954) 772-4634
 CERT. OF AUTH. #00009124




A GLAZING DETAIL
4 AT BOTTOM RAIL
(TOP RAIL & VERTICAL STILES
SIMILAR)

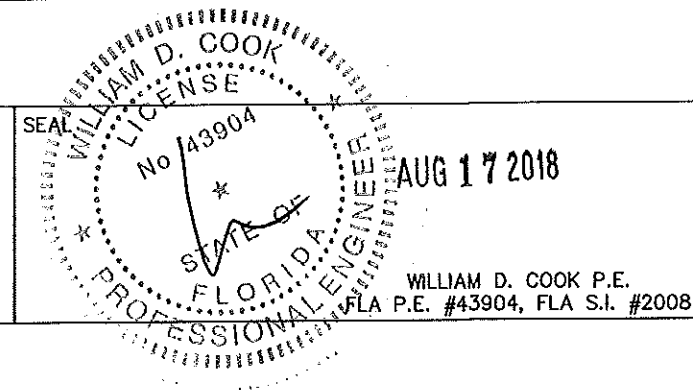
GLASS TYPES		
MARK	TYPE	MAKE UP/DESCRIPTION
G1	9/16" LAMINATED	1/4" HEAT STRENGTHENED - .090" SENTRYGLAS PLUS INTERLAYER - 1/4" HEAT STRENGTHENED SENTRYGLAS PLUS INTERLAYER BY "KURARAY AMERICA, INC."
G2	9/16" LAMINATED	1/4" HEAT STRENGTHENED - .077" VANCEVA STORM INTERLAYER W/PET CORE - 1/4" HEAT STRENGTHENED VANCEVA STORM INTERLAYER BY "EASTMAN CHEMICAL CO."

DOOR LOCK OPTIONS
REGENT SERIES 2002 3-POINT HOOK BOLT MORTISE LOCK (ACTIVE LEAF) WITH KEY CYLINDER (EXTERIOR) AND THUMB TURN (INTERIOR) FOR SINGLE AND DOUBLE DOORS
REGENT PART #2-PT-L 2-POINT THROW BOLT LOCK (INACTIVE LEAF) WITH THUMB TURN (INTERIOR) DOUBLE DOORS ONLY
SARGENT SERIES AD8400 & NB-AD8400 CONCEALED VERTICAL ROD PANIC DEVICE (ACTIVE & INACTIVE LEAF) WITH KEY CYLINDER (EXTERIOR)

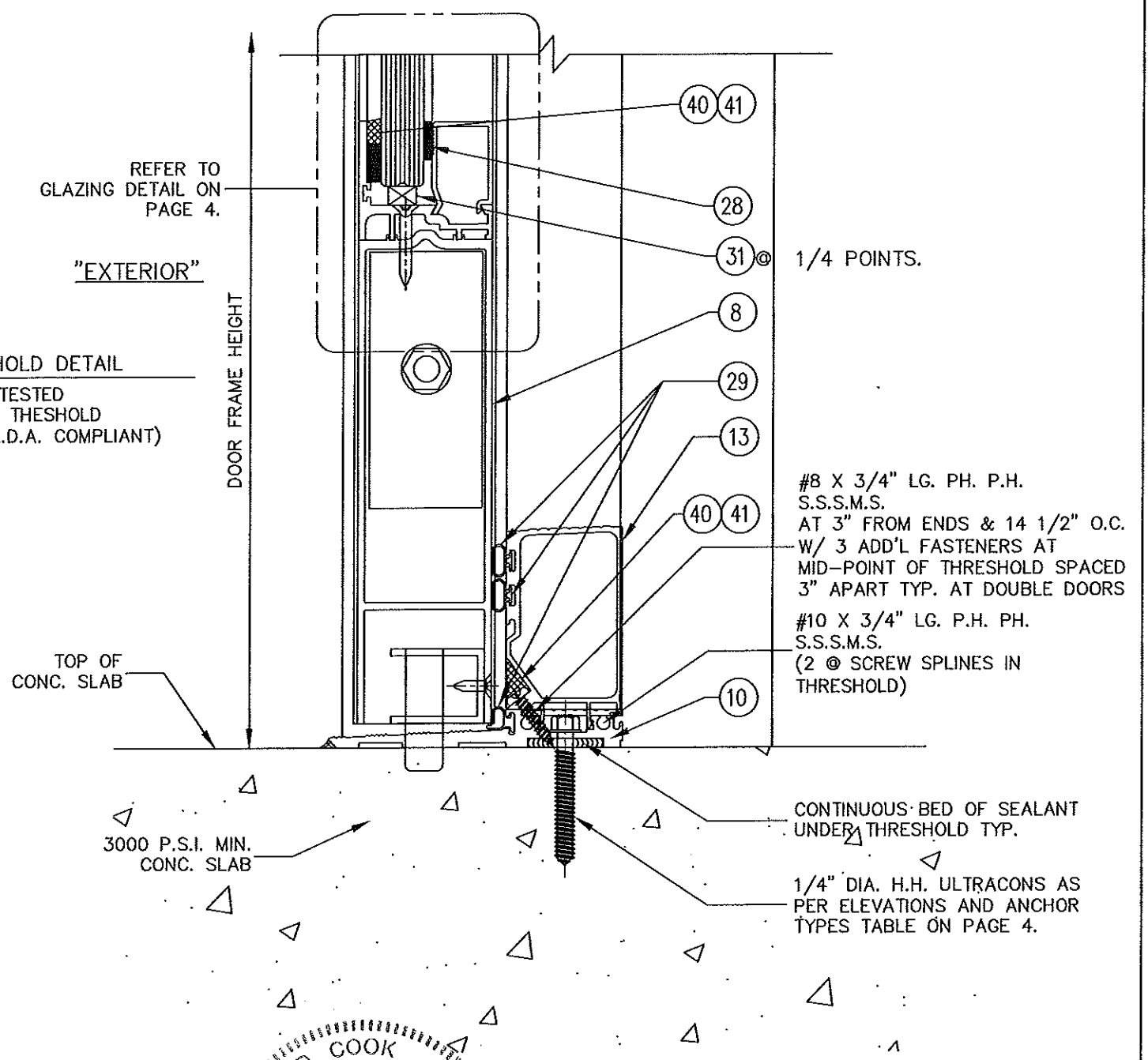
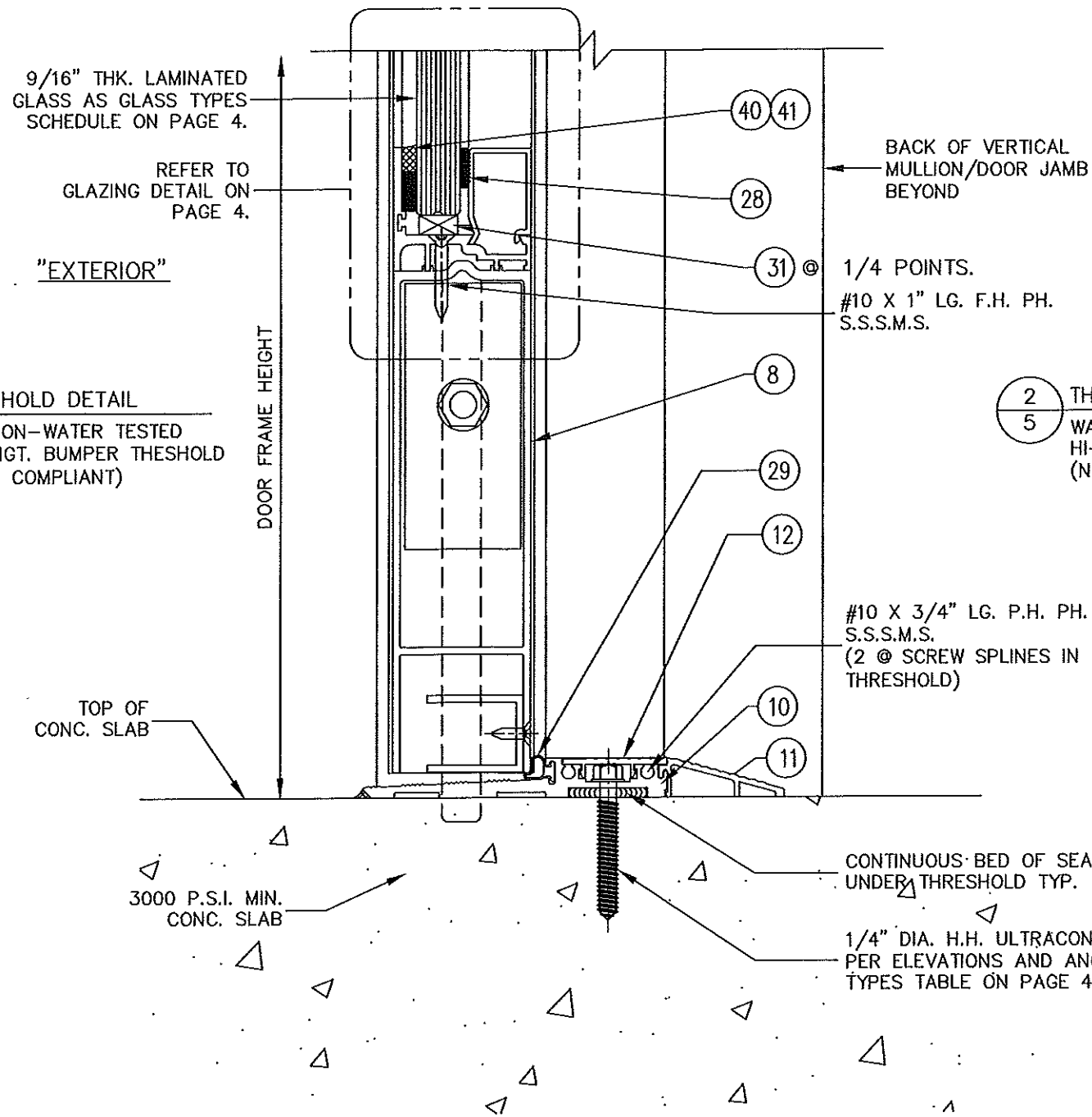
FRAME ANCHOR TYPES:
1. 1/4" DIA. H.H. ULTRACONS OR EQUAL INTO 3000 P.S.I. MIN. GROUT FILLED C.M.U. WITH 1 1/2" MIN. EMBED. MIN. EDGE DISTANCE = 2 1/2"
2. 1/4" DIA. H.H. ULTRACONS OR EQUAL INTO 3000 P.S.I. POURED CONC. WITH 1 1/2" MIN. EMBED. MIN. EDGE DISTANCE = 2 1/2"
3. 1/4" DIA. H.H. ULTRACONS OR EQUAL THRU 3/4" NOMINAL THICKNESS WOOD BUCK WITH 1 1/2" MIN. EMBED. INTO CONC. MIN. EDGE DISTANCE = 2 1/2"
4. 1/4" DIA. H.H. ULTRACONS OR EQUAL INTO 1 1/2" NOMINAL THICKNESS (2 X 6) WOOD BUCK WITH 1 3/4" MIN. EMBED INTO STRUCTURAL WOOD FRAMING. (MIN. SPECIFIC GRAVITY = 0.55) MIN. EDGE DISTANCE = 1 1/4"
5. #14 X 1 1/4" H.H. SELF THREADING SCREWS (ELCO "DRILL-FLEX" OR "TEKS") INTO STEEL OR ALUMINUM FRAMING (STEEL: A36 MIN. YIELD STRENGTH - 1/8" MIN. THICKNESS) (ALUMINUM: 6063-T5 MIN. ALLOY/TEMPER) FASTENERS MUST PENETRATE THRU METAL SUBSTRATE A MINIMUM OF 1/4"

PRODUCT NAME: SUMMIT+ ALUMINUM OUTSWING DOOR SYSTEM - LMI		
DRAWING NUMBER: SUMMIT+OS.LMI	DRAW BY: M.G.	PRODUCT APPROVAL NO.: FL27984.1
SHT. 4 OF 16	SCALE: 6"=1'-0"	DATE: 08/17/18


ALDORA
 ALUMINUM AND GLASS PRODUCTS, INC.
 11500 MIRAMAR PKWY. SUITE 300 MIRAMAR, FL. 33025
 PHONE: (954) 784-6900 FAX: (954) 784-6901




BROMLEY•COOK ENGINEERING, INC.
 STRUCTURAL ENGINEERING SERVICES
 5440 N.W. 33RD AVENUE SUITE 100
 FORT LAUDERDALE, FLORIDA 33309
 TEL: (954) 772-4624 FAX: (954) 772-4634
 CERT. OF AUTH. #00009124

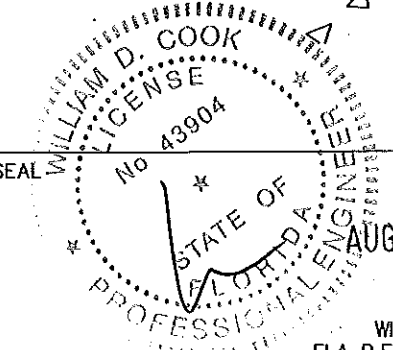


1 THRESHOLD DETAIL
5 STD. NON-WATER TESTED
1/2" HGT. BUMPER THRESHOLD
(A.D.A. COMPLIANT)

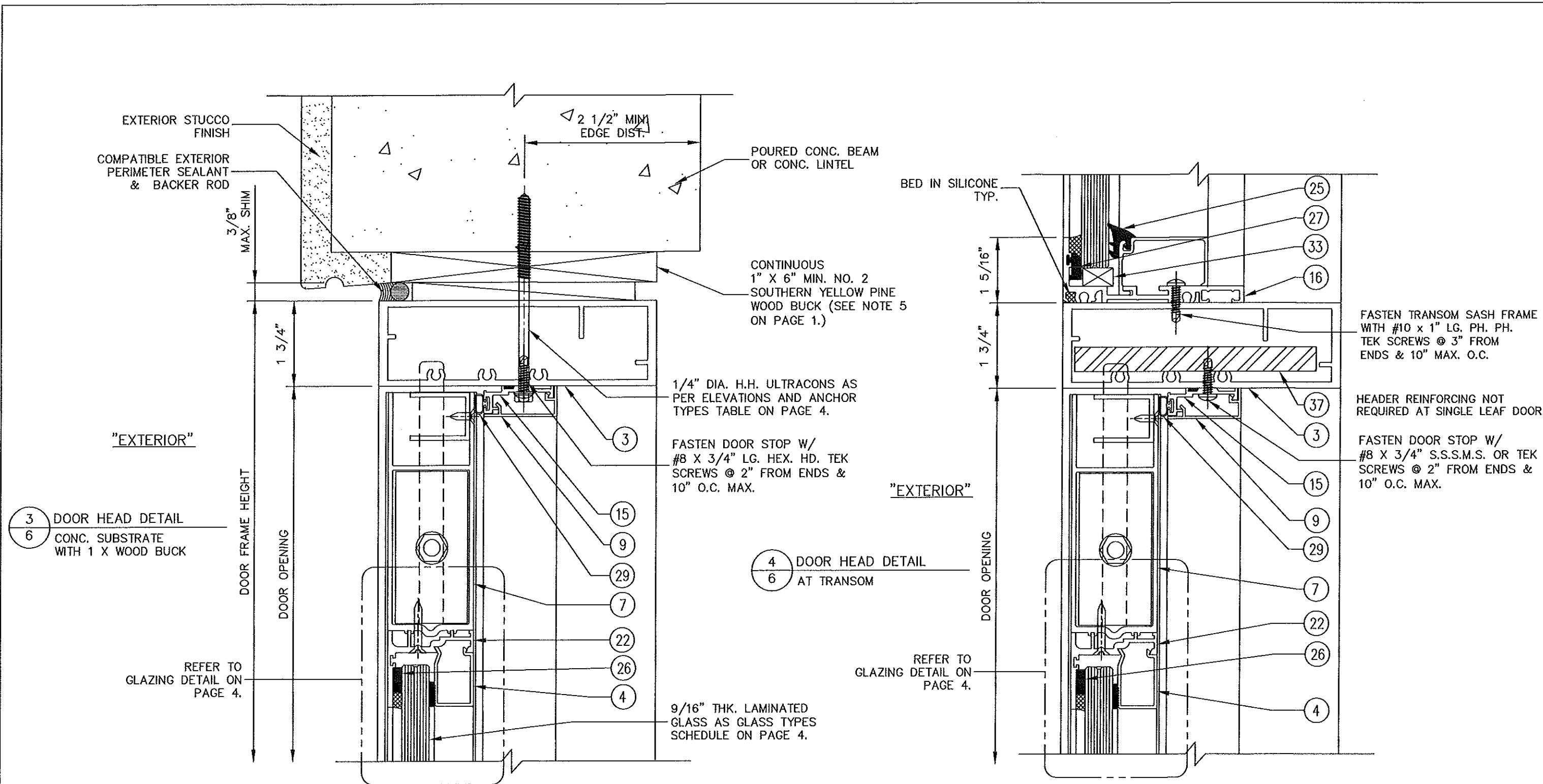
2 THRESHOLD DETAIL
5 WATER TESTED
HI-RISE THRESHOLD
(NON-A.D.A. COMPLIANT)

PRODUCT NAME: SUMMIT+ ALUMINUM OUTSWING DOOR SYSTEM - LMI		
DRAWING NUMBER: SUMMIT+OS.LMI	DRAW BY: M.G.	PRODUCT APPROVAL NO.: FL27984.1
SHT. 5 of 16	SCALE: 6"=1'-0"	DATE: 08/17/18



ALDORA
 ALUMINUM AND GLASS PRODUCTS, INC.
 11500 MIRAMAR PKWY. SUITE 300 MIRAMAR, FL. 33025
 PHONE: (954) 784-6900 FAX: (954) 784-6901

SEAL

 WILLIAM D. COOK P.E.
 FLA P.E. #43904, FLA S.I. #2008

BROMLEY-COOK ENGINEERING, INC.
 STRUCTURAL ENGINEERING SERVICES
 5440 N.W. 33RD AVENUE SUITE 100
 FORT LAUDERDALE, FLORIDA 33309
 TEL: (954) 772-4624 FAX: (954) 772-4634
 CERT. OF AUTH. #00009124

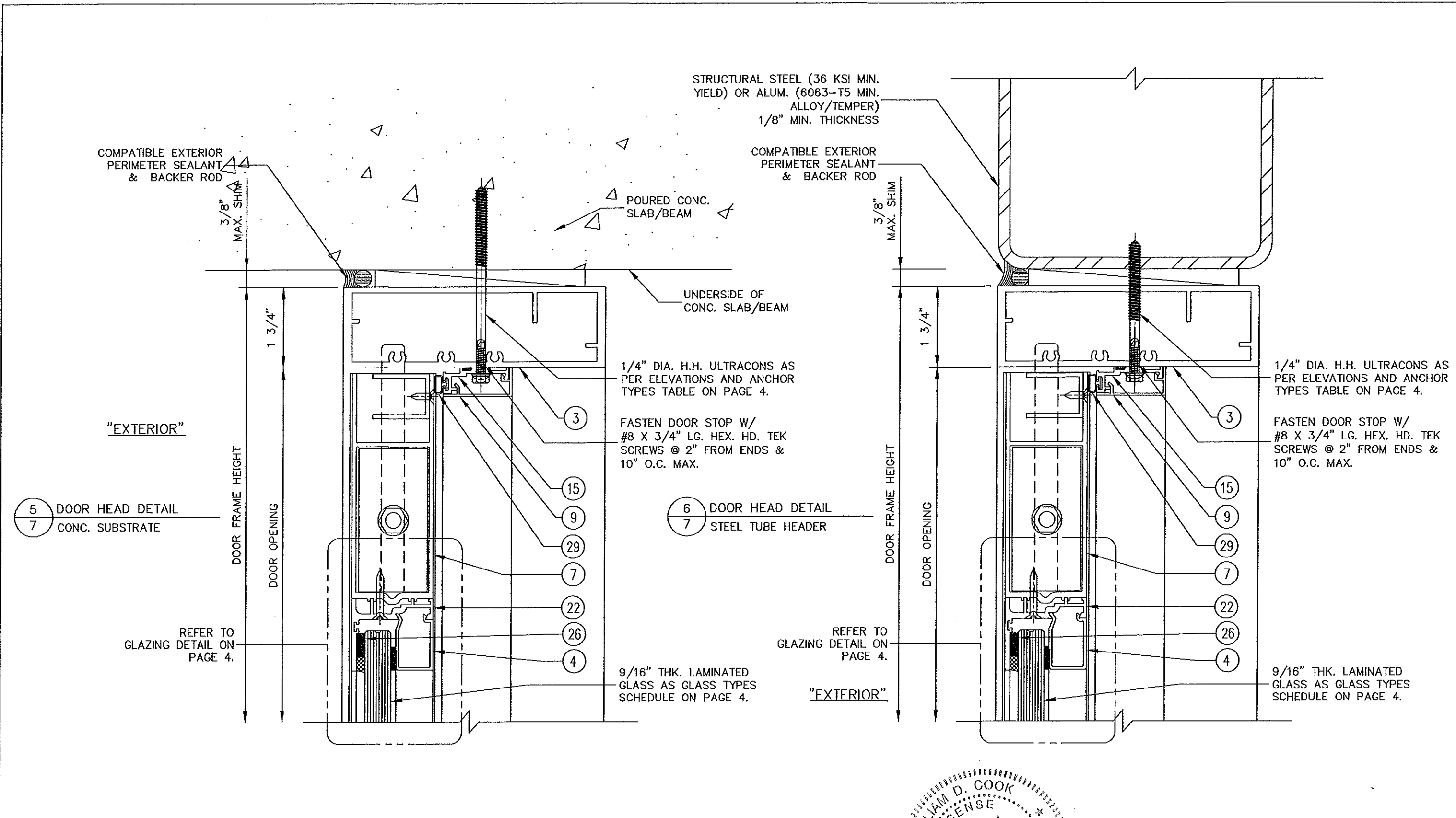


PRODUCT NAME: SUMMIT+ ALUMINUM OUTSWING DOOR SYSTEM - LMI		
DRAWING NUMBER: SUMMIT+OS.LMI	DRAW BY: M.G.	PRODUCT APPROVAL NO.: FL27984.1
SHT. 6 OF 16	SCALE: 6"=1'-0"	DATE: 08/17/18



ALDORA
 ALUMINUM AND GLASS PRODUCTS, INC.
 11500 MIRAMAR PKWY. SUITE 300 MIRAMAR, FL. 33025
 PHONE: (954) 784-6900 FAX: (954) 784-6901

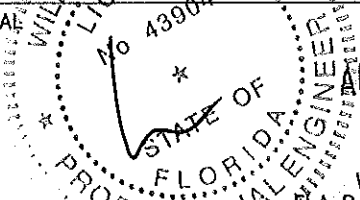
SEAL
 WILLIAM D. COOK
 LICENSE
 No 43904
 STATE OF FLORIDA
 PROFESSIONAL ENGINEER
 AUG 17 2018
 WILLIAM D. COOK P.E.
 FLA P.E. #43904, FLA S.I. #2008

BROMLEY-COOK ENGINEERING, INC.
 STRUCTURAL ENGINEERING SERVICES
 5440 N.W. 33RD AVENUE SUITE 100
 FORT LAUDERDALE, FLORIDA 33309
 TEL: (954) 772-4624 FAX: (954) 772-4634
 CERT. OF AUTH. #00009124

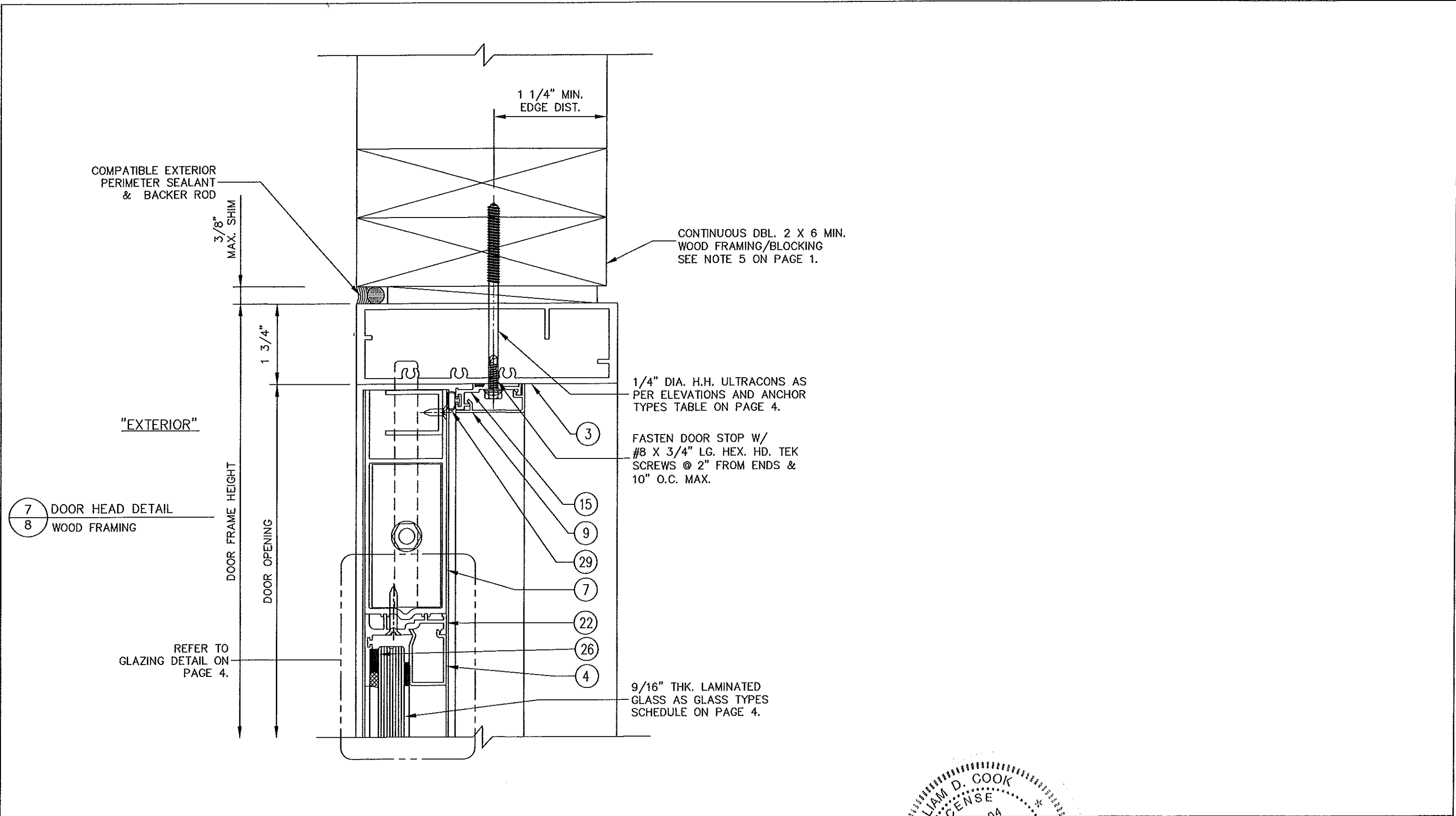


PRODUCT NAME: SUMMIT+ ALUMINUM OUTSWING DOOR SYSTEM - LMI		
DRAWING NUMBER: SUMMIT+OS.LMI	DRAW BY: M.G.	PRODUCT APPROVAL NO.: FL27984.1
SHT. 7 of 16	SCALE: 6"=1'-0"	DATE: 08/17/18


ALDORA
 ALUMINUM AND GLASS PRODUCTS, INC.
 11500 MIRAMAR PKWY. SUITE 300 MIRAMAR, FL. 33025
 PHONE: (954) 784-6900 FAX: (954) 784-6901

SEAL: 
 WILLIAM D. COOK P.E.
 FLA P.E. #43904, FLA S.I. #2008


BROMLEY•COOK ENGINEERING, INC.
 STRUCTURAL ENGINEERING SERVICES
 5440 N.W. 33RD AVENUE SUITE 100
 FORT LAUDERDALE, FLORIDA 33309
 TEL: (954) 772-4624 FAX: (954) 772-4634
 CERT. OF AUTH. #00009124



7 DOOR HEAD DETAIL
8 WOOD FRAMING

REFER TO
GLAZING DETAIL ON
PAGE 4.

PRODUCT NAME: SUMMIT+ ALUMINUM OUTSWING DOOR SYSTEM - LMI		
DRAWING NUMBER: SUMMIT+OS.LMI	DRAW BY: M.G.	PRODUCT APPROVAL NO.: FL27984.1
SHT. 8 OF 16	SCALE: 6"=1'-0"	DATE: 08/17/18


ALDORA
ALUMINUM AND GLASS PRODUCTS, INC.
 11500 MIRAMAR PKWY. SUITE 300 MIRAMAR, FL. 33025
 PHONE: (954) 784-6900 FAX: (954) 784-6901

SEAL
 WILLIAM D. COOK
 LICENSE
 No 43904
 STATE OF FLORIDA
 PROFESSIONAL ENGINEER
 AUG 17 2018
 WILLIAM D. COOK P.E.
 FLA P.E. #43904, FLA S.I. #2008

BROMLEY-COOK ENGINEERING, INC.
 STRUCTURAL ENGINEERING SERVICES
 5440 N.W. 33RD AVENUE SUITE 100
 FORT LAUDERDALE, FLORIDA 33309
 TEL: (954) 772-4624 FAX: (954) 772-4634
 CERT. OF AUTH. #00009124

CONTINUOUS
1" X 4" MIN. NO. 2
SOUTHERN YELLOW PINE
WOOD BUCK
(SEE NOTE 5 ON PAGE 1.)

8" CONC. BLOCK WALL
WITH GROUT FILLED CELL OR
OR CONC. COLUMN

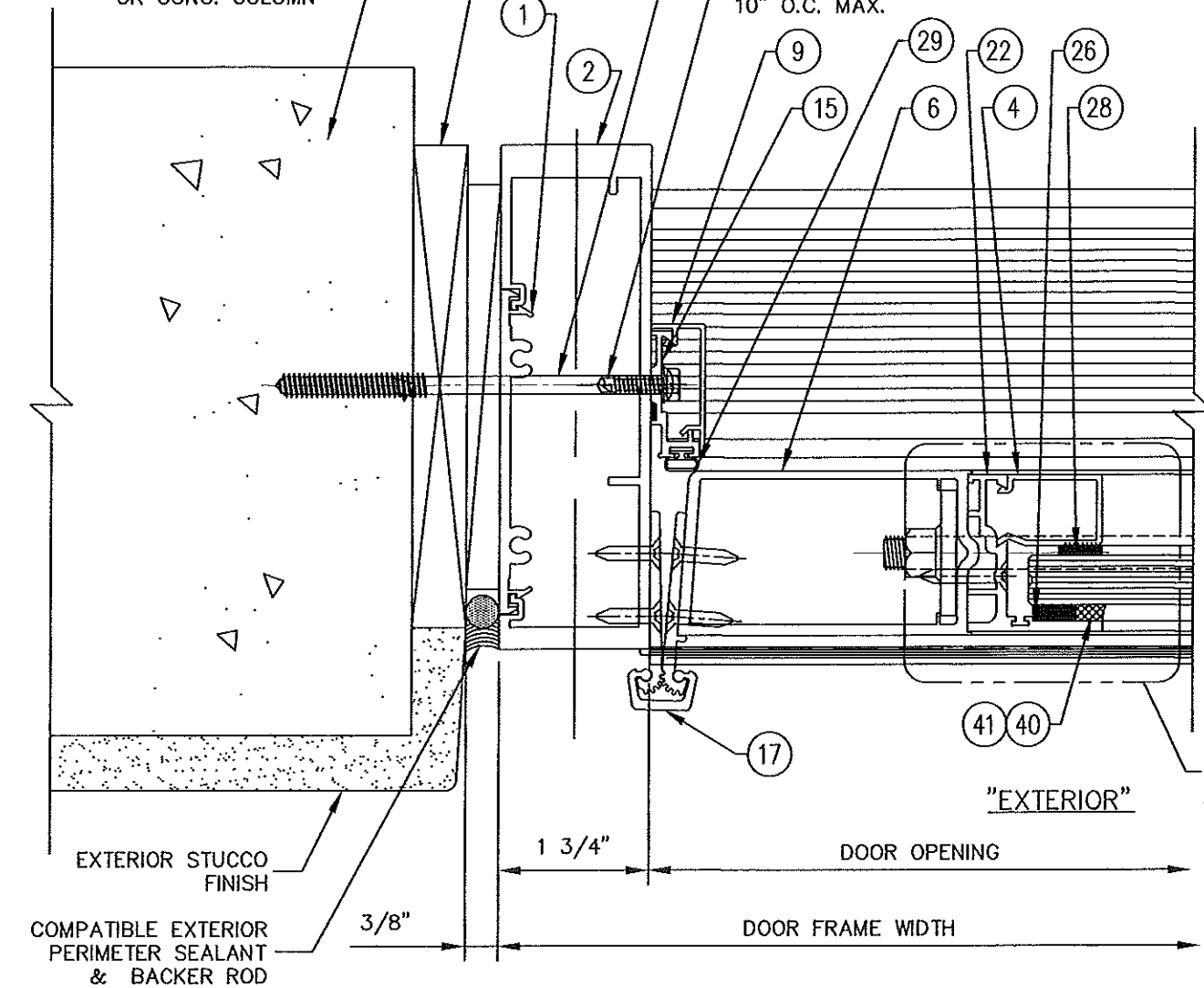
1/4" DIA. H.H. ULTRACONS AS
PER ELEVATIONS AND ANCHOR
TYPES TABLE ON PAGE 4.

FASTEN DOOR STOP W/
#8 X 3/4" LG. HEX. HD. TEK
SCREWS @ 2" FROM ENDS &
10" O.C. MAX.

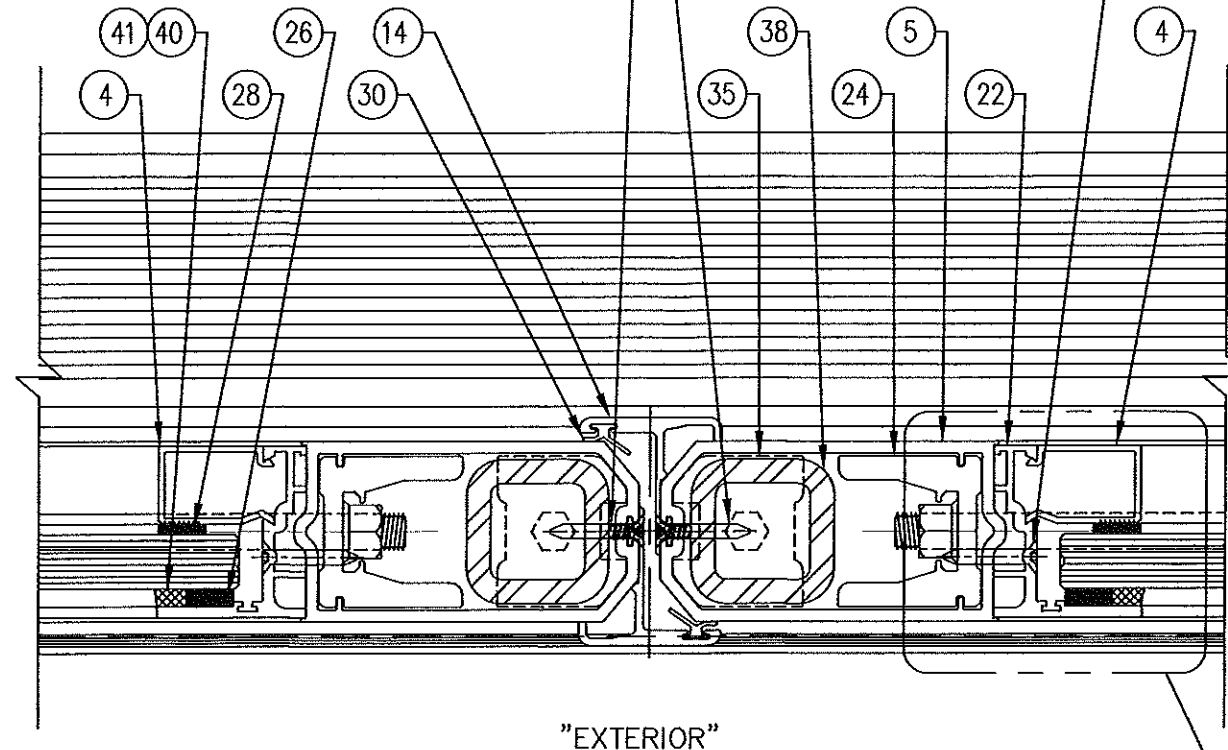
#10 X 1" LG.
F.H. PH. S.S.S.M.S. UNDERCUT
(2 PER STL. TUBE).

#8 X 3/8" LG.
F.H. PH. S.S.S.M.S. TYPE "B" @ 8" O.C.
(NOT ENGAGING W/ STL. TUBES)

#10 X 1" LG. F.H. PH.
S.S.S.M.S.



REFER TO
GLAZING DETAIL ON
PAGE 4.

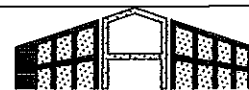


REFER TO
GLAZING DETAIL ON
PAGE 4.

- 8 DOOR JAMB DETAIL
- 9 CONC. SUBSTRATE WITH 1 X WOOD BUCK

- 9 DOOR MEEETING STILES
- 9 WITH WATER RESISTANT WEATHER STRIPPING/ASTRAGAL

PRODUCT NAME: SUMMIT+ ALUMINUM OUTSWING DOOR SYSTEM - LMI		
DRAWING NUMBER: SUMMIT+OS.LMI	DRAW BY: M.G.	PRODUCT APPROVAL NO.: FL27984.1
SHT. 9 OF 16	SCALE: 6"=1'-0"	DATE: 08/17/18

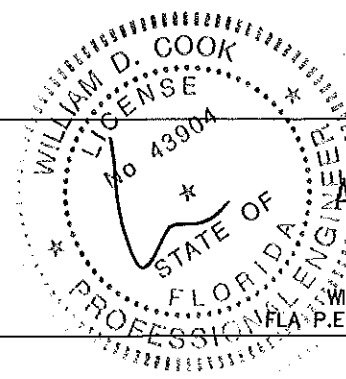


ALDORA

ALUMINUM AND GLASS PRODUCTS, INC.

11500 MIRAMAR PKWY. SUITE 300 MIRAMAR, FL. 33025
PHONE: (954) 784-6900 FAX: (954) 784-6901

SEAL



AUG 17 2018

WILLIAM D. COOK P.E.
FLA. P.E. #43904, FLA S.I. #2008

BROMLEY+COOK ENGINEERING, INC.
STRUCTURAL ENGINEERING SERVICES
5440 N.W. 33RD AVENUE SUITE 100
FORT LAUDERDALE, FLORIDA 33309
TEL: (954) 772-4624 FAX: (954) 772-4634
CERT. OF AUTH. #00009124

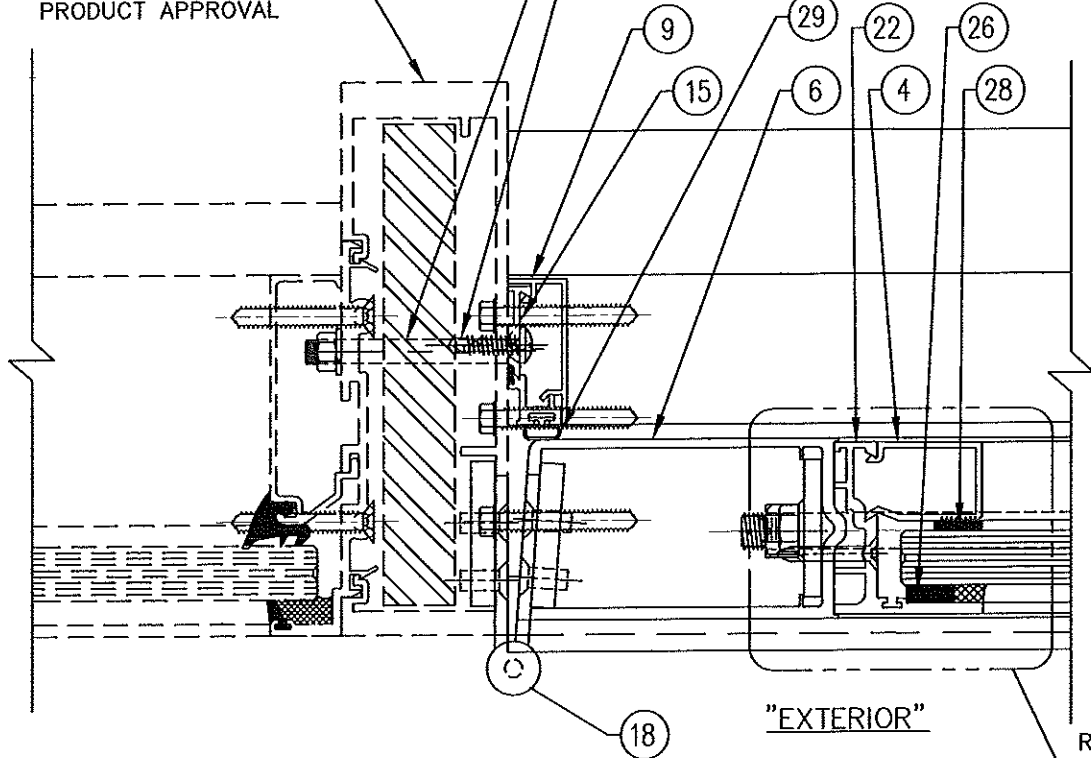
ALDORA ALUMINUM & GLASS
PRODUCTS ALUMINUM
STOREFRONT/ WINDOW WALL
SYSTEM AS PER SEPARATE
PRODUCT APPROVAL

(3) 1/4" ϕ - 20 X 2 1/4" LG. FT. HD.
PH. BOLTS ST/ST W/NUT &
WASHER AT 4" FROM ENDS & MID
SPAN
#8 X 3/4" LG. HEX. HD. TEKS
SCREWS

9/16" THK. LAMINATED GLASS
(REFER TO THE CHART FOR SPECS)

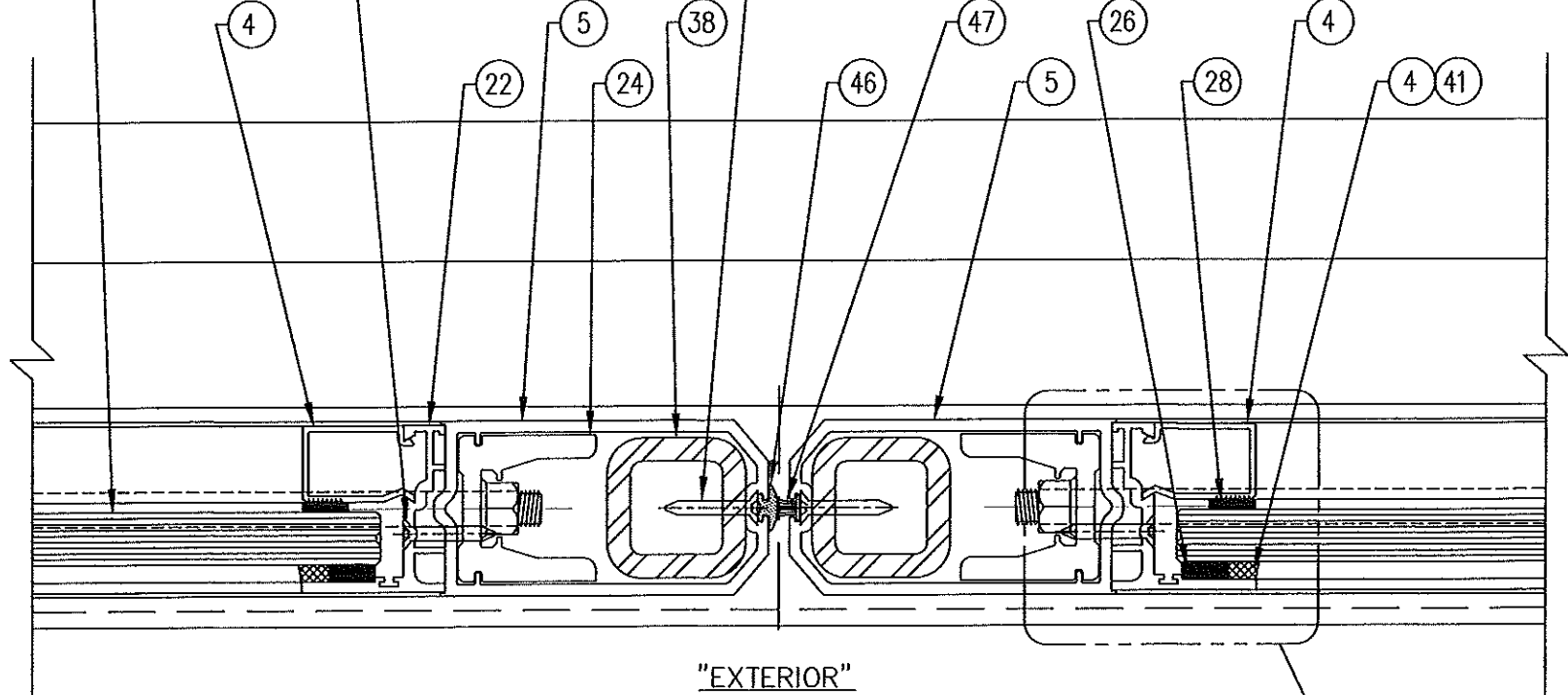
#10 X 1" LG. FT. HD. PH.
SMS. ST/ST.

#10 X 1" LG.
FT. HD. PH. SMS. ST/ST.
UNDERCUT
(2 PER STL. TUBE).



10 DOOR JAMB DETAIL
10 AT INTERMEDIATE VERTICAL
MULLION


REFER TO
GLAZING DETAIL ON
PAGE 4.

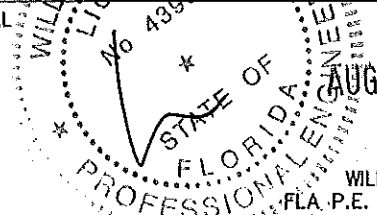


11 DOOR MEETING STILES
10 NON-WATER RESISTANT
WEATHER STRIPPING

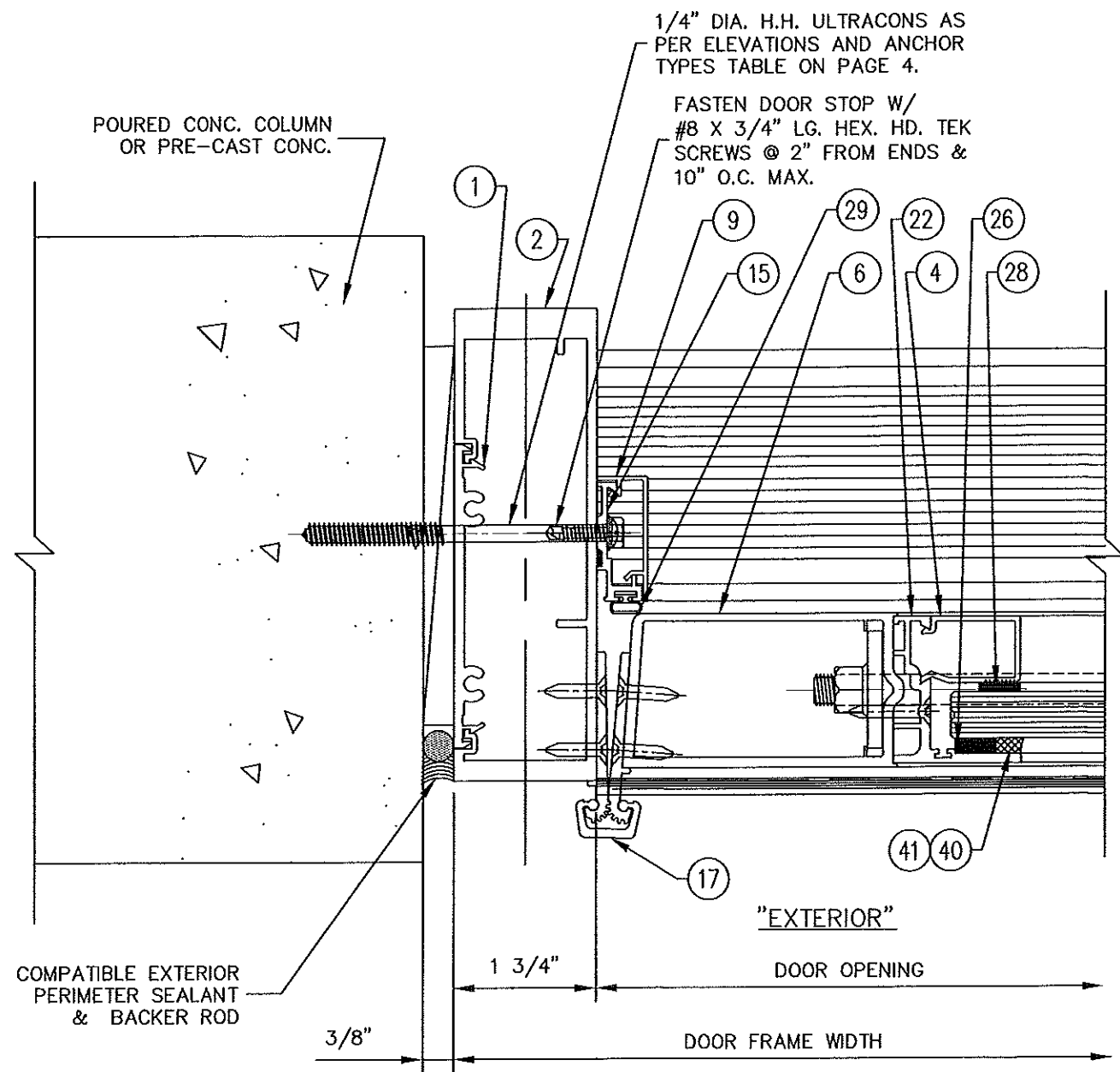
REFER TO
GLAZING DETAIL ON
PAGE 4.

PRODUCT NAME: SUMMIT+ ALUMINUM OUTSWING DOOR SYSTEM - LMI		
DRAWING NUMBER: SUMMIT+OS.LMI	DRAW BY: M.G.	PRODUCT APPROVAL NO.: FL27984.1
SHT. 10 of 16	SCALE: 6"=1'-0"	DATE: 08/17/18

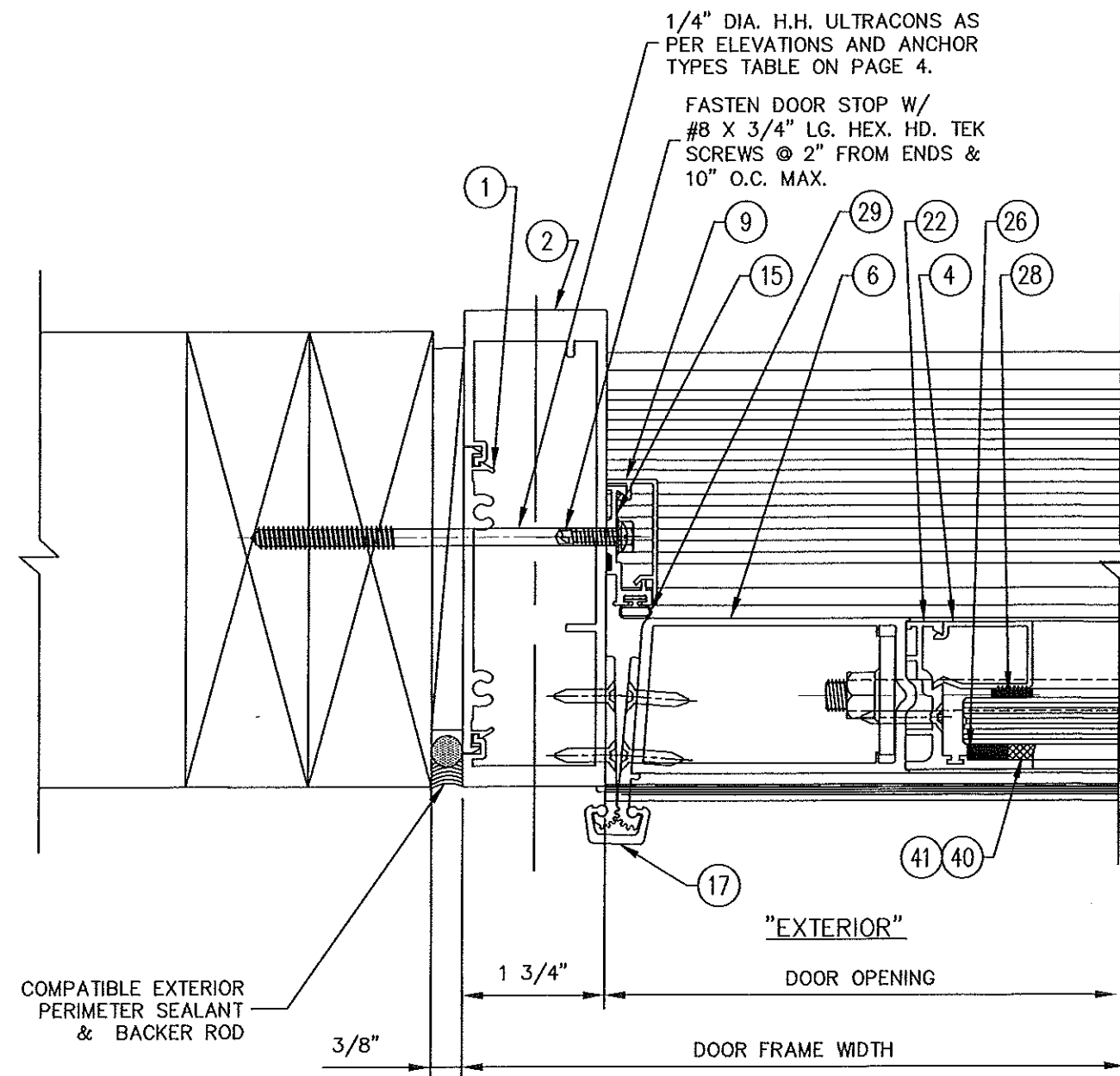

ALDORA
 ALUMINUM AND GLASS PRODUCTS, INC.
 11500 MIRAMAR PKWY. SUITE 300 MIRAMAR, FL. 33025
 PHONE: (954) 784-6900 FAX: (954) 784-6901

SEAL

 WILLIAM D. COOK P.E.
 FLA. P.E. #43904, FLA. S.I. #2008

BROMLEY-COOK ENGINEERING, INC.
 STRUCTURAL ENGINEERING SERVICES
 5440 N.W. 33RD AVENUE SUITE 100
 FORT LAUDERDALE, FLORIDA 33309
 TEL: (954) 772-4624 FAX: (954) 772-4634
 CERT. OF AUTH. #00009124




12 DOOR JAMB DETAIL
11 CONC. SUBSTRATE



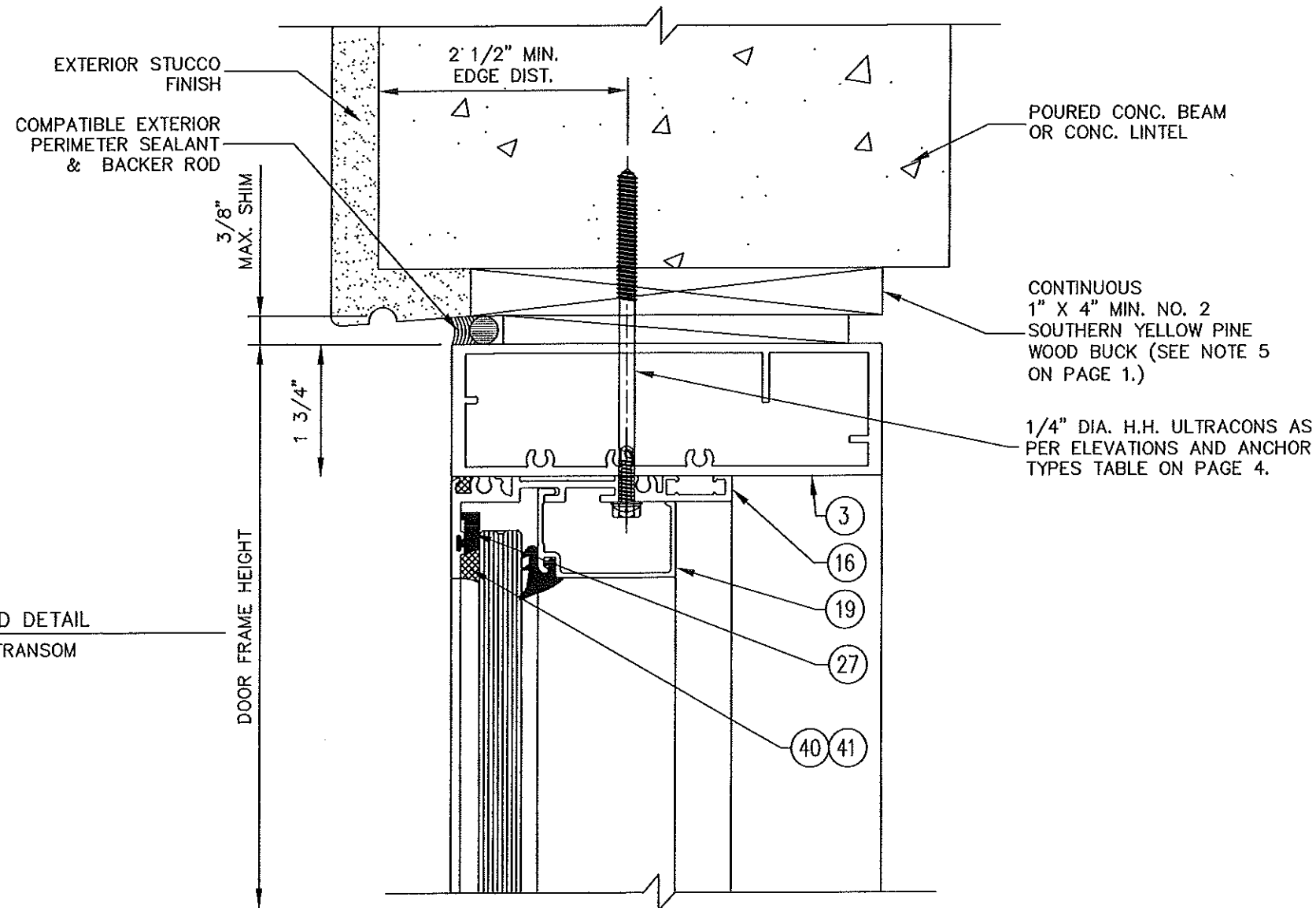
13 DOOR JAMB DETAIL
11 WOOD FRAMING
SEE NOTE 5 ON PAGE 1.

PRODUCT NAME: SUMMIT+ ALUMINUM OUTSWING DOOR SYSTEM - LMI		
DRAWING NUMBER: SUMMIT+OS.LMI	DRAW BY: M.G.	PRODUCT APPROVAL NO.: FL27984.1
SHT. 11 of 16	SCALE: 6"=1'-0"	DATE: 08/17/18


ALDORA
 ALUMINUM AND GLASS PRODUCTS, INC.
 11500 MIRAMAR PKWY. SUITE 300 MIRAMAR, FL. 33025
 PHONE: (954) 784-6900 FAX: (954) 784-6901


SEAL
 WILLIAM D. COOK
 LICENSE
 No 43904
 STATE OF FLORIDA
 PROFESSIONAL ENGINEER
 AUG 17 2018
 WILLIAM D. COOK P.E.
 FLA P.E. #43904, FLA S.I. #2008

BROMLEY•COOK ENGINEERING, INC.
 STRUCTURAL ENGINEERING SERVICES
 5440 N.W. 33RD AVENUE SUITE 100
 FORT LAUDERDALE, FLORIDA 33309
 TEL: (954) 772-4624 FAX: (954) 772-4634
 CERT. OF AUTH. #00009124

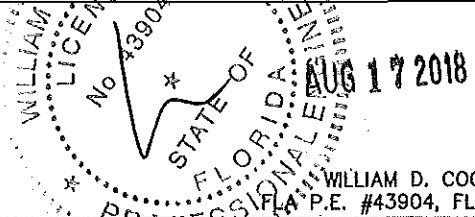


14 HEAD DETAIL
12 AT TRANSOM

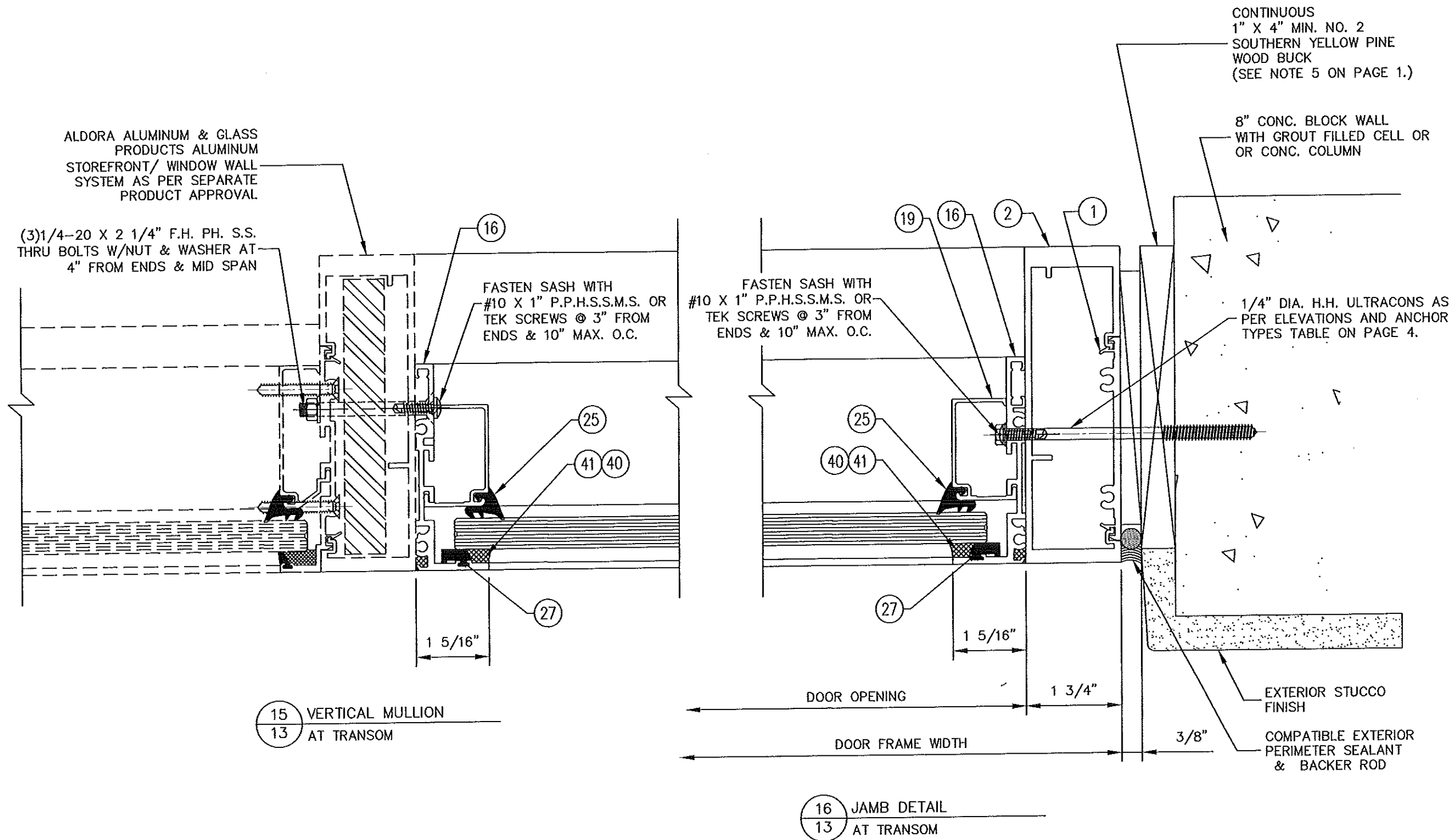
PRODUCT NAME: SUMMIT+ ALUMINUM OUTSWING DOOR SYSTEM - LMI		
DRAWING NUMBER: SUMMIT+OS,LMI	DRAW BY: M.G.	PRODUCT APPROVAL NO.: FL27984.1
SHT. 12 OF 16	SCALE: 6"=1'-0"	DATE: 08/17/18


ALDORA
ALUMINUM AND GLASS PRODUCTS, INC.
 11500 MIRAMAR PKWY. SUITE 300 MIRAMAR, FL. 33025
 PHONE: (954) 784-6900 FAX: (954) 784-6901


SEAL


 WILLIAM D. COOK P.E.
 #43904, FLA S.I. #2008

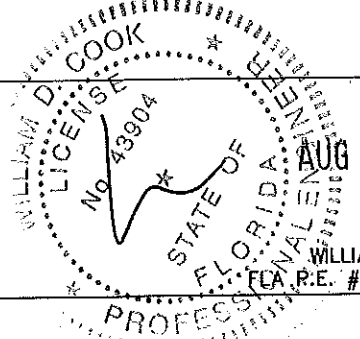
BROMLEY•COOK ENGINEERING, INC.
 STRUCTURAL ENGINEERING SERVICES
 5440 N.W. 33RD AVENUE SUITE 100
 FORT LAUDERDALE, FLORIDA 33309
 TEL: (954) 772-4624 FAX: (954) 772-4634
 CERT. OF AUTH. #00009124



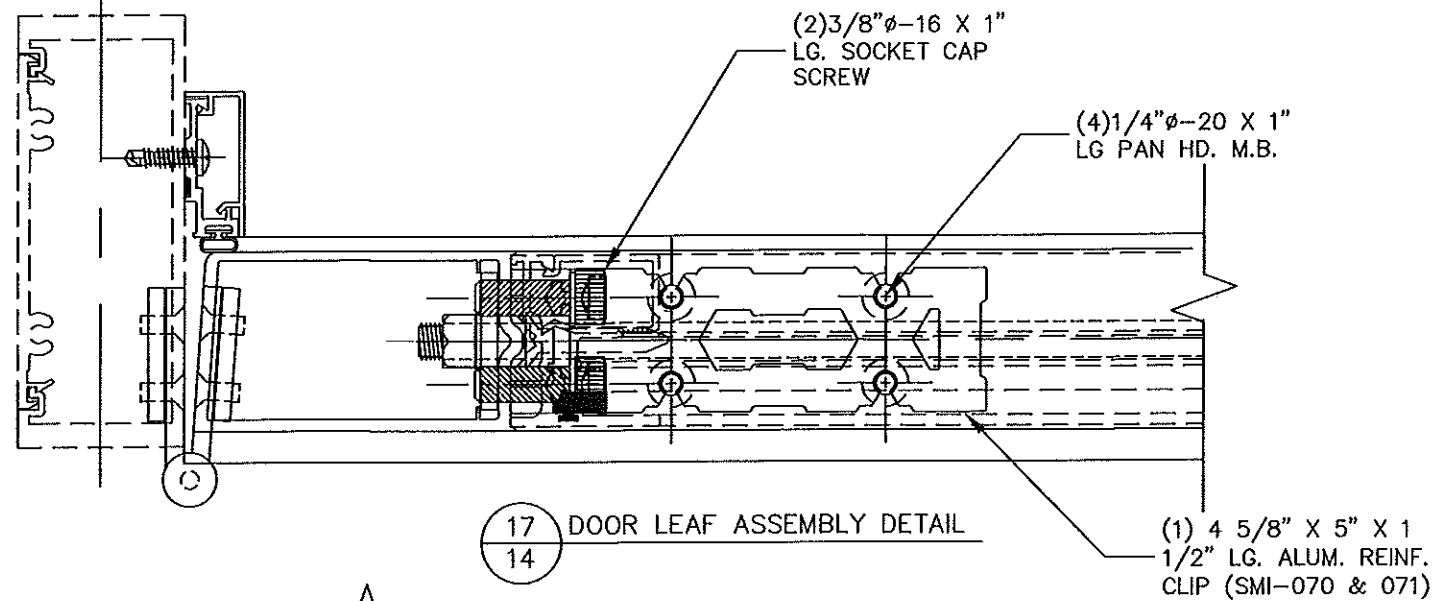
PRODUCT NAME: SUMMIT+ ALUMINUM OUTSWING DOOR SYSTEM - LMI		
DRAWING NUMBER: SUMMIT+OS.LMI	DRAW BY: M.G.	PRODUCT APPROVAL NO.: FL27984.1
SHT. 13 of 16	SCALE: 6"=1'-0"	DATE: 08/17/18


ALDORA
 ALUMINUM AND GLASS PRODUCTS, INC.
 11500 MIRAMAR PKWY. SUITE 300 MIRAMAR, FL. 33025
 PHONE: (954) 784-6900 FAX: (954) 784-6901

SEAL

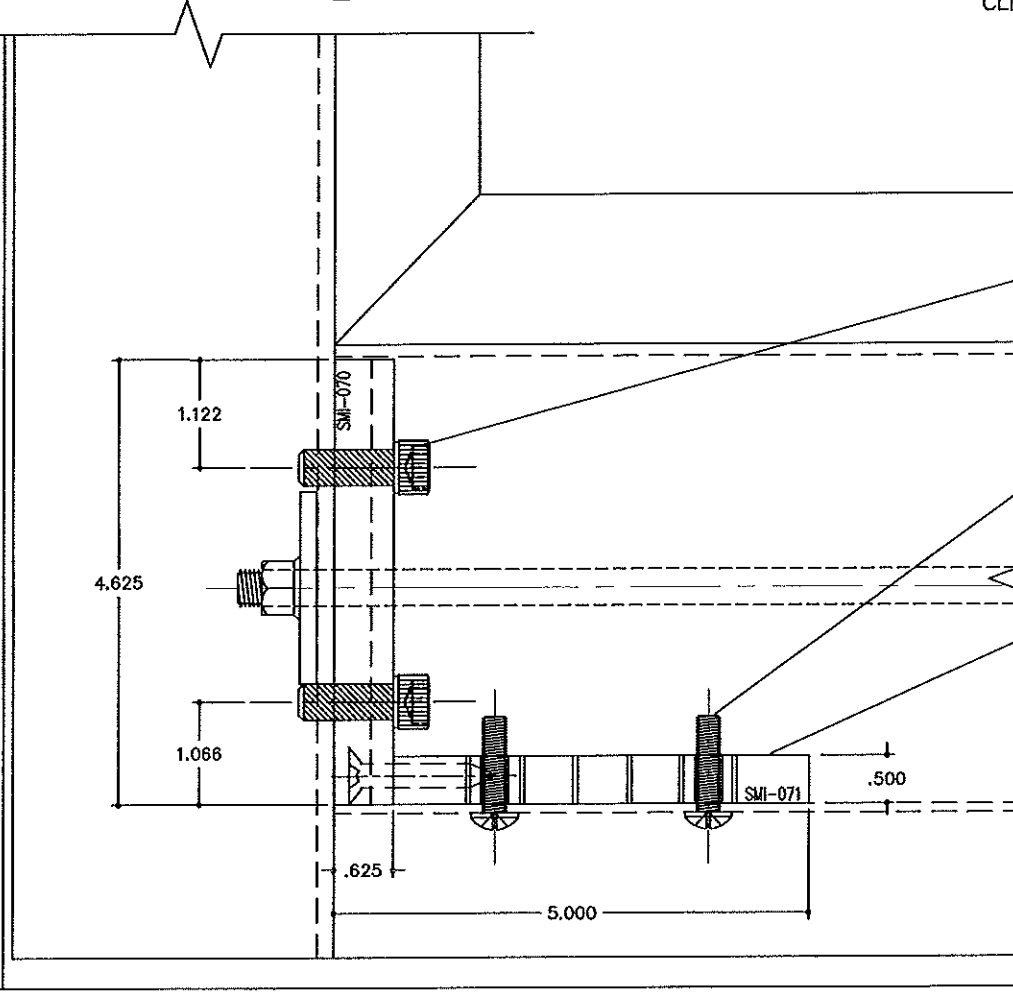

 WILLIAM D. COOK P.E.
 FEA R.E. #43904, FLA S.I. #2008

BROMLEY•COOK ENGINEERING, INC.
 STRUCTURAL ENGINEERING SERVICES
 5440 N.W. 33RD AVENUE SUITE 100
 FORT LAUDERDALE, FLORIDA 33309
 TEL: (954) 772-4624 FAX: (954) 772-4634
 CERT. OF AUTH. #00009124



17 DOOR LEAF ASSEMBLY DETAIL
14

(1) 4 5/8" X 5" X 1 1/2" LG. ALUM. REINF. CLIP (SMI-070 & 071)

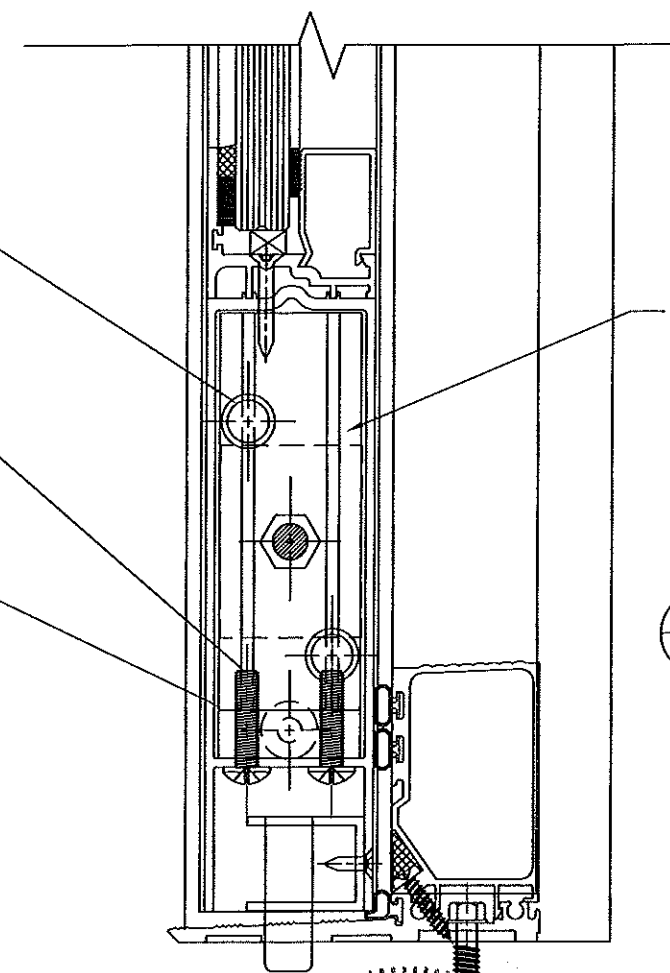


18 DOOR LEAF ASSEMBLY DETAIL
14

(2) 3/8"φ-16 X 1" LG. SOCKET CAP SCREW

(4) 1/4"φ-20 X 1" LG PAN HD. M.B.


(1) 4 5/8" X 5" X 1 1/2" LG. ALUM. REINF. CLIP(SMI-070 & 071)



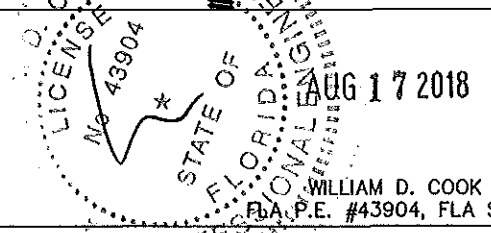
REINF. ALUM. CLIPS (SMI-070 & 071):
(2) 3 1/8" X 5" X 1 1/2" LG. (@ TOP) & (2) 4 5/8" X 5" X 1 1/2" LG. (@ BOTTOM) PER DOOR PANEL.
(2) 8 1/8" X 5" X 1 1/2" LG. FOR 10" BOTTOM RAIL

19 DOOR LEAF ASSEMBLY DETAIL
14

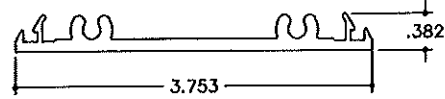
PRODUCT NAME: SUMMIT+ ALUMINUM OUTSWING DOOR SYSTEM - LMI		
DRAWING NUMBER: SUMMIT+OS.LMI	DRAW BY: M.G.	PRODUCT APPROVAL NO.: FL27984.1
SHT. 14 OF 16	SCALE: 6"=1'-0"	DATE: 08/17/18


ALDORA
ALUMINUM AND GLASS PRODUCTS, INC.
 11500 MIRAMAR PKWY. SUITE 300 MIRAMAR, FL. 33025
 PHONE: (954) 784-6900 FAX: (954) 784-6901

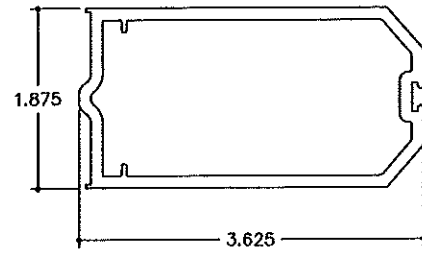
SEAL


 WILLIAM D. COOK P.E.
 FLA. P.E. #43904, FLA S.I. #2008

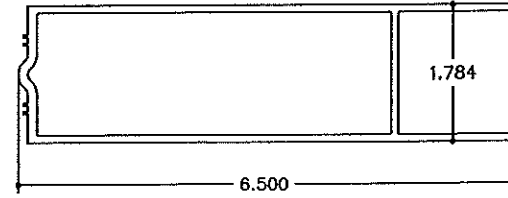
BROMLEY•COOK ENGINEERING, INC.
 STRUCTURAL ENGINEERING SERVICES
 5440 N.W. 33RD AVENUE SUITE 100
 FORT LAUDERDALE, FLORIDA 33309
 TEL: (954) 772-4624 FAX: (954) 772-4634
 CERT. OF AUTH. #00009124



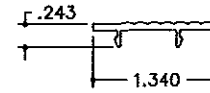
① SMI-004
PLAIN SNAP



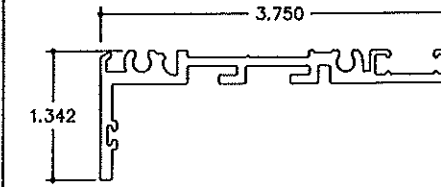
⑤ SMI-009
ACTIVE STILE



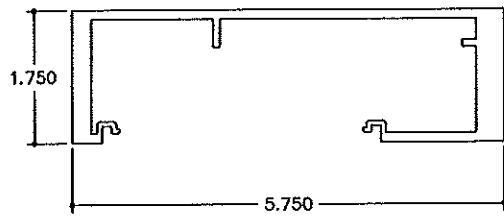
⑧ SMI-013
BOTTOM RAIL



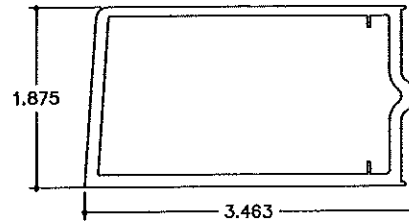
⑫ SMI-038
ADA THRESHOLD COVER



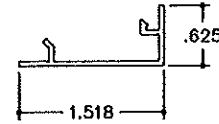
⑯ SMI-PW001
PICTURE WINDOW @ TRANSOM



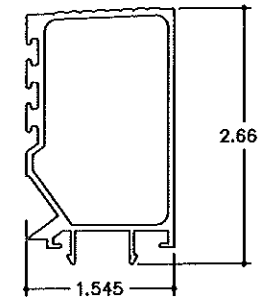
② SMI-076
FRAME JAMB



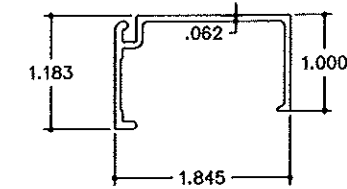
⑥ SMI-011
HINGE STILE



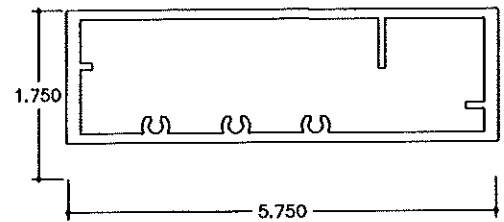
⑨ SMI-015
DOOR STOP COVER



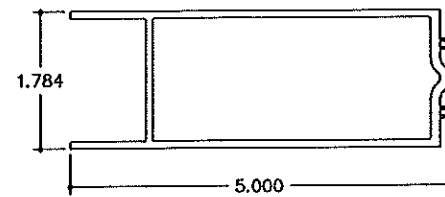
⑬ SMI-039
HI RISE THRESHOLD COVER



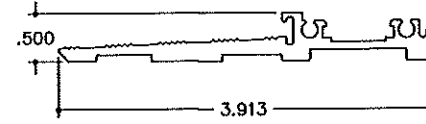
⑰ SMI-092
GLASS STOP



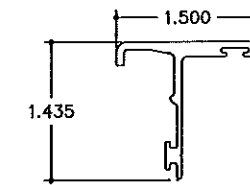
③ SMI-077
FRAME HEAD



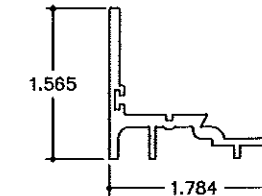
⑦ SMI-012
TOP RAIL



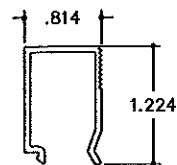
⑩ SMI-036
BUMPER THRESHOLD BASE



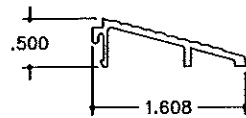
⑭ SMI-058
ASTRAGAL



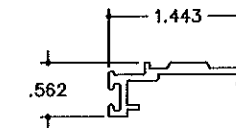
⑳ SMI-096
DOOR SASH BASE



④ SMI-008
DOOR SASH STOP



⑪ SMI-037
THRESHOLD RAMP ADAPTER



⑮ SMI-044
DOOR STOP BASE

PRODUCT NAME:
SUMMIT+ ALUMINUM OUTSWING DOOR SYSTEM - LMI

DRAWING NUMBER:
SUMMIT+OS.LMI

DRAW BY:
M.G.

PRODUCT APPROVAL NO.:
FL27984.1

SHT. 15 of 16

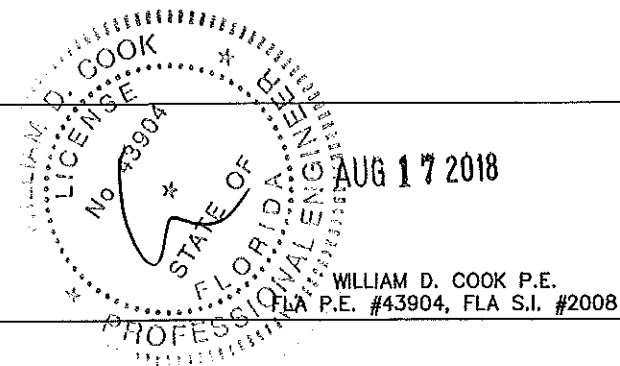
SCALE:
N/A

DATE:
08/17/18



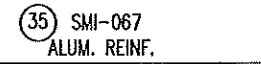
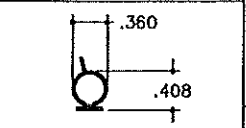
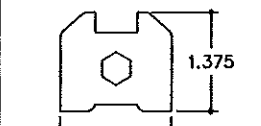
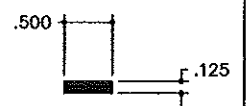
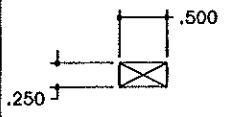
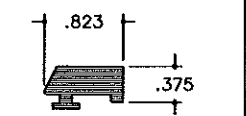
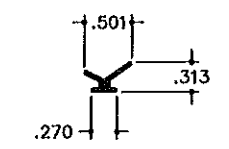
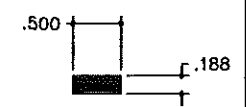
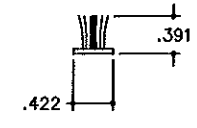
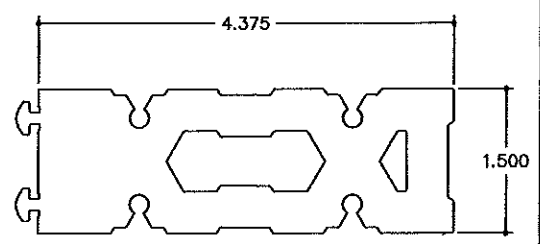
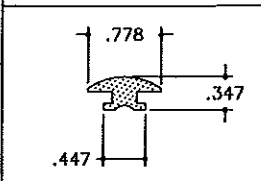
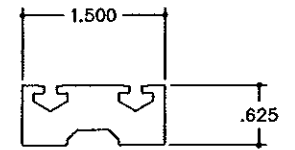
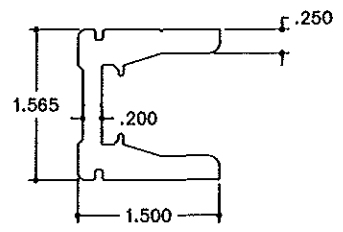
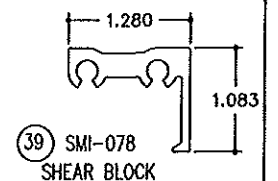
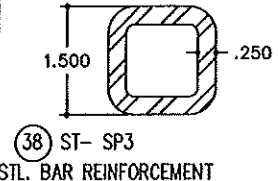
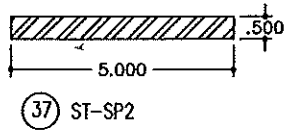
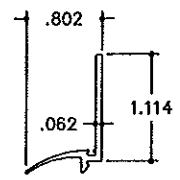
ALUMINUM AND GLASS PRODUCTS, INC.
11500 MIRAMAR PKWY. SUITE 300 MIRAMAR, FL. 33025
PHONE: (954) 784-6900 FAX: (954) 784-6901

SEAL



BROMLEY•COOK ENGINEERING, INC.
STRUCTURAL ENGINEERING SERVICES
5440 N.W. 33RD AVENUE SUITE 100
FORT LAUDERDALE, FLORIDA 33309
TEL: (954) 772-4624 FAX: (954) 772-4634
CERT. OF AUTH. #00009124

WILLIAM D. COOK P.E.
FLA P.E. #43904, FLA S.I. #2008




BILL OF MATERIALS

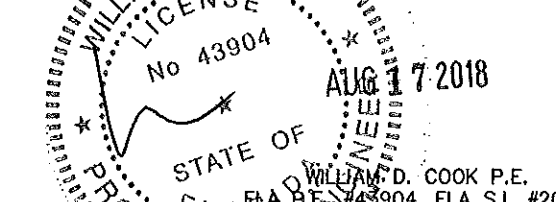
ITEM #	PART #	QTY.	DESCRIPTION	MATERIAL	MANUF. / SUPPLIER / REMARKS
1	SMI-004	AS REQ'D	PLAN SNAP	6063-T6	-
2	SMI-076	AS REQ'D	FRAME JAMB	6005-T5	-
3	SMI-077	AS REQ'D	FRAME HEAD	6005-T5	-
4	SMI-008	AS REQ'D	DOOR SASH STOP	6063-T6	-
5	SMI-009	AS REQ'D	ACTIVE / INACTIVE STILE	6063-T6	-
6	SMI-011	AS REQ'D	HINGE STILE	6063-T6	-
7	SMI-012	AS REQ'D	TOP RAIL	6063-T6	-
8	SMI-013	AS REQ'D	BOTTOM RAIL	6063-T6	-
9	SMI-015	AS REQ'D	DOOR STOP COVER	6063-T6	-
10	SMI-036	AS REQ'D	BUMPER THRESHOLD BASE	6063-T6	-
11	SMI-037	AS REQ'D	THRESHOLD RAMP ADAPTOR	6063-T6	-
12	SMI-038	AS REQ'D	ADA THRESHOLD COVER	6063-T6	-
13	SMI-039	AS REQ'D	HI-RISE THRESHOLD COVER	6063-T6	-
14	SMI-058	AS REQ'D	ASTRAGAL	6063-T6	-
15	SMI-044	AS REQ'D	DOOR STOP BASE	6063-T6	-
16	SMI-PW001	AS REQ'D	PICTURE WINDOW @ TRANSOM	6063-T6	-
17	_FM_SLI	AS REQ'D	CONTINUOUS GEAR HINGE	6063-T6	PEMCO/ASSA ABL0Y
18	4001	4 PER LEAF	4" X 4 1/2" STAINLESS STEEL BALL BEARING BUTT HINGE	S.S.	REGENT
19					
20					
21					
22	SMI-096	AS REQ'D	DOOR SASH BASE	6063-T6	-
23	SMI-097	AS REQ'D	DOOR SASH STOP	6063-T6	-
23A	SMI-G13A	AS REQ'D	SPACER/ RETAINER GASKET	SANTOPRENE	MELTPONT PLASTICS
24	SMI-051	AS REQ'D	DOOR STILE ALUM. REINF.	6005-T5	-
25	SMI-G01	AS REQ'D	GASKET (Ø INTERIOR)	EPDM	TREMCO
26	SMI-G12	AS REQ'D	DOUBLE FACE FOAM TAPE (3/16" X 1/2")	VNYL FOAM	FRANK LOWE
27	SMI-G07	AS REQ'D	GASKET (Ø EXTERIOR)	SANTOPRENE	CENTRAL PLASTICS, INC.
28	SMI-G11	AS REQ'D	SINGLE FACE FOAM TAPE (1/8" X 1/2")	VNYL FOAM	FRANK LOWE
29	SMI-B01	AS REQ'D	.385 DIA. BULB	RIGID PVC	CENTRAL PLASTICS, INC.
30	SMI-G20	AS REQ'D	ASTRAGAL FLAP	VNYL	PEMCO
31	SMI-SB03	2 PER GL.	SETTING BLOCKS (1/4" X 1/2" X 2" LG.)	EPDM	TREMCO
32			NOT USED		
33	SMI-SB06	2 PER GL.	SETTING BLOCKS (3/8" X 5/8" X 4" LG.)	EPDM	TREMCO
34			NOT USED		
35	SMI-067	AS REQ'D	2" LG. ALUM. PIN GUDE REINFORCEMENT	6005-T5	-
36			NOT USED		
37		AS REQ'D	5" X 1/2" THK. STL. REINFORCEMENT	STEEL	-
38	ST-SP3	AS REQ'D	1 1/2" X 1 1/2" X 1/4" THK. STL. TUBE REINFORCEMENT (2 PARTS PER DOOR STILE)	STEEL	-
39	SMI-078	AS REQ'D	SHEAR BLOCK	6005-T5	-
40	CWS	AS REQ'D	GLAZING COMPOUND	SILICONE	DOW CORNING
41	795	AS REQ'D	GLAZING COMPOUND	SILICONE	DOW CORNING
42			NOT USED		
43	#12 X 1 1/2"	4/CORNER	FRAME ASSEMBLY SCREWS	ST. STEEL	HEX. & FT. HEAD SHEET METAL SCREW
44	SMI-070	AS REQ'D	CORNER KEY FEMALE ALUM. REINFORCEMENT	6005-T5	-
45	SMI-071	AS REQ'D	CORNER KEY MALE ALUM. REINFORCEMENT	6005-T5	-
46	SMI-P09	AS REQ'D	PLASTIC MEETING STILE FILLER	RIGID PVC	MELTPONT PLASTICS
47	SMI-W01	AS REQ'D	WOOL PILE	PILE	ULTRAFAB
48	1/4" x 20 X 1" LG.	4/CORNER	ASSEMBLY CORNER KEY ALUM. REINF.	ST. STEEL	HEX. HD. MACHINE BOLT
49	3/8" x 1" LG.	2/CORNER	ASSEMBLY CORNER KEY ALUM. REINF.	ST. STEEL	SOCKET CAP SCREW

NOT USED

PRODUCT NAME: SUMMIT+ ALUMINUM OUTSWING DOOR SYSTEM - LMI		
DRAWING NUMBER: SUMMIT+OS.LMI	DRAW BY: M.G.	PRODUCT APPROVAL NO.: FL27984.1
SHT. 16 OF 16	SCALE: N/A	DATE: 08/17/18


ALDORA
 ALUMINUM AND GLASS PRODUCTS, INC.
 11500 MIRAMAR PKWY. SUITE 300 MIRAMAR, FL. 33025
 PHONE: (954) 784-6900 FAX: (954) 784-6901

SEAL


 WILLIAM D. COOK P.E.
 LICENSE No. 43904
 AUG 17 2018
 STATE OF FLORIDA
 PROFESSIONAL ENGINEER

BROMLEY-COOK ENGINEERING, INC.
 STRUCTURAL ENGINEERING SERVICES
 5440 N.W. 33RD AVENUE SUITE 100
 FORT LAUDERDALE, FLORIDA 33309
 TEL: (954) 772-4624 FAX: (954) 772-4634
 CERT. OF AUTH. #00009124