

SERIES K2LM ALUMINUM OUT-SWING DOOR

USE BUMPER THRESHOLD (#5A+5B) WHEN WATER INFILTRATION REQUIREMENTS ARE NOT APPLICABLE.

USE HIGH-RISE THRESHOLD COVER (#5A+5C) WHEN WATER INFILTRATION REQUIREMENTS MUST BE MET.

SEE CHARTS ON SHEET 2 FOR DESIGN LOAD CAPACITY OF SINGLE (X) AND DOUBLE (XX) LEAF DOORS W/O TRANSOMS.

SEE CHARTS ON SHEET 3 FOR DESIGN LOAD CAPACITY OF SINGLE (O/X) OR DOUBLE (O/XX) LEAF DOORS WITH TRANSOMS.

SEE CHARTS ON SHEETS 7 & 8 FOR DESIGN LOAD CAPACITY OF DOOR MULLION.

USE LOWER VALUES OF DOOR MULLION CHARTS (SHEETS 7 & 8) OR DOOR CAPACITY CHARTS (SHEETS 2 & 3).

THIS PRODUCT HAS BEEN DESIGNED AND TESTED TO COMPLY WITH THE REQUIREMENTS OF THE 2020 (7TH EDITION)/2023 (8TH EDITION) FLORIDA BUILDING CODE INCLUDING HIGH VELOCITY HURRICANE ZONE (HVHZ).

1BY OR 2BY WOOD BUCKS & BUCK FASTENERS BY OTHERS, MUST BE DESIGNED AND INSTALLED ADEQUATELY TO TRANSFER APPLIED PRODUCT LOADS TO THE BUILDING STRUCTURE.

ANCHORS SHALL BE CORROSION RESISTANT, SPACED AS SHOWN ON DETAILS AND INSTALLED PER MANUF'S INSTRUCTIONS. SPECIFIED EMBEDMENT TO BASE MATERIAL SHALL BE BEYOND WALL DRESSING OR STUCCO.

A LOAD DURATION INCREASE IS USED IN DESIGN OF ANCHORS INTO WOOD ONLY.

ALL SHIMS TO BE HIGH IMPACT, NON-METALLIC AND NON-COMPRESSIBLE.

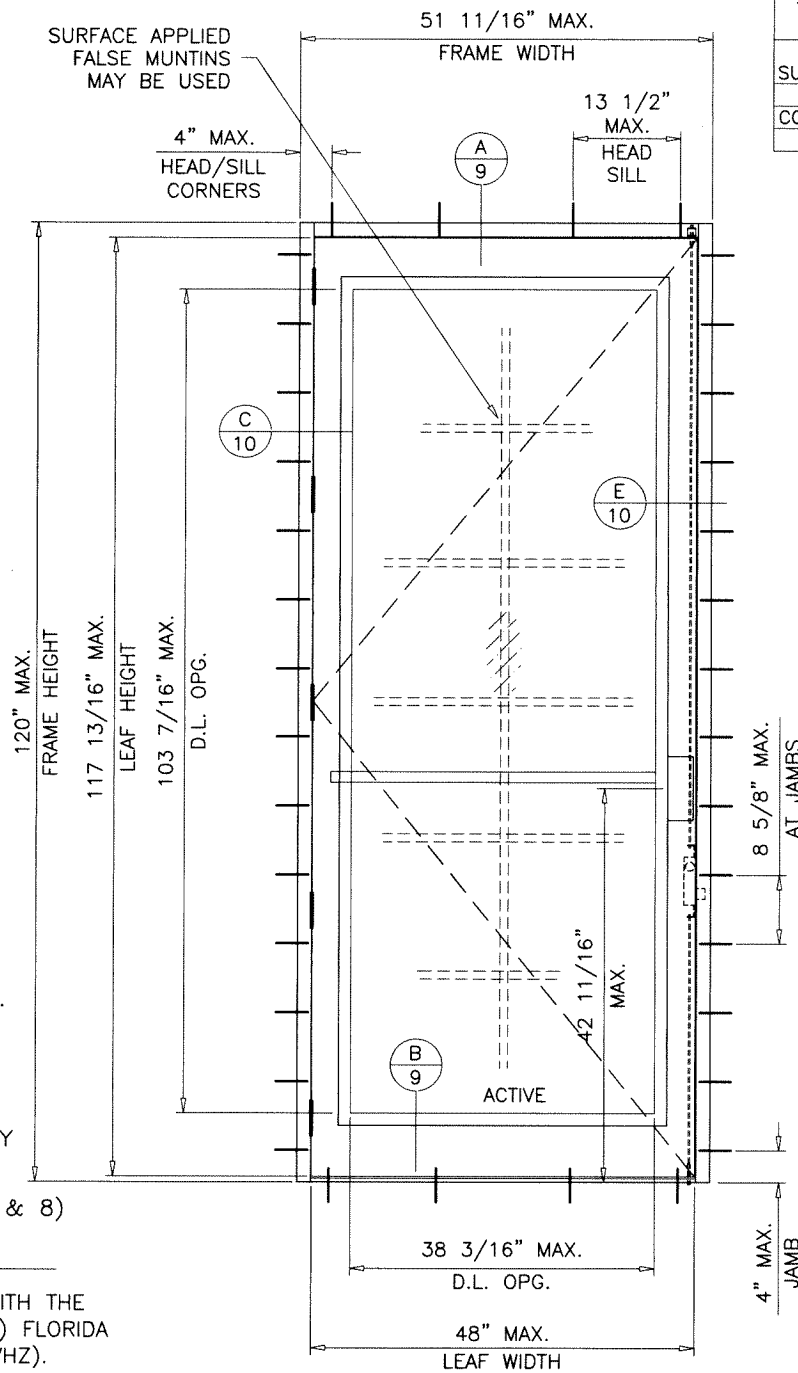
MATERIALS INCLUDING BUT NOT LIMITED TO STEEL/METAL SCREWS, THAT COME INTO CONTACT WITH OTHER DISSIMILAR MATERIALS SHALL MEET THE REQUIREMENTS OF THE 2020/2023 FLORIDA BLDG. CODE & ADOPTED STANDARDS.

THIS PRODUCT APPROVAL IS GENERIC AND DOES NOT PROVIDE INFORMATION FOR A SITE SPECIFIC PROJECT, I.E. LIFE SAFETY OF THIS PRODUCT, ADEQUACY OF STRUCTURE RECEIVING THIS PRODUCT AND SEALING AROUND OPENING FOR WATER INFILTRATION RESISTANCE ETC.

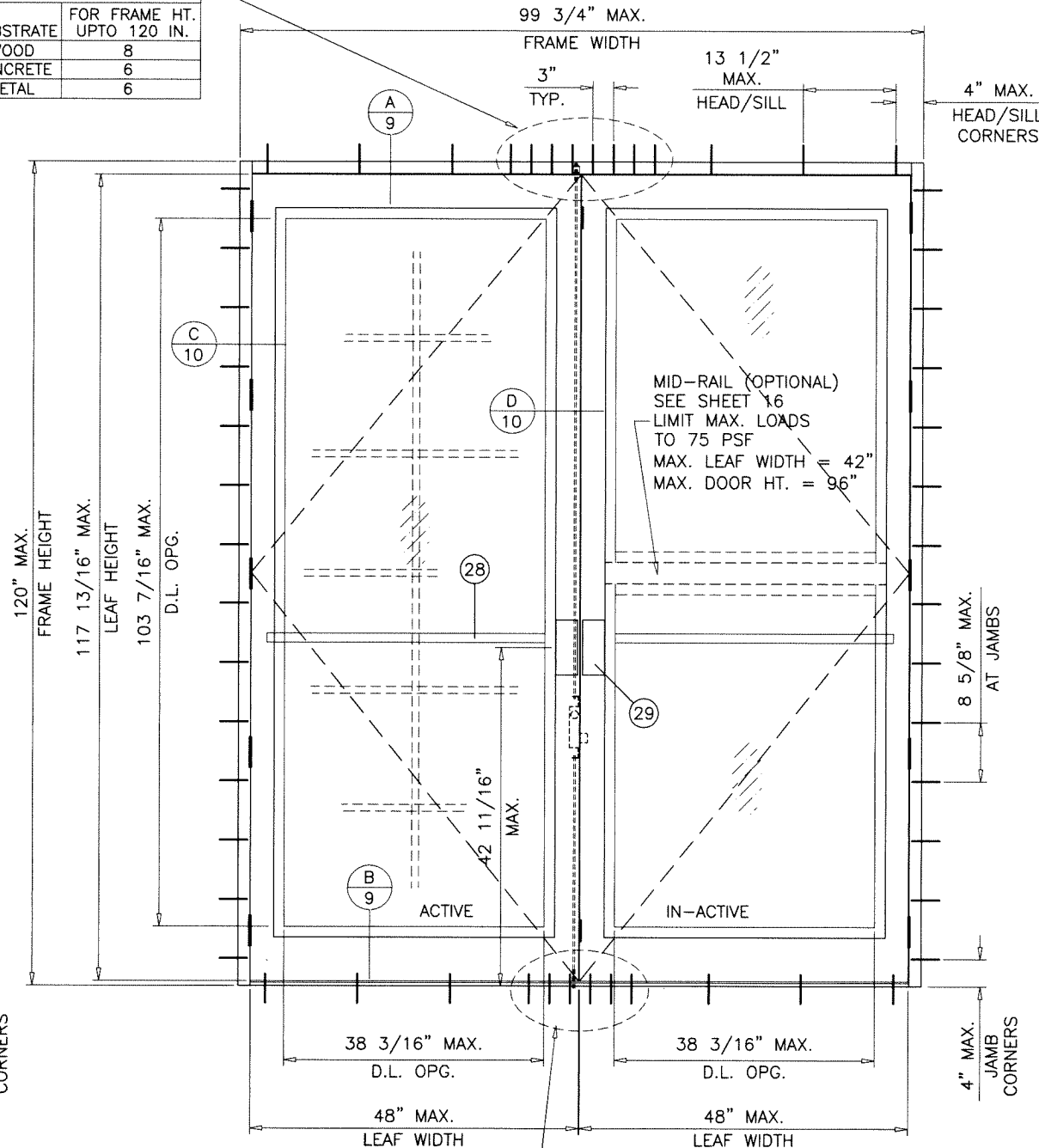
CONDITIONS NOT SHOWN IN THIS DRAWING ARE TO BE ANALYZED SEPARATELY, AND TO BE REVIEWED BY BUILDING OFFICIAL.

DESIGN LOADS SHOWN ARE BASED ON 'ALLOWABLE STRESS DESIGN (ASD)'.

MANUFACTURER'S LABEL SHALL BE LOCATED ON A READILY VISIBLE LOCATION IN ACCORDANCE WITH SECTION 1709.9.3 OF FLORIDA BUILDING CODE. LABELING TO COMPLY WITH SECTION 1709.9.2.



TOTAL NO. OF ANCHORS AT MTG. STILE ENDS	
SUBSTRATE	FOR FRAME HT. UPTO 120 IN.
WOOD	8
CONCRETE	6
METAL	6



TYPICAL ELEVATIONS

THESE DOORS ARE RATED FOR LARGE & SMALL MISSILE IMPACT. SHUTTERS ARE NOT REQUIRED.

FRAME WIDTH = DOOR OPNG. WIDTH + 3.500

LEAF HEIGHT = DOOR FRAME HEIGHT - 2.188"

LEAF WIDTH (XX DOORS) = (DOOR OPNG. WIDTH - .250)/2

LEAF WIDTH (X DOORS) = DOOR OPNG. WIDTH - .187

GLASS DLO HEIGHT = LEAF HEIGHT - 14.375

GLASS DLO WIDTH = LEAF WIDTH - 9.813

**LAMINATED GLASS
LARGE MISSILE IMPACT**

Sealed: 7/11/2023 FL #17811

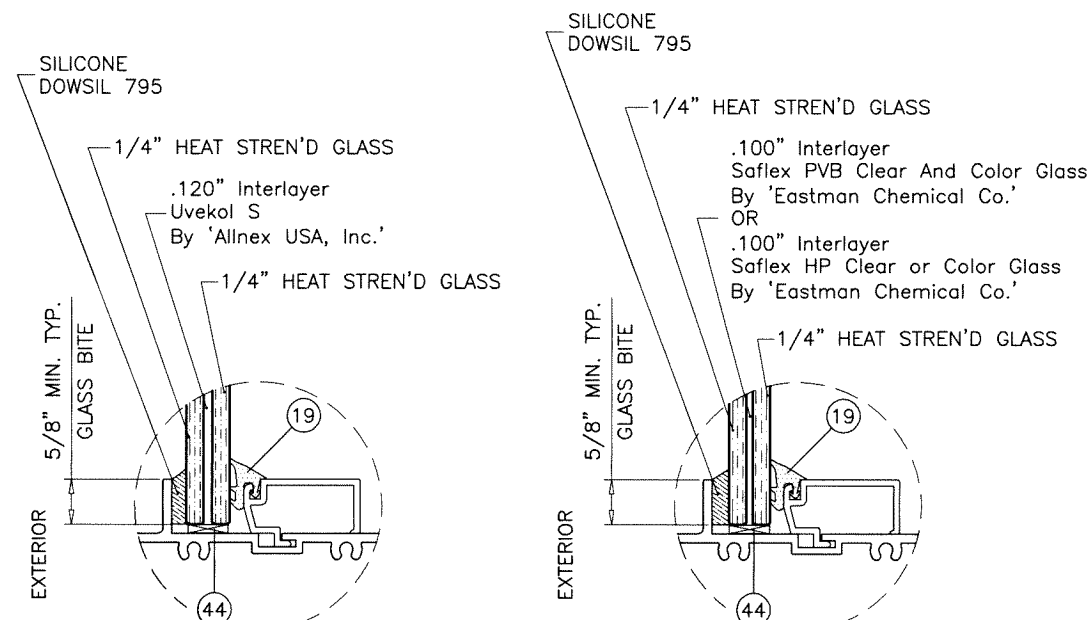
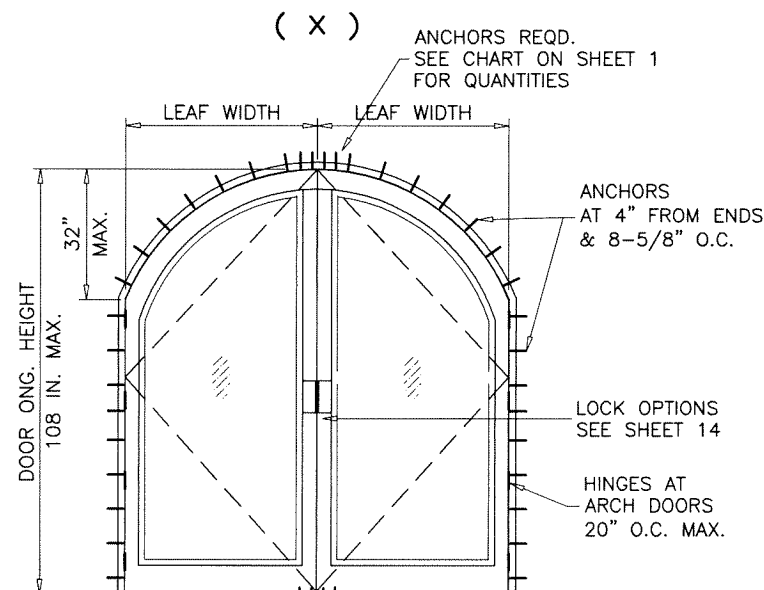
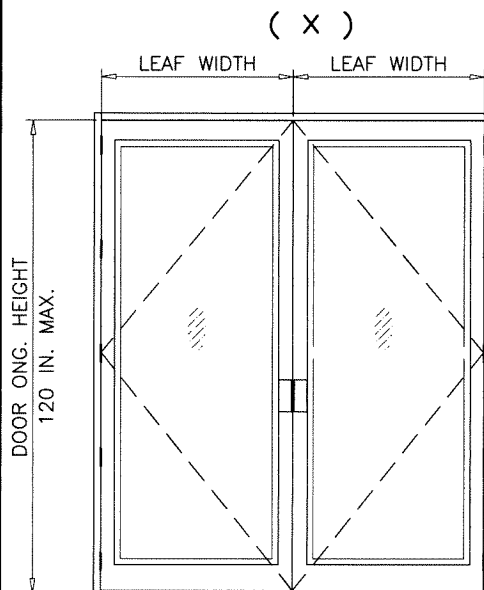
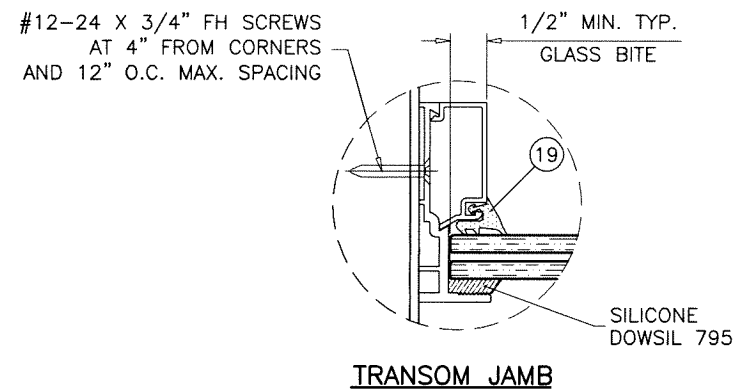
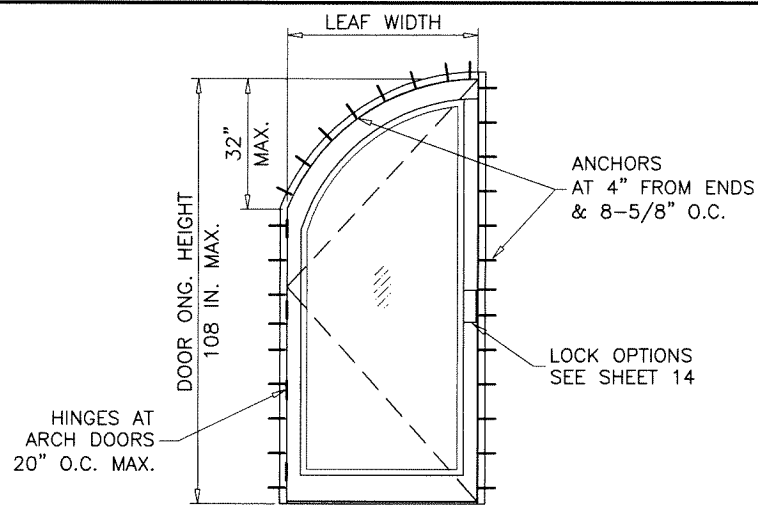
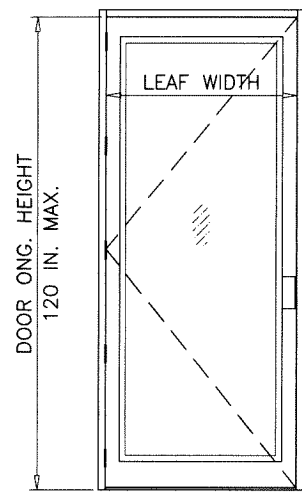
- A- CONTRACTOR TO BE RESPONSIBLE FOR THE SELECTION, PURCHASE AND INSTALLATION OF THIS PRODUCT BASED ON THIS PRODUCT EVALUATION PROVIDED HE/SHE DOES NOT DEVIATE FROM THE CONDITIONS DETAILED ON THIS DOCUMENT.
- B- THIS PRODUCT EVALUATION DOCUMENT WILL BE CONSIDERED INVALID IF ALTERED BY ANY MEANS.
- C- SITE SPECIFIC PROJECTS SHALL BE PREPARED BY A FLORIDA REGISTERED ENGINEER OR ARCHITECT WHICH WILL BECOME THE ENGINEER OF RECORD (E.O.R.) FOR THE PROJECT AND WHO WILL BE RESPONSIBLE FOR THE PROPER USE OF THE P.E.D. ENGINEER OF RECORD, ACTING AS A DELEGATED ENGINEER TO THE P.E.D. ENGINEER SHALL SUBMIT TO THIS LATTER THE SITE SPECIFIC DRAWINGS FOR REVIEW.
- D- THIS P.E.D. SHALL BEAR THE DATE AND ORIGINAL SEAL AND SIGNATURE OF THE PROFESSIONAL ENGINEER OF RECORD THAT PREPARED IT.



afc
AL-FAROOQ CORPORATION
 ENGINEERS & PRODUCT DEVELOPMENT
 9360 SUNSET DRIVE, SUITE 220
 MIAMI, FLORIDA 33173
 TEL. (305) 264-8100
 WWW.AFCENG.COM
 FBPE #3538
 COMP-ANL 22-04F-AAG

SERIES K2LM ALUM OUT-SWING ENTRANCE DOOR
Aldora Aluminum & Glass Products Inc.
 4250 Coral Ridge Drive, Suite 101
 Coral Springs, FL. 33065
 Tel. (954) 784-6900 Fax. (954) 784-6901

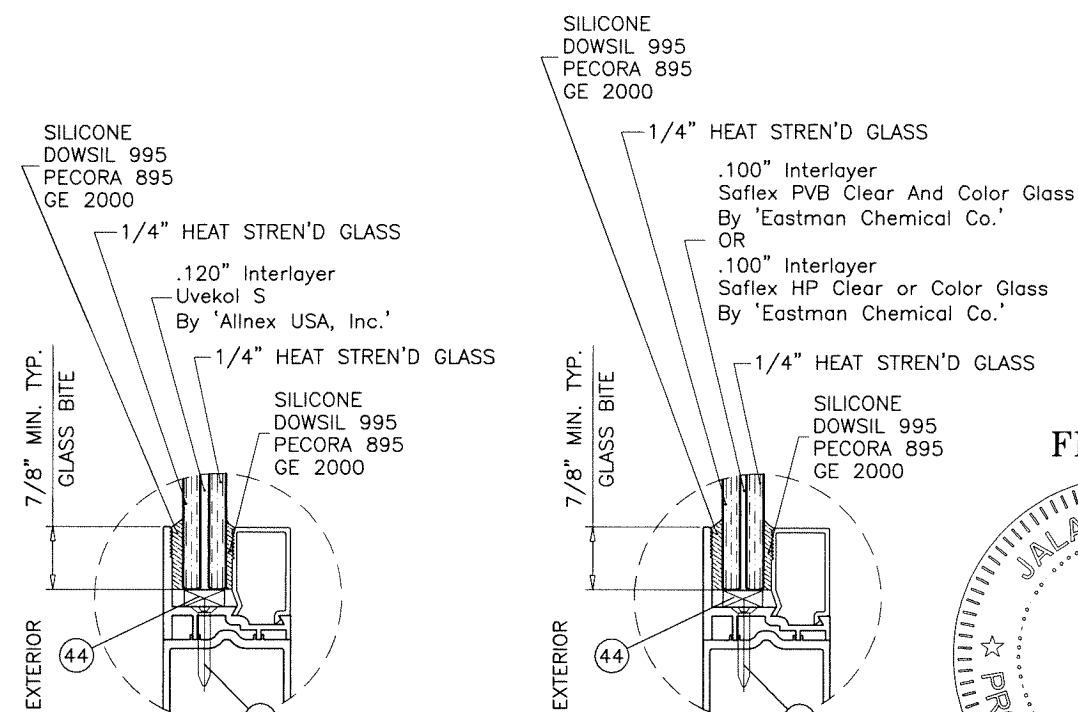
revisions:	no.	date	by	description
	A	07.01.23		UPDATED TO 2023 FBC
date:	01-25-22			
scale:	1/2"=1'-0"			
dr. by:	TARIQ			
chk. by:				
drawing no.	22-04F			
sheet	1 of 16			



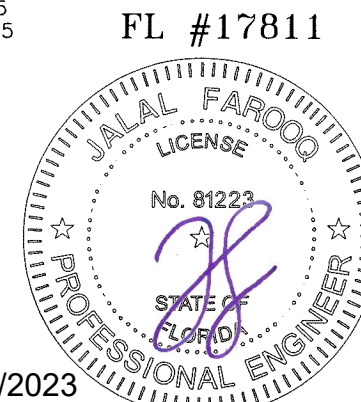
GLAZING DETAILS TRANSOM

SINGLE OR DOUBLE ENTRANCE DOORS W/O TRANSOM GLASS TYPES 'A' & 'B'			
NOMINAL DIMS.		DESIGN LOAD CAPACITY-PSF	
OPNG. HEIGHT INCHES	LEAF WIDTH INCHES	EXT.(+)	INT.(-)
80	30	100.0	120.0
	36	100.0	120.0
	42	100.0	120.0
	48	100.0	120.0
84	30	100.0	120.0
	36	100.0	120.0
	42	100.0	120.0
	48	100.0	120.0
96	30	100.0	120.0
	36	100.0	120.0
	42	100.0	120.0
	48	100.0	120.0
108	30	100.0	120.0
	36	100.0	120.0
	42	100.0	120.0
	48	100.0	120.0
120	30	100.0	100.0
	36	100.0	100.0
	42	100.0	100.0
	48	100.0	100.0

NOTE:
GLASS CAPACITIES ON THIS SHEET ARE
BASED ON ASTM E1300-09 (3 SEC. GUSTS)
AND FLORIDA BUILDING COMMISSION
DECLARATORY STATEMENT DCA05-DEC-219



GLAZING DETAILS DOOR LEAF

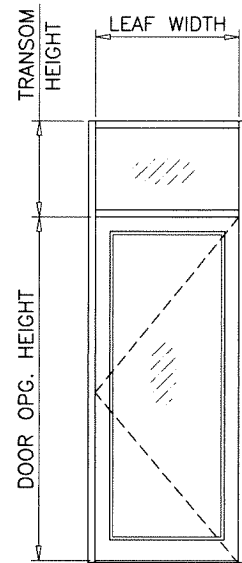


af c
AL-FAROOQ CORPORATION
ENGINEERS & PRODUCT DEVELOPMENT
9360 SUNSET DRIVE, SUITE 220
MIAMI, FLORIDA 33173
WWW.AFCENG.COM
TEL. (305) 264-8100
FDPPE #3538
COMP-ANL\22-04F-AAG

SERIES K2LM ALUM OUT-SWING ENTRANCE DOOR
Aldora Aluminum & Glass Products Inc.
4250 Coral Ridge Drive, Suite 101
Coral Springs, FL. 33065
Tel. (954) 784-6900 Fax. (954) 784-6901

revisions:	no	date	by	description
date:	01-25-22	scale:	3/8" = 1"	
dr. by:	TARIQ	chk. by:		
drawing no.	22-04F			
sheet	2 of 16			

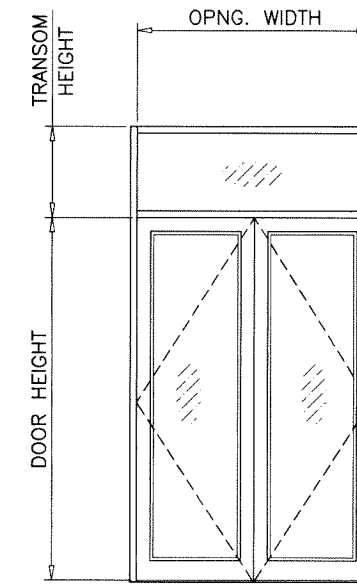
SINGLE ENTRANCE DOORS WITH TRANSOM					
DESIGN LOAD CAPACITY					
NOMINAL DIMS.			WITHOUT REINF.		
OPNG. WIDTH INCHES	DOOR HEIGHT INCHES	TRANSOM HEIGHT INCHES	EXT. (+)	INT. (-)	
48 MAX.	108 MAX.	60	100.0	120.0	



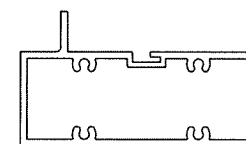
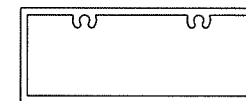
(O / X)

DOUBLE ENTRANCE DOORS WITH TRANSOM								
GLASS TYPES 'A' & 'B'								
DESIGN LOAD CAPACITY								
NOMINAL DIMS.			WITHOUT REINF.		WITH REINF.			
OPNG. WIDTH INCHES	DOOR HEIGHT INCHES	TRANSOM HEIGHT INCHES	EXT. (+)	INT. (-)	EXT. (+)	INT. (-)		
60	80	24	100.0	120.0	100.0	120.0		
		30	100.0	120.0	100.0	120.0		
		36	100.0	120.0	100.0	120.0		
		42	85.7	102.9	85.7	102.9		
		48	75.0	90.0	75.0	90.0		
72		80	54	66.7	80.0	66.7	80.0	
			24	100.0	103.0	100.0	120.0	
			30	97.4	97.4	100.0	120.0	
			36	92.3	92.3	100.0	120.0	
			42	85.7	87.8	85.7	102.9	
84	80		48	75.0	83.7	75.0	90.0	
			24	74.9	74.9	100.0	120.0	
			30	70.8	70.8	100.0	120.0	
96"			80	36	67.1	67.1	100.0	120.0
				24	56.8	56.8	100.0	110.0
		30		53.7	53.7	100.0	104.0	
60		84		36	50.9	50.9	98.6	98.6
				24	100.0	120.0	100.0	120.0
				30	100.0	120.0	100.0	120.0
				36	100.0	120.0	100.0	120.0
	42			85.7	102.9	85.7	102.9	
72	84			48	75.0	90.0	75.0	90.0
				54	66.7	80.0	66.7	80.0
			24	99.2	99.2	100.0	120.0	
			30	94.0	94.0	100.0	120.0	
84			84	36	89.3	89.3	100.0	120.0
		42		85.0	85.0	85.7	102.9	
		48		75.0	81.1	75.0	90.0	
96"		84		24	72.1	72.1	100.0	120.0
				30	68.3	68.3	100.0	120.0
				36	64.9	64.9	100.0	120.0
60	96			24	54.7	54.7	100.0	105.9
				30	51.8	51.8	100.0	100.4
				36	49.2	49.2	95.3	95.3
				24	100.0	120.0	100.0	120.0
72			96	30	100.0	120.0	100.0	120.0
				36	100.0	118.2	100.0	120.0
				42	85.7	102.9	85.7	102.9
		48		75.0	90.0	75.0	90.0	
84		96		24	89.3	89.3	100.0	120.0
				30	85.0	85.0	100.0	120.0
	36			81.1	81.1	100.0	120.0	
	42			77.6	77.6	85.7	102.9	
96"	96			48	74.4	74.4	75.0	90.0
				24	64.9	64.9	100.0	120.0
			30	61.8	61.8	100.0	118.6	
60			96	36	59.0	59.0	100.0	113.2
				24	49.2	49.2	95.3	95.3
				30	46.9	46.9	90.8	90.8
96"		96		36	44.7	44.7	86.7	86.7

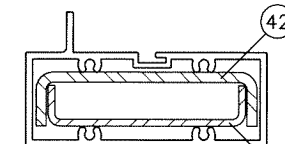
DOUBLE ENTRANCE DOORS WITH TRANSOM								
GLASS TYPES 'A' & 'B'								
DESIGN LOAD CAPACITY								
NOMINAL DIMS.			WITHOUT REINF.		WITH REINF.			
OPNG. WIDTH INCHES	DOOR HEIGHT INCHES	TRANSOM HEIGHT INCHES	EXT. (+)	INT. (-)	EXT. (+)	INT. (-)		
60	108	24	100.0	118.2	100.0	120.0		
		30	100.0	113.0	100.0	120.0		
		36	100.0	108.3	100.0	120.0		
		42	-	-	85.7	102.9		
72		108	24	81.1	81.1	100.0	120.0	
			30	77.6	77.6	100.0	120.0	
			36	74.4	74.4	100.0	120.0	
84			108	24	59.0	59.0	100.0	113.2
				30	56.4	56.4	100.0	108.3
				36	54.1	54.1	100.0	103.8
96"	108			24	44.7	44.7	86.7	86.7
				30	42.8	42.8	82.5	82.9
				36	41.0	41.0	79.5	79.5



(O / XX)



TRANSOM WITHOUT REINF.



TRANSOM WITH REINF.

NOTE:
GLASS CAPACITIES ON THIS SHEET ARE
BASED ON ASTM E1300-09 (3 SEC. GUSTS)
AND FLORIDA BUILDING COMMISSION
DECLARATORY STATEMENT DCA05-DEC-219

Sealed: 7/11/2023



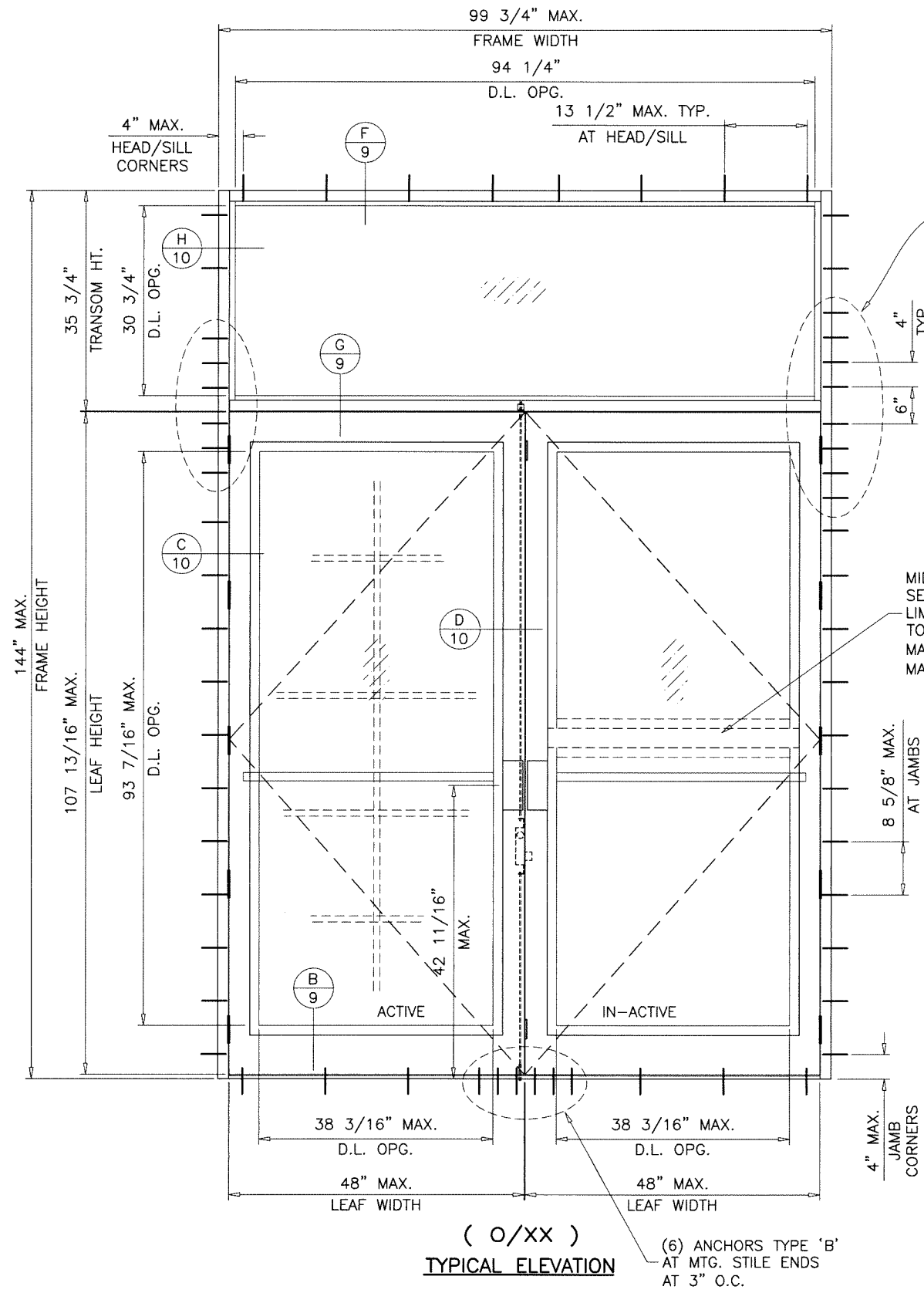
FL #17811

af c
AL-FAROOQ CORPORATION
ENGINEERS & PRODUCT DEVELOPMENT
9360 SUNSET DRIVE, SUITE 220
MIAMI, FLORIDA 33173
WWW.AFCENG.COM
TEL. (305) 264-8100
FBPE #8538
COMP-ANL\22-04F-AAG

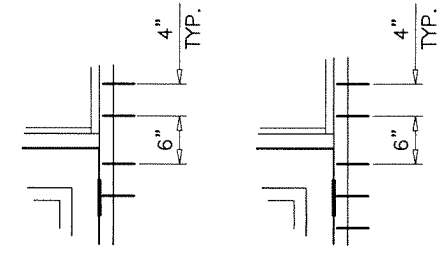
SERIES K2LM ALUM OUT-SWING ENTRANCE DOOR
Aldora Aluminum & Glass Products Inc.
4250 Coral Ridge Drive, Suite 101
Coral Springs, FL. 33065
Tel. (954) 784-6900 Fax. (954) 784-6901

revisions:	no	date	by	description

date: 01-25-22
scale: -
dr. by: TARIQ
chk. by:
drawing no.
22-04F
sheet 3 of 16



SUBSTRATE	NO. OF ANCHORS AT TRANSOM ENDS	
	WITHOUT REINF.	WITH REINF.
WOOD	6	8
MASONRY	6	8
CONCRETE	4	4
METAL	4	5



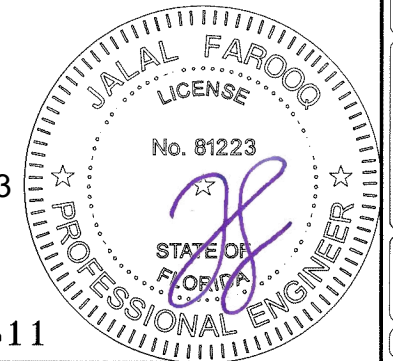
MID-RAIL (OPTIONAL)
SEE SHEET 16
LIMIT MAX. LOADS
TO 75 PSF
MAX. LEAF WIDTH = 42"
MAX. DOOR HT. = 96"

DLO WIDTH (TRANSOM) = DOOR FRAME WIDTH - 5.50"
DLO HEIGHT (TRANSOM) = TRANSOM HEIGHT - 5.00"

(O/XX)
TYPICAL ELEVATION
(6) ANCHORS TYPE 'B'
AT MTG. STILE ENDS
AT 3" O.C.

NOTE:
FOR DOORS CAPACITY SEE SHEET 2.
FOR HORIZONTAL MULLION (TRANSOM BAR) CAPACITY SEE SHEET 3.
LOWER VALUES FROM DOORS OR HORIZONTAL MULLION (TRANSOM BAR) CHART
WILL APPLY TO ENTIRE SYSTEM.

Sealed: 7/11/2023



FL #17811

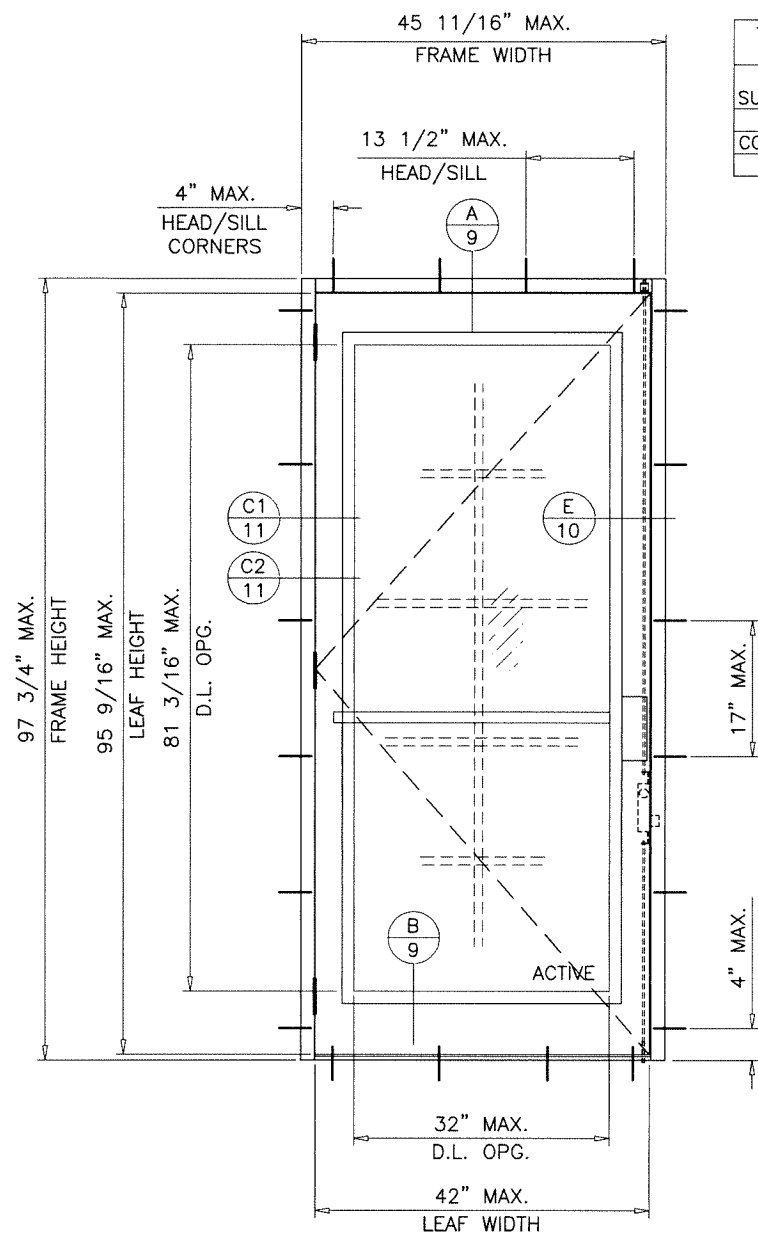
af c
AL-FAROOQ CORPORATION
ENGINEERS & PRODUCT DEVELOPMENT
9360 SUNSET DRIVE, SUITE 220
MIAMI, FLORIDA 33173
WWW.AFCENG.COM
TEL. (305) 264-8100
FBPE #3538
COMP-ANL\22-04F-AAG

SERIES K2LM ALUM OUT-SWING ENTRANCE DOOR
Aldora Aluminum & Glass Products Inc.
4250 Coral Ridge Drive, Suite 101
Coral Springs, FL. 33065
Tel. (954) 784-6900 Fax. (954) 784-6901

revisions:	no	date	by	description

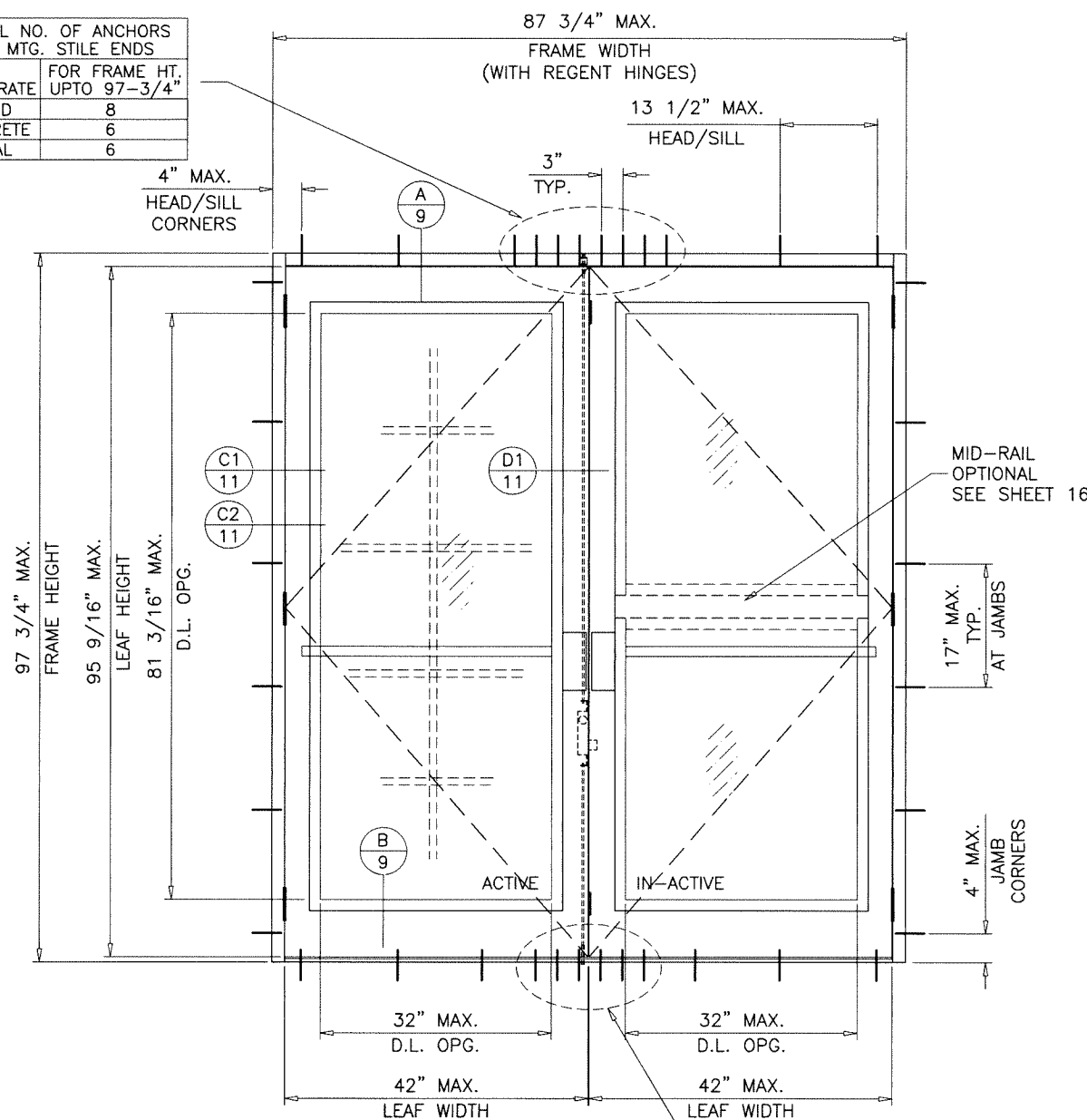
date: 01-25-22
scale: 1/2"=1'-0"
dr. by: TARIQ
chk. by:

drawing no.
22-04F
sheet 4 of 16



(X)
TYPICAL ELEVATION

TOTAL NO. OF ANCHORS AT MTG. STILE ENDS FOR FRAME HT. UPTO 97-3/4"		
SUBSTRATE	WOOD	8
	CONCRETE	6
	METAL	6



(XX)
TYPICAL ELEVATION

(6) ANCHORS TYPE 'B' AT MTG. STILE ENDS AT 3" O.C.

GLASS TYPE 'C' ONLY
MAXIMUM DESIGN LOAD RATING = + 75.0 PSF
 (FOR SIZES SHOWN ON THIS SHEET ONLY) - 75.0 PSF

FRAME WIDTH = DOOR OPNG. WIDTH + 3.500

LEAF HEIGHT = DOOR FRAME HEIGHT - 2.188"

LEAF WIDTH (XX DOORS) = (DOOR OPNG. WIDTH - .250)/2 REGENT HINGES

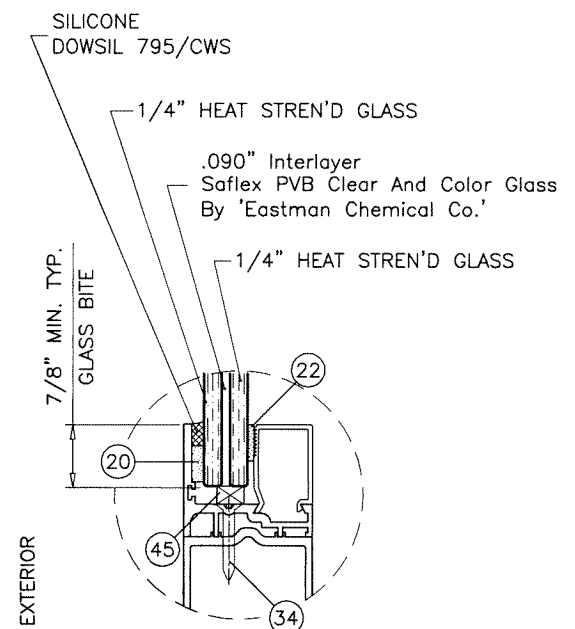
= (DOOR OPNG. WIDTH - .750)/2 ALUMINUM HINGES

LEAF WIDTH (X DOORS) = DOOR OPNG. WIDTH - .187 REGENT HINGES

= DOOR OPNG. WIDTH - .437 ALUMINUM HINGES

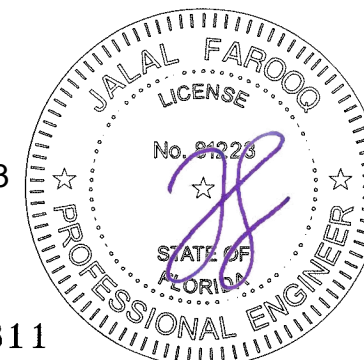
GLASS DLO HEIGHT = LEAF HEIGHT - 14.375

GLASS DLO WIDTH = LEAF WIDTH - 10.000



GLASS TYPE 'C'
GLAZING DETAIL DOOR LEAF

Sealed: 7/11/2023



FL #17811

af c
AL-FAROOQ CORPORATION
 ENGINEERS & PRODUCT DEVELOPMENT
 9360 SUNSET DRIVE, SUITE 220
 MIAMI, FLORIDA 33173
 TEL. (305) 264-8100
 WWW.AFCENG.COM
 FBPE #9598
 COMP-ANL\22-04F-AAG

SERIES K2LM ALUM OUT-SWING ENTRANCE DOOR

Aldora Aluminum & Glass Products Inc.

4250 Coral Ridge Drive, Suite 101
 Coral Springs, FL. 33065

Tel. (954) 784-6900 Fax. (954) 784-6901

revisions:
 no date by description

date: 01-25-22

scale: 1/2"=1'-0"

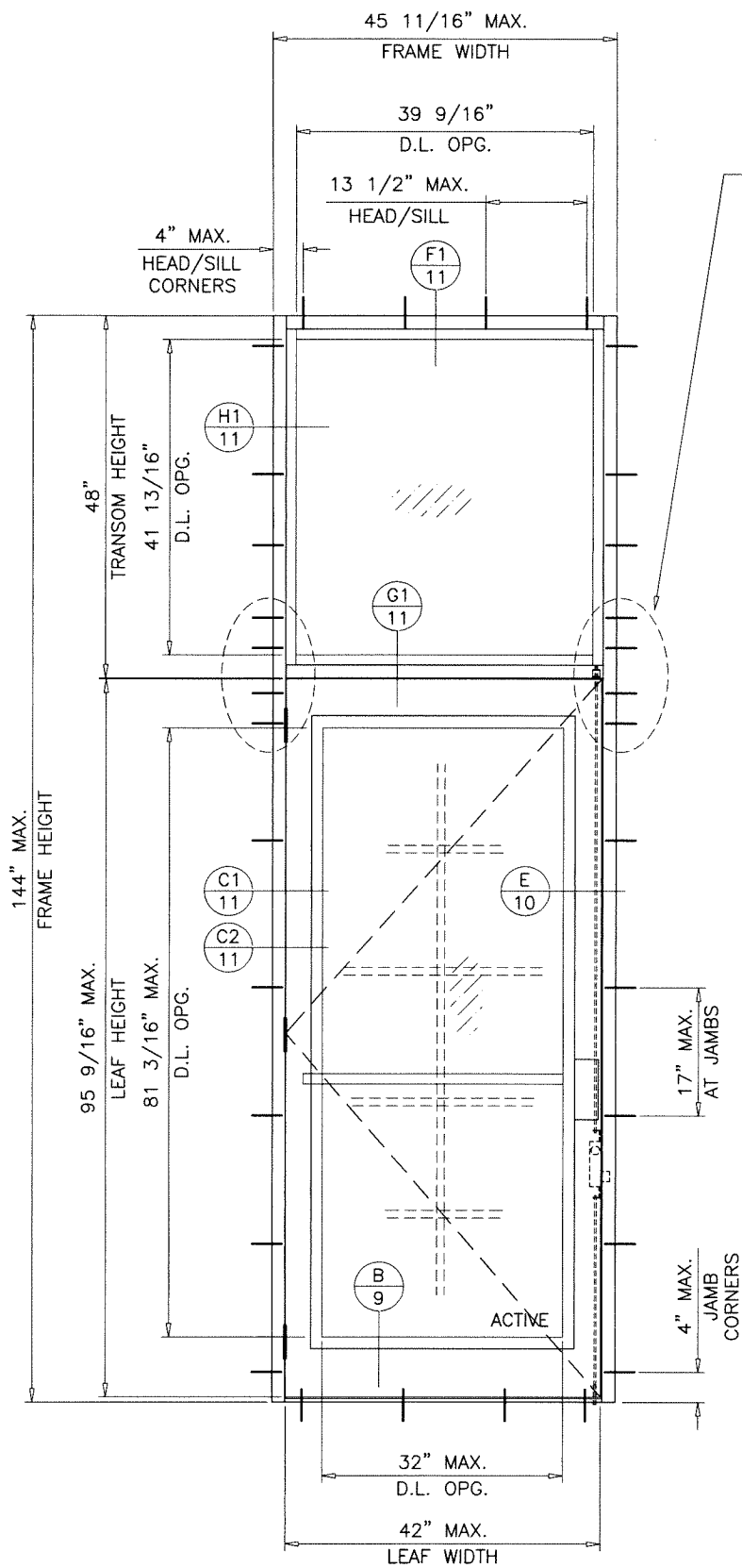
dr. by: TARIQ

chk. by:

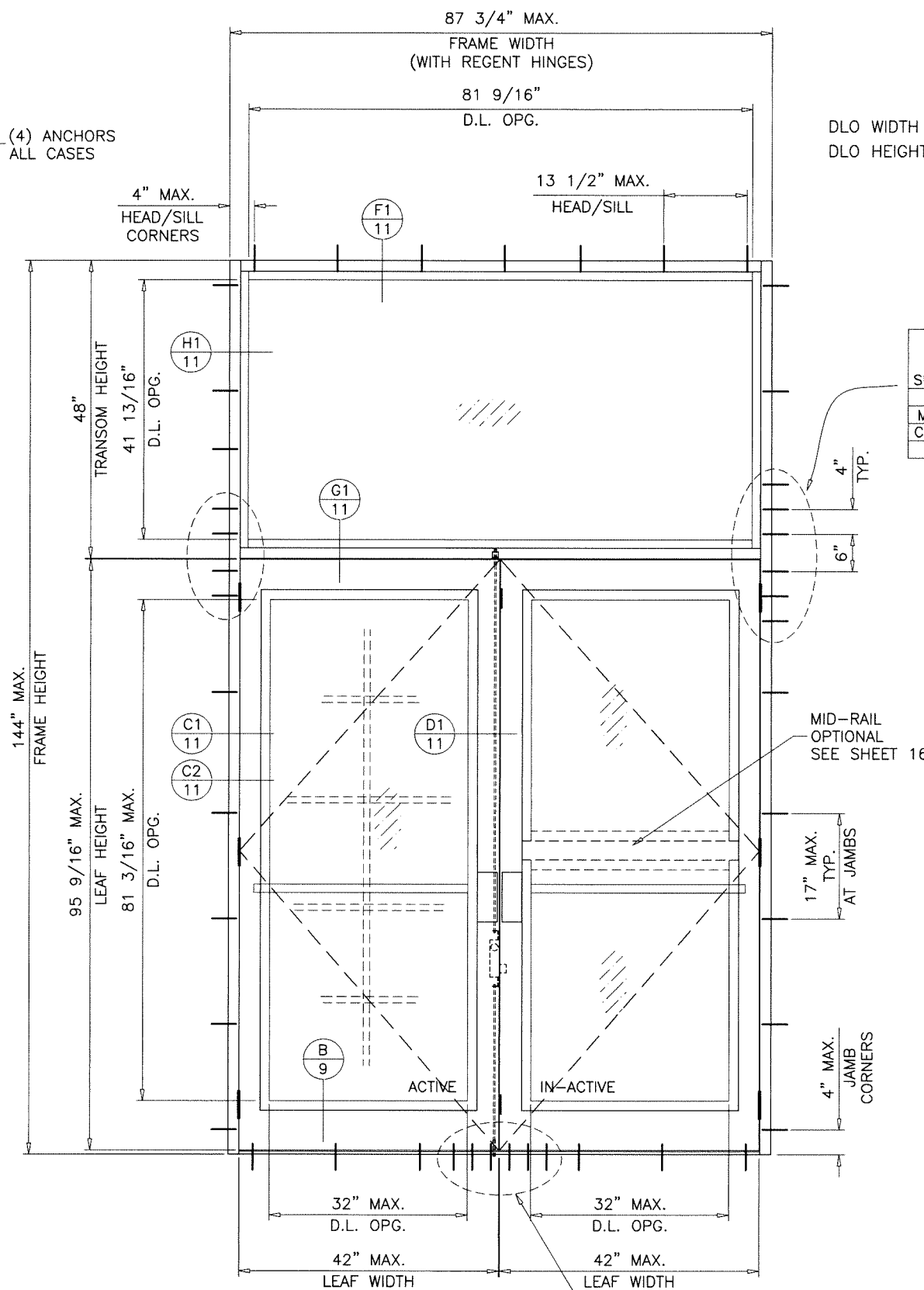
drawing no.

22-04F

sheet 5 of 16



(O/X)
TYPICAL ELEVATION



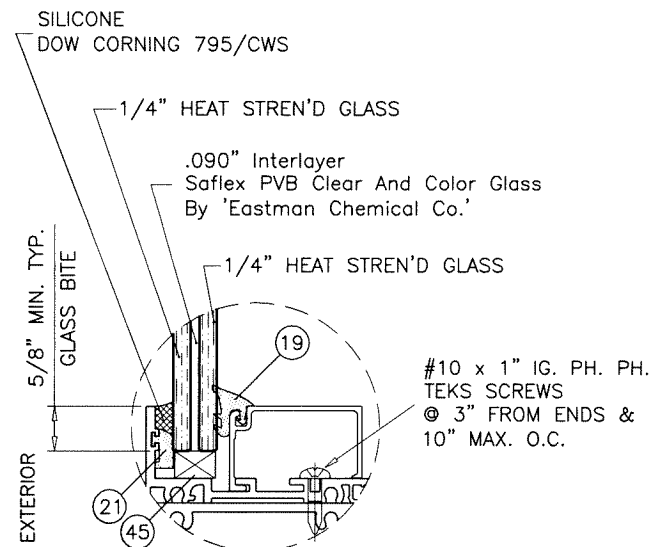
(O/XX)
TYPICAL ELEVATION

NOTE:
FOR DOORS CAPACITY SEE SHEET 5.
FOR HORIZONTAL MULLION (TRANSOM BAR) CAPACITY SEE CHART ABOVE.
LOWER VALUES FROM DOORS OR HORIZONTAL MULLION (TRANSOM BAR) CHART
WILL APPLY TO ENTIRE SYSTEM.

DLO WIDTH (TRANSOM) = DOOR FRAME WIDTH - 6.125"
DLO HEIGHT (TRANSOM) = TRANSOM HEIGHT - 6.125"

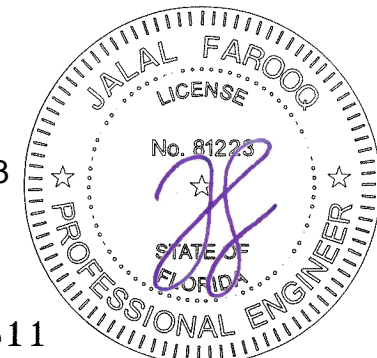
SUBSTRATE	NO. OF ANCHORS AT TRANSOM ENDS WITHOUT REINF.
WOOD	6
MASONRY	6
CONCRETE	4
METAL	4

GLASS TYPE 'C' ONLY				
DOUBLE ENTRANCE DOORS WITH TRANSOM				
DESIGN LOAD CAPACITY				
NOMINAL DIMS.			WITHOUT REINF.	
OPNG. WIDTH INCHES	DOOR HEIGHT INCHES	TRANSOM HEIGHT INCHES	EXT. (+)	INT. (-)
82	96	42	70.5	70.5
		48	67.6	67.6
84-1/4	96	42	66.7	66.7
		48	63.9	63.9



GLASS TYPE 'C'
GLAZING DETAIL TRANSOM

Sealed: 7/11/2023



FL #17811

af c
AL-FAROOQ CORPORATION
ENGINEERS & PRODUCT DEVELOPMENT
9360 SUNSET DRIVE, SUITE 220
MIAMI, FLORIDA 33173
WWW.AFCENG.COM
TEL. (305) 264-8100
FBPE #9538
COMP-ANL\22-04F-AAG

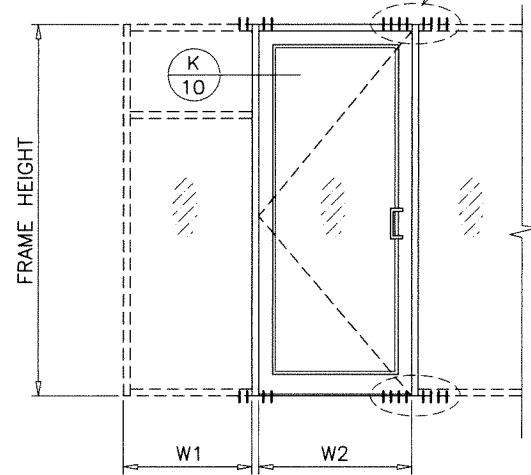
SERIES K2LM ALUM OUT-SWING ENTRANCE DOOR
Aldora Aluminum & Glass Products Inc.
4250 Coral Ridge Drive, Suite 101
Coral Springs, FL. 33065
Tel. (954) 784-6900 Fax. (954) 784-6901

revisions:	no	date	by	description

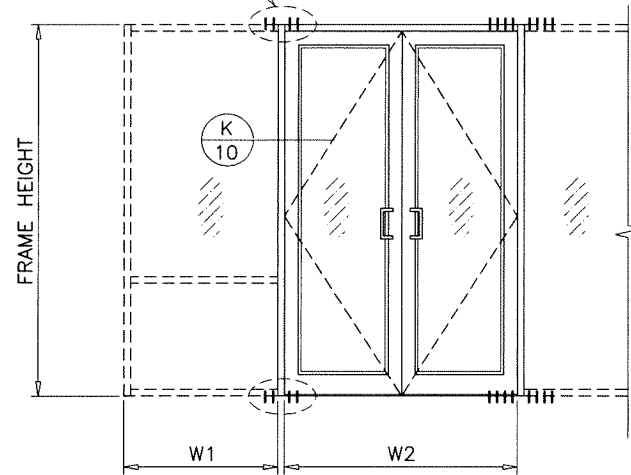
date: 01-25-22
scale: 1/2"=1'-0"
dr. by: TARIQ
chk. by:
drawing no.
22-04F
sheet 6 of 16

DOOR MULLION LOAD CAPACITY			
NOMINAL DIMS.		LOADS-PSF	
WIDTH (W)	FRAME HEIGHT	EXT.(+) & INT.(-)	
24"	80"	100.0	
30"		100.0	
36"		100.0	
42"		100.0	
48"		100.0	
54"		100.0	
60"	100.0		
24"	84"	100.0	
30"		100.0	
36"		100.0	
42"		100.0	
48"		100.0	
54"		100.0	
60"	100.0		
24"	90"	100.0	
30"		100.0	
36"		100.0	
42"		100.0	
48"		100.0	
54"		100.0	
24"	96"	100.0	
30"		100.0	
36"		100.0	
42"		100.0	
48"		100.0	
24"		102"	100.0
30"	100.0		
36"	100.0		
42"	100.0		
48"	100.0		
24"	108"		100.0
30"		100.0	
36"		100.0	
42"		100.0	
24"		114"	100.0
30"			100.0
36"	100.0		
42"	100.0		
24"	120"		100.0
30"			100.0
36"		100.0	
42"		100.0	

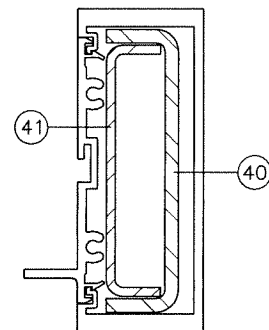
SUBSTRATE	NO. OF ANCHORS AT DOOR MULLION
WOOD	8
CONCRETE	6
METAL	4



$$\text{WIDTH (W)} = \frac{W1 + W2}{2}$$



$$\text{WIDTH (W)} = \frac{W1}{2} + \frac{W2}{4}$$



DOOR MULLION

a f c
AL-FAROOQ CORPORATION
 ENGINEERS & PRODUCT DEVELOPMENT
 9360 SUNSET DRIVE, SUITE 220
 MIAMI, FLORIDA 33173
 TEL. (305) 264-8100 WWW.AFCENG.COM
 FBPE #3538

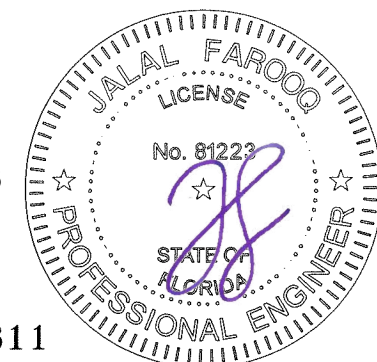
SERIES K2LM ALUM OUT-SWING ENTRANCE DOOR
Aldora Aluminum & Glass Products Inc.
 4250 Coral Ridge Drive, Suite 101
 Coral Springs, FL. 33065
 Tel. (954) 784-6900 Fax. (954) 784-6901

revisions:	no	date	by	description

date: 01-25-22
 scale: -
 dr. by: TARIQ
 chk. by:

drawing no.
22-04F
 sheet 7 of 16

Sealed: 7/11/2023



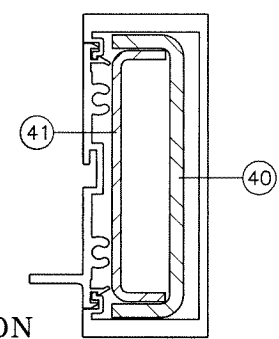
FL #17811

DOOR MULLION LOAD CAPACITY				
NOMINAL DIMS.				LOADS-PSF
DOOR WIDTH W1	SIDELITE WIDTH W2	DOOR HEIGHT A	FRAME SPAN L	EXT. (+) INT. (-)
60"	30"	80"	108"	100.0
	33"			100.0
	39"			100.0
	42"			100.0
72"	30"			100.0
	33"			100.0
	39"			100.0
	42"			100.0
84"	30"			100.0
	33"			100.0
	39"			97.6
	42"			95.0
96"	30"	96.2		
	33"	93.7		
	39"	89.2		
	42"	87.1		
60"	30"	80"	114"	100.0
	33"			100.0
	39"			100.0
	42"			100.0
72"	30"			100.0
	33"			100.0
	39"			94.3
	42"			91.7
84"	30"			92.6
	33"			90.0
	39"			85.4
	42"			83.2
96"	30"	83.9		
	33"	81.8		
	39"	78.0		
	30"	100.0		
60"	33"	80"	120"	99.8
	39"			93.6
	42"			90.7
	30"			91.3
72"	33"			88.6
	39"			83.7
	42"			81.4
	30"			81.9
84"	33"			79.7
	39"			75.6
	42"			73.8
	30"			74.2
96"	33"	72.4		

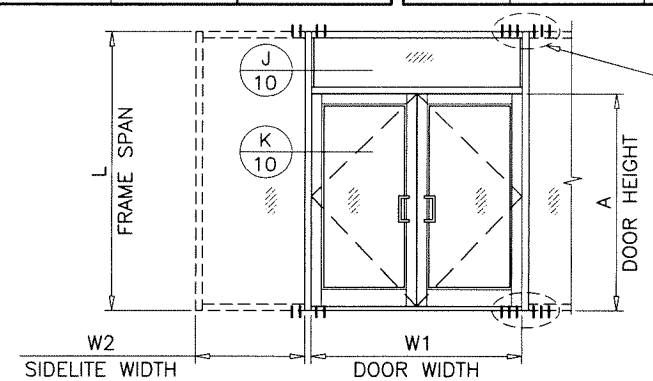
DOOR MULLION LOAD CAPACITY				
NOMINAL DIMS.				LOADS-PSF
DOOR WIDTH W1	SIDELITE WIDTH W2	DOOR HEIGHT A	FRAME SPAN L	EXT. (+) INT. (-)
60"	30"	84"	108"	100.0
	33"			100.0
	39"			100.0
	42"			100.0
72"	30"			100.0
	33"			100.0
	39"			100.0
	42"			100.0
84"	30"			100.0
	33"			100.0
	39"			100.0
	42"			97.8
96"	30"	99.4		
	33"	96.8		
	39"	91.9		
	42"	89.7		
60"	30"	84"	114"	100.0
	33"			100.0
	39"			100.0
	42"			100.0
72"	30"			100.0
	33"			100.0
	39"			96.4
	42"			93.6
84"	30"			94.8
	33"			92.2
	39"			87.3
	42"			85.1
96"	30"	86.1		
	33"	83.9		
	39"	79.8		
	30"	100.0		
60"	33"	84"	120"	100.0
	39"			95.0
	42"			92.1
	30"			93.0
72"	33"			90.2
	39"			85.1
	42"			82.7
	30"			83.4
84"	33"			81.2
	39"			77.0
	42"			75.0
	30"			75.7
96"	33"	73.8		

DOOR MULLION LOAD CAPACITY				
NOMINAL DIMS.				LOADS-PSF
DOOR WIDTH W1	SIDELITE WIDTH W2	DOOR HEIGHT A	FRAME SPAN L	EXT. (+) INT. (-)
60"	30"	96"	108"	100.0
	33"			100.0
	39"			100.0
	42"			100.0
72"	30"			100.0
	33"			100.0
	39"			100.0
	42"			100.0
84"	30"			100.0
	33"			100.0
	39"			100.0
	42"			100.0
96"	30"	100.0		
	33"	100.0		
	39"	100.0		
	42"	100.0		
60"	30"	96"	114"	100.0
	33"			100.0
	39"			100.0
	42"			100.0
72"	30"			100.0
	33"			100.0
	39"			100.0
	42"			100.0
84"	30"			100.0
	33"			100.0
	39"			96.0
	42"			93.3
96"	30"	95.8		
	33"	93.1		
	39"	88.1		
	30"	100.0		
60"	33"	96"	120"	100.0
	39"			100.0
	42"			98.1
	30"			100.0
72"	33"			97.3
	39"			91.3
	42"			88.6
	30"			90.5
84"	33"			87.9
	39"			83.0
	42"			80.7
	30"			82.3
96"	33"	80.1		

DOOR MULLION LOAD CAPACITY				
NOMINAL DIMS.				LOADS-PSF
DOOR WIDTH W1	SIDELITE WIDTH W2	DOOR HEIGHT A	FRAME SPAN L	EXT. (+) INT. (-)
60"	30"	108"	114"	100.0
	33"			100.0
	39"			100.0
	42"			100.0
72"	30"			100.0
	33"			100.0
	39"			100.0
	42"			100.0
84"	30"			100.0
	33"			100.0
	39"			100.0
	42"			100.0
96"	30"	100.0		
	33"	100.0		
	39"	100.0		
	42"	100.0		
60"	30"	108"	120"	100.0
	33"			100.0
	39"			100.0
	42"			100.0
72"	30"			100.0
	33"			100.0
	39"			98.4
	42"			100.0
84"	30"			99.3
	33"			93.1
	39"			90.3
	42"			93.9
96"	30"	91.1		

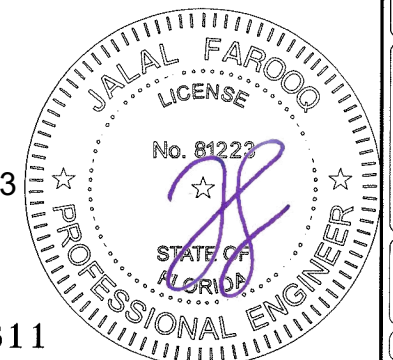


DOOR MULLION



SUBSTRATE	NO. OF ANCHORS AT DOOR MULLION
WOOD	12
CONCRETE	8
METAL	6

Sealed: 7/11/2023

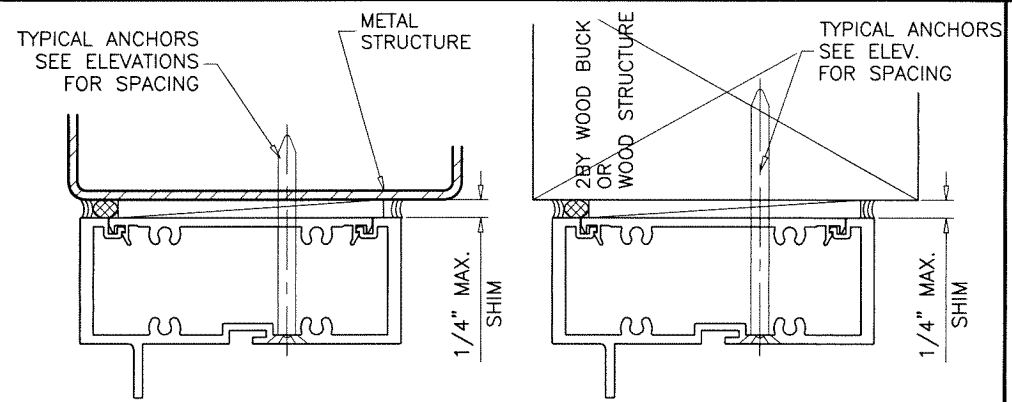
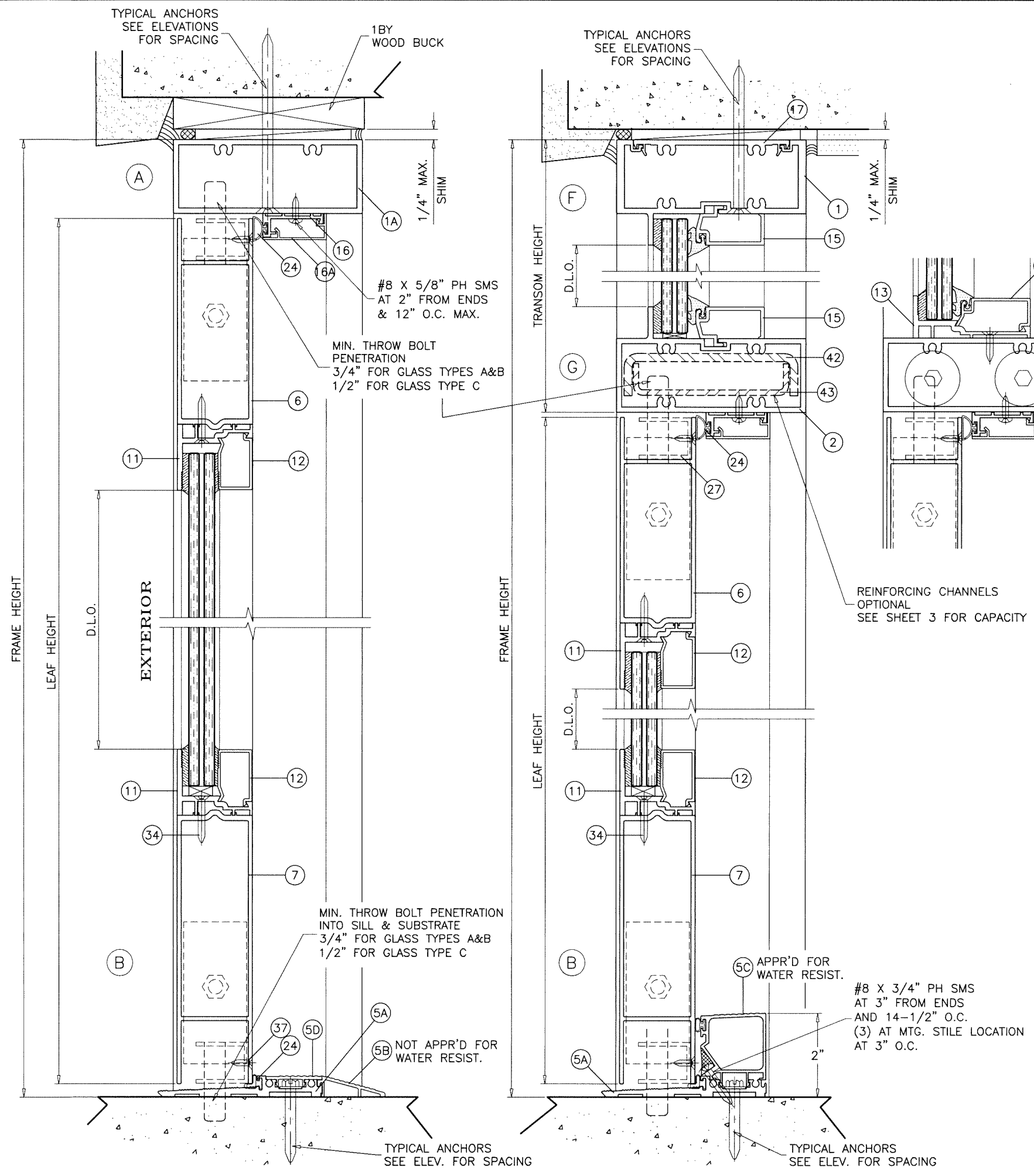


FL #17811

af c
AL-FAROOQ CORPORATION
 ENGINEERS & PRODUCT DEVELOPMENT
 9360 SUNSET DRIVE, SUITE 220
 MIAMI, FLORIDA 33173
 TEL. (305) 264-8100 WWW.AFCENG.COM
 FBPE #3538
 COMP-ANL V22-04F-AAG

SERIES K2LM ALUM OUT-SWING ENTRANCE DOOR
Aldora Aluminum & Glass Products Inc.
 4250 Coral Ridge Drive, Suite 101
 Coral Springs, FL 33065
 Tel. (954) 784-6900 Fax. (954) 784-6901

revisions:
 no. date by description
 date: 01-25-22
 scale: -
 dr. by: TARIQ
 chk. by:
 drawing no.
22-04F
 sheet 8 of 16



1BY OR 2BY WOOD BUCKS AND METAL STRUCTURE NOT BY 'ALDORA ALUMINUM AND GLASS PRODUCTS' MUST SUSTAIN LOADS IMPOSED BY GLAZING SYSTEM AND TRANSFER THEM TO THE BUILDING STRUCTURE.

- TYPICAL ANCHORS:** SEE ELEV. FOR SPACING
- TYPE 'A' - 1/4" DIA. ULTRACON+ BY 'DEWALT'** (Fu=164 KSI, Fy=148 KSI)
 INTO 2BY WOOD BUCKS OR WOOD STRUCTURES
 1-1/2" MIN. PENETRATION INTO WOOD (HEAD/JAMBS)
 THRU 1BY BUCKS INTO CONC. OR BLOCKS
 1-1/4" MIN. EMBED INTO CONCRETE (HEAD/JAMBS)
 1-1/4" MIN. EMBED INTO BLOCKS (JAMBS)
 DIRECTLY INTO CONCRETE OR BLOCKS
 1-1/4" MIN. EMBED INTO CONC. OR BLOCKS (JAMBS)
- TYPE 'B' - 1/4" DIA. ULTRACON+ BY 'DEWALT'** (Fu=164 KSI, Fy=148 KSI)
 DIRECTLY INTO CONCRETE
 1-3/4" MIN. EMBED INTO CONCRETE (HEAD/SILL)
- TYPE 'C' - #14 SMS OR SELF DRILLING SCREWS** (GRADE 2 CRS)
 INTO F.B.C. APPROVED MULLIONS
 OR
 INTO METAL STRUCTURES (HEAD/JAMBS)
 (3) THREADS MIN. PENETRATION BEYOND SUBSTRATE
 ALUMINUM: 1/8" THK. MIN. (6063-T5 MIN.)
 STEEL: 1/8" THK. MIN. (Fy = 36 KSI MIN.)
 (STEEL IN CONTACT WITH ALUMINUM TO BE PLATED OR PAINTED)

TYPICAL EDGE DISTANCE
 INTO CONCRETE AND MASONRY = 2-1/2" MIN.
 INTO WOOD STRUCTURE = 1" MIN.
 INTO METAL STRUCTURE = 3/4" MIN.

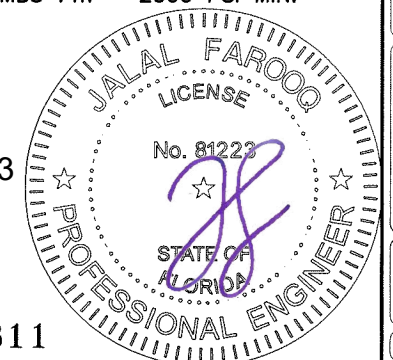
MIN. CL TO CL SPACING (OR AS SHOWN)
 INTO CONCRETE AND MASONRY = 3" MIN.
 INTO WOOD STRUCTURE = 1" MIN.
 INTO METAL STRUCTURE = 1" MIN.

WOOD AT HEAD OR JAMBS SG = 0.55 MIN.
 CONCRETE AT HEAD, SILL OR JAMBS f'c = 3000 PSI MIN.
 C-90 GROUT FILLED BLOCK AT JAMBS f'm = 2000 PSI MIN.

#8 X 3/4" PH SMS
 AT 3" FROM ENDS
 AND 14-1/2" O.C.
 (3) AT MTG. STILE LOCATION
 AT 3" O.C.

REINFORCING CHANNELS
 OPTIONAL
 SEE SHEET 3 FOR CAPACITY

Sealed: 7/11/2023



FL #17811

af c
AL-FAROOQ CORPORATION
 ENGINEERS & PRODUCT DEVELOPMENT
 9360 SUNSET DRIVE, SUITE 220
 MIAMI, FLORIDA 33173
 TEL. (305) 264-8100 WWW.AFCENG.COM
 COMP-ANL 22-04F-AAG
 FBPE #3538

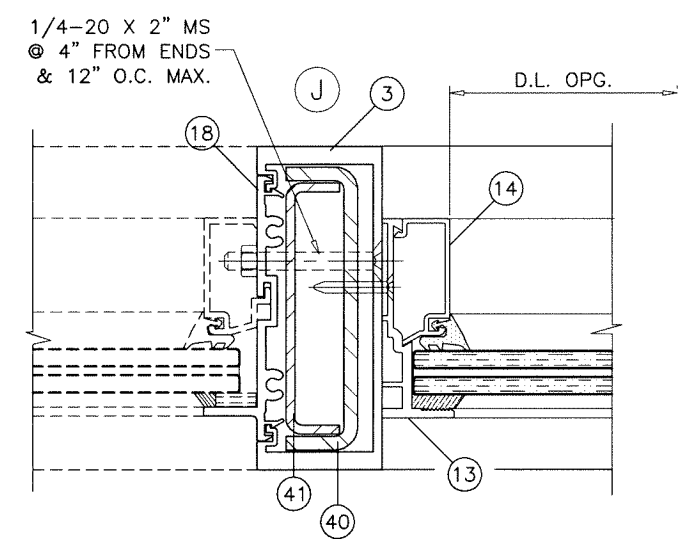
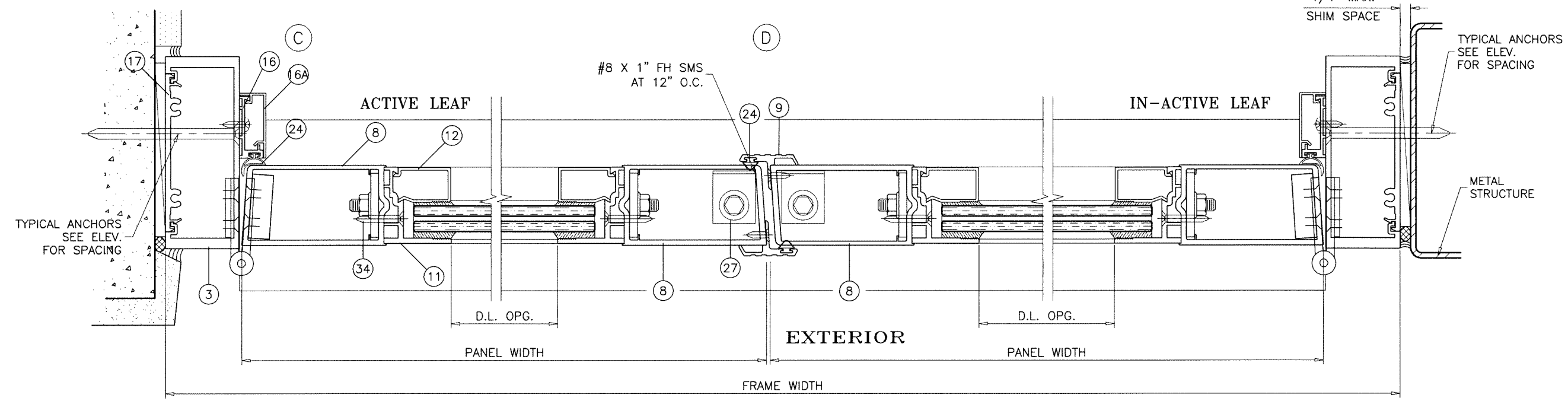
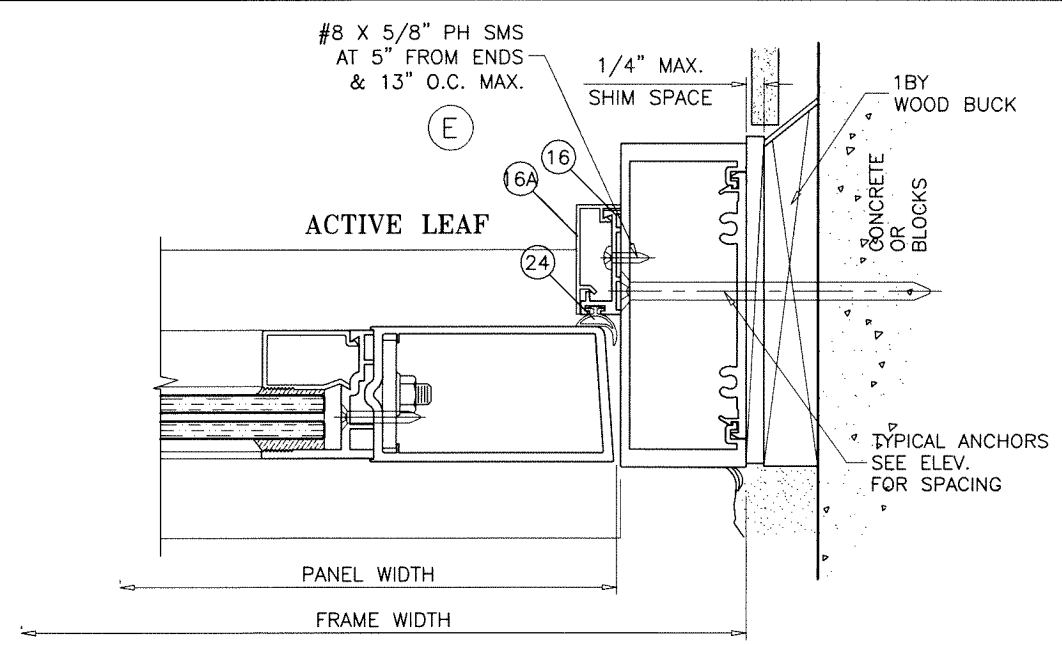
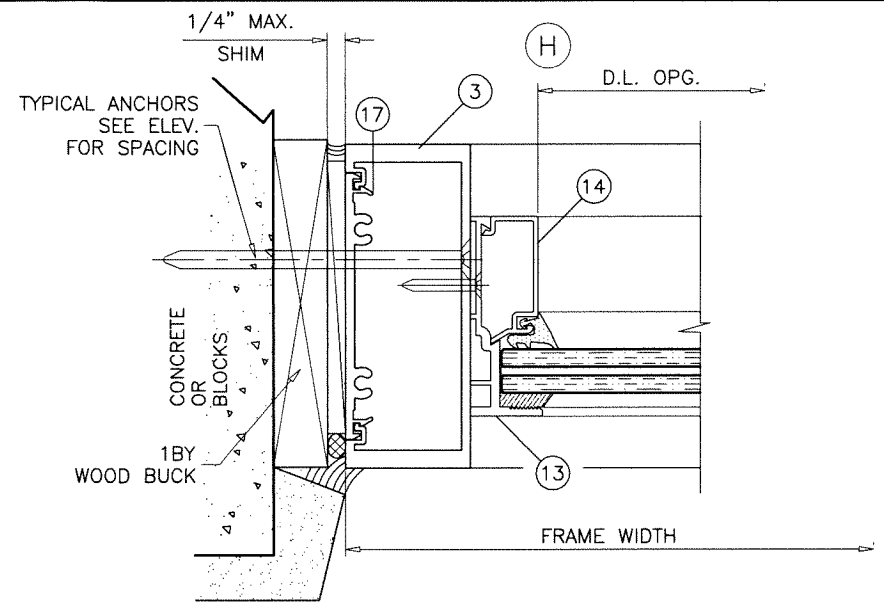
SERIES K2LM ALUM OUT-SWING ENTRANCE DOOR

Aldora Aluminum & Glass Products Inc.
 4250 Coral Ridge Drive, Suite 101
 Coral Springs, FL 33065
 Tel. (954) 784-6900 Fax. (954) 784-6901

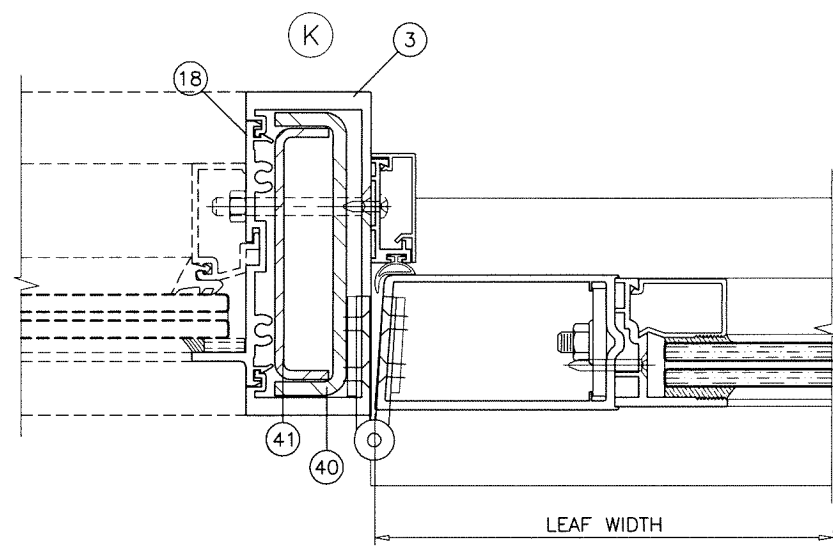
revisions:	no	date	by	description

date: 01-25-22
 scale: 3/8" = 1"
 dr. by: TARIQ
 chk. by:

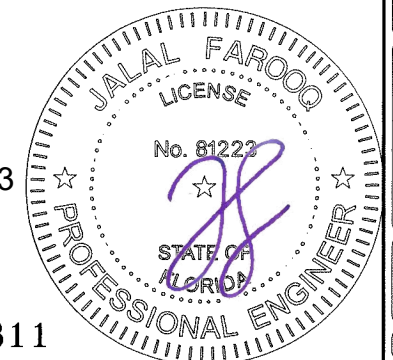
drawing no.
22-04F
 sheet 9 of 16



F.B.C. APPROVED
 LARGE MISSILE IMPACT RESISTANT SMI-175
 STOREFRONT SYSTEM, SEE SEPARATE
 'ALDORA ALUM & GLASS PRODUCTS'
 APPROVAL FOR DOOR MULLION CAPACITY



Sealed: 7/11/2023

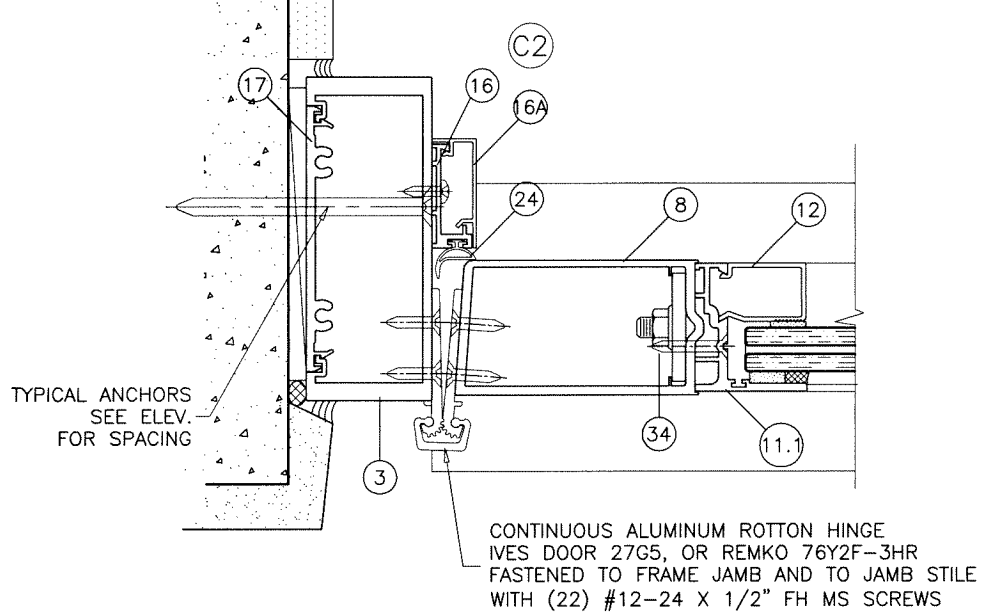
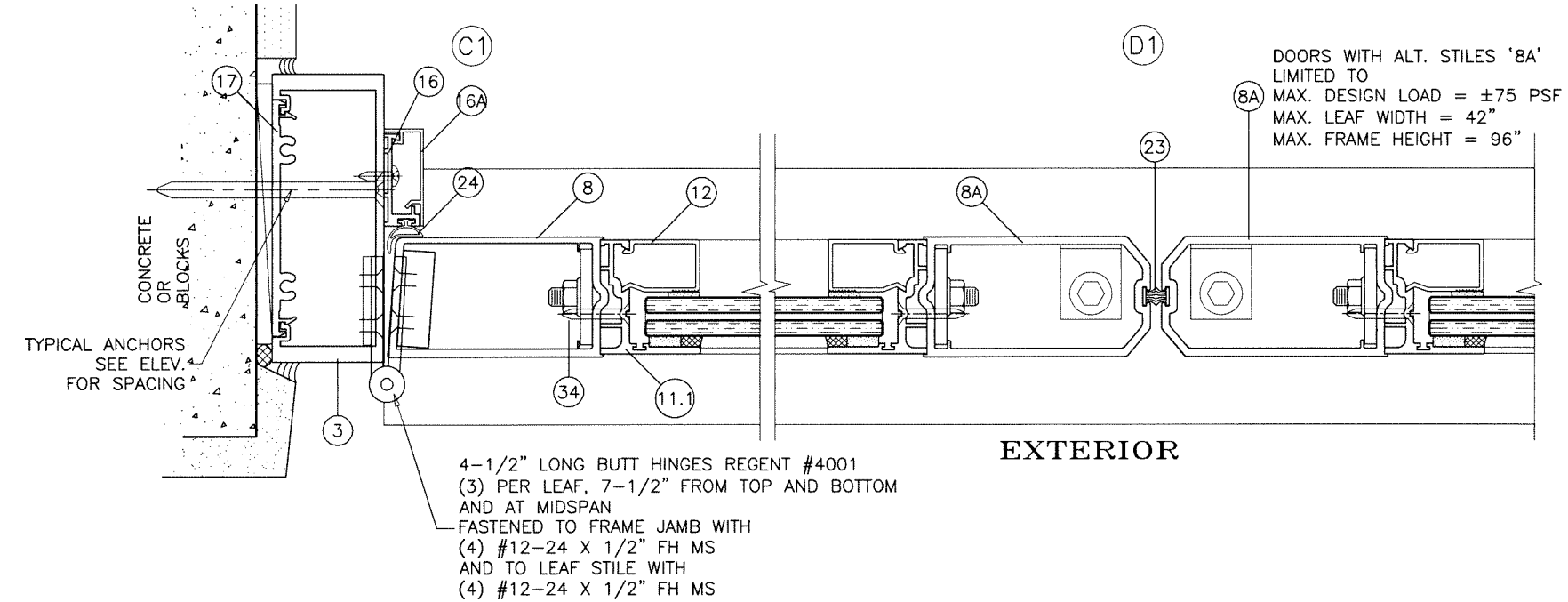
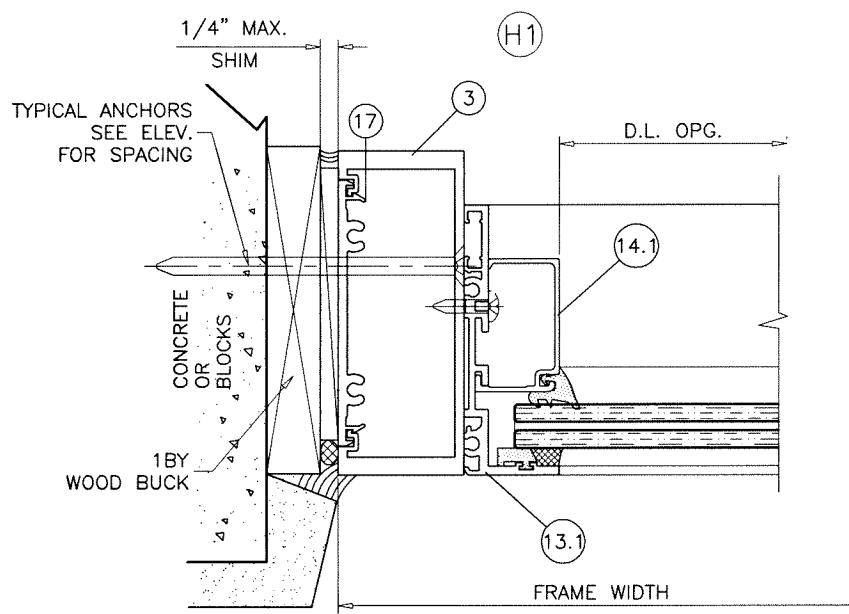
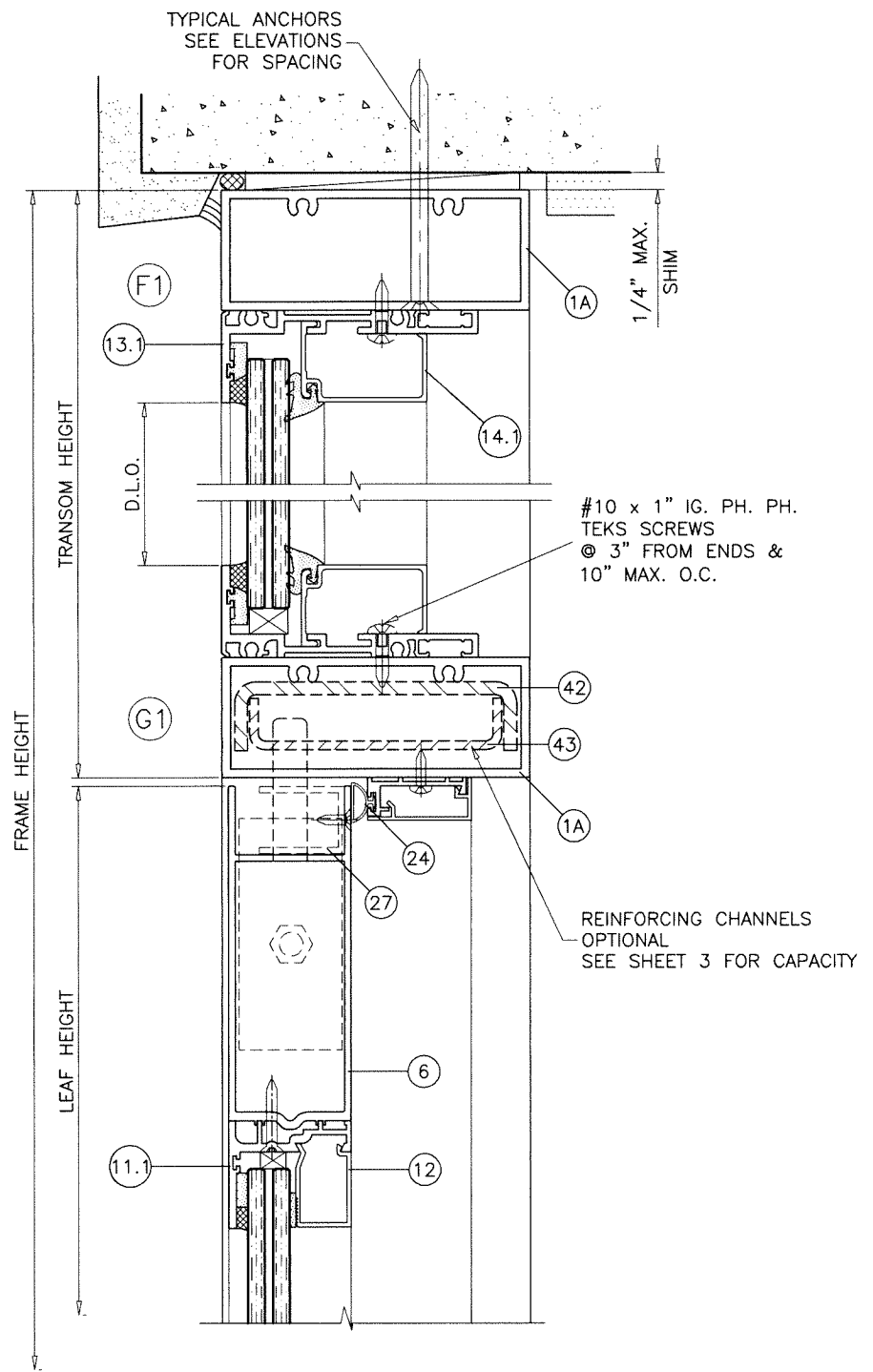


FL #17811

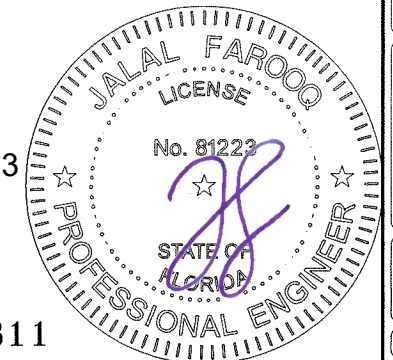
afc
AL-FAROOQ CORPORATION
 ENGINEERS & PRODUCT DEVELOPMENT
 9360 SUNSET DRIVE, SUITE 220
 MIAMI, FLORIDA 33173
 TEL. (305) 264-8100
 WWW.AFCENG.COM
 FBPE #8538
 COMP-ANL \ 22-04F-AAG

SERIES K2LM ALUM OUT-SWING ENTRANCE DOOR
Aldora Aluminum & Glass Products Inc.
 4250 Coral Ridge Drive, Suite 101
 Coral Springs, FL 33065
 Tel. (954) 784-6900 Fax. (954) 784-6901

revisions:	no	date	by	description
date:	01-25-22	scale:	3/8" = 1"	
dr. by:	TARIQ	chk. by:		
drawing no.	22-04F			
sheet	10 of 16			



Sealed: 7/11/2023



FL #17811

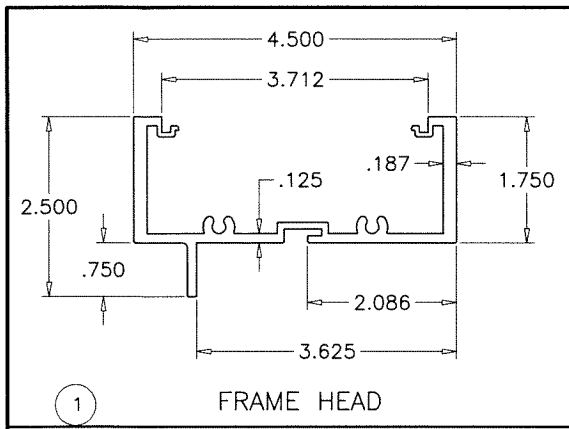
afc
AL-FAROOQ CORPORATION
 ENGINEERS & PRODUCT DEVELOPMENT
 9360 SUNSET DRIVE, SUITE 220
 MIAMI, FLORIDA 33173
 TEL. (305) 264-8100
 WWW.AFCENG.COM
 FBPE #3538
 COMP-ANL\22-04F-AAG

SERIES K2LM ALUM OUT-SWING ENTRANCE DOOR
Aldora Aluminum & Glass Products Inc.
 4250 Coral Ridge Drive, Suite 101
 Coral Springs, FL. 33065
 Tel. (954) 784-6900 Fax. (954) 784-6901

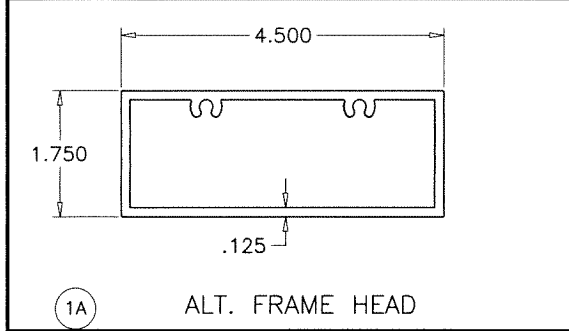
revisions:	no	date	by	description

date: 01-25-22
 scale: 3/8" = 1"
 dr. by: TARIQ
 chk. by:

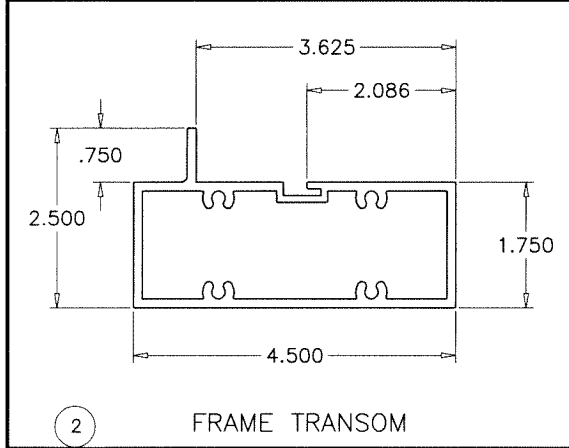
drawing no.
22-04F
 sheet 11 of 16



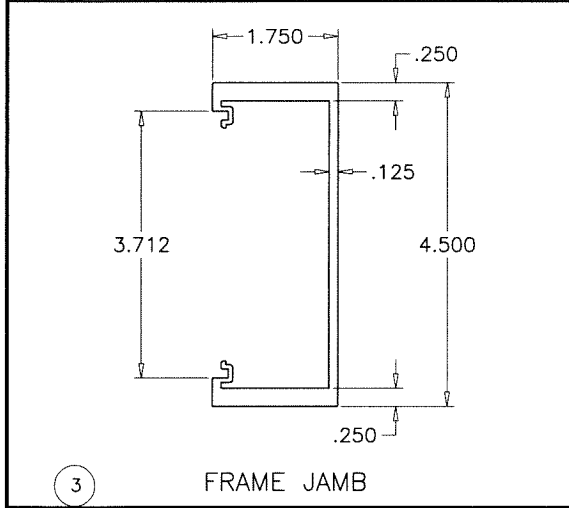
1 FRAME HEAD



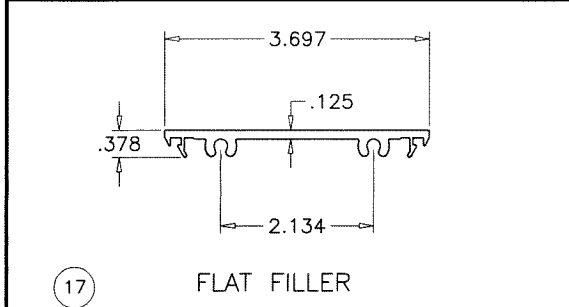
1A ALT. FRAME HEAD



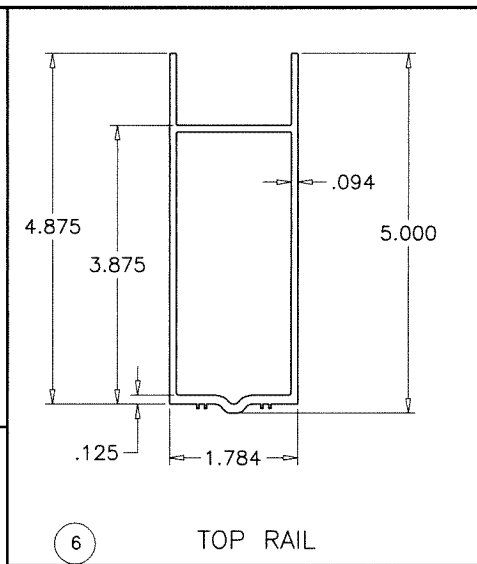
2 FRAME TRANSOM



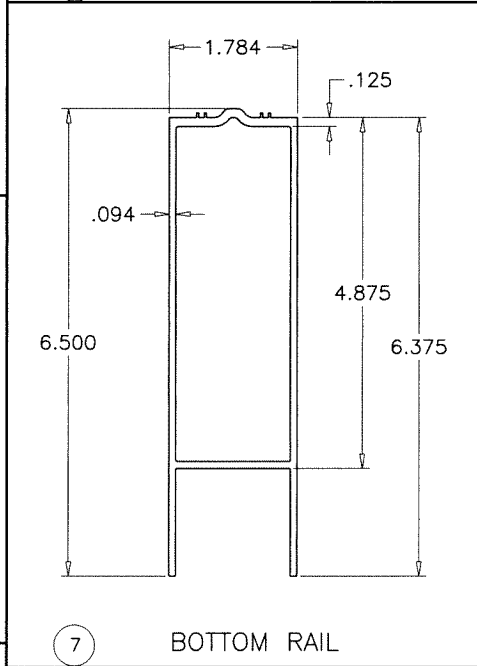
3 FRAME JAMB



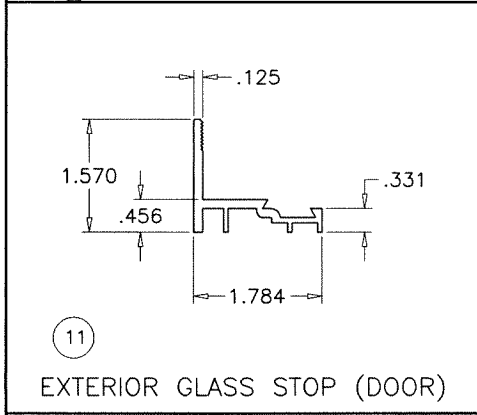
17 FLAT FILLER



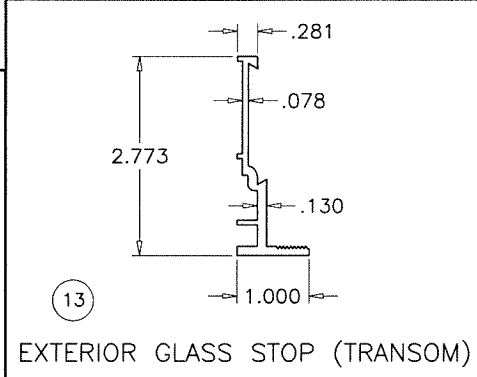
6 TOP RAIL



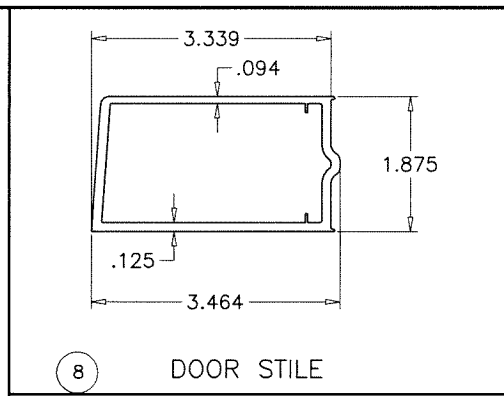
7 BOTTOM RAIL



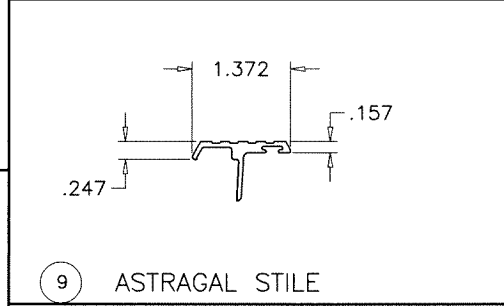
11 EXTERIOR GLASS STOP (DOOR)



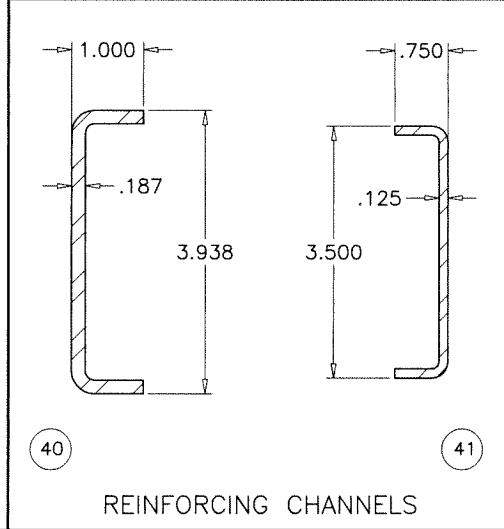
13 EXTERIOR GLASS STOP (TRANSOM)



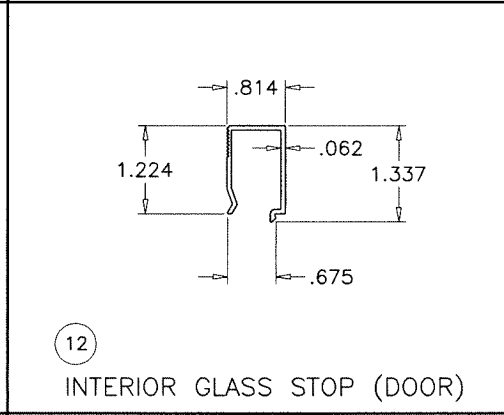
8 DOOR STILE



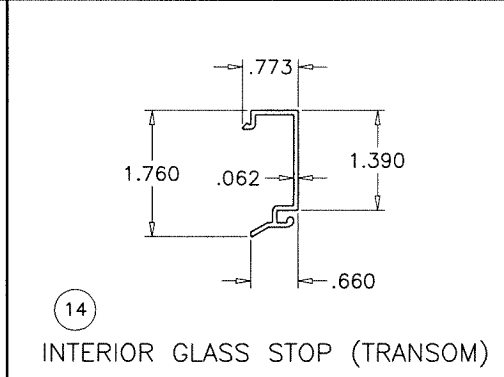
9 ASTRAGAL STILE



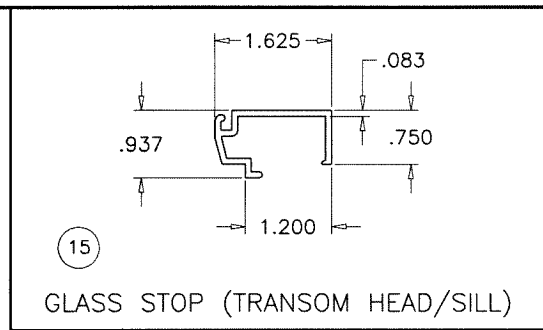
40 41 REINFORCING CHANNELS



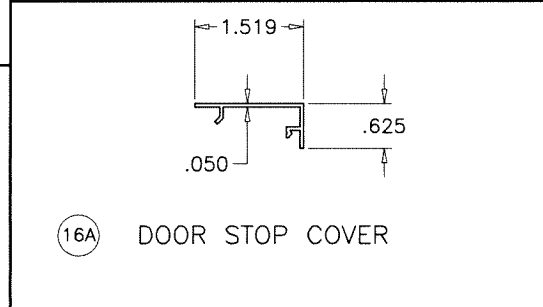
12 INTERIOR GLASS STOP (DOOR)



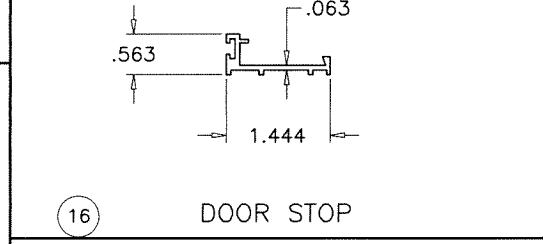
14 INTERIOR GLASS STOP (TRANSOM)



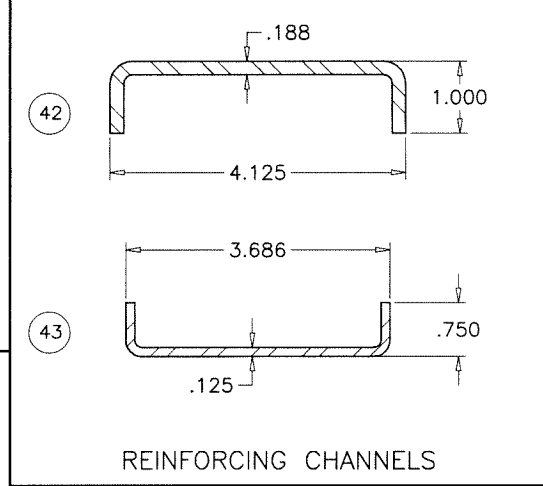
15 GLASS STOP (TRANSOM HEAD/SILL)



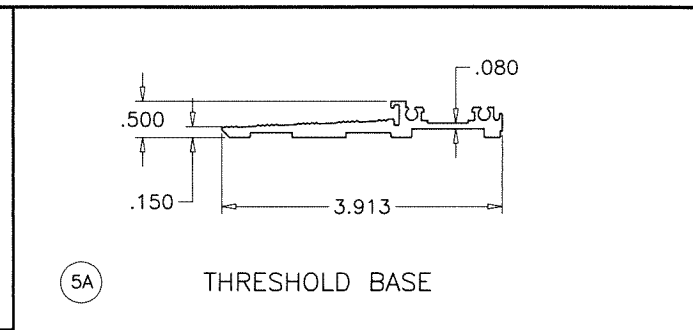
16A DOOR STOP COVER



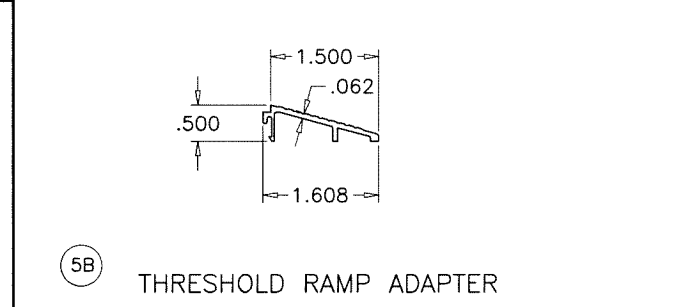
16 DOOR STOP



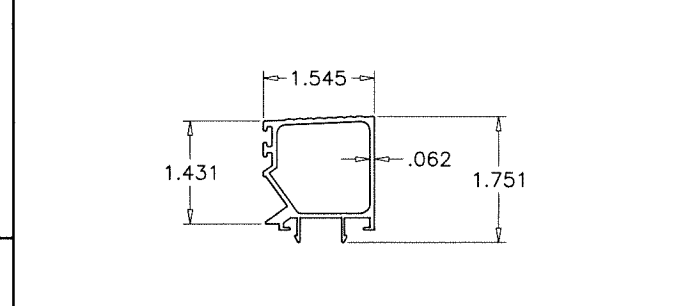
42 43 REINFORCING CHANNELS



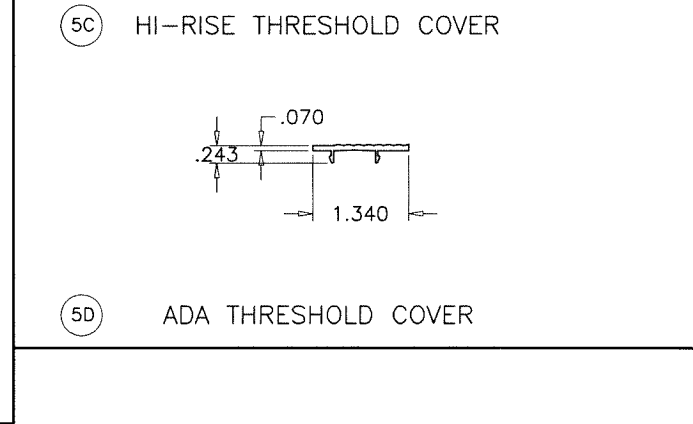
5A THRESHOLD BASE



5B THRESHOLD RAMP ADAPTER



5C HI-RISE THRESHOLD COVER



5D ADA THRESHOLD COVER

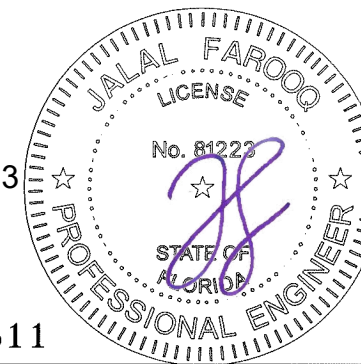
af c
AL-FAROOQ CORPORATION
 ENGINEERS & PRODUCT DEVELOPMENT
 9360 SUNSET DRIVE, SUITE 220
 MIAMI, FLORIDA 33173
 TEL. (305) 264-8100 WWW.AFCENG.COM
 FBPE # 3538 COMP-ANL\22-04F-AAG

SERIES K2LM ALUM OUT-SWING ENTRANCE DOOR
Aldora Aluminum & Glass Products Inc.
 4250 Coral Ridge Drive, Suite 101
 Coral Springs, FL 33065
 Tel. (954) 784-6900 Fax. (954) 784-6901

revisions:	no	date	by	description

date: 01-25-22
 scale: 3/8" = 1"
 dr. by: TARIQ
 chk. by:
 drawing no.
22-04F
 sheet 12 of 16

Sealed: 7/11/2023

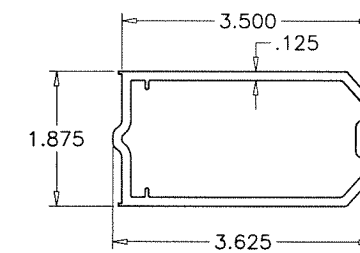


FL #17811

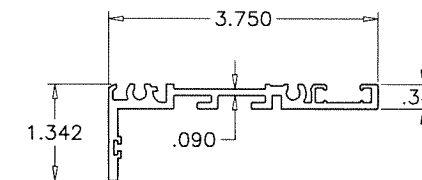
ITEM #	PART #	SMIS EXT. #	REQD.	DESCRIPTION	MATERIAL	MANF./SUPPLIER/REMARKS
1	5806	SMI-001	1	FRAME HEAD	6063-T6	-
1A	SMM-006	SMI-006	1	ALT. FRAME HEAD	6063-T6	-
2	5710	SMI-018	AS REQD.	FRAME TRANSOM	6063-T6	-
3	SMM-6007	SMI-005	2	FRAME JAMB	6063-T6	-
4	-	SMI-046	AS REQD.	MID-RAIL	6063-T6	OPTIONAL
4A	-	SMI-105	2	MID-RAIL CORNER CLIP	6005-T5	-
5A	-	SMI-036	1	THRESHOLD BASE	6063-T6	-
5B	-	SMI-037	1	THRESHOLD RAMP ADAPTER	6063-T5	-
5C	-	SMI-066	1	HI-RISE THRESHOLD COVER	6063-T5	-
5D	-	SMI-038	1	ADA THRESHOLD COVER	6063-T5	-
6	SMM-5984	SMI-012	1/ LEAF	TOP RAIL	6063-T6	-
7	SMM-5987	SMI-013	1/ LEAF	BOTTOM RAIL	6063-T6	-
8	SMM-5986	SMI-011	2/ LEAF	DOOR STILE	6063-T6	-
8A	-	SMI-009	2/ LEAF	ALT. DOOR STILE	6063-T6	-
9	SMI-030	SMI-030	1/ LEAF	ASTRAGAL	6063-T5	-
11	SMM-5981	SMI-007	4/ LEAF	EXTERIOR GLASS STOP (DOOR)	6063-T5	-
11.1	-	SMI-096	4/ LEAF	EXTERIOR GLASS STOP (DOOR)	6063-T5	-
12	SMM-5982	SMI-008	4/ LEAF	INTERIOR GLASS STOP (DOOR)	6063-T5	-
13	SMM-003	SMI-016	-	EXTERIOR GLASS STOP (TRANSOM JAMB)	-	-
13.1	SMI-PW001	-	-	TRANSOM ADAPTER	-	-
14	SMM-004	SMI-017	-	INTERIOR GLASS STOP (TRANSOM JAMB)	-	-
14.1	SMI-092	-	-	INTERIOR GLASS STOP (TRANSOM)	-	-
15	SMM-5712	SMI-002	2/ LITE	GLASS STOP (TRANSOM HEAD/SILL)	-	-
16	SMM-002	SMI-014	3/ DOOR	DOOR STOP	6063-T5	-
16A	SMM-001	SMI-015	3/ DOOR	DOOR STOP COVER	6063-T5	-
17	SMM-5807A	SMI-004	OPTIONAL	FLAT FILLER	6063-T6	-
18	SMI-003	-	AS REQD.	INTERMEDIATE SNAP-IN	6063-T5	-
19	H-63	SMI-G01	AS REQD.	WEDGE-IN GASKET	NEOPRENE	DUROMETER 68 SHORE A
20	-	SMI-G12	AS REQD.	DOUBLE FACE FOAM TAPE (3/16" X 1/2")	VINYL FOAM	FRANK LOWE
21	-	SMI-G07	AS REQD.	GASKET (@ EXTERIOR)	SANTOPRENE	CENTRAL PLASTICS INC.
22	-	SMI-G11	AS REQD.	SINGLE FACE FOAM TAPE (1/8" X 1/2)	VINYL FOAM	FRANK LOWE
23	-	SMI-W01	AS REQD.	PILE W'STRIPPING	WOOL	ULTRAFAB
24	-	SMI-G03	AS REQD.	BULB W'STRIPPING	VINYL	DUROMETER 83 SHORE A
26	-	-	2/ LEAF	3/8" THREADED ROD WITH NUT	STEEL	-
27	-	-	2/ LEAF	FLUSH BOLT GUIDE	ST. STEEL	-
28	-	-	AS REQD.	PUSH BAR	-	-
29	-	-	AS REQD.	PULL HANDLE	-	-
30	-	-	2	THRESHOLD CLIP	ALUMINUM	2" X 2" X 1/8" X 7/8" LONG
31	-	-	4/ LEAF	SUPPORT PLATE (1-1/2" X 3-3/8" X 3/16")	ALUMINUM	-
33	#12 X 1-1/2"	-	AS REQD.	FRAME ASSEMBLY SCREWS	-	HEX H TEKS
34	#10 X 1"	-	AS REQD.	GLASS STOP FASTENERS, AT 3" FROM ENDS & 10" O.C.	-	FH SMS
35	#12 X 3/4"	-	AS REQD.	THRESHOLD CLIP SCREWS	-	FH SELF DRILLING
37	#10 X 5/16"	-	2/ GUIDE	GUIDE INSTALLATION SCREWS	-	FH MS
40	-	-	-	REINFORCING CHANNEL (DOOR MULL)	STEEL	1" X 3-15/16" X 1" X 3/16" THK.
41	-	-	-	REINFORCING CHANNEL (DOOR MULL)	STEEL	3/4" X 3-1/2" X 3/4" X 1/8" THK.
42	-	-	OPTIONAL	REINFORCING CHANNEL (TRANSOM)	STEEL	1" X 4-1/8" X 1" X 3/16" THK.
43	-	-	OPTIONAL	REINFORCING CHANNEL (TRANSOM)	STEEL	3/4" X 3-11/16" X 3/4" X 1/8" THK.
44	-	-	2/ LITE	SETTING BLOCKS AT 1/4 POINTS	EPDM	DUROMETER 80±5 SHORE A
45	-	-	2/ LITE	SETTING BLOCKS AT 1/4 POINTS (1/4"X3/8"X4" LONG)	EPDM	TREMCO, DUROMETER 80±5 SHORE A

SEALANTS:

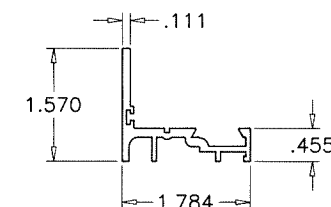
ALL FRAME AND LEAF CORNERS AND INSTALLATION SCREWS SEALED WITH SILICONE.



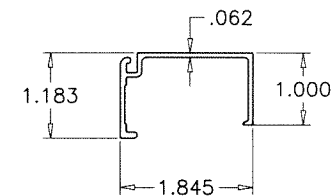
8A ALT. DOOR STILE



13.1 TRANSOM ADAPTER



11.1 EXTERIOR GLASS STOP (DOOR)



14.1 INTERIOR GLASS STOP (TRANSOM)

af c
AL-FAROOQ CORPORATION
 ENGINEERS & PRODUCT DEVELOPMENT
 9360 SUNSET DRIVE, SUITE 220
 MIAMI, FLORIDA 33173
 TEL. (305) 264-8100
 WWW.AFCENG.COM
 FBPE #3598

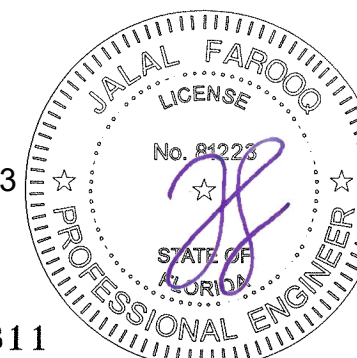
SERIES K2LM ALUM OUT-SWING ENTRANCE DOOR
Aldora Aluminum & Glass Products Inc.
 4250 Coral Ridge Drive, Suite 101
 Coral Springs, FL 33065
 Tel. (954) 784-6900 Fax. (954) 784-6901

revisions:	no	date	by	description

date: 01-25-22
 scale: 3/8" = 1"
 dr. by: TARIQ
 chk. by:

drawing no.
22-04F
 sheet 13 of 16

Sealed: 7/11/2023



FL #17811

LOCK OPTIONS:

OPTION 1:

SINGLE LEAF DOORS:

ALL SINGLE LEAF DOORS TO BE FITTED WITH 3 POINT LOCK

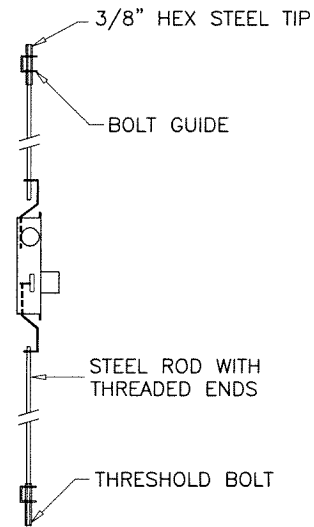
DOUBLE LEAF DOORS:

ACTIVE LEAF:

THREE POINT LOCK SYSTEM WITH 5 PLY HOOK LOCK BOLT REGENT 2222, KEY OPERATED ON EXTERIOR AND THUMB-TURN ON INTERIOR, LOCATED AT 34" FROM BOTTOM OF PANEL

INACTIVE LEAF:

TWO POINT LOCK SYSTEM SULLIVAN CH 103 WITH THUMB TURN ON THE INTERIOR, LOCATED AT 34" FROM BOTTOM OF PANEL



OPTION 2:

SINGLE LEAF DOORS:

ALL SINGLE LEAF DOORS TO BE FITTED WITH 3 POINT LOCK

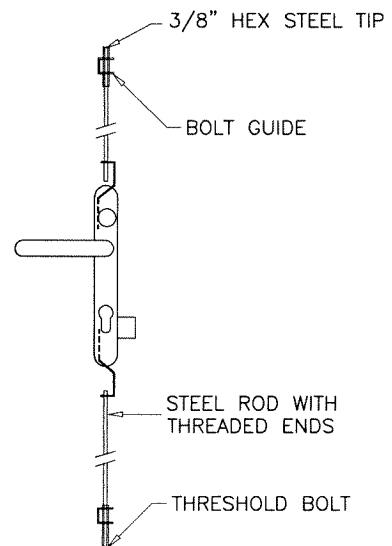
DOUBLE LEAF DOORS:

ACTIVE LEAF:

THREE POINT LOCK SYSTEM WITH 4 PLY HOOK LOCK REGENT NO. 206-3P, KEY OPERATED ON EXTERIOR AND THUMB-TURN ON INTERIOR, LOCATED AT 36" FROM BOTTOM OF PANEL

INACTIVE LEAF:

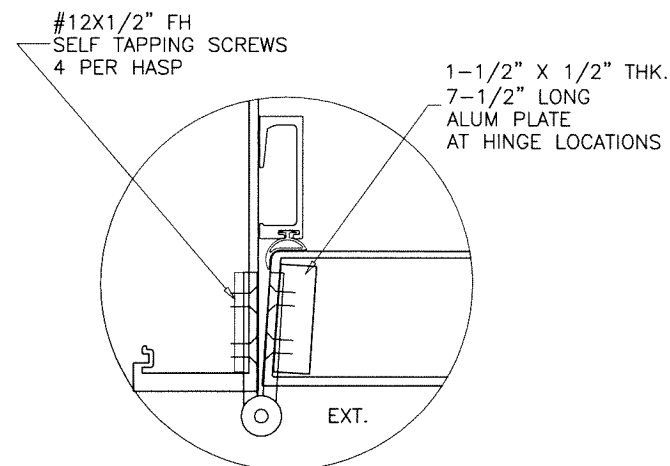
TWO POINT LOCK SYSTEM SULLIVAN CH 103 WITH THUMB TURN ON THE INTERIOR, LOCATED AT 36" FROM BOTTOM OF PANEL



HINGE OPTIONS:

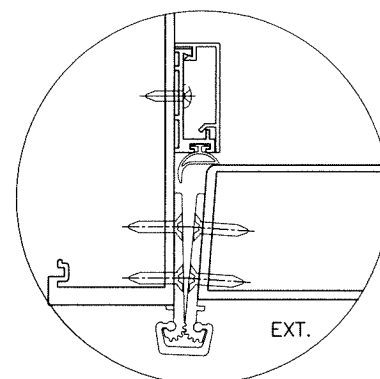
BUTT HINGES:

4-1/2 X 4" TWO PIECE STAINLESS STEEL BUTT HINGES AT 8" FROM TOP AND BOTTOM AND 26" O.C. MAX.

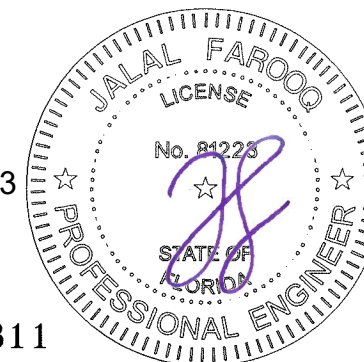


ROTON HINGE:

LIMIT MAX. DESIGN LOADS = ±75.0 PSF
MAX. LEAF WIDTH = 42"
MAX. FRAME HEIGHT = 96"



Sealed: 7/11/2023



FL #17811

AL-FAROOQ CORPORATION
ENGINEERS & PRODUCT DEVELOPMENT
9360 SUNSET DRIVE, SUITE 220
MIAMI, FLORIDA 33173
TEL. (305) 264-8100
WWW.AFCENG.COM
FBPE #3538
COMP-ANL\22-04F-AAG

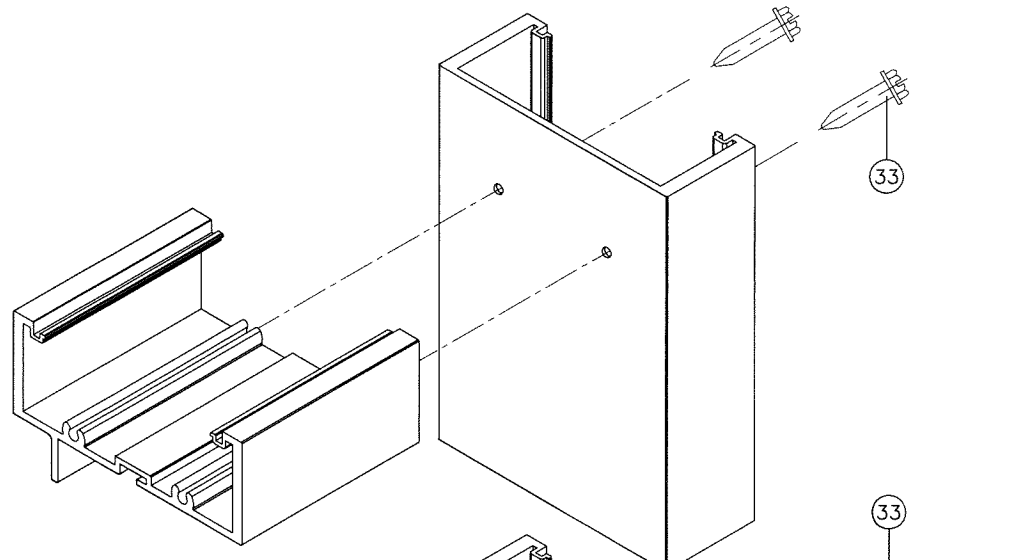
SERIES K2LM ALUM OUT-SWING ENTRANCE DOOR
Aldora Aluminum & Glass Products Inc.
4250 Coral Ridge Drive, Suite 101
Coral Springs, FL 33065
Tel. (954) 784-6900 Fax. (954) 784-6901

no	date	description

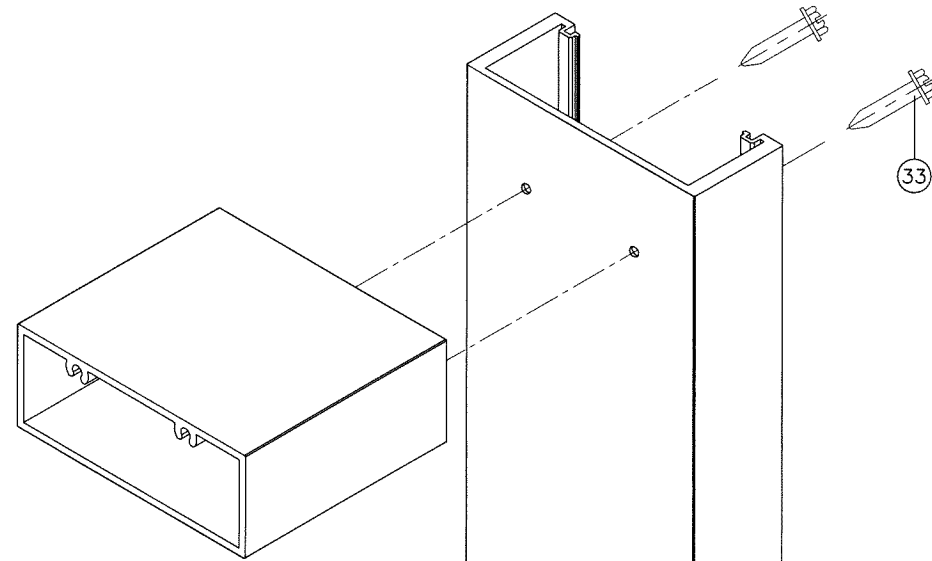
date: 01-25-22
scale: 3/8" = 1"
dr. by: TARIQ
chk. by:

drawing no.
22-04F

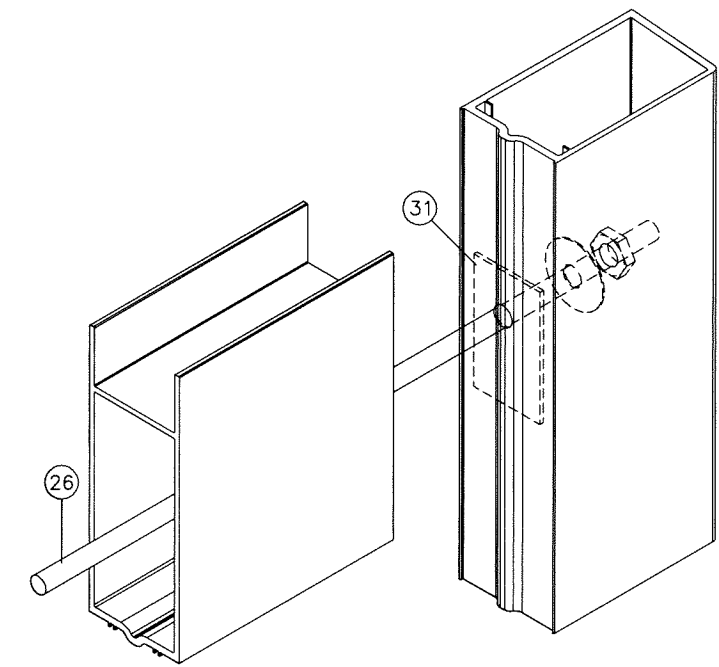
sheet 14 of 16



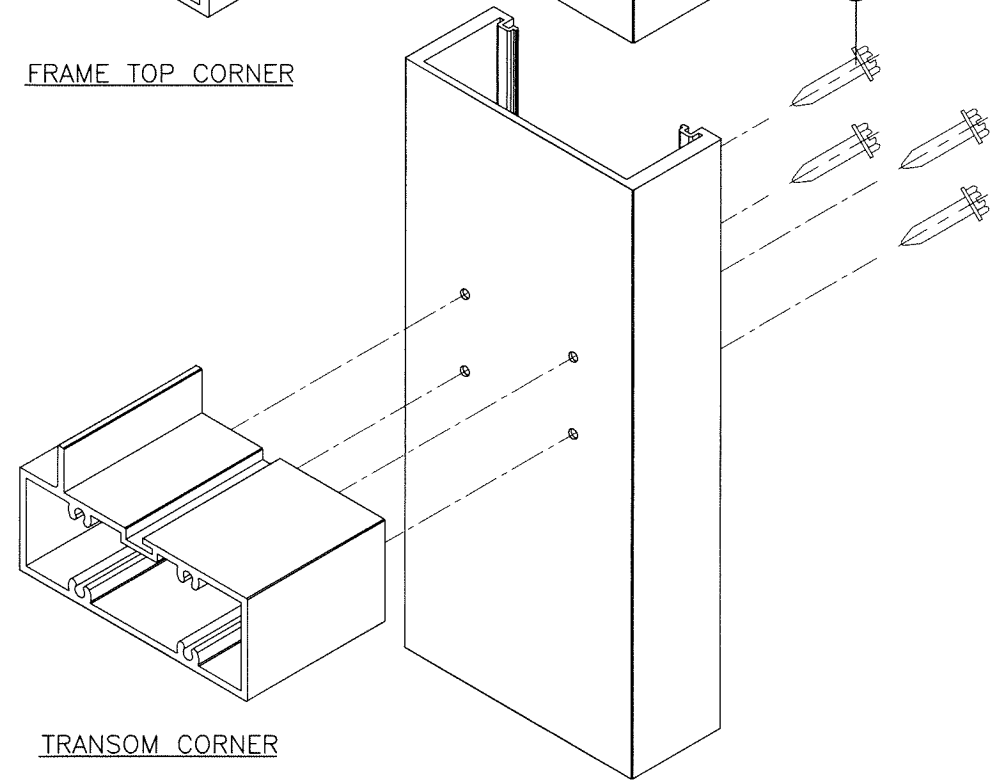
FRAME TOP CORNER



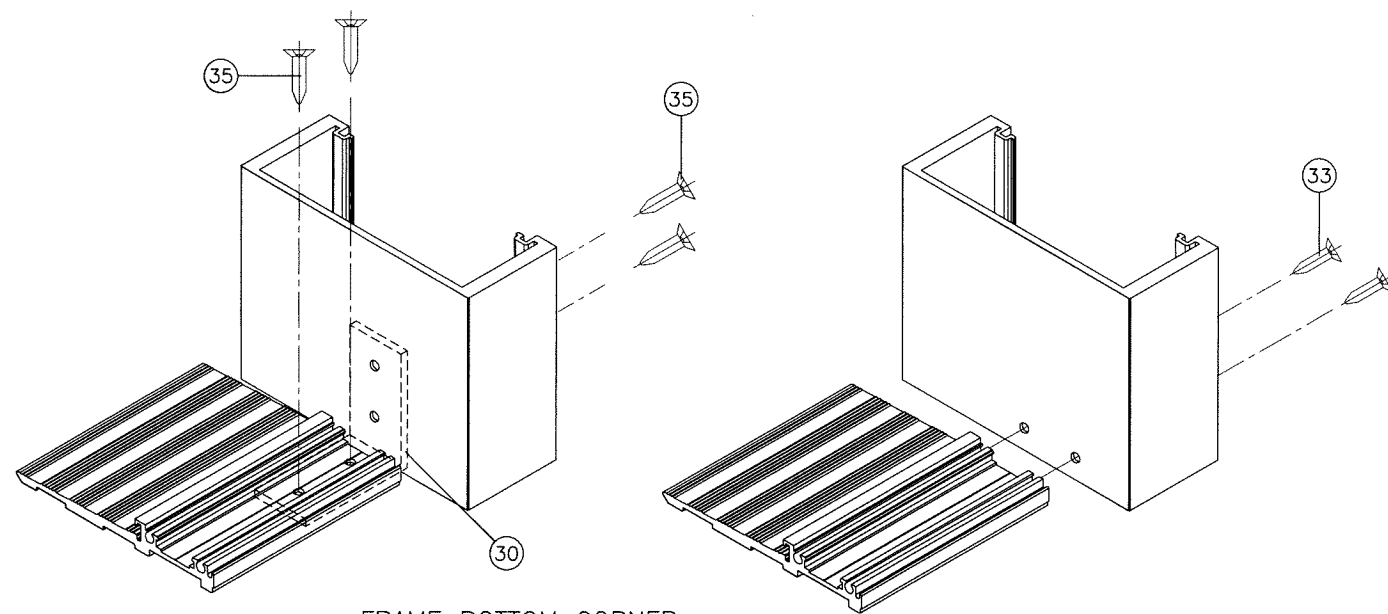
DOOR CORNER



DOOR LEAF CORNER

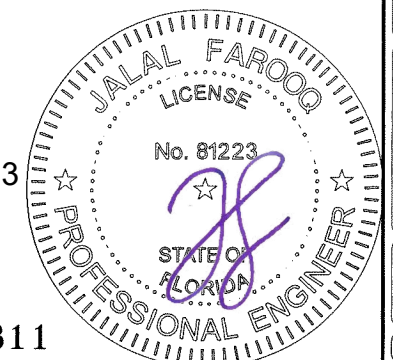


TRANSOM CORNER



FRAME BOTTOM CORNER

Sealed: 7/11/2023



FL #17811

a f c
AL-FAROOQ CORPORATION
 ENGINEERS & PRODUCT DEVELOPMENT
 9360 SUNSET DRIVE, SUITE 220
 MIAMI, FLORIDA 33173
 TEL. (305) 264-8100 WWW.AFCENG.COM
 FBPE #3538 COMP-ANL\22-04F-AAG

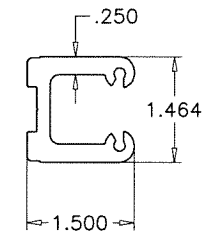
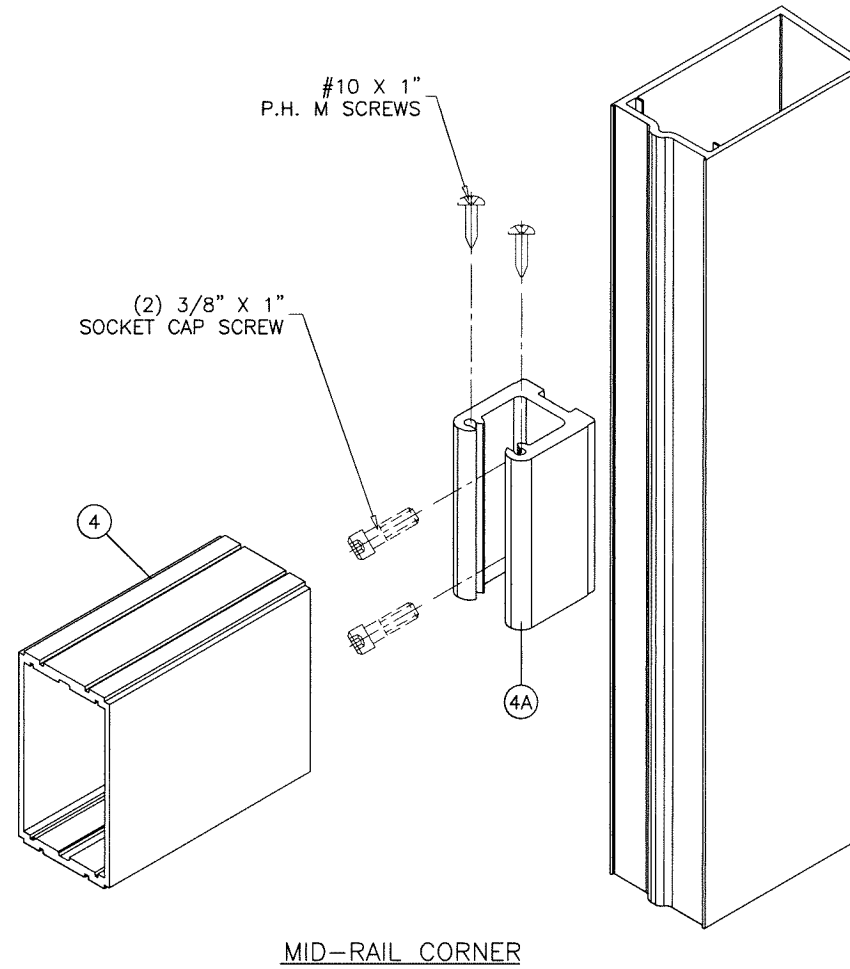
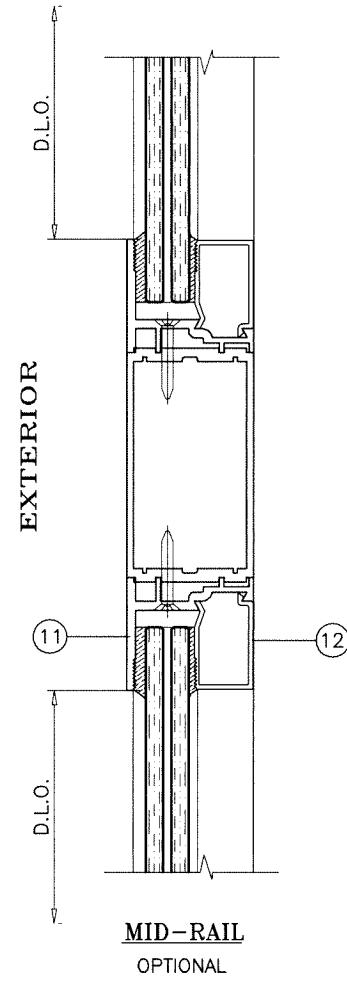
SERIES K2LM ALUM OUT-SWING ENTRANCE DOOR
Aldora Aluminum & Glass Products Inc.
 4250 Coral Ridge Drive, Suite 101
 Coral Springs, FL 33065
 Tel. (954) 784-6900 Fax. (954) 784-6901

revisions:	
no	date by description

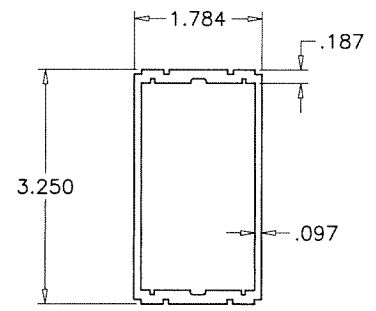
date: 01-25-22
 scale: 3/8" = 1"
 dr. by: TARIQ
 chk. by:

drawing no.
22-04F

sheet 15 of 16

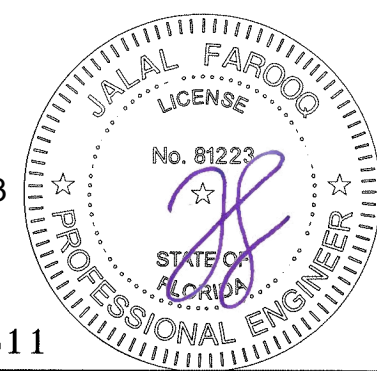


4A MID-RAIL CORNER CLIP



4 MID-RAIL

Sealed: 7/11/2023



FL #17811

af c
AL-FAROOQ CORPORATION
 ENGINEERS & PRODUCT DEVELOPMENT
 9360 SUNSET DRIVE, SUITE 220
 MIAMI, FLORIDA 33173
 TEL. (305) 264-8100
 WWW.AFCENG.COM
 FBPE #3538
 COMP-ANL\22-04F-AAG

SERIES K2LM ALUM OUT-SWING ENTRANCE DOOR
Aldora Aluminum & Glass Products Inc.
 4250 Coral Ridge Drive, Suite 101
 Coral Springs, FL. 33065
 Tel. (954) 784-6900 Fax. (954) 784-6901

revisions:	no	date	by	description

date: 01-25-22
 scale: 3/8" = 1"
 dr. by: TARIQ
 chk. by:

drawing no.
22-04F
 sheet 16 of 16