

TYPICAL ELEVATIONS

**SERIES SMI-090 ALUMINUM WINDOW WALL**

THIS SYSTEM MAY BE USED IN CONJUNCTION WITH F.B.C. APPR'D DOORS.  
 LOWER DESIGN PRESSURE FROM STOREFRONT OR DOOR APPROVAL WILL APPLY TO ENTIRE SYSTEM.  
 CODE REQUIREMENTS FOR SAFEGUARDS MUST BE OBSERVED.

THIS PRODUCT HAS BEEN DESIGNED AND TESTED TO COMPLY WITH THE REQUIREMENTS OF THE 2020 (7TH EDITION)/2023 (8TH EDITION) FLORIDA BUILDING CODE INCLUDING HIGH VELOCITY HURRICANE ZONE (HVHZ).

1BY OR 2BY WOOD BUCKS & BUCK FASTENERS BY OTHERS, MUST BE DESIGNED AND INSTALLED ADEQUATELY TO TRANSFER APPLIED PRODUCT LOADS TO THE BUILDING STRUCTURE.

ANCHORS SHALL BE CORROSION RESISTANT, SPACED AS SHOWN ON DETAILS AND INSTALLED PER MANUF'S INSTRUCTIONS. SPECIFIED EMBEDMENT TO BASE MATERIAL SHALL BE BEYOND WALL DRESSING OR STUCCO.

A LOAD DURATION INCREASE IS USED IN DESIGN OF ANCHORS INTO WOOD ONLY. ALL SHIMS TO BE HIGH IMPACT, NON-METALLIC AND NON-COMPRESSIBLE.

MATERIALS INCLUDING BUT NOT LIMITED TO STEEL/METAL SCREWS, THAT COME INTO CONTACT WITH OTHER DISSIMILAR MATERIALS SHALL MEET THE REQUIREMENTS OF THE 2020/2023 FLORIDA BLDG. CODE & ADOPTED STANDARDS.

THIS PRODUCT APPROVAL IS GENERIC AND DOES NOT PROVIDE INFORMATION FOR A SITE SPECIFIC PROJECT, i.e. LIFE SAFETY OF THIS PRODUCT, ADEQUACY OF STRUCTURE RECEIVING THIS PRODUCT AND SEALING AROUND OPENING FOR WATER INFILTRATION RESISTANCE ETC. CONDITIONS NOT SHOWN IN THIS DRAWING ARE TO BE ANALYZED SEPARATELY, AND TO BE REVIEWED BY BUILDING OFFICIAL.

DESIGN LOADS SHOWN ARE BASED ON 'ALLOWABLE STRESS DESIGN (ASD)'.

MANUFACTURER'S LABEL SHALL BE LOCATED ON A READILY VISIBLE LOCATION IN ACCORDANCE WITH SECTION 1709.9.3 OF FLORIDA BUILDING CODE. LABELING TO COMPLY WITH SECTION 1709.9.2.

**INSTRUCTIONS:**

USE CHARTS AS FOLLOWS.

- STEP 1** DETERMINE DESIGN WIND LOAD REQUIREMENT BASED ON WIND VELOCITY, BLDG. HEIGHT, WIND ZONE USING APPLICABLE ASCE 7 STANDARD.
- STEP 2** SEE CHARTS ON SHEET 2 FOR DESIGN LOAD CAPACITY OF DESIRED GLASS SIZE.
- STEP 3** CHECK MULLION CAPACITY FOR A GIVEN SPACING AND HEIGHT USING CHARTS ON SHEET 3 & 4. THE CAPACITY SHOULD EXCEED THE DESIGN LOAD.
- STEP 4** USING CHART ON SHEETS 5 SELECT ANCHOR OPTION WITH DESIGN RATING MORE THAN DESIGN LOAD SPECIFIED IN STEP 1 ABOVE.
- STEP 5** THE LOWEST VALUE RESULTING FROM STEPS 2, 3 AND 4 SHALL APPLY TO ENTIRE SYSTEM.

THIS SYSTEM IS NOT RATED FOR IMPACT.  
 INSTALLATION OF THIS PRODUCT IN THE HVHZ AREA REQUIRES THE USE OF APPROVED SHUTTERS OR EXTERNAL PROTECTION DEVICES COMPLYING WITH HVHZ REQUIREMENTS.  
 INSTALLATION OF THIS SYSTEM OUTSIDE THE HVHZ AREA MUST MEET THE APPLICABLE REQUIREMENTS FOR WIND BORNE DEBRIS PROTECTION.

Sealed: 7/11/2023

FL #25948.2

A- CONTRACTOR TO BE RESPONSIBLE FOR THE SELECTION, PURCHASE AND INSTALLATION OF THIS PRODUCT BASED ON THIS PRODUCT EVALUATION PROVIDED HE/SHE DOES NOT DEVIATE FROM THE CONDITIONS DETAILED ON THIS DOCUMENT.  
 B- THIS PRODUCT EVALUATION DOCUMENT WILL BE CONSIDERED INVALID IF ALTERED BY ANY MEANS.  
 C- SITE SPECIFIC PROJECTS SHALL BE PREPARED BY A FLORIDA REGISTERED ENGINEER OR ARCHITECT WHICH WILL BECOME THE ENGINEER OF RECORD (E.O.R.) FOR THE PROJECT AND WHO WILL BE RESPONSIBLE FOR THE PROPER USE OF THE P.E.D. ENGINEER OF RECORD, ACTING AS A DELEGATED ENGINEER TO THE P.E.D. ENGINEER SHALL SUBMIT TO THIS LATTER THE SITE SPECIFIC DRAWINGS FOR REVIEW.  
 D- THIS P.E.D. SHALL BEAR THE DATE AND ORIGINAL SEAL AND SIGNATURE OF THE PROFESSIONAL ENGINEER OF RECORD THAT PREPARED IT.



**afC**  
**AL-FAROOQ CORPORATION**  
 ENGINEERS & PRODUCT DEVELOPMENT  
 9360 SUNSET DRIVE, SUITE 220  
 MIAMI, FLORIDA 33173 (C.A.N. 3538)  
 TEL. (305) 264-8100 FAX. (305) 262-6978  
 COMP-ANL\18-17F-AGP

SERIES SMI-090 ALUM WINDOW WALL (N.I.)  
**Aldora Aluminum & Glass Products Inc.**  
 4250 Coral Ridge Drive, Suite 101  
 Coral Springs, FL 33065  
 Tel. (954) 784-6900 Fax. (954) 784-6901

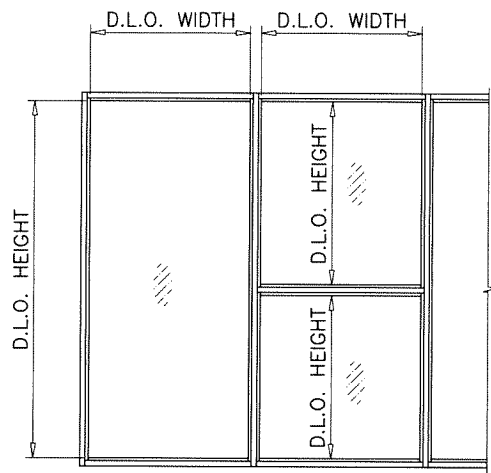
no	date	description	by
A	06.25.20	UPDATED TO 2020 FBC	
B	07.01.23	UPDATED TO 2023 FBC	

revisions:

date: 01-16-18  
 scale: 1/2"=1'-0"  
 dr. by: TARIQ  
 chk. by:

drawing no. 18-17F  
 sheet 1 of 10

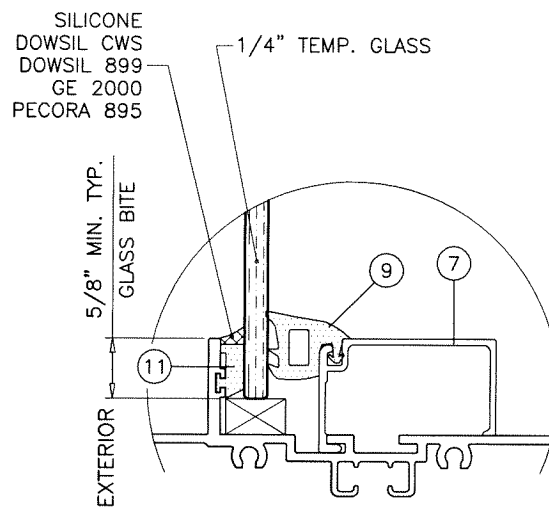
GLASS LOAD CAPACITY - PSF			
NOMINAL DIMS.		GLASS TYPES	
		'A'	'A1'
D.L.O. WIDTH	D.L.O. HEIGHT	EXT.(+) INT.(-)	EXT.(+) INT.(-)
26-1/4"	84-1/2"	120.0	120.0
32-1/4"		120.0	120.0
38-1/4"		120.0	120.0
44-1/4"		120.0	120.0
50-1/4"		120.0	120.0
56-1/4"		120.0	120.0
26-1/4"	90-1/2"	120.0	120.0
32-1/4"		120.0	120.0
38-1/4"		120.0	120.0
44-1/4"		120.0	120.0
50-1/4"		120.0	120.0
56-1/4"		120.0	120.0
26-1/4"	96-1/2"	120.0	120.0
32-1/4"		120.0	120.0
38-1/4"		120.0	120.0
44-1/4"		114.2	120.0
50-1/4"		111.1	120.0
56-1/4"		108.0	120.0
26-1/4"	102-1/2"	120.0	120.0
32-1/4"		120.0	120.0
38-1/4"		120.0	120.0
44-1/4"		106.5	120.0
50-1/4"		103.4	120.0
56-1/4"		100.4	120.0
26-1/4"	108-1/2"	120.0	120.0
32-1/4"		120.0	120.0
38-1/4"		115.7	120.0
44-1/4"		100.4	120.0
50-1/4"		97.3	120.0
56-1/4"		94.2	120.0
26-1/4"	114-1/2"	120.0	120.0
32-1/4"		120.0	120.0
38-1/4"		112.6	120.0
44-1/4"		95.2	120.0
50-1/4"		92.1	120.0
56-1/4"		89.0	120.0
26-1/4"	120-1/2"	120.0	120.0
32-1/4"		120.0	120.0
38-1/4"		110.1	120.0
44-1/4"		92.1	120.0
50-1/4"		89.0	120.0
56-1/4"		85.9	120.0
26-1/4"	126-1/2"	120.0	120.0
32-1/4"		120.0	120.0
38-1/4"		108.0	120.0
44-1/4"		90.0	120.0
50-1/4"		86.9	120.0
56-1/4"		83.8	120.0
26-1/4"	132-1/2"	120.0	120.0
32-1/4"		120.0	120.0
38-1/4"		108.0	120.0
44-1/4"		90.0	120.0
50-1/4"		86.9	120.0
56-1/4"		83.8	120.0
26-1/4"	138-1/2"	120.0	120.0
32-1/4"		120.0	120.0
38-1/4"		108.0	120.0
44-1/4"		90.0	120.0
50-1/4"		86.9	120.0
56-1/4"		83.8	120.0



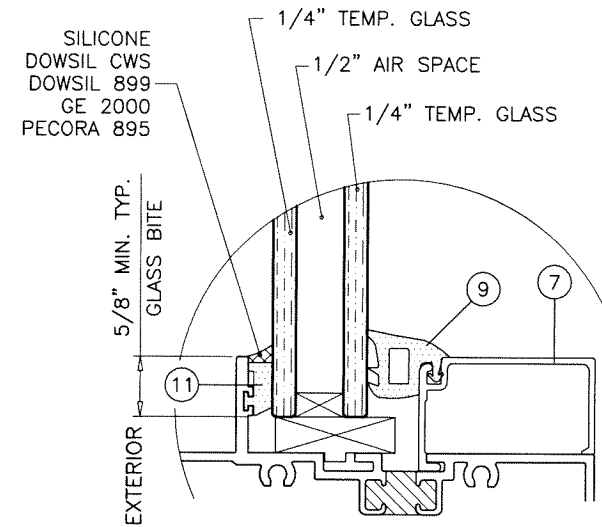
NOTE:  
INTERPOLATION BETWEEN WIDTHS OR HEIGHTS ALLOWED.

D.L.O. HEIGHT = FRAME HEIGHT - 5.5" (WINDOW WALL SYS. W/O HORIZONTALS)  
D.L.O. WIDTH = FRAME WIDTH - 5.5" (SINGLE PANEL)  
MULLION CL TO CL SPACING - 3.75" (MULTIPLE PANELS)

NOTE:  
GLASS CAPACITIES ON THIS SHEET ARE  
BASED ON ASTM E1300-09 (3 SEC. GUSTS).

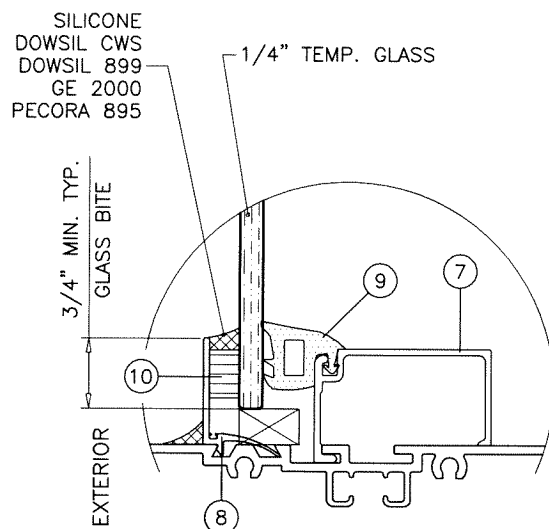
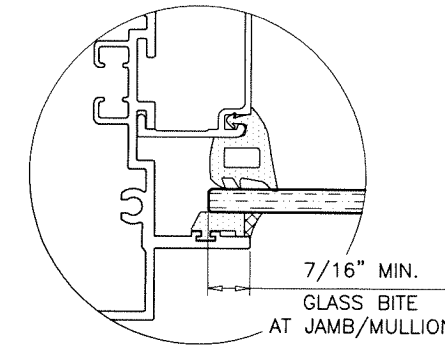


GLASS TYPE 'A'  
MONOLITHIC GLASS

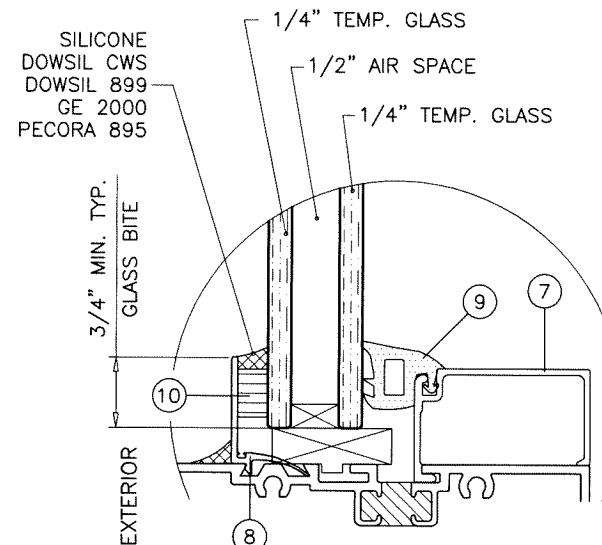


GLASS TYPE 'A1'  
1" OVERALL INSUL. GLASS

GLAZING OPTIONS  
INTERIOR GLAZED

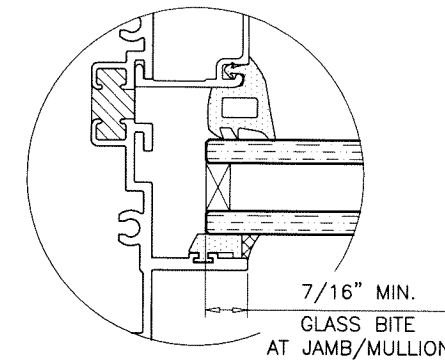


GLASS TYPE 'A'  
MONOLITHIC GLASS



GLASS TYPE 'A1'  
1" OVERALL INSUL. GLASS

GLAZING OPTIONS  
EXTERIOR GLAZED



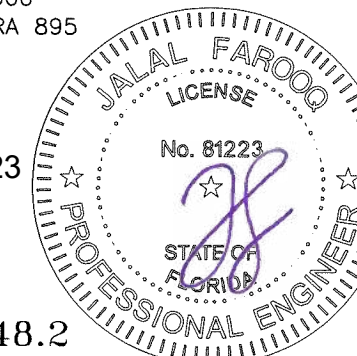
NOTE:  
WINDOW WALL FRAMES AT INSULATED GLASS OPTION  
MAY BE WITH OR WITHOUT THERMAL BREAK.

1/2" AIR SPACE CONSISTING OF:  
SPACER:  
ALUMINUM BOX SPACER AROUND  
THE PERIMETER OF THE GLASS.  
PERIMETER SEALANT:  
SILICONE  
DOWSIL CWS  
DOWSIL 899  
GE 2000  
PECORA 895

Sealed: 7/11/2023

GLASS

FL #25948.2



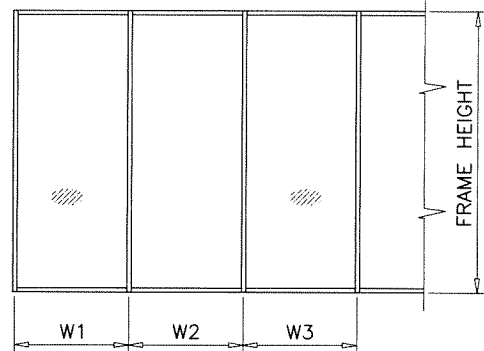
**af c**  
**AL-FAROOQ CORPORATION**  
ENGINEERS & PRODUCT DEVELOPMENT  
9360 SUNSET DRIVE, SUITE 220  
MIAMI, FLORIDA 33173  
TEL. (305) 264-8100 FAX. (305) 262-6978  
(C.A.N. 3538)

SERIES SMI-090 ALUM WINDOW WALL (N.I.)  
**Aldora Aluminum & Glass Products Inc.**  
4250 Coral Ridge Drive, Suite 101  
Coral Springs, FL. 33065  
Tel. (954) 784-6900 Fax. (954) 784-6901

revisions:	no	date	by	description
date:	01-16-18	scale:	1/2" = 1"	
dr. by:	TARIQ	chk. by:		
drawing no.	18-17F			
sheet	2 of 10			

COMP-ANL\18-17F-AGP

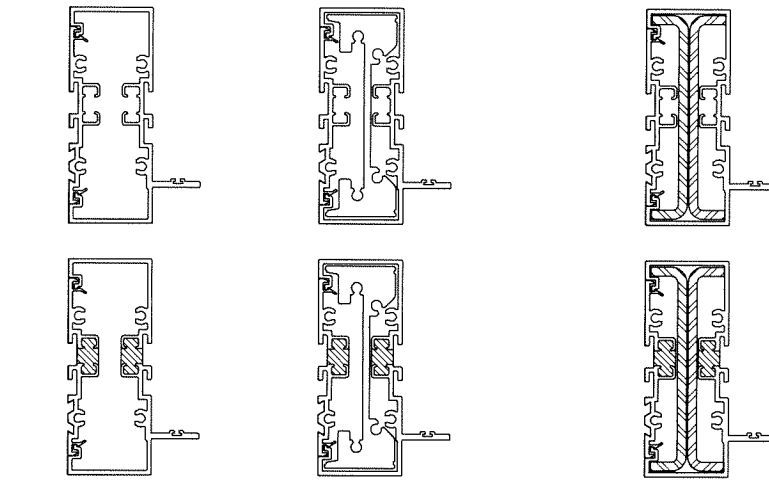
DESIGN LOAD CAPACITY - PSF JAMB/MULLION WITHOUT INTERMEDIATE HORIZONTALS					
NOMINAL DIMS.		JAMB 'J1'	JAMB 'J2'	JAMB 'J3'	
WIDTH (W)	FRAME HEIGHT	MULLION 'M1'	MULLION 'M2'	MULLION 'M3'	
		EXT. (+) INT. (-)	EXT. (+) INT. (-)	EXT. (+) INT. (-)	
30"	78"	120.0	120.0	120.0	
36"		112.5	120.0	120.0	
42"		99.1	120.0	120.0	
48"		89.7	120.0	120.0	
54"		83.0	120.0	120.0	
60"		-	120.0	120.0	
30"	84"	112.4	120.0	120.0	
36"		95.5	120.0	120.0	
42"		83.8	120.0	120.0	
48"		75.4	120.0	120.0	
54"		69.3	120.0	120.0	
60"		-	120.0	120.0	
30"	90"	92.8	120.0	120.0	
36"		79.0	120.0	120.0	
42"		69.4	120.0	120.0	
48"		62.5	120.0	120.0	
54"		-	120.0	120.0	
60"		-	-	120.0	
30"	96"	76.1	120.0	120.0	
36"		64.5	120.0	120.0	
42"		56.5	120.0	120.0	
48"		50.7	120.0	120.0	
54"		-	118.7	120.0	
60"		-	-	120.0	
30"	102"	63.1	120.0	120.0	
36"		53.4	120.0	120.0	
42"		46.7	120.0	120.0	
48"		-	113.3	120.0	
54"		-	-	117.0	
30"	108"	53.0	120.0	120.0	
36"		44.8	120.0	120.0	
42"		39.0	111.8	120.0	
48"		-	99.4	114.0	
30"	114"	44.9	120.0	120.0	
36"		37.9	111.6	120.0	
42"		-	97.1	114.5	
48"		-	-	101.6	
30"	120"	38.4	113.1	120.0	
36"		32.4	95.3	118.7	
42"		-	82.8	102.8	
48"		-	-	91.1	
30"	126"	33.1	97.5	120.0	
36"		-	82.1	107.4	
42"		-	-	92.9	
30"	132"	-	84.6	116.3	
36"		-	71.2	97.6	
42"		-	-	84.4	
30"	138"	-	73.9	106.2	
36"		-	62.1	89.1	
30"	144"	-	65.0	97.4	
36"		-	54.6	81.7	



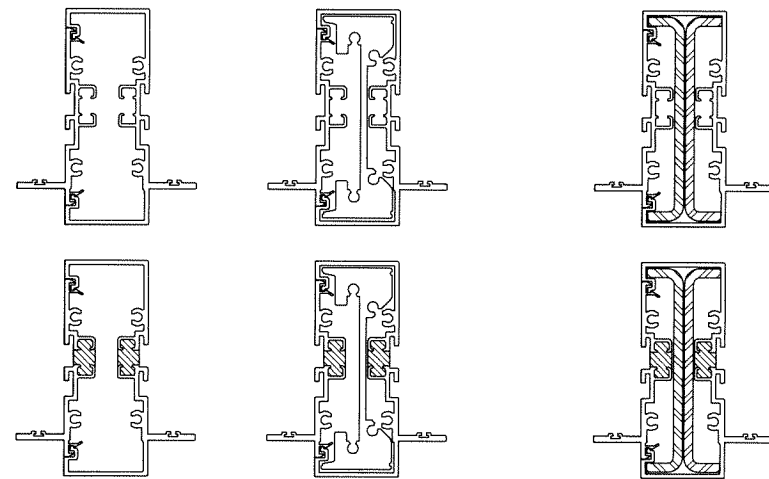
WIDTH (W) = W1  
AT FRAME JAMB

WIDTH (W) =  $\frac{W2 + W3}{2}$   
AT FRAME MULLION

NOTE: INTERPOLATION BETWEEN WIDTHS OR HEIGHTS ALLOWED.



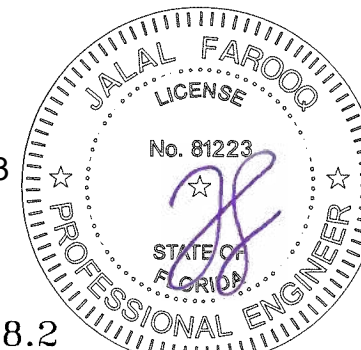
	IX IN <sup>4</sup>	SX IN <sup>3</sup>
JAMB 'J1'	3.634	1.720
JAMB 'J2'	9.241	4.375
JAMB 'J3'	3.634	1.720
ALUMINUM	3.634	1.720
STEEL	4.146	1.951
TOTAL	15.657	
Ix ALUM + Ix STL X 2.9		



	IX IN <sup>4</sup>	SX IN <sup>3</sup>
MULLION 'M1'	3.8536	1.6146
MULLION 'M2'	9.4606	3.9639
MULLION 'M3'	3.8536	1.6146
ALUMINUM	3.8536	1.6146
STEEL	3.836	1.8052
TOTAL	14.8679	
Ix ALUM + Ix STL X 2.9		

MULLIONS

Sealed: 7/11/2023



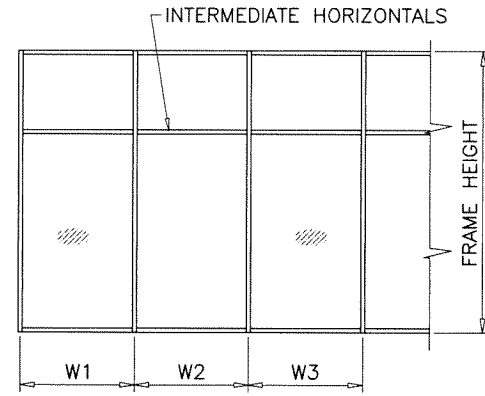
FL #25948.2

**af c**  
**AL-FAROOQ CORPORATION**  
 ENGINEERS & PRODUCT DEVELOPMENT  
 9360 SUNSET DRIVE, SUITE 220 (C.A.N. 3538)  
 MIAMI, FLORIDA 33173  
 TEL. (305) 264-8100 FAX. (305) 262-6978  
 COMP-ANL\18-17F-AGP

SERIES SMI-090 ALUM WINDOW WALL (N.I.)  
**Aldora Aluminum & Glass Products Inc.**  
 4250 Coral Ridge Drive, Suite 101  
 Coral Springs, FL. 33065  
 Tel. (954) 784-6900 Fax. (954) 784-6901

revisions:	no	date	by	description
date:	01-16-18	scale:	-	
dr. by:	TARIQ	chk. by:		
drawing no.	18-17F			
sheet	3 of 10			

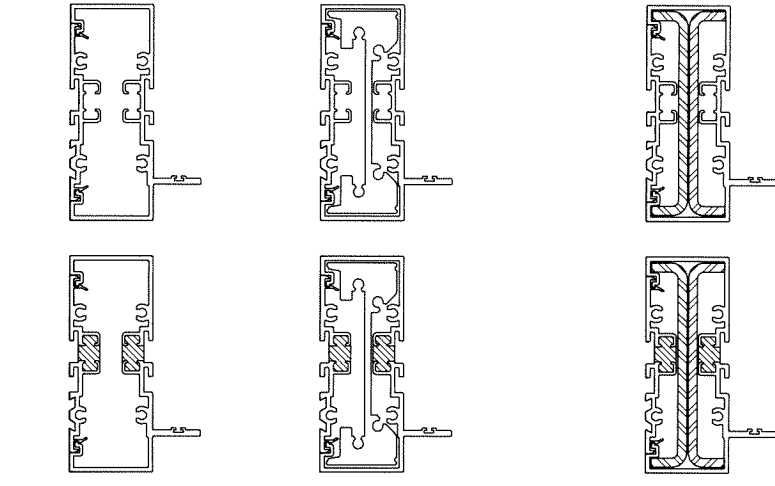
DESIGN LOAD CAPACITY - PSF JAMB/MULLION WITH INTERMEDIATE HORIZONTALS				
NOMINAL DIMS.		JAMB 'J1'	JAMB 'J2'	JAMB 'J3'
WIDTH (W)	FRAME HEIGHT	MULLION 'M1'	MULLION 'M2'	MULLION 'M3'
		EXT. (+) INT. (-)	EXT. (+) INT. (-)	EXT. (+) INT. (-)
30"	78"	120.0	120.0	120.0
36"		104.7	120.0	120.0
42"		89.8	120.0	120.0
48"		78.5	120.0	120.0
54"		69.8	120.0	120.0
60"		-	120.0	120.0
30"	84"	107.7	120.0	120.0
36"		89.8	120.0	120.0
42"		76.9	120.0	120.0
48"		67.3	120.0	120.0
54"		59.8	120.0	120.0
60"		-	120.0	120.0
30"	90"	89.0	120.0	120.0
36"		74.2	120.0	120.0
42"		63.6	120.0	120.0
48"		55.6	120.0	120.0
54"		-	120.0	120.0
60"		-	-	120.0
30"	96"	73.3	120.0	120.0
36"		61.1	120.0	120.0
42"		52.4	120.0	120.0
48"		45.8	119.7	120.0
54"		-	106.4	120.0
60"		-	-	108.0
30"	102"	61.1	120.0	120.0
36"		50.9	120.0	120.0
42"		43.7	120.0	120.0
48"		-	105.2	119.6
54"		-	-	106.3
60"		-	-	-
30"	108"	51.5	120.0	120.0
36"		42.9	120.0	120.0
42"		36.8	106.3	120.0
48"		-	93.0	106.7
54"		-	-	-
60"		-	-	-
30"	114"	43.8	120.0	120.0
36"		36.5	107.5	120.0
42"		-	92.1	109.4
48"		-	-	95.7
54"		-	-	-
60"		-	-	-
30"	120"	37.5	110.6	120.0
36"		31.3	92.1	115.2
42"		-	79.0	98.7
48"		-	-	86.4
54"		-	-	-
60"		-	-	-
30"	126"	32.4	95.5	120.0
36"		-	79.6	104.5
42"		-	-	89.6
48"		-	-	-
54"		-	-	-
60"		-	-	-
30"	132"	-	83.1	114.3
36"		-	69.2	95.2
42"		-	-	81.6
48"		-	-	-
54"		-	-	-
60"		-	-	-
30"	138"	-	72.7	104.5
36"		-	60.6	87.1
42"		-	-	-
48"		-	-	-
54"		-	-	-
60"		-	-	-
30"	144"	-	64.0	96.0
36"		-	53.3	80.0
42"		-	-	-
48"		-	-	-
54"		-	-	-
60"		-	-	-



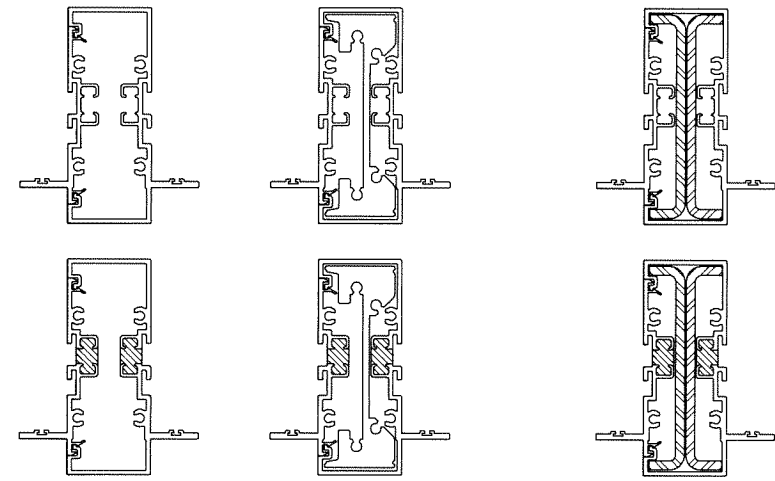
WIDTH (W) = W1  
AT FRAME JAMB

WIDTH (W) =  $\frac{W2 + W3}{2}$   
AT FRAME MULLION

NOTE:  
INTERPOLATION BETWEEN WIDTHS OR HEIGHTS ALLOWED.



JAMB 'J1'		JAMB 'J2'		JAMB 'J3'	
Ix IN <sup>4</sup>	Sx IN <sup>3</sup>	Ix IN <sup>4</sup>	Sx IN <sup>3</sup>	Ix IN <sup>4</sup>	Sx IN <sup>3</sup>
3.634	1.720	9.241	4.375	3.634	1.720
ALUMINUM		ALUMINUM		STEEL	
3.634		4.146		1.951	
TOTAL		TOTAL		TOTAL	
Ix ALUM + Ix STL X 2.9		Ix ALUM + Ix STL X 2.9		Ix ALUM + Ix STL X 2.9	
15.657		15.657		15.657	

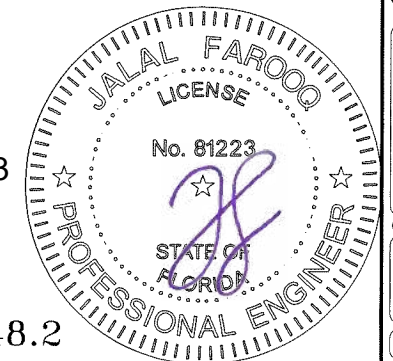


MULLION 'M1'		MULLION 'M2'		MULLION 'M3'	
Ix IN <sup>4</sup>	Sx IN <sup>3</sup>	Ix IN <sup>4</sup>	Sx IN <sup>3</sup>	Ix IN <sup>4</sup>	Sx IN <sup>3</sup>
3.8536	1.6146	9.4606	3.9639	3.8536	1.6146
ALUMINUM		ALUMINUM		STEEL	
3.8536		3.836		1.8052	
TOTAL		TOTAL		TOTAL	
Ix ALUM + Ix STL X 2.9		Ix ALUM + Ix STL X 2.9		Ix ALUM + Ix STL X 2.9	
14.8679		14.8679		14.8679	

MULLIONS

Sealed: 7/11/2023

FL #25948.2



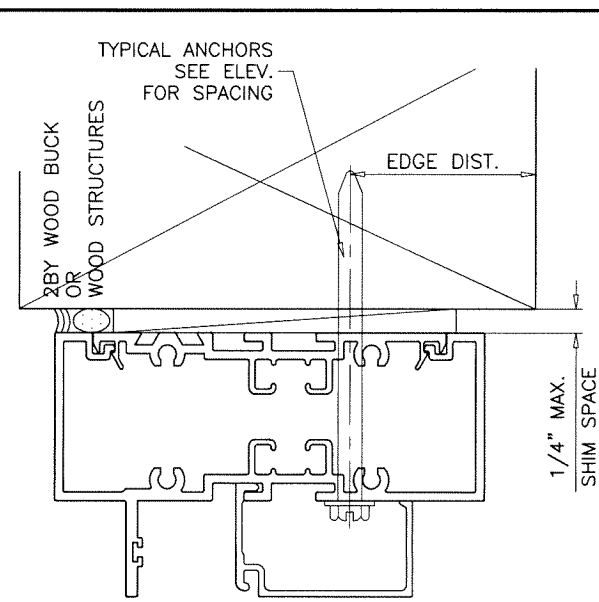
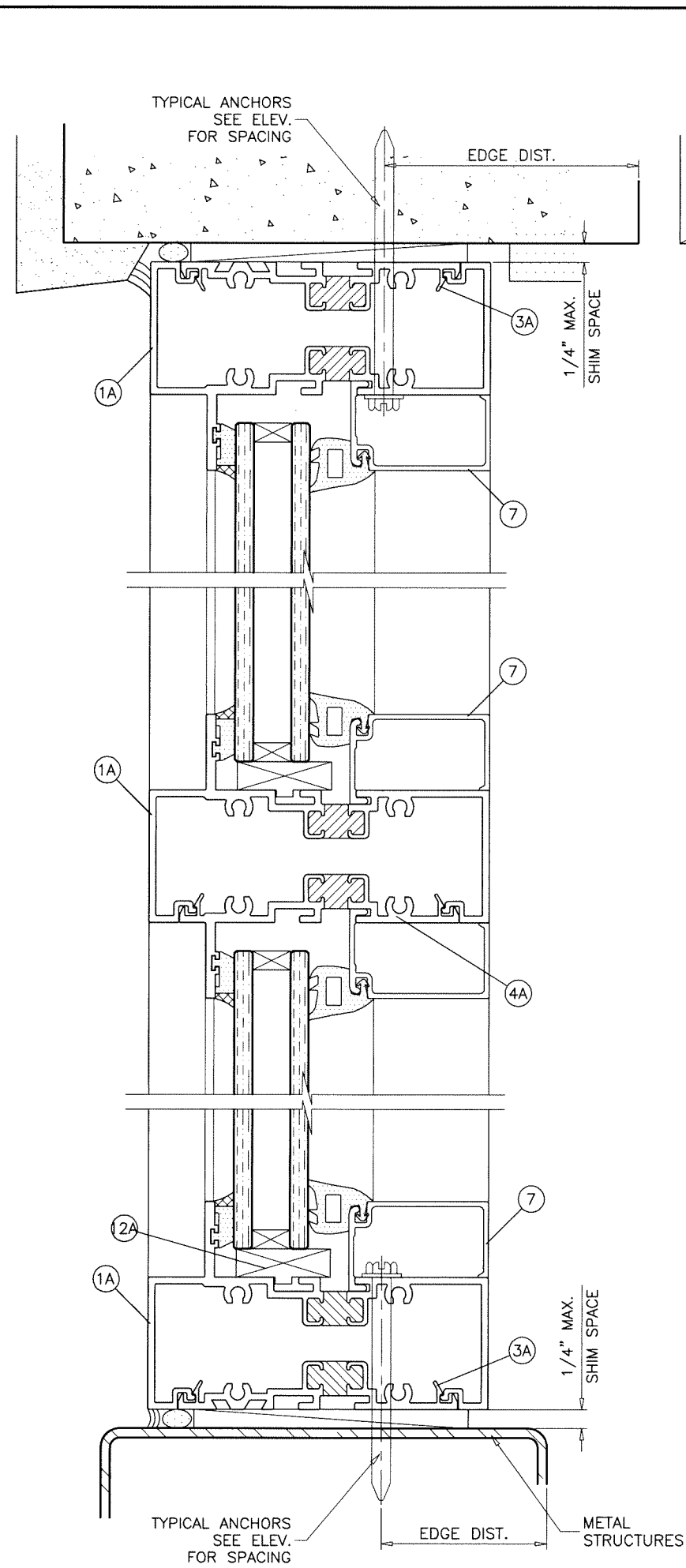
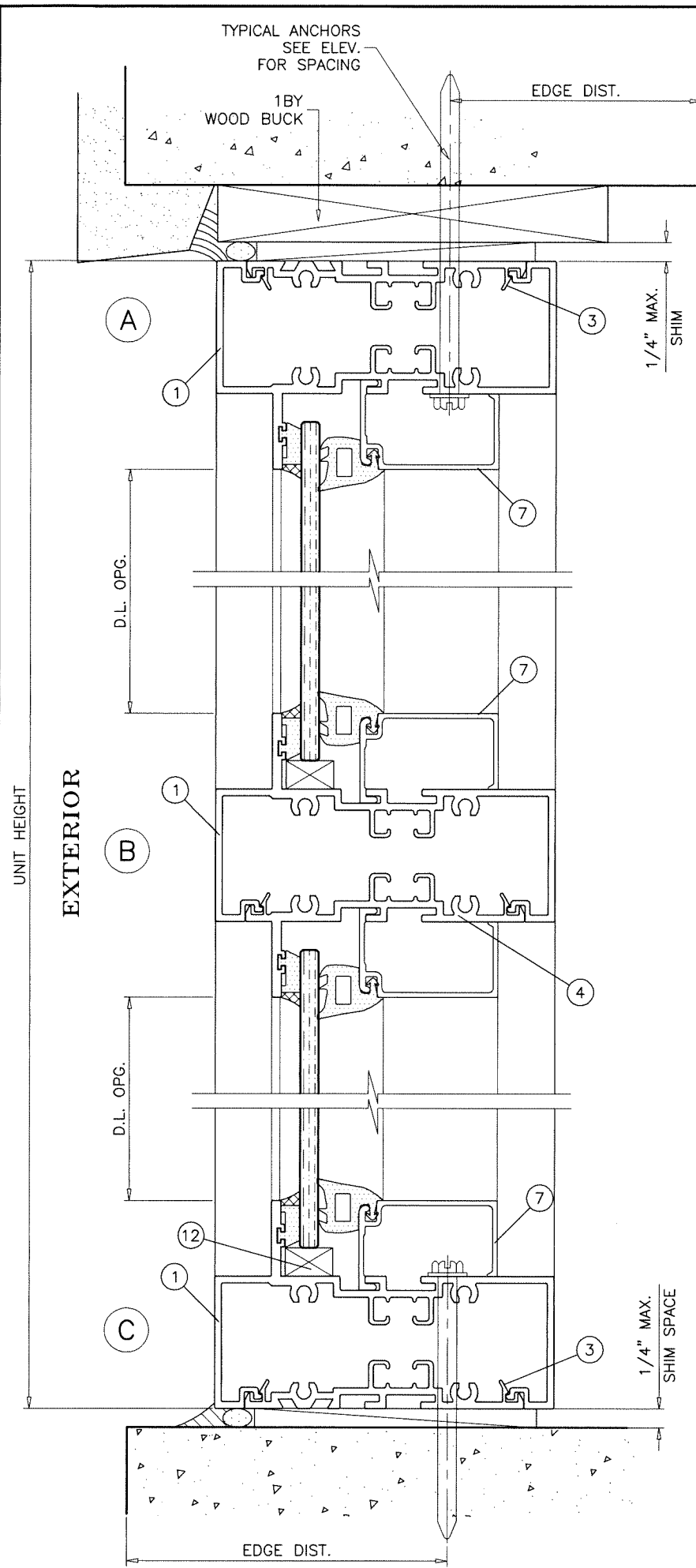
**af c**  
**AL-FAROOQ CORPORATION**  
 ENGINEERS & PRODUCT DEVELOPMENT  
 9360 SUNSET DRIVE, SUITE 220 (C.A.N. 3538)  
 MIAMI, FLORIDA 33173  
 TEL. (305) 264-8100 FAX. (305) 262-6978  
 COMP-ANL 18-17F-AGP

SERIES SMI-090 ALUM WINDOW WALL (N.I.)  
**Aldora Aluminum & Glass Products Inc.**  
 4250 Coral Ridge Drive, Suite 101  
 Coral Springs, FL. 33065  
 Tel. (954) 784-6900 Fax. (954) 784-6901

revisions:	no	date	by	description

date: 01-16-18	scale: -	dr. by: TARIQ	chk. by:
drawing no. 18-17F			
sheet 4 of 10			

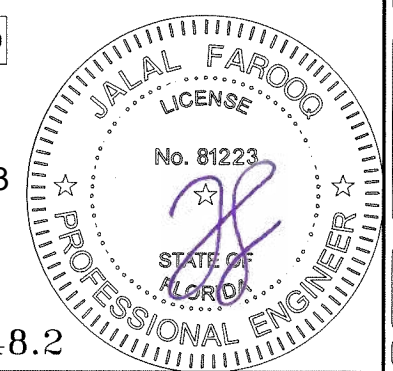




INTERIOR GLAZED

Sealed: 7/11/2023

FL #25948.2



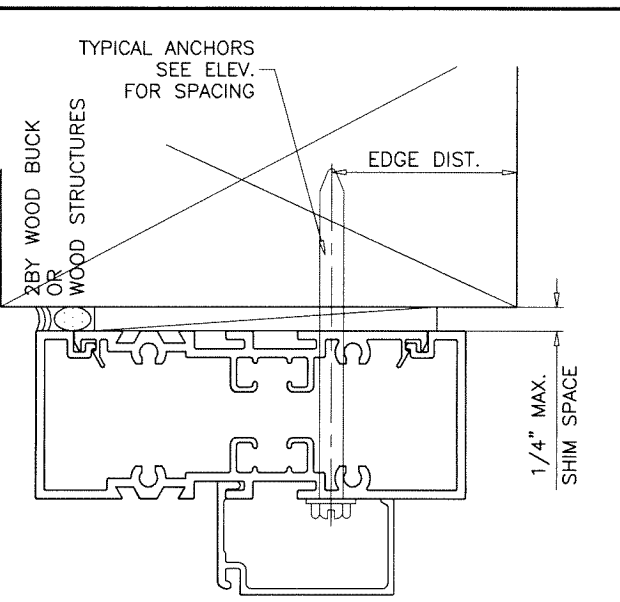
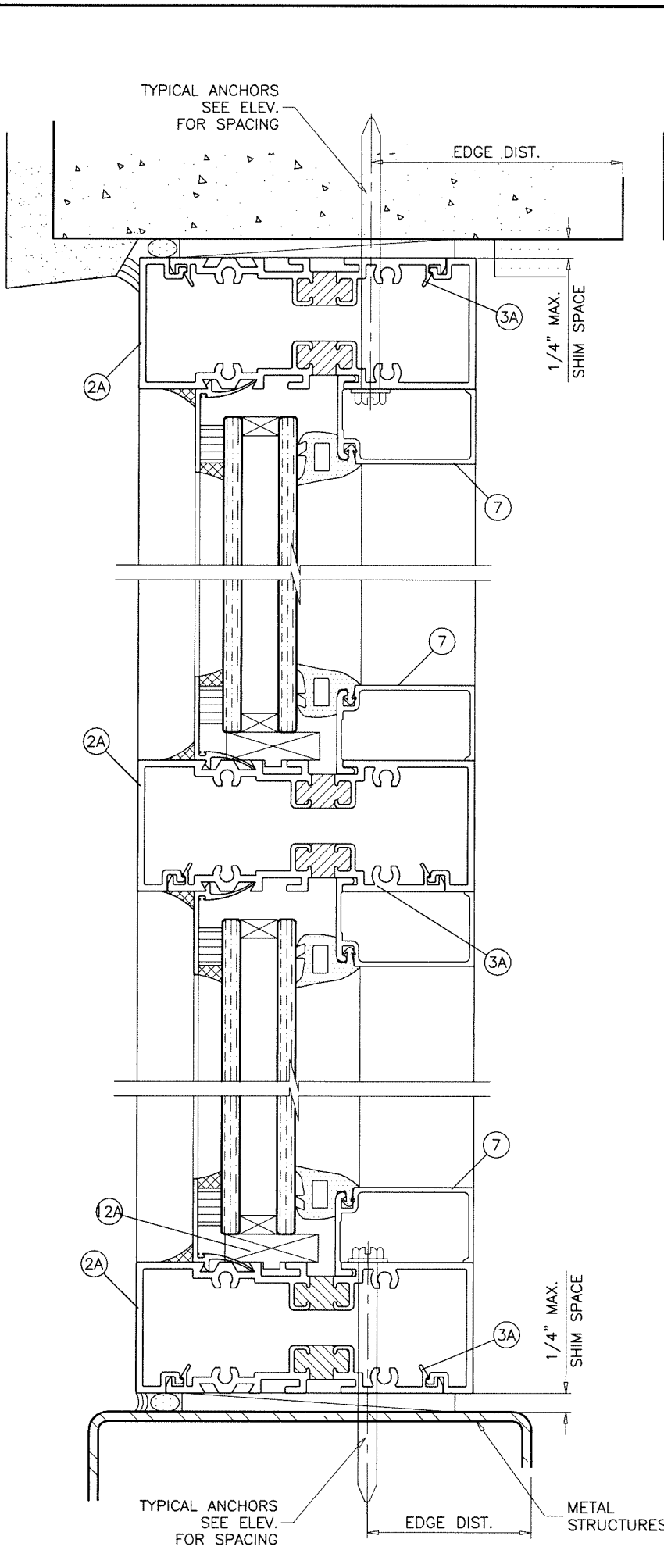
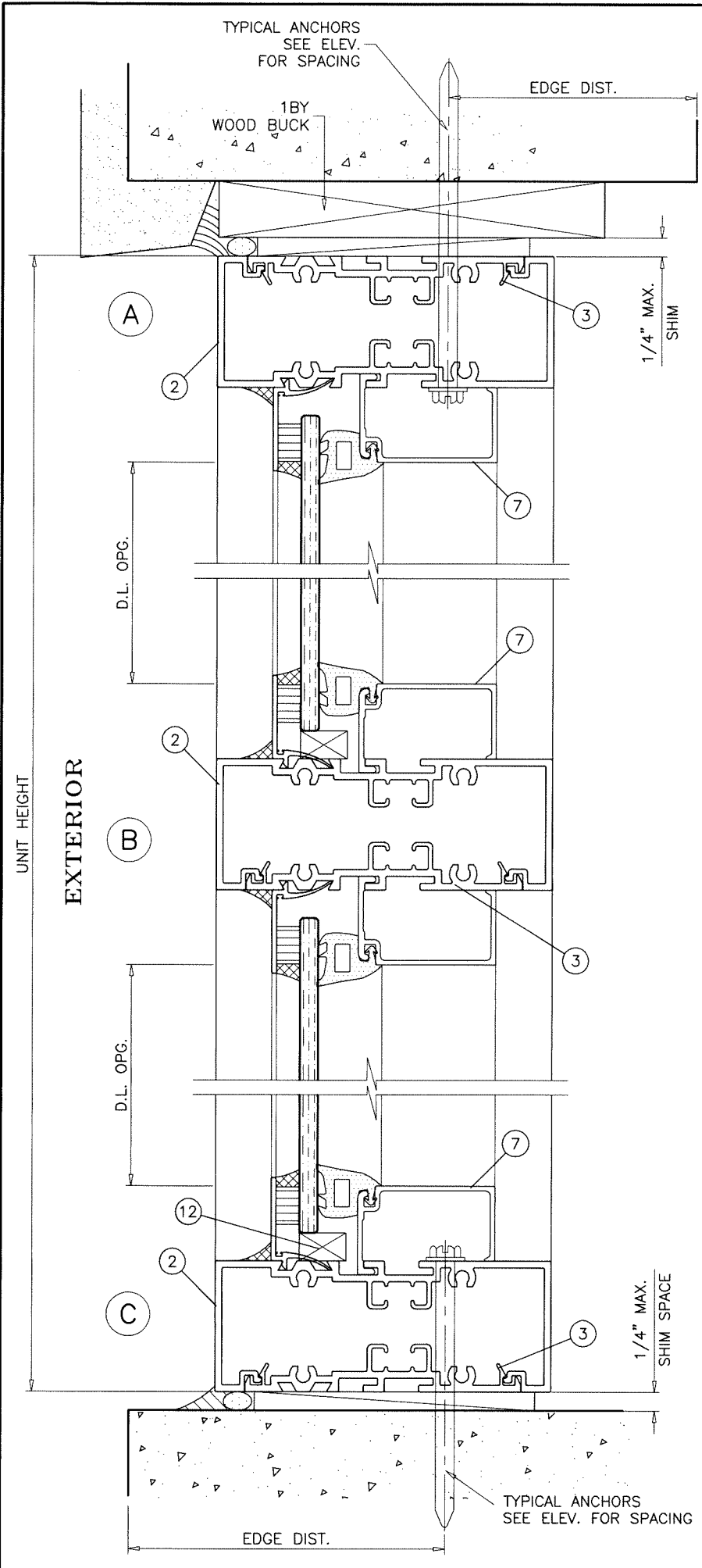
**af c**  
**AL-FAROOQ CORPORATION**  
 ENGINEERS & PRODUCT DEVELOPMENT  
 9360 SUNSET DRIVE, SUITE 220 (C.A.N. 3538)  
 MIAMI, FLORIDA 33173  
 TEL. (305) 264-8100 FAX. (305) 262-6978  
 COMP-ANL\18-17F-AGP

SERIES SMI-090 ALUM WINDOW WALL (N.I.)  
**Aldora Aluminum & Glass Products Inc.**  
 4250 Coral Ridge Drive, Suite 101  
 Coral Springs, FL. 33065  
 Tel. (954) 784-6900 Fax. (954) 784-6901

revisions:	no	date	by	description

date: 01-16-18  
 scale: 1/2" = 1"  
 dr. by: TARIQ  
 chk. by:

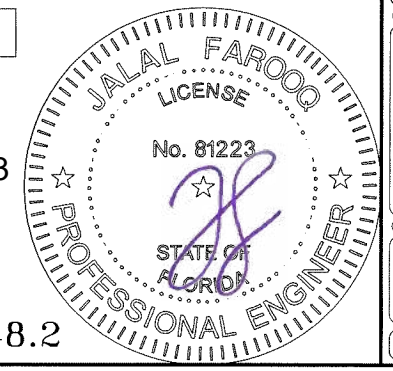
drawing no.  
**18-17F**  
 sheet 6 of 10



EXTERIOR GLAZED

Sealed: 7/11/2023

FL #25948.2



**af c**  
**AL-FAROOQ CORPORATION**  
 ENGINEERS & PRODUCT DEVELOPMENT  
 9360 SUNSET DRIVE, SUITE 220 (C.A.N. 3538)  
 MIAMI, FLORIDA 33173  
 TEL. (305) 264-8100 FAX. (305) 262-6978  
 COMP-ANL 18-17F-AGP

SERIES SMI-090 ALUM WINDOW WALL (N.I.)  
**Aldora Aluminum & Glass Products Inc.**  
 4250 Coral Ridge Drive, Suite 101  
 Coral Springs, FL. 33065  
 Tel. (954) 784-6900 Fax. (954) 784-6901

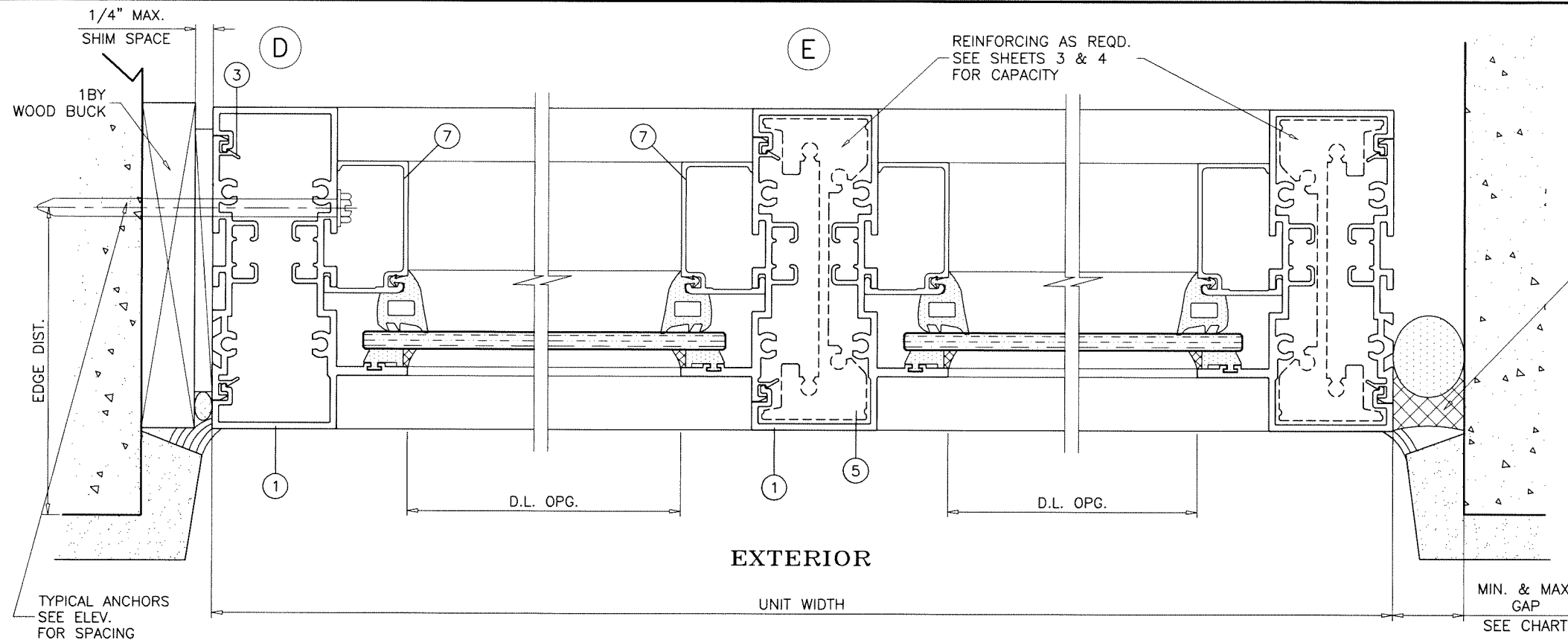
revisions:	no	date	by	description

date: 01-16-18	scale: 1/2" = 1"
dr. by: TARIQ	chk. by:

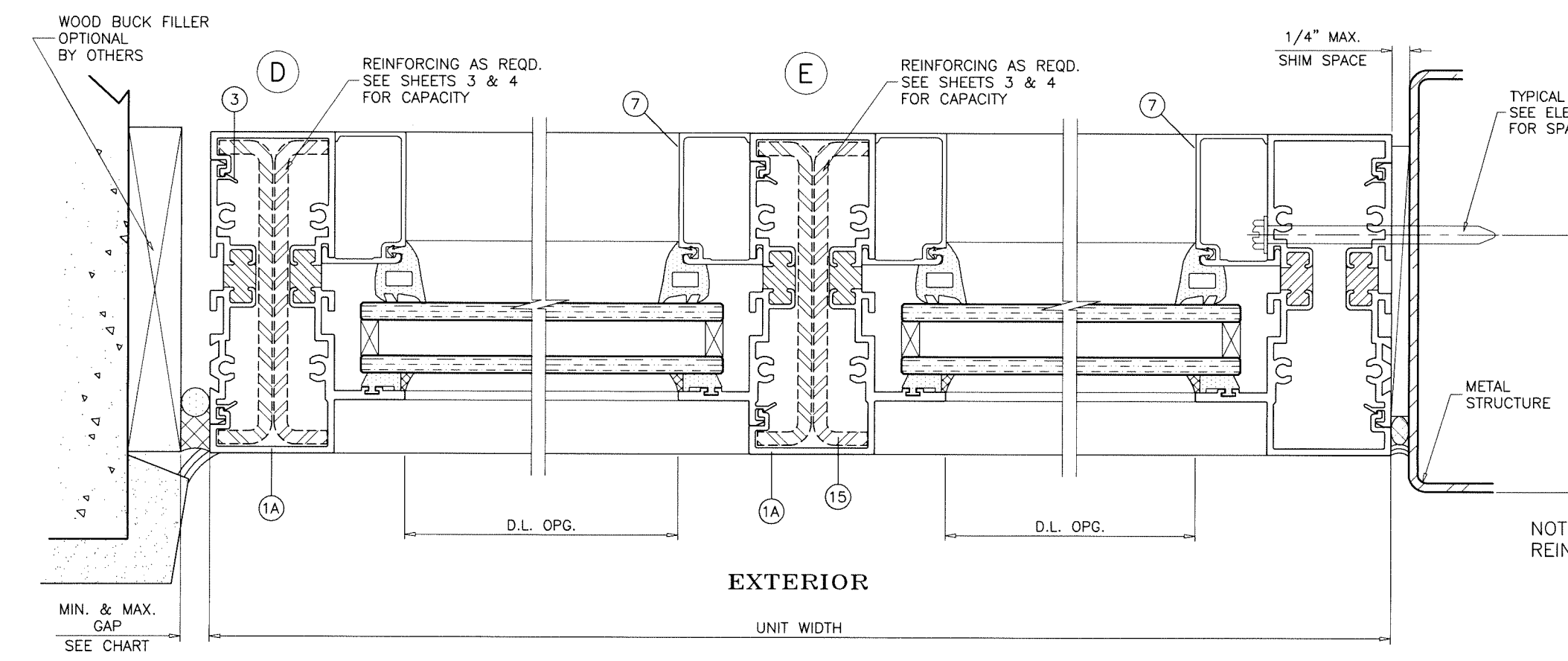
drawing no.	18-17F
sheet	7 of 10



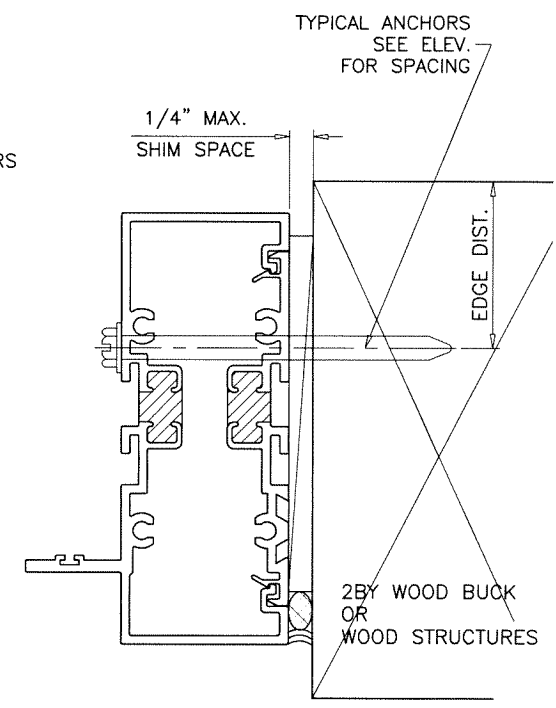
SILICONE  
DOW CORNING CCS  
DEPTH = 3/8" MIN.

MAX. FRAME HEIGHT	GAP	
	MIN.	MAX.
72"	3/8"	1"
96"	1/2"	1"
120"	5/8"	1"
144"	3/4"	1"

MIN. & MAX.  
GAP  
SEE CHART



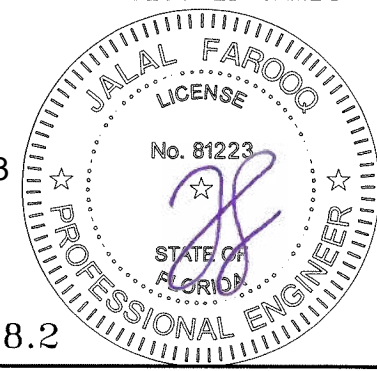
NOTE:  
REINFORCINGS NOT REQUIRED AT SECURED JAMBS



INTERIOR OR EXTERIOR GLAZED

Sealed: 7/11/2023

FL #25948.2



**af c**  
**AL-FAROOQ CORPORATION**  
ENGINEERS & PRODUCT DEVELOPMENT  
9360 SUNSET DRIVE, SUITE 220 (C.A.N. 3538)  
MIAMI, FLORIDA 33173  
TEL. (305) 264-8100 FAX. (305) 262-6978  
COMP-ANL 18-17F-AGP

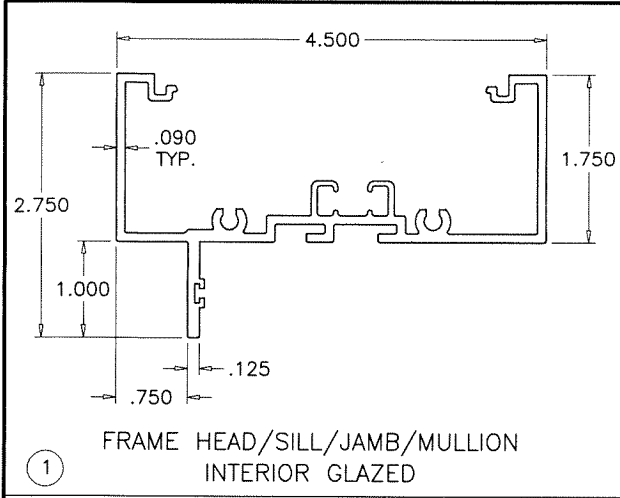
SERIES SMI-090 ALUM WINDOW WALL (N.I.)  
**Aldora Aluminum & Glass Products Inc.**  
4250 Coral Ridge Drive, Suite 101  
Coral Springs, FL. 33065  
Tel. (954) 784-6900 Fax. (954) 784-6901

revisions:	no	date	by	description

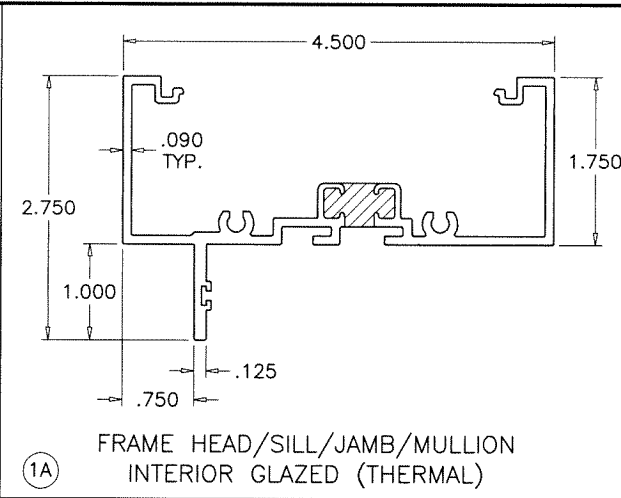
date: 01-16-18	scale: 1/2" = 1"	dr. by: TARIQ	chk. by:
----------------	------------------	---------------	----------

drawing no.  
**18-17F**  
sheet 8 of 10

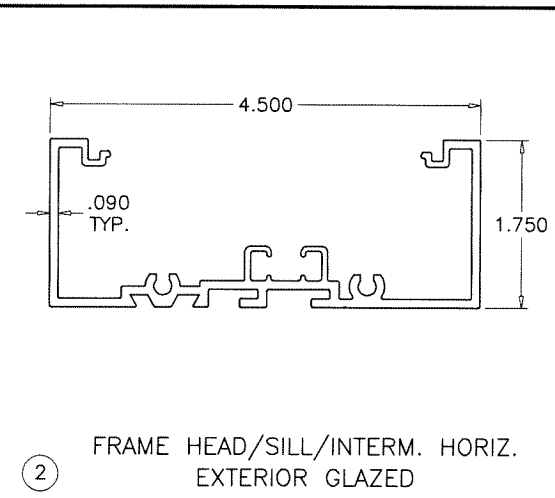




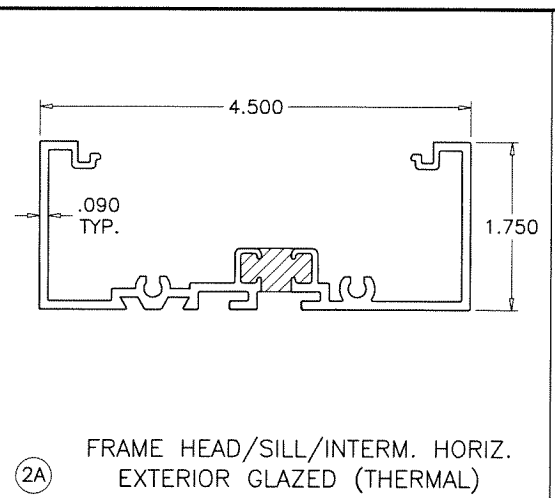
① FRAME HEAD/SILL/JAMB/MULLION INTERIOR GLAZED



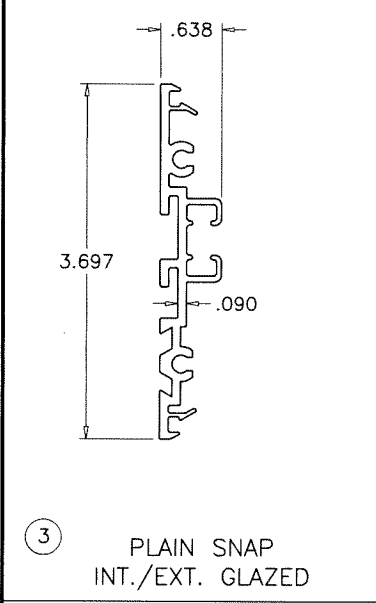
①A FRAME HEAD/SILL/JAMB/MULLION INTERIOR GLAZED (THERMAL)



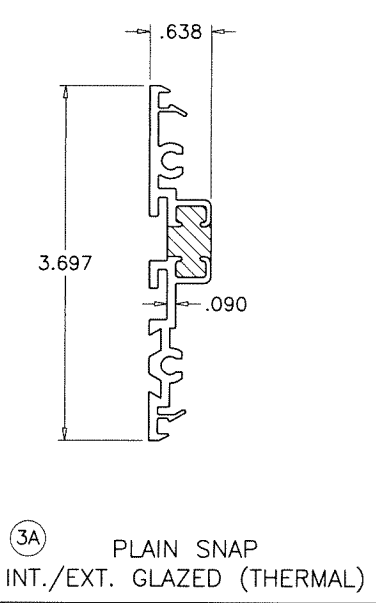
② FRAME HEAD/SILL/INTERM. HORIZ. EXTERIOR GLAZED



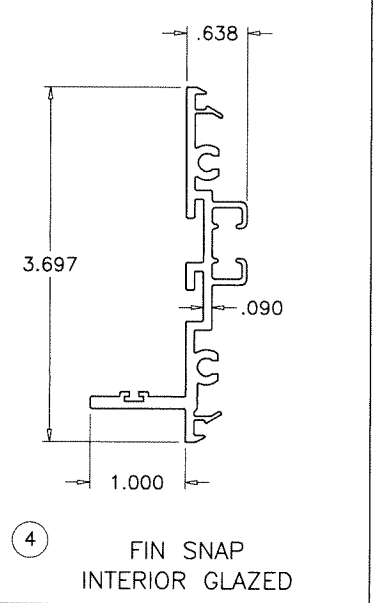
②A FRAME HEAD/SILL/INTERM. HORIZ. EXTERIOR GLAZED (THERMAL)



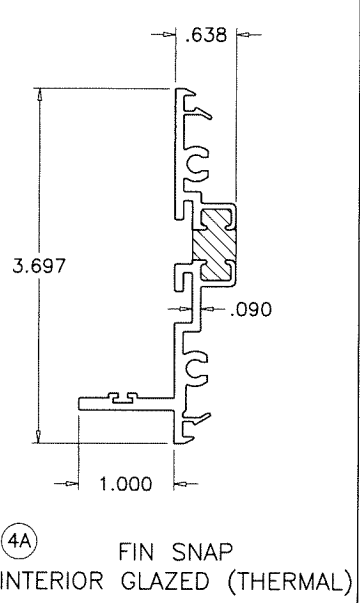
③ PLAIN SNAP INT./EXT. GLAZED



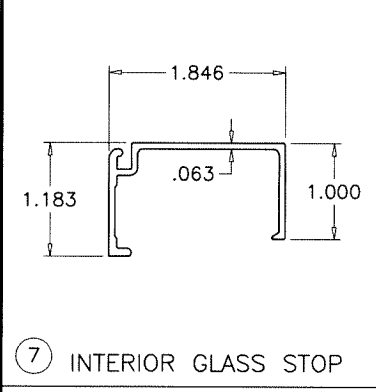
③A PLAIN SNAP INT./EXT. GLAZED (THERMAL)



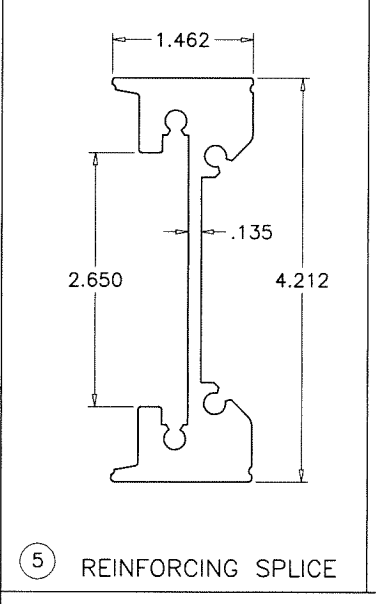
④ FIN SNAP INTERIOR GLAZED



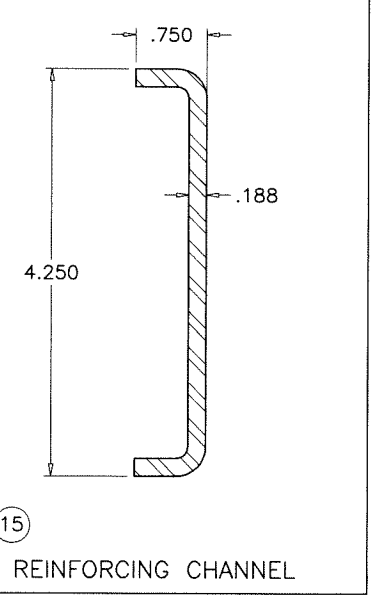
④A FIN SNAP INTERIOR GLAZED (THERMAL)



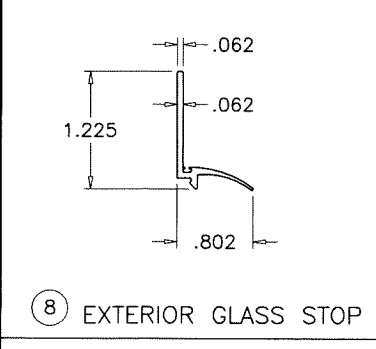
⑦ INTERIOR GLASS STOP



⑤ REINFORCING SPLICE

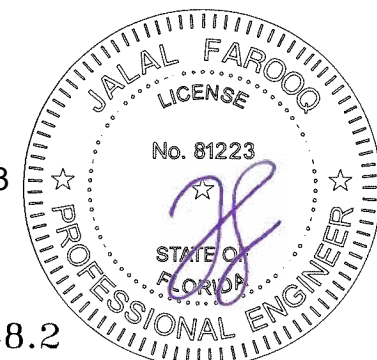


⑮ REINFORCING CHANNEL



⑧ EXTERIOR GLASS STOP

Sealed: 7/11/2023



FL #25948.2

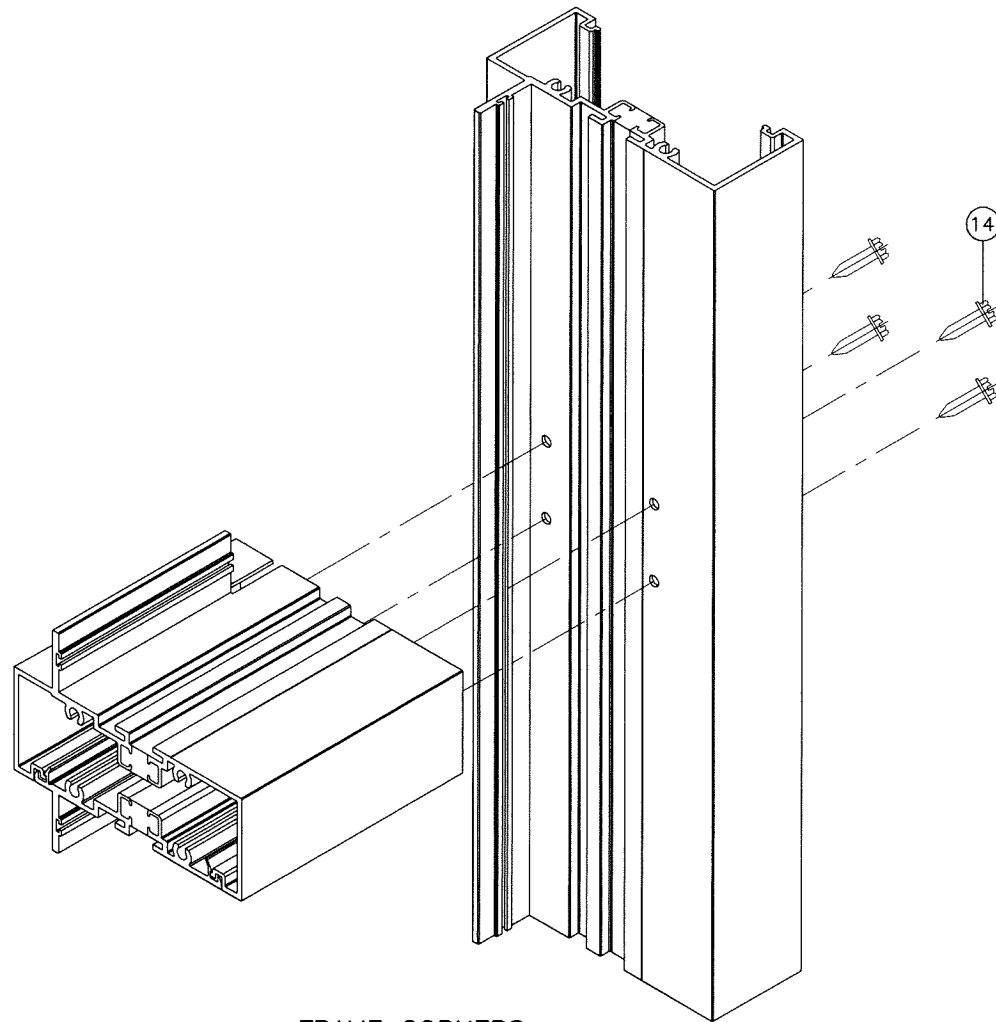
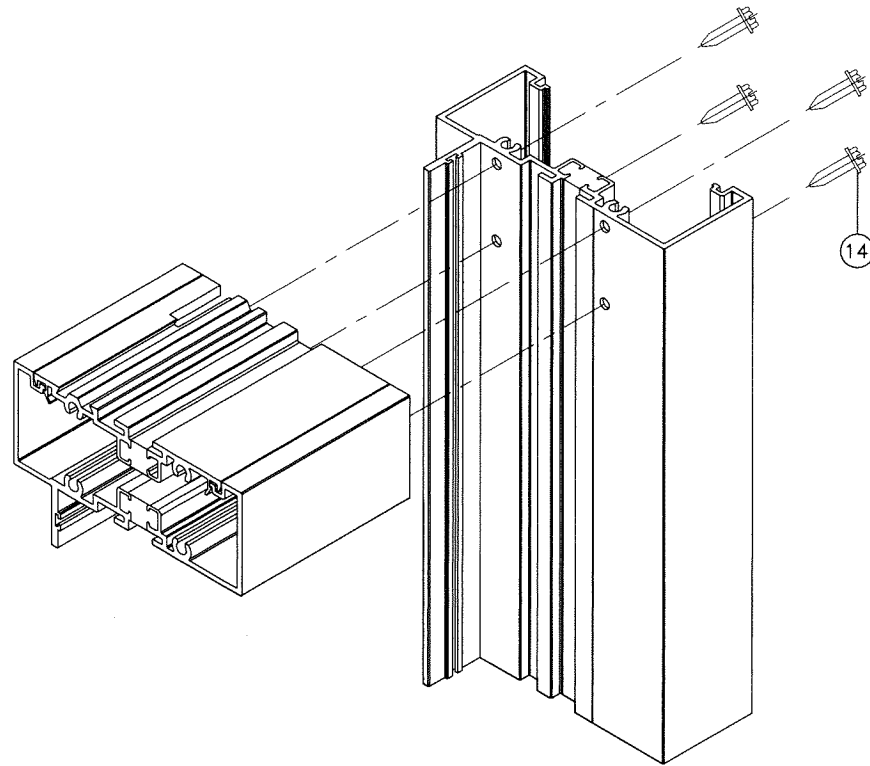
**af c**  
**AL-FAROOQ CORPORATION**  
 ENGINEERS & PRODUCT DEVELOPMENT  
 9360 SUNSET DRIVE, SUITE 220  
 MIAMI, FLORIDA 33173 (C.A.N. 3538)  
 TEL. (305) 264-8100 FAX. (305) 262-6978  
 COMP-ANL\18-17F-AGP

SERIES SMI-090 ALUM WINDOW WALL (N.I.)  
**Aldora Aluminum & Glass Products Inc.**  
 4250 Coral Ridge Drive, Suite 101  
 Coral Springs, FL. 33065  
 Tel. (954) 784-6900 Fax. (954) 784-6901

no	date	by	description

date: 01-16-18  
 scale: 1/2" = 1"  
 dr. by: TARIQ  
 chk. by:

drawing no.  
**18-17F**  
 sheet 9 of 10



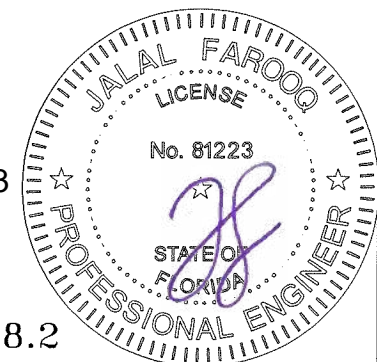
FRAME CORNERS

ITEM #	PART #	QUANTITY	DESCRIPTION	MATERIAL	MANF./SUPPLIER/REMARKS
1	SMI-091	AS REQD.	INT. GLAZED FRAME HEAD/SILL/JAMB/MULLION	6063-T6	SMI SYSTEMS
1A	SMI-091T	AS REQD.	INT. GLAZED FRAME HEAD/SILL/JAMB/MULLION (POUR & DEBRIDGE)	6063-T6	SMI SYSTEMS
2	SMI-098	AS REQD.	EXT. GLAZED FRAME HEAD/SILL/INTERM. HORIZ.	6063-T6	SMI SYSTEMS
2A	SMI-098T	AS REQD.	EXT. GLAZED FRAME HEAD/SILL/INTERM. HORIZ. (POUR & DEBRIDGE)	6063-T6	SMI SYSTEMS
3	SMI-094	AS REQD.	INT./EXT. GLAZED PLAIN SNAP	6063-T6	SMI SYSTEMS
3A	SMI-094T	AS REQD.	INT./EXT. GLAZED PLAIN SNAP (POUR & DEBRIDGE)	6063-T6	SMI SYSTEMS
4	SMI-093	AS REQD.	INT./EXT. GLAZED FIN SNAP	6063-T6	SMI SYSTEMS
4A	SMI-093T	AS REQD.	INT./EXT. GLAZED FIN SNAP (POUR & DEBRIDGE)	6063-T6	SMI SYSTEMS
5	SMI-095	AS REQD.	REINFORCING SPLICE	6005-T5	SMI SYSTEMS
7	SMI-092	AS REQD.	INTERIOR GLASS STOP	6063-T6	SMI SYSTEMS
8	SMI-097	AS REQD.	EXTERIOR GLASS STOP	6063-T6	SMI SYSTEMS
9	SMI-G08	AS REQD.	INTERIOR GASKET (DUROMETER 70±5)	EPDM	CENTRAL PLASTICS INC.
10	SMI-G02	AS REQD.	SINGLE FACE TAPE (3/8" X 1/2")	VINYL FOAM	FRANK LOWE
11	SMI-G07	AS REQD.	EXTERIOR GASKET (DUROMETER 70±5)	EPDM	CENTRAL PLASTICS INC.
12	SMI-SB06	2/ LITE	SETTING BLOCK MONOLITHIC GLASS (3/8" X 5/8" X 4" LG.) (DUROMETER 85±5)	EPDM	CENTRAL PLASTICS INC.
12A	SMI-SB04	2/ LITE	SETTING BLOCK INSUL. GLASS (3/8" X 1-1/4" X 4" LG.) (DUROMETER 85±5)	EPDM	CENTRAL PLASTICS INC.
13	SMI-P04	AS REQD.	THERMAL BRAKE SPACER FOR ALUM SPLICE	RIGID PVC	CENTRAL PLASTICS INC.
14	#12 X 1-1/2"	4/ CORNER	FRAME ASSEMBLY SCREWS	ST. STEEL	HEX. HEAD MACHINE SCREWS
15	-	AS REQD.	REINFORCING CHANNEL (36 KSI MIN.)	STEEL	-

**SEALANTS:**

ALL FRAME CORNERS, JOINTS, MULLION SEAMS AND PERIMETER OF GLAZING BEAD TO FRAME TO BE SEALED WITH DOW CORNING CWS, GE 2000 OR PECORA 895 SILICONE SEALANT.

Sealed: 7/11/2023



FL #25948.2

**AL-FAROOQ CORPORATION**  
 ENGINEERS & PRODUCT DEVELOPMENT  
 9360 SUNSET DRIVE, SUITE 220  
 MIAMI, FLORIDA 33173  
 TEL. (305) 264-8100 FAX. (305) 262-6978  
 (C.A.N. 3538)

SERIES SMI-090 ALUM WINDOW WALL (N.I.)  
**Aldora Aluminum & Glass Products Inc.**  
 4250 Coral Ridge Drive, Suite 101  
 Coral Springs, FL. 33065  
 Tel. (954) 784-6900 Fax. (954) 784-6901

revisions:	no	date	by	description	
date:	01-16-18	scale:	1/2" = 1"	dr. by:	TARIQ
				chk. by:	
drawing no.		18-17F			
sheet 10 of 10					

COMP-ANL \ 18-17F-AGP