



VistaView by Aldora

LIMITED WARRANTY

This Limited Warranty applies to VistaView by Aldora exterior doors and windows purchased on or after the Effective Date from an authorized VistaView by Aldora dealer with installation in the U.S. THIS LIMITED WARRANTY IS RESTRICTED TO THE ORIGINAL OWNER OF THE STRUCTURE IN WHICH THE PRODUCTS ARE ORIGINALLY INSTALLED AND IS NONTRANSFERABLE, NONASSIGNABLE, AND CANNOT BE EXTENDED BY OPERATION OF LAW OR OTHERWISE BEYOND THE FIRST OWNER. IT REPLACES ALL PREVIOUS WARRANTIES.





EXCLUSIVE REMEDY

This Limited Warranty and warranty notice periods begins on the original date of product purchase. It is not a warranty of future performance. In accordance with the terms of the Limited Warranty, if a covered defect is reported within the term of the applicable warranty notice period, VistaView by Aldora will determine whether to refund the price paid for the defective product or component, or replace or repair the defective product or component. Although VistaView by Aldora will make an effort to use original parts, replacement parts may vary from original parts. Replacement parts, including upgrades, are covered for the remainder of the original product warranty. Costs for removal, installation, finishing, refinishing and disposal services are excluded.

SCREENS AND HARDWARE

The Limited Warranty covers screen manufacturing defects for three (3) years. Screens are not intended to prevent falls. The Limited Warranty for hardware and moving components covers manufacturing defects resulting in impaired mechanical operation or function for five (5) years. WARRANTY EXCLUSIONS INCLUDE NATURALLY OCCURRING CHANGES AND NORMAL WEAR AND TEAR SUCH AS CORROSION, EROSION, OXIDATION, TARNISH, AND DISCOLORATION OF FINISHES.

GLASS

The Limited Warranty covers standard insulating glass for seal failure caused by manufacturing defects that results in visible obstruction through the glass for ten (10) years. DISTORTION, BUBBLES, DISCOLORATIONS, AND BLURS ARE INHERENT QUALITIES OF GLASS AND ARE EXCLUDED FROM THE LIMITED WARRANTY.

FRAME

The Limited Warranty covers extruded aluminum components for manufacturing defects resulting in the loss of structural integrity for ten (10) years. COLOR VARIATION AND PROCESSING MARKS ARE NOT CONSIDERED DEFECTS AND ARE EXCLUDED FROM THE LIMITED WARRANTY.

FINISH

The Limited Warranty covers Kynar®, TCI® and other AAMA 2605 finishes for manufacturing defects resulting in chalk and fade for ten (10) years, per applicable sections of the American Architectural Manufacturer's Association's (AAMA) Specification 2605-17.

- The Limited Warranty covers 2605 finishes installed in non-coastal environments for loss of adhesion (peel) for ten (10) years.
- The Limited Warranty covers 2605 finishes installed within three (3) miles of a seacoast or saltwater environment for manufacturing defects that cause abnormal deterioration

(damage to the finish such as blistering, peeling or flaking) beyond what is normal for an ocean coastline environment caused by loss of adhesion and/or corrosion for ten (10) years.

- The Limited Warranty covers woodgrain finishes for manufacturing defects resulting in delamination for five (5) years.
- The Limited Warranty covers 2604 standard powder coating finishes for manufacturing defects resulting in peel or blister for five (5) years.
- The limited warranty covers 2604 finishes installed within 3 miles of seacoast or saltwater for one (1) year.
- Anodized finishes are warranted for one (1) year.

PARTS (DISCONTINUED OR OBSOLETE)

Parts indicated by VistaView by Aldora as discontinued or obsolete at the time of sale are covered for manufacturing defects for one (1) year.

EXCLUSIONS

The Limited Warranty excludes defects, damage or problems resulting from causes outside VistaView by Aldora's control. Without limitation, exclusions include the following:



THERMAL EFFICIENCY

The percentage or amount of argon or other inert gas present in insulating glass at any time after manufacture is not warranted. Over time, inert gas dissipates. There are no specific levels of thermal efficiency warranted as maintained by low emissivity coatings, inert gas or other product features. Thermal efficiencies vary with the product application.

CORROSION

Follow the care and maintenance recommendations of AMMA 609 and 210-02 (Cleaning and Maintenance Guide for Architecturally Finished Aluminum).

The Limited Warranty excludes corrosion or finish failure due to environmental conditions such as air pollutants, acid rain, salt, sand, chemicals or other corrosive substances for:

- Aluminum cladding
- Anodized and other specialty finishes
- Hardware or other components

WATER AND CONDENSATION

The Limited Warranty does not cover damage caused by water or moisture. Water and moisture infiltration occurs in all types of construction and must be managed by a wall system.

Condensation is the result of excess humidity and is not considered a product defect. Condensation, frost, fungus, mildew or mold on product surfaces are excluded from the warranty.

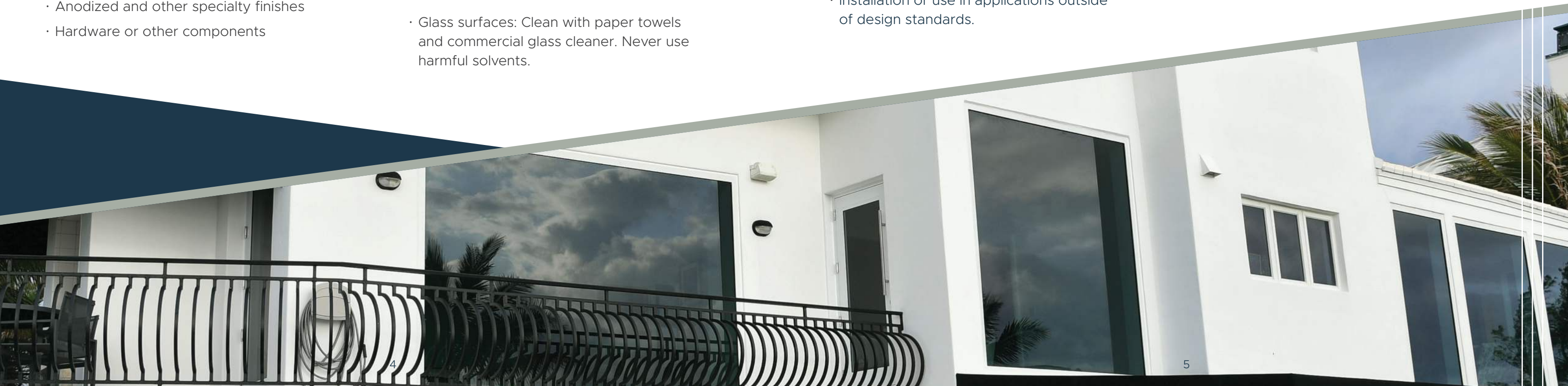
MAINTENANCE

Failure to properly maintain the product results in a voided warranty. Products installed in coastal applications require more frequent maintenance and cleaning. Routine maintenance includes but is not limited to:

- Aluminum, glass and weather stripping: Wash with a soft rag and mild soap solution.
- Hardware on windows and doors: Clean, clear debris and lubricate.
- Glass surfaces: Clean with paper towels and commercial glass cleaner. Never use harmful solvents.

ACTS OF GOD, INSTALLATION AND MAINTENANCE

- Normal wear and tear, normal fading or discoloration of finishes.
- Loss of power, power surges, battery corrosion or failure.
- Extreme weather events, including but not limited to hurricanes or wind-driven water.
- Unusual or extreme atmospheric conditions.
- Civil unrest, terrorism, war, insurrection, vandalism, government restrictions, acts of aggression or Acts of God.
- Failure to follow VistaView by Aldora's care and maintenance instructions.
- Misuse, modification, alternation, abuse, accident or negligence.
- Incompatibility or integration with any third-party product or system.
- Use of razor blades or inappropriate chemicals or cleaners.
- Installation or use in applications outside of design standards.
- Installation out of conformance with applicable building codes and best practices.
- Installation or use near saunas, hot tubs, pools or other sources of chlorine or high-humidity environments.
- Non-standard installation (upside down, out-of-square, non-vertical).
- Field finishes and mulls.
- Glass imperfections and optical distortions that do not affect structural integrity, consistent with ASTM or other industry standards.
- Settling or shifting of the structure in which the product is installed.
- Lack of protection from the elements. An overhang should extend at least 3/4 of the distance from the bottom of a door to where the overhang begins and extend at least 3 feet past both sides of the opening.



LIMITATIONS, DISCLAIMERS AND FURTHER TERMS AND CONDITIONS

LIMITATIONS

IN NO EVENT WILL VISTAVIEW BY ALDORA'S LIABILITY EXCEED THE COST PAID FOR THE AFFECTED COMPONENT OR PRODUCT. IN NO EVENT WILL VISTAVIEW BY ALDORA BE LIABLE FOR CONSEQUENTIAL OR INCIDENTAL DAMAGES.

The limitations of warranty and liability set forth herein shall survive and apply, even if the exclusive remedy set forth in this Limited Warranty is found to have failed of its essential purpose.

DISCLAIMERS

Any product or component not specifically covered in this Limited Warranty or another written VistaView by Aldora product warranty is provided AS IS and without warranty. This Limited Warranty gives you specific legal rights and you may also have other rights, which may vary from state to state. THIS IS ONLY A WARRANTY TO REPAIR, REPLACE OR REFUND, NOT A STATEMENT OF THE USEFUL LIFE OF ANY VISTAVIEW BY ALDORA PRODUCT OR A WARRANTY OF FUTURE PERFORMANCE.

THERE ARE NO WARRANTIES OTHER THAN THOSE CONTAINED IN THIS LIMITED WARRANTY WHICH SHALL BE THE SOLE REMEDY AVAILABLE HEREUNDER. No employee, dealer or agent of VistaView by Aldora or third party may undertake or establish any other obligation, liability or responsibility on VistaView by Aldora's behalf.

ALL IMPLIED WARRANTIES, INCLUDING THE WARRANTIES OF MERCHANTABILITY AND FITNESS FOR A PARTICULAR PURPOSE ARE DISCLAIMED. Any implied warranty which cannot be disclaimed under applicable law will be limited in duration to the shortest permissible term and, in any event, will not exceed the term of the applicable express limited warranty; the requirements for presenting any claim so affected will be as provided in this Limited Warranty.



SUSTAINABILITY AND COMPLIANCE

VistaView by Aldora is not liable for any damage or problem relating to faulty or inappropriate building construction or design, selection or compatibility of products, installation or maintenance.

The architect, contractor, buyer, user, installer and/or other construction professional have the responsibility to determine compliance and suitability of all building components with applicable building codes or standards, including the design and installation of any flashing, sealing, drainage or water management system and the use of any VistaView by Aldora product.

CERTIFICATIONS AND RATINGS

Many standard VistaView by Aldora products are labeled with National Fenestration Rating Council (NFRC) ratings and/or Florida Affirmations based on specified testing methodologies for product samples at the time of manufacture. Ratings, certifications and affirmations are not performance warranties. Depending on the conditions of use, performance of individual products may vary and change over time. See www.NFRC.org and www.floridabuilding.org for additional information.

NO CLASS ACTION OR JURY TRIAL

YOU AGREE TO ASSERT ALL DISPUTES OR CLAIMS AGAINST VISTAVIEW BY ALDORA AND VISTAVIEW BY ALDORA'S EMPLOYEES, DEALERS OR AFFILIATES SOLELY ON AN INDIVIDUAL BASIS AND NOT AS A REPRESENTATIVE OR MEMBER OF ANY CLASS OR IN ANY OTHER REPRESENTATIVE ACTION OR PROCEEDING, EXCEPT TO THE EXTENT SUCH WAIVER IS PROHIBITED BY LAW. YOU AND VISTAVIEW BY ALDORA ALSO AGREE TO WAIVE ANY RIGHT TO A JURY TRIAL AND AGREE TO HAVE ALL DISPUTES HEARD AND DECIDED SOLELY BY THE FEDERAL OR STATE COURT JUDGE.

REGISTRATION

You must register your products within ninety (90) days after the delivery date to obtain the Limited Warranty. If the warranty is not registered within the registration period, coverage by default is one (1) year as of the initial delivery date.

WARRANTY CLAIMS

You must submit warranty claims in writing within the applicable notice period and within sixty (60) days of the appearance of the defect. Submit claims to VistaView by Aldora's customer service department at contact@aldoraglass.com or to the dealer where the VistaView by Aldora products were purchased.

